
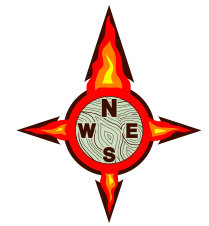



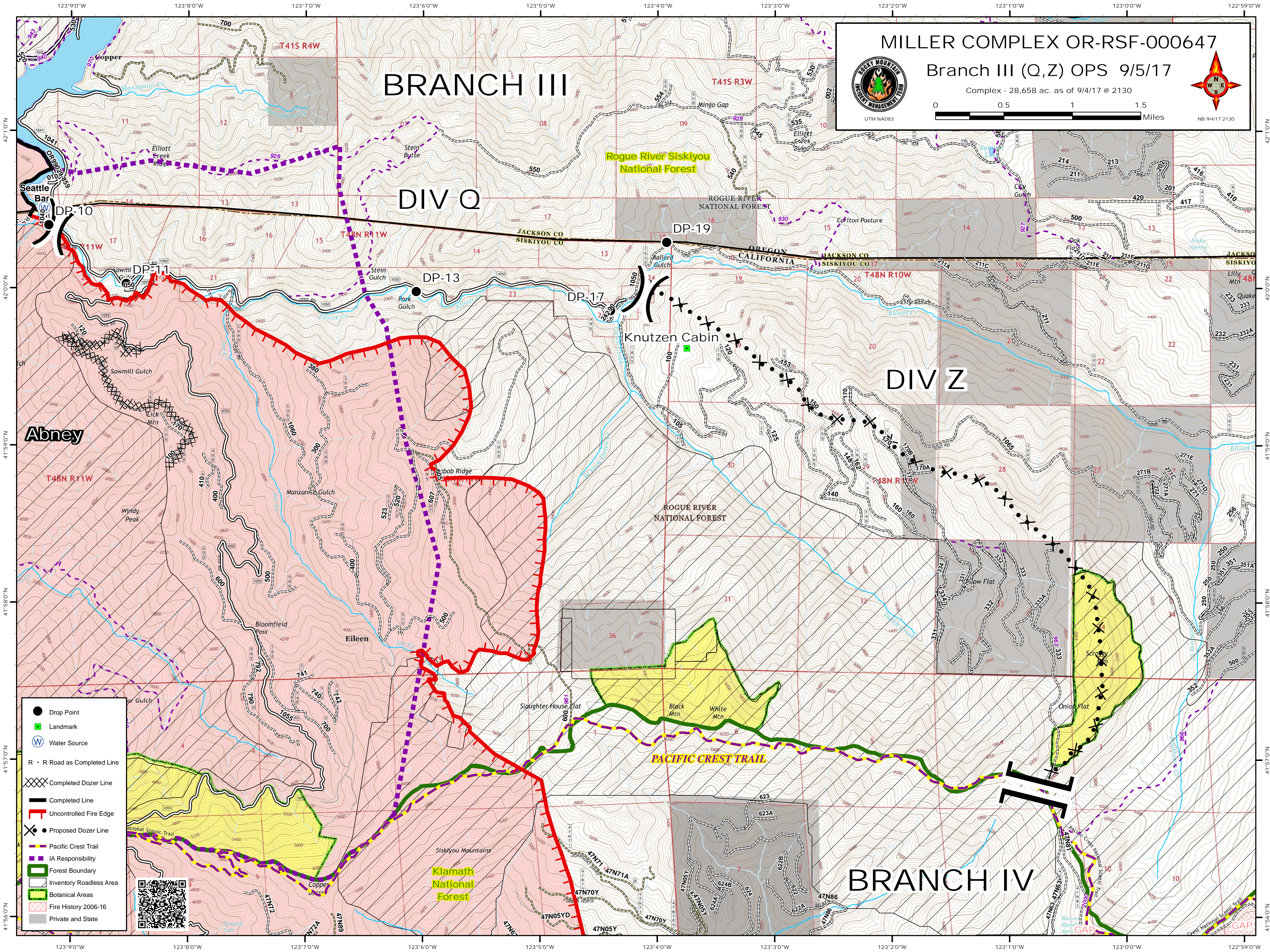
MILLER COMPLEX OR-RSF-000647

Branch III (Q,Z) OPS 9/5/17

Complex - 28,658 ac. as of 9/4/17 @ 2130

UTM NAD83



BRANCH III

DIV Q

DIV Z

BRANCH IV

- Drop Point
- Landmark
- ⊕ Water Source
- R - R Road as Completed Line
- ⊗ Completed Dozer Line
- Completed Line
- ┌ Uncontrolled Fire Edge
- ⊗ Proposed Dozer Line
- Pacific Crest Trail
- IA Responsibility
- ▭ Forest Boundary
- ▭ Inventory Roadless Area
- ▭ Botanical Areas
- ▭ Fire History 2006-16
- ▭ Private and State



Rogue River Siskiyou National Forest

ROGUE RIVER NATIONAL FOREST

PACIFIC CREST TRAIL

Klamath National Forest

Abney

Knutzen Cabin

Scraggy

Onion Flat

Slaughter House Flat

Black Mtn White Mtn

Eileen

Bloomfield Pass

Windy Peak

Sawmill Gulch

Manzanita Gulch

Stein Gulch

Park Gulch

Manzanita Cr.

Manzanita Cr.

Manzanita Cr.

Manzanita Cr.

Manzanita Cr.

Manzanita Cr.

Manzanita Cr.

Manzanita Cr.

Manzanita Cr.

Manzanita Cr.

Manzanita Cr.

Manzanita Cr.

Manzanita Cr.

Manzanita Cr.

Manzanita Cr.

Manzanita Cr.

Manzanita Cr.