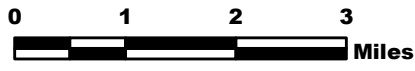


# MILLER COMPLEX OR-RSF-000647



## Public Information Map 9/5

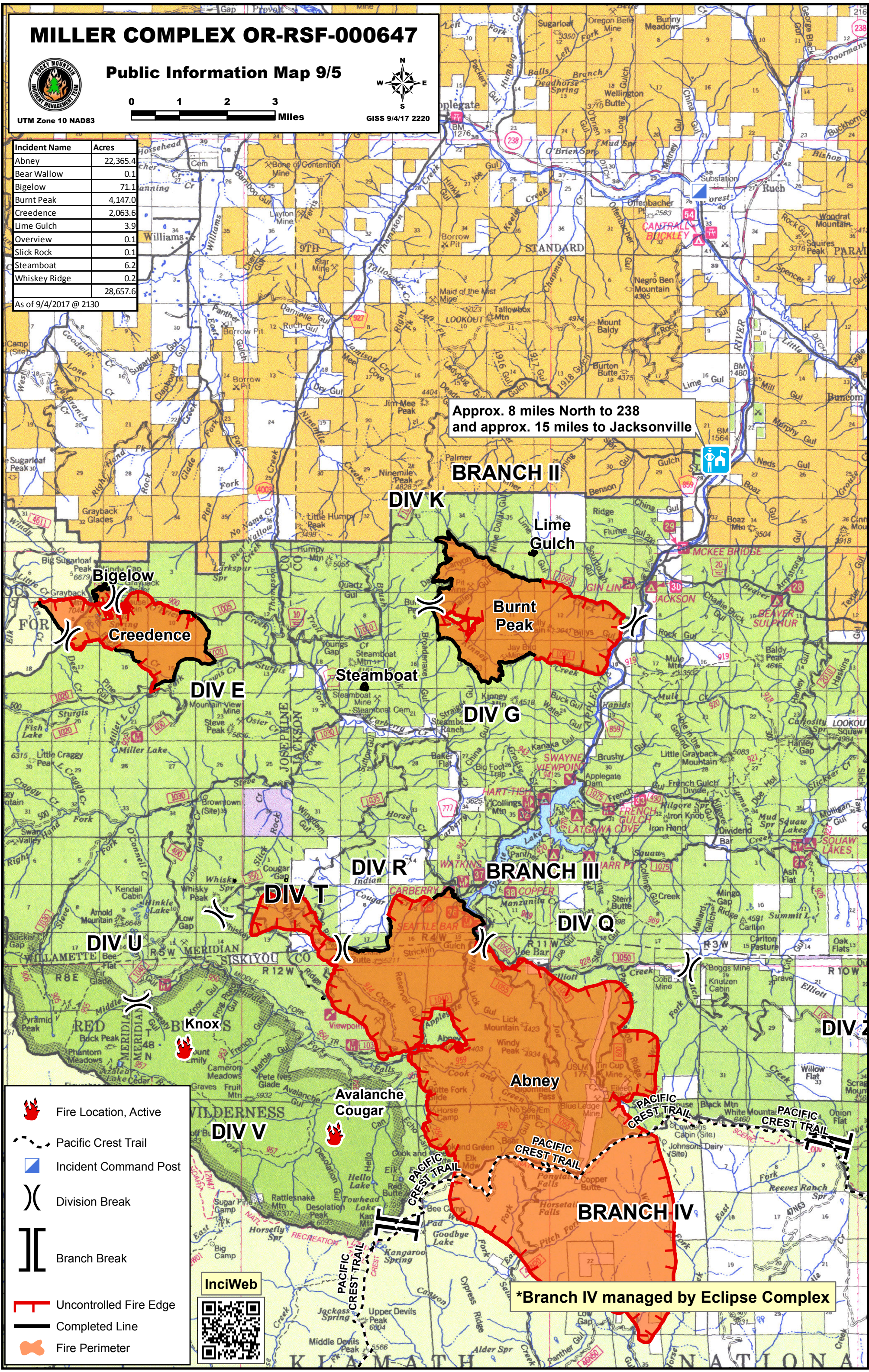


UTM Zone 10 NAD83

Incident Name	Acres
Abney	22,365.4
Bear Wallow	0.1
Bigelow	71.1
Burnt Peak	4,147.0
Creedence	2,063.6
Lime Gulch	3.9
Overview	0.1
Slick Rock	0.1
Steamboat	6.2
Whiskey Ridge	0.2
<b>Total</b>	<b>28,657.6</b>

As of 9/4/2017 @ 2130

Approx. 8 miles North to 238 and approx. 15 miles to Jacksonville



- Fire Location, Active
- Pacific Crest Trail
- Incident Command Post
- Division Break
- Branch Break
- Uncontrolled Fire Edge
- Completed Line
- Fire Perimeter

**InciWeb**

\*Branch IV managed by Eclipse Complex