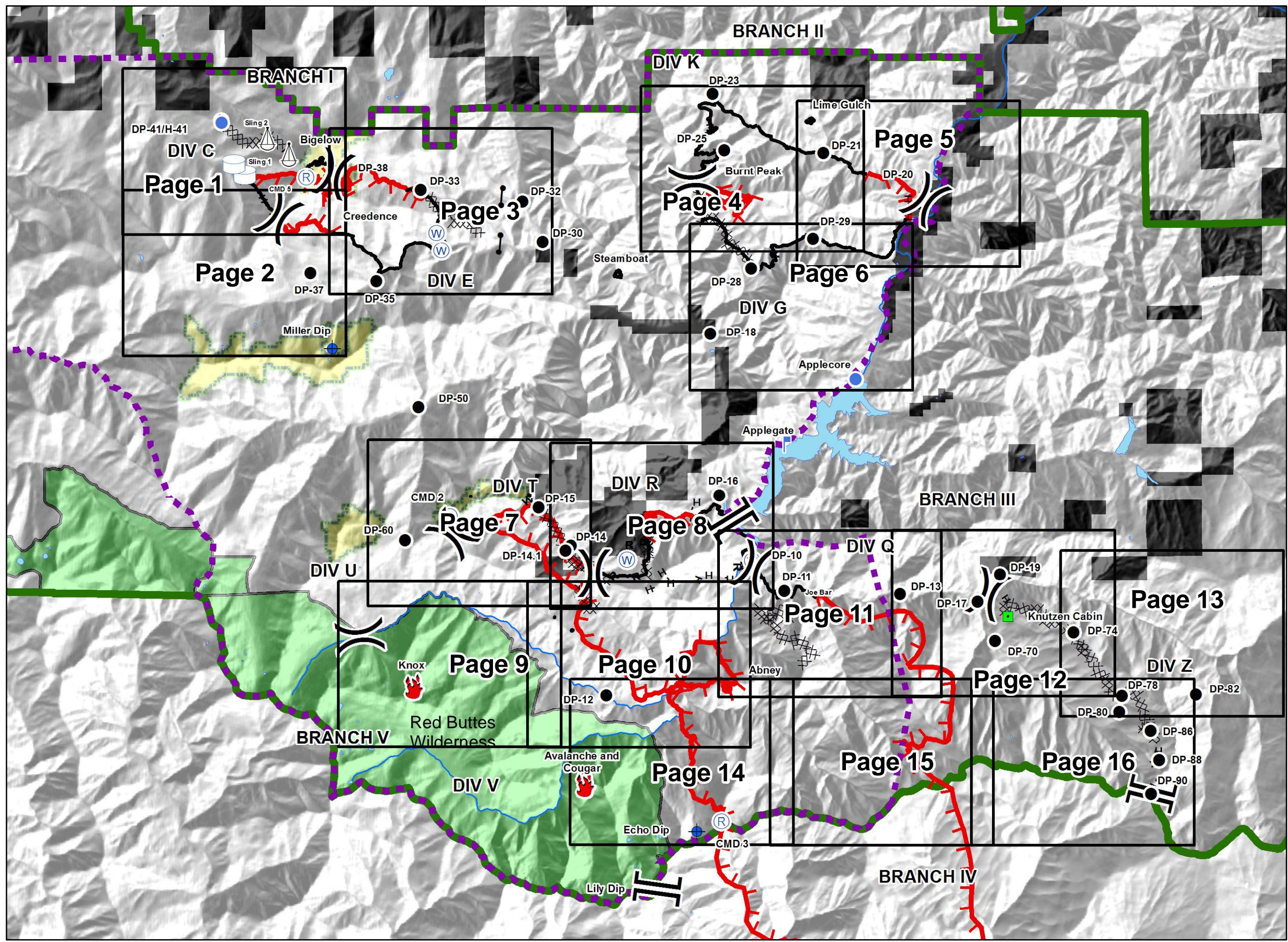
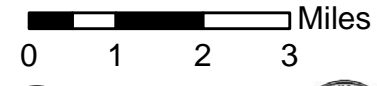


# Miller Complex OR-RSF-000647

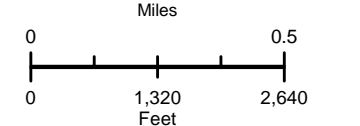
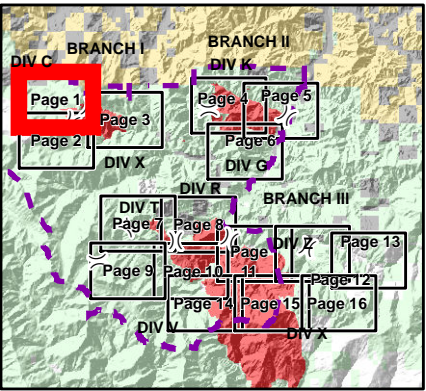
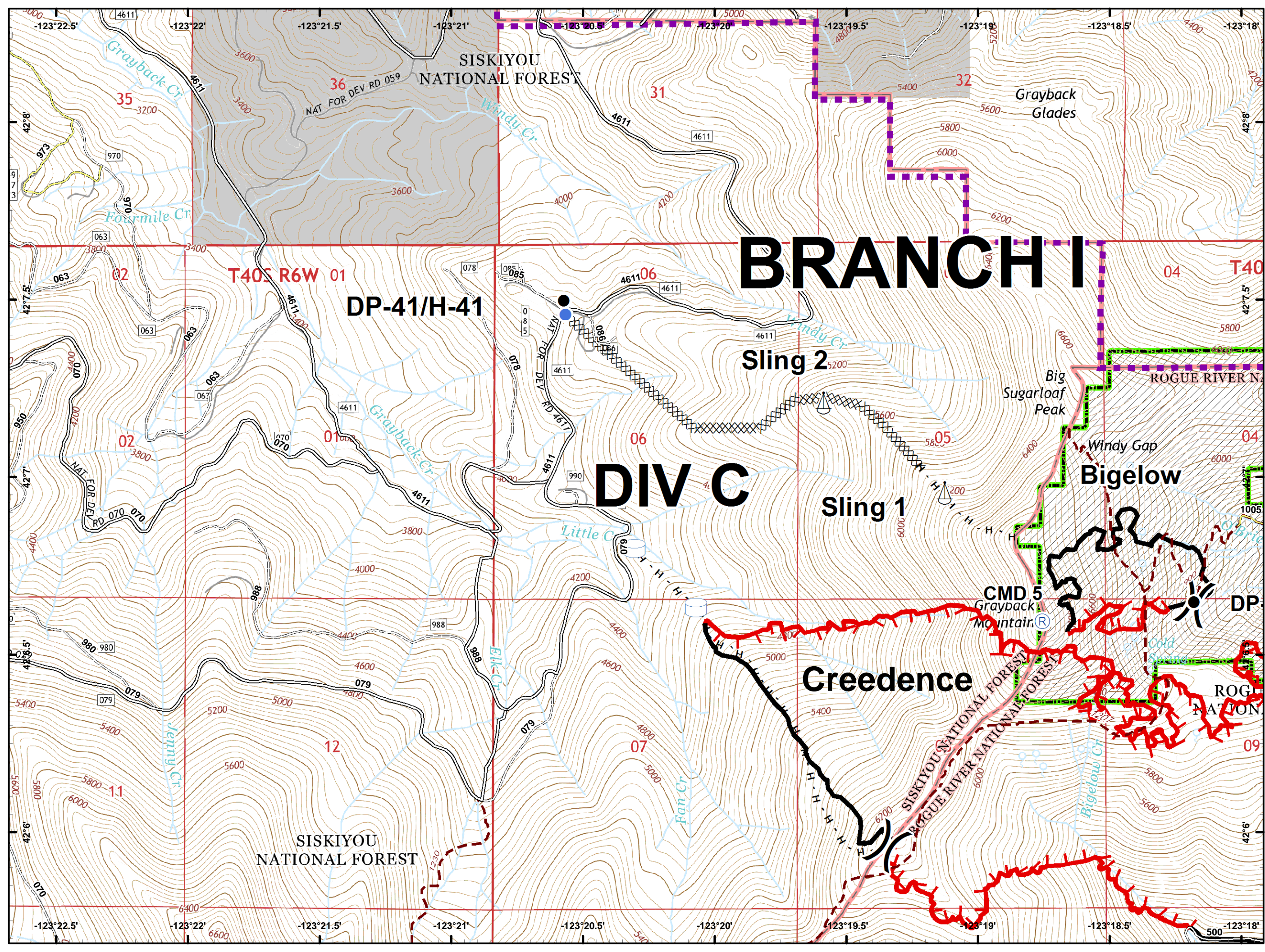
9/6/2017






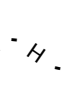



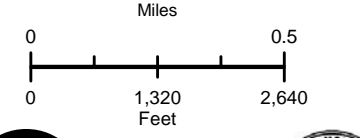
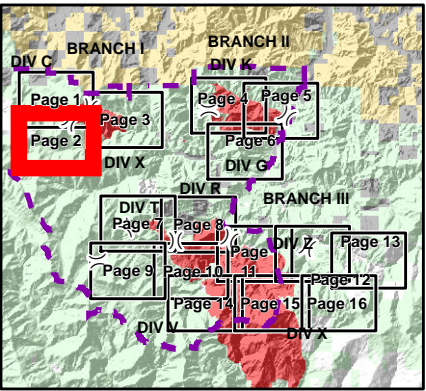
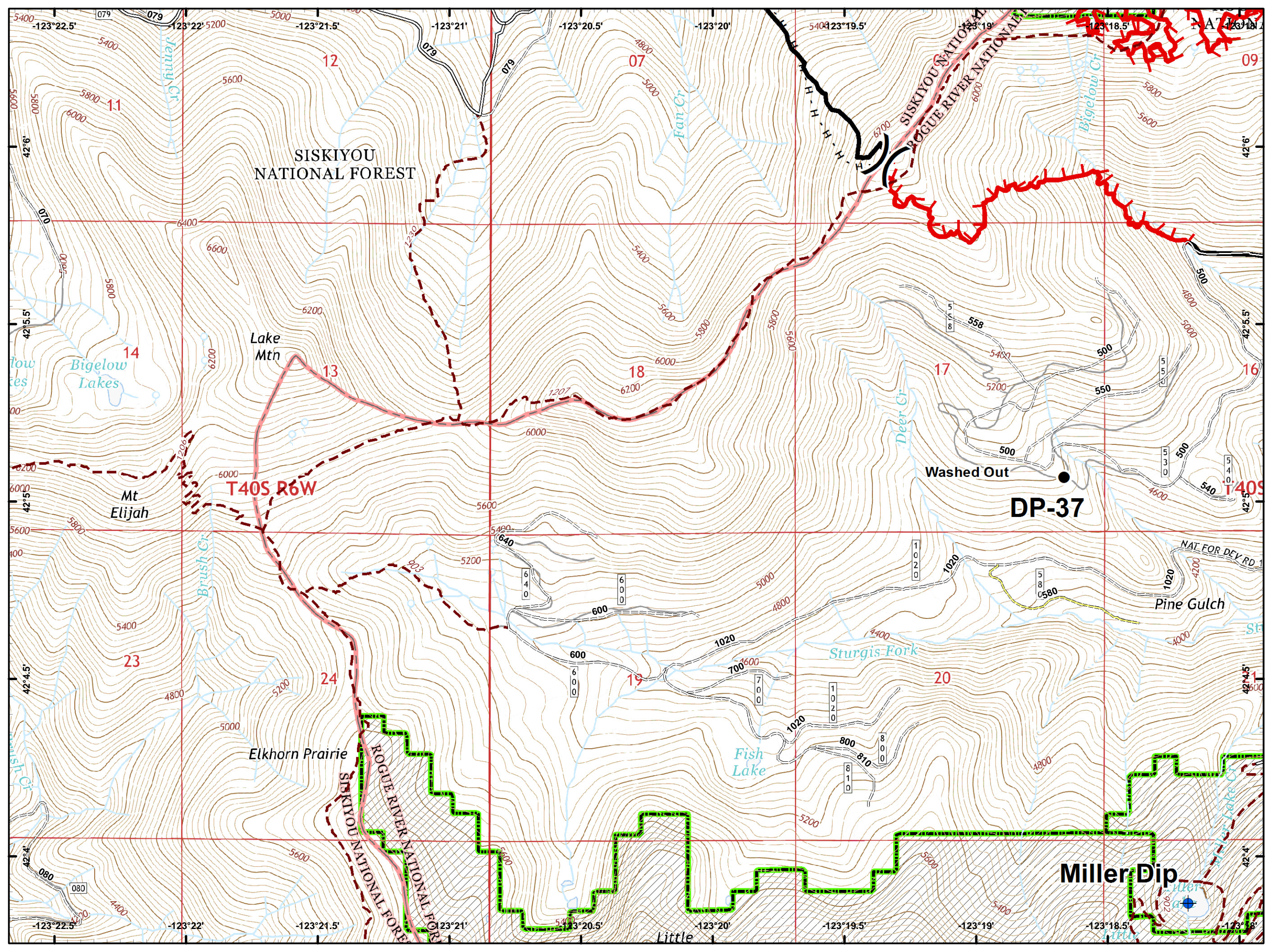
- Dip Site
- Drop Point
- Fire Location
- Gate
- Helispot
- Landmark
- Lookout
- Repeater
- Sling Site
- Water Source
- Water Tank
- Division Break
- Branch Break
- IA Responsibility
- Uncontrolled Fire Edge
- Completed Line
- Completed Dozer Line
- Completed Hand Line
- Road as Completed Line
- Administrative Forest Boundary
- NHD Water Boundaries
- Rivers
- Botanical Areas (RNA)
- Wilderness
- Private



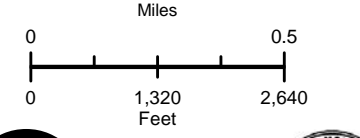
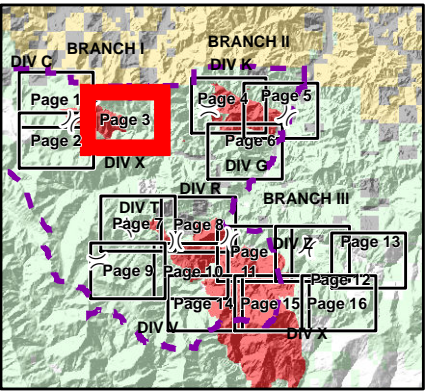
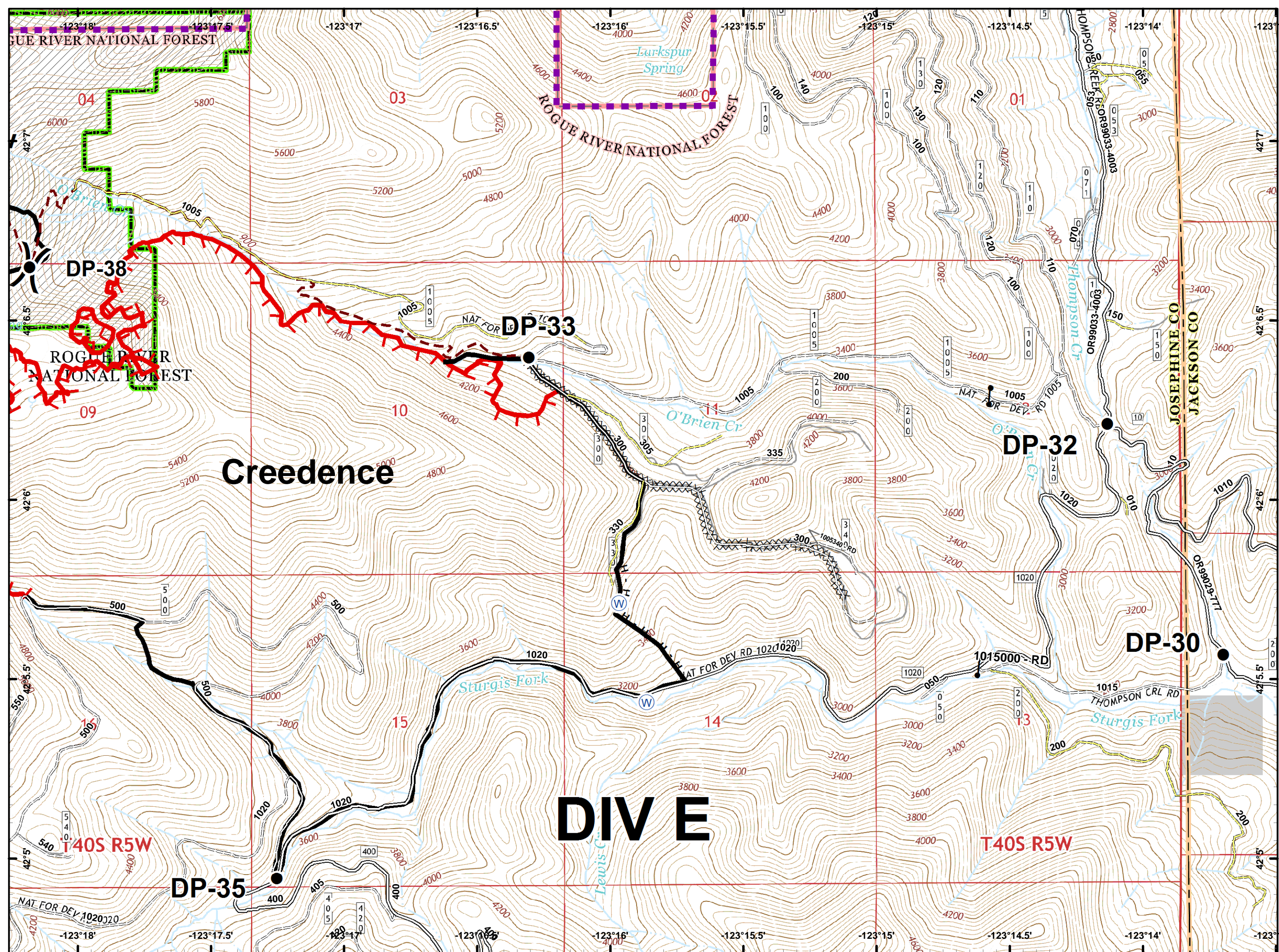
- Drop Point
- Helispot
- Ⓡ Repeater
- ⚓ Sling Site
- ⊕ Water Tank
- ) ( Division Break
- 🔴 Uncontrolled Fire Edge
- ⤵ Completed Line
- ⓧ Completed Dozer Line
- ⋯ Completed Hand Line
- 🔴 IA Responsibility
- ⊕ Private and State
- 🌿 Botanical Areas (RNA)



-  Dip Site
-  Drop Point
-  Division Break
-  Uncontrolled Fire Edge
-  Completed Line
-  Completed Hand Line
-  Botanical Areas (RNA)

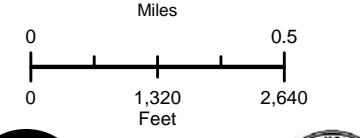
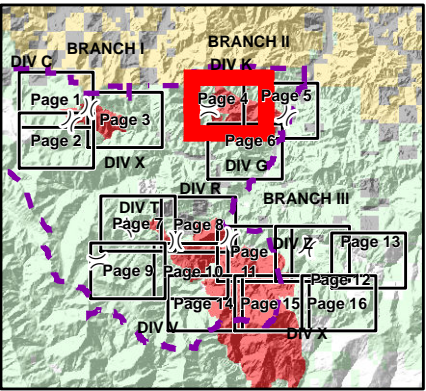
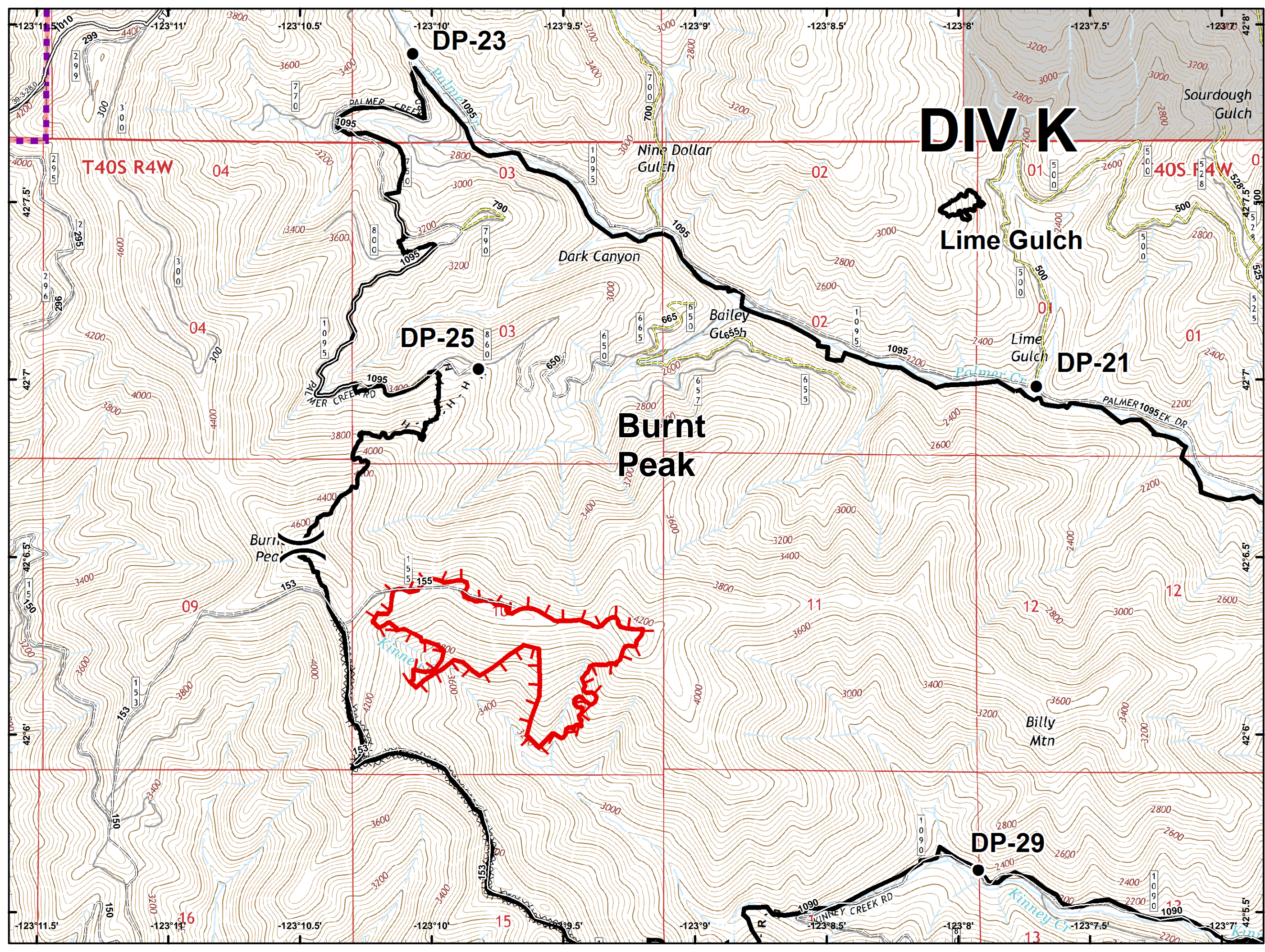


- Drop Point
- Gate
- ⊕ Water Source
- ) ( Division Break
- 🔴 Uncontrolled Fire Edge
- ⤵ Completed Line
- ⊘ Completed Dozer Line
- Completed Hand Line
- 🟡 IA Responsibility
- ⊕ Private and State
- 🌿 Botanical Areas (RNA)



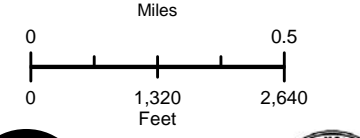
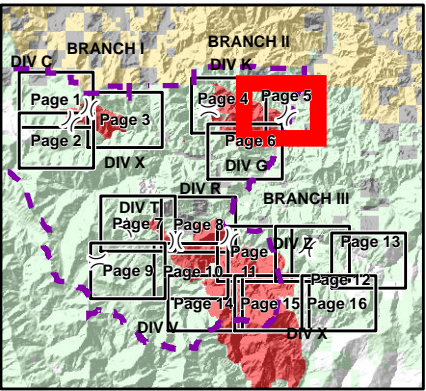
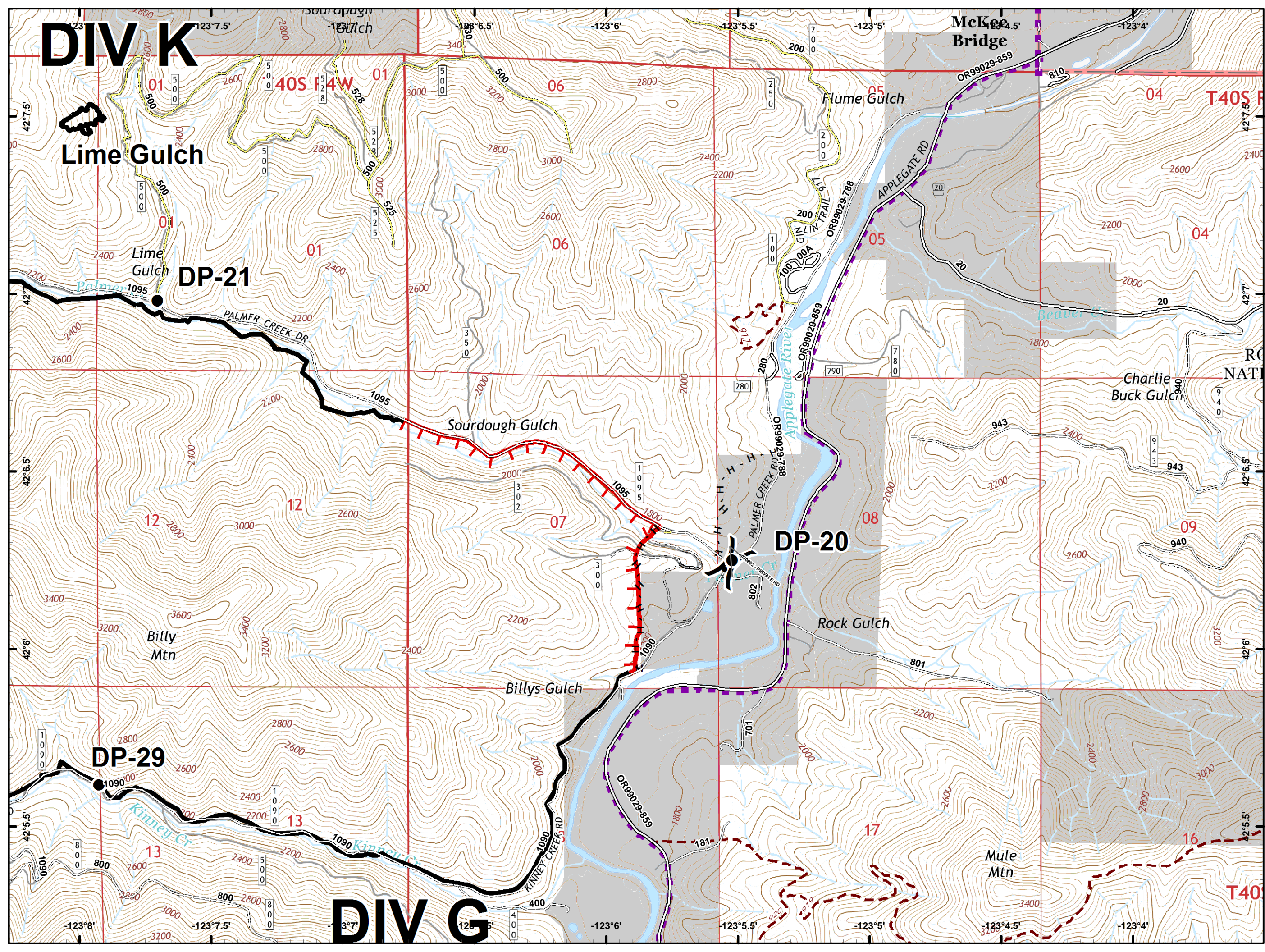
# DIV K

- Drop Point
- ) ( Division Break
- Uncontrolled Fire Edge
- Completed Line
- Completed Dozer Line
- Completed Hand Line
- R-R-R Road as Completed Line
- IA Responsibility
- Private and State



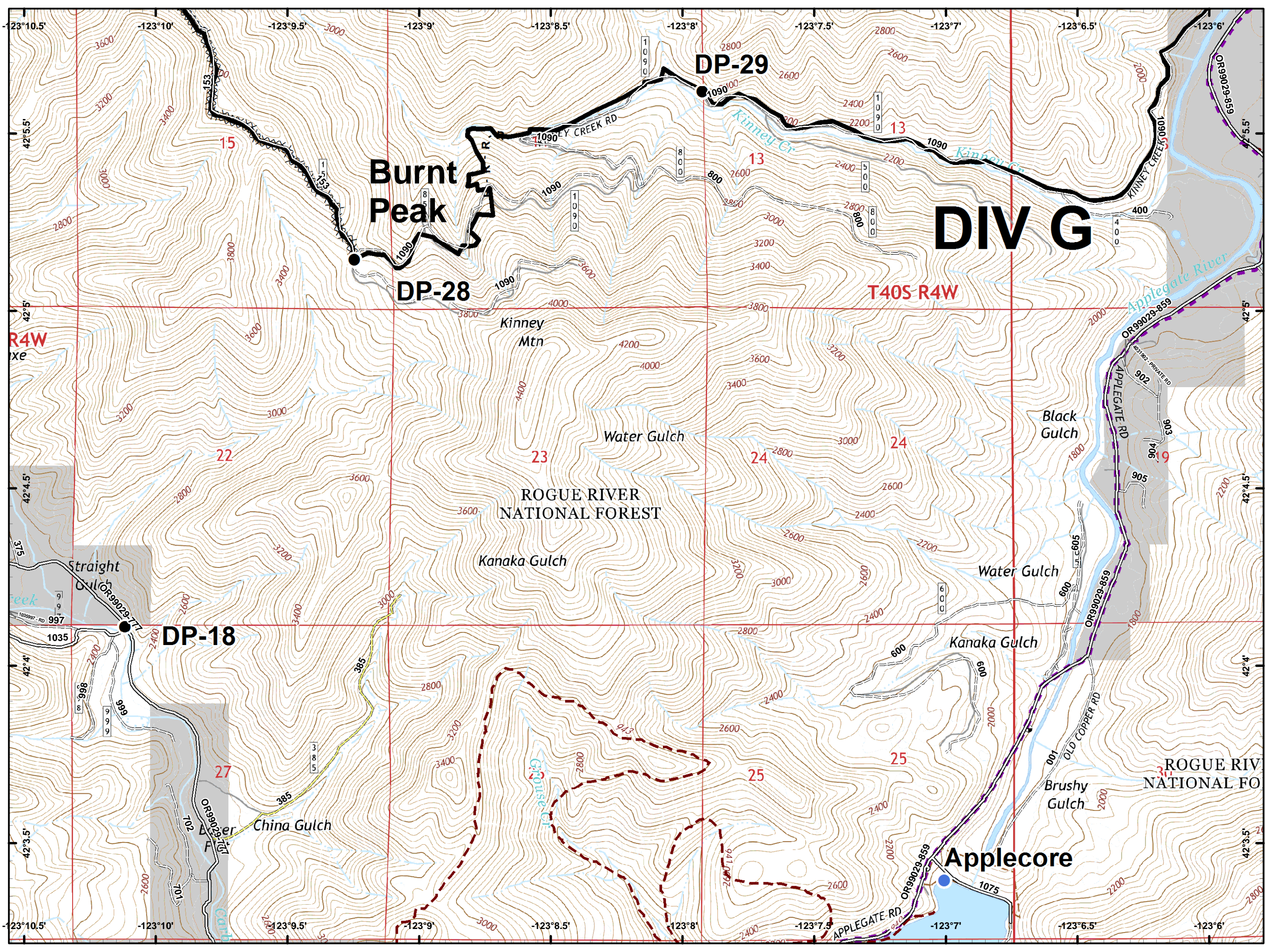
# DIV K

- Drop Point
- Gate
- ) ( Division Break
- Uncontrolled Fire Edge
- Completed Line
- Completed Hand Line
- IA Responsibility
- Miller\_Compl...
- Private and State



# DIV G

- Drop Point
- Helispot
- ~ Completed Line
- ⊠ Completed Dozer Line
- R - R - R Road as Completed Line
- IA Responsibility
- Private and State



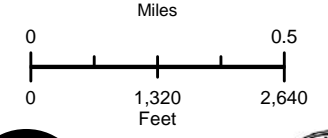
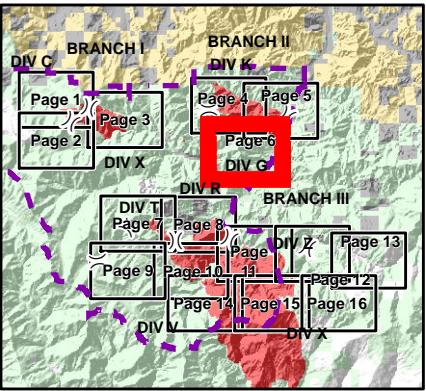
# DIV G

T40S R4W

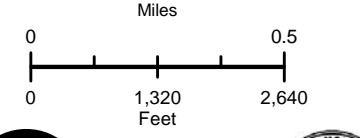
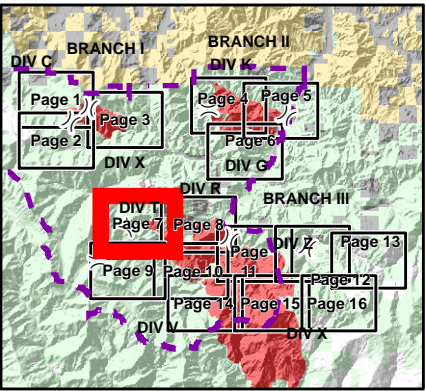
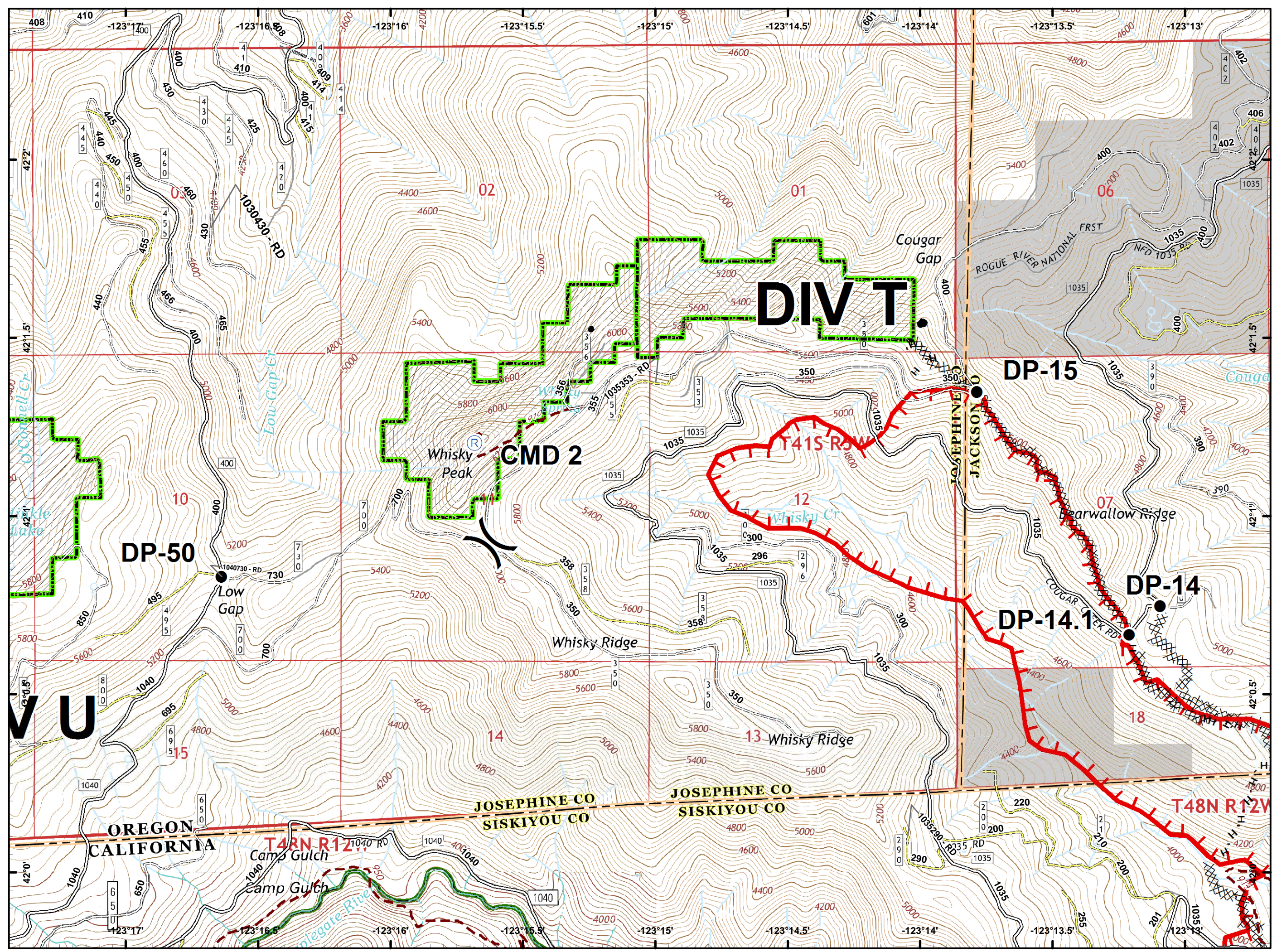
ROGUE RIVER NATIONAL FOREST

ROGUE RIVER NATIONAL FOREST

## Applecore

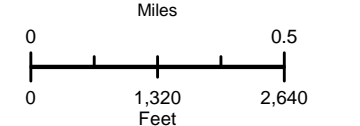
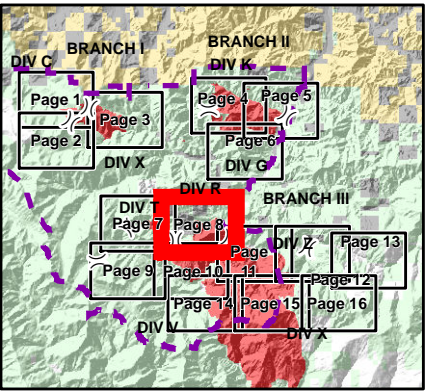
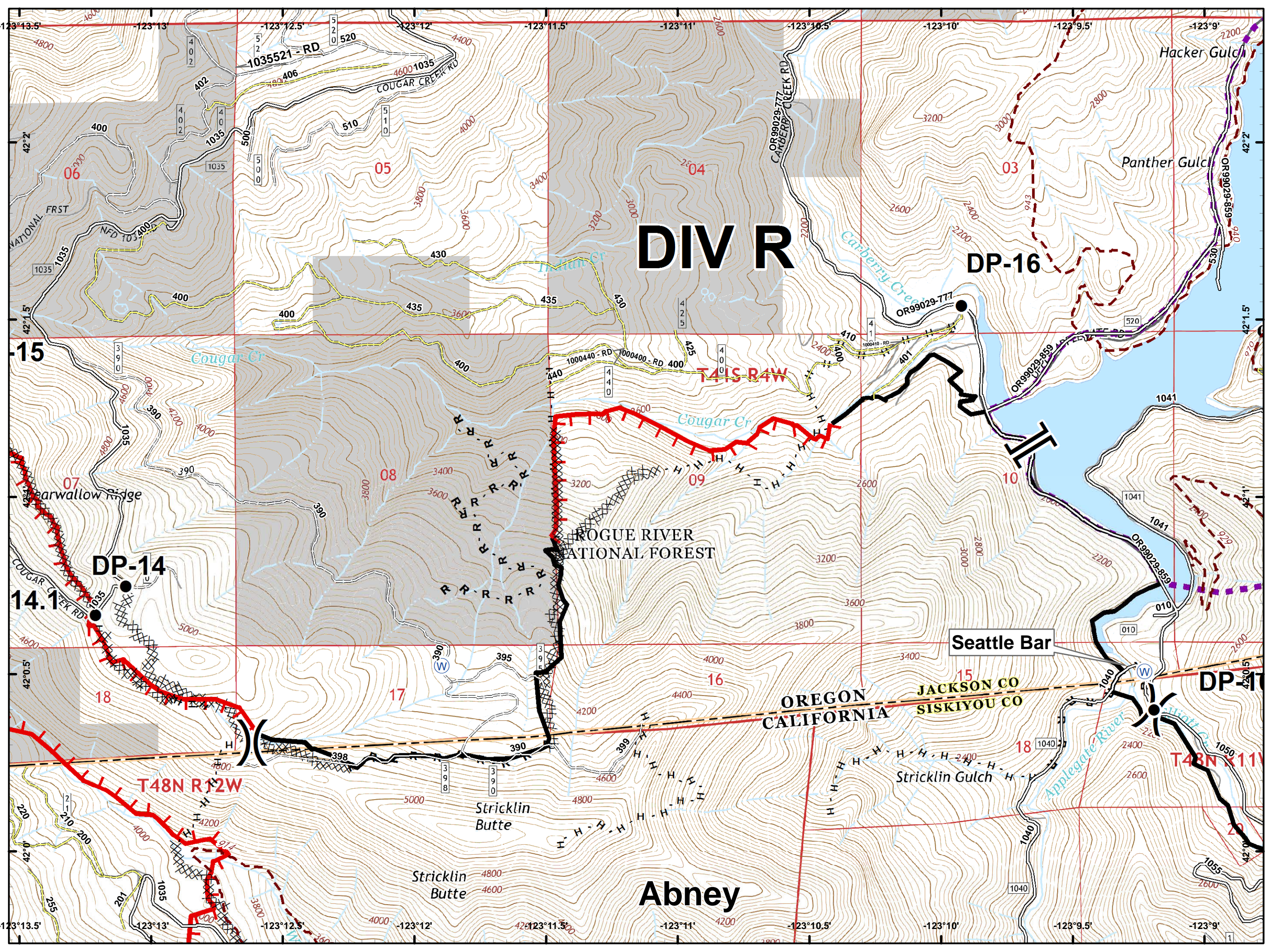




- Drop Point
- Ⓡ Repeater
- ) ( Division Break
- 🔴 Uncontrolled Fire Edge
- ⤿ Completed Line
- ⓧ Completed Dozer Line
- H · H · H Completed Hand Line
- 🌿 Wilderness
- Ⓜ Private and State
- 🌿 Botanical Areas (RNA)

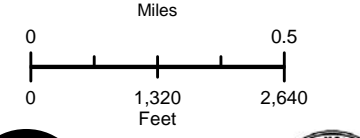
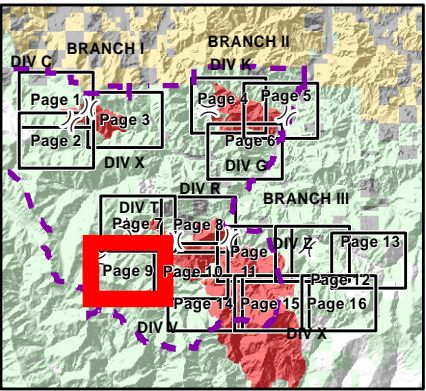
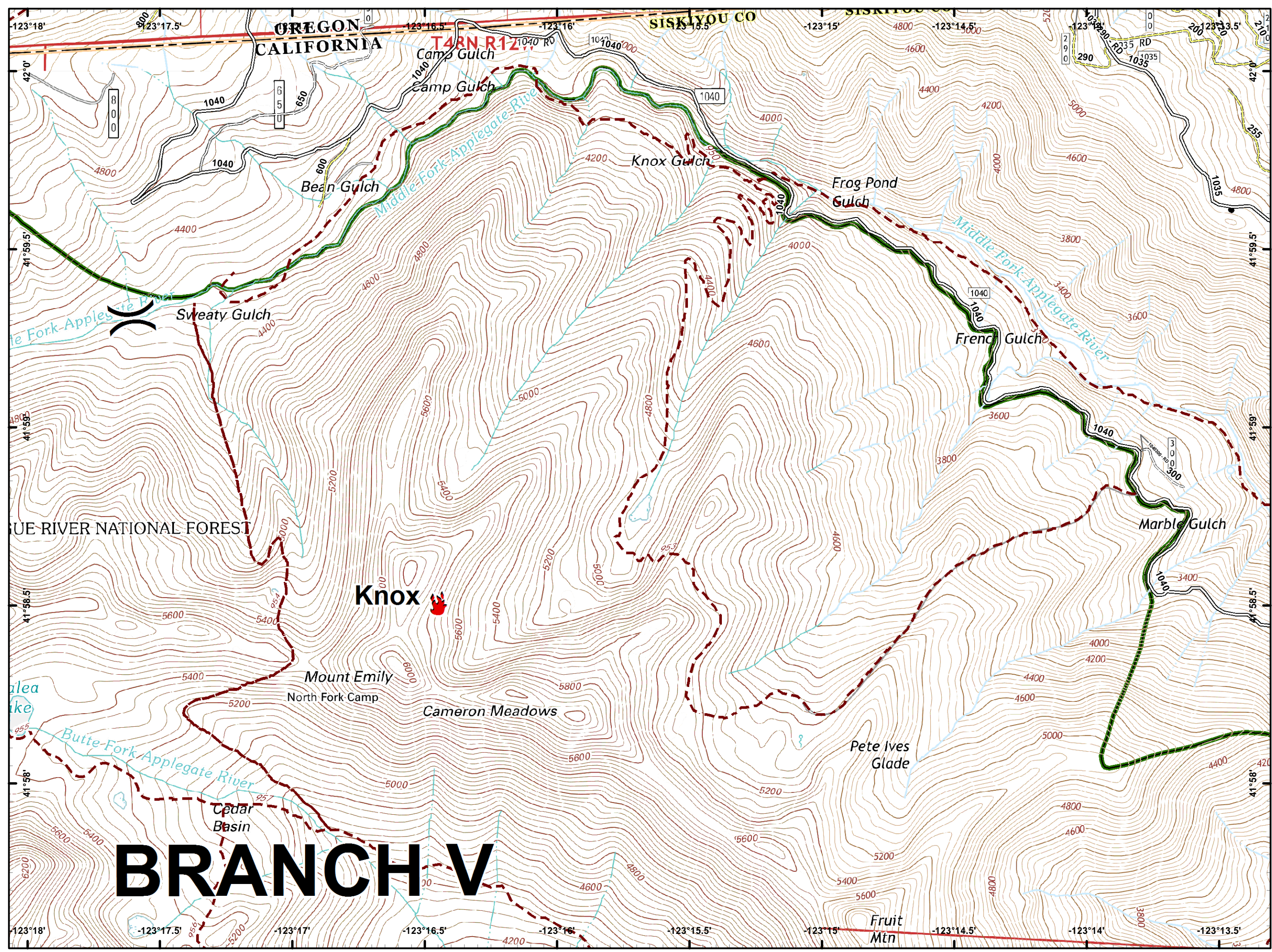




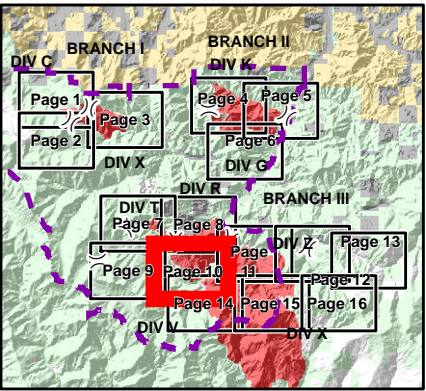
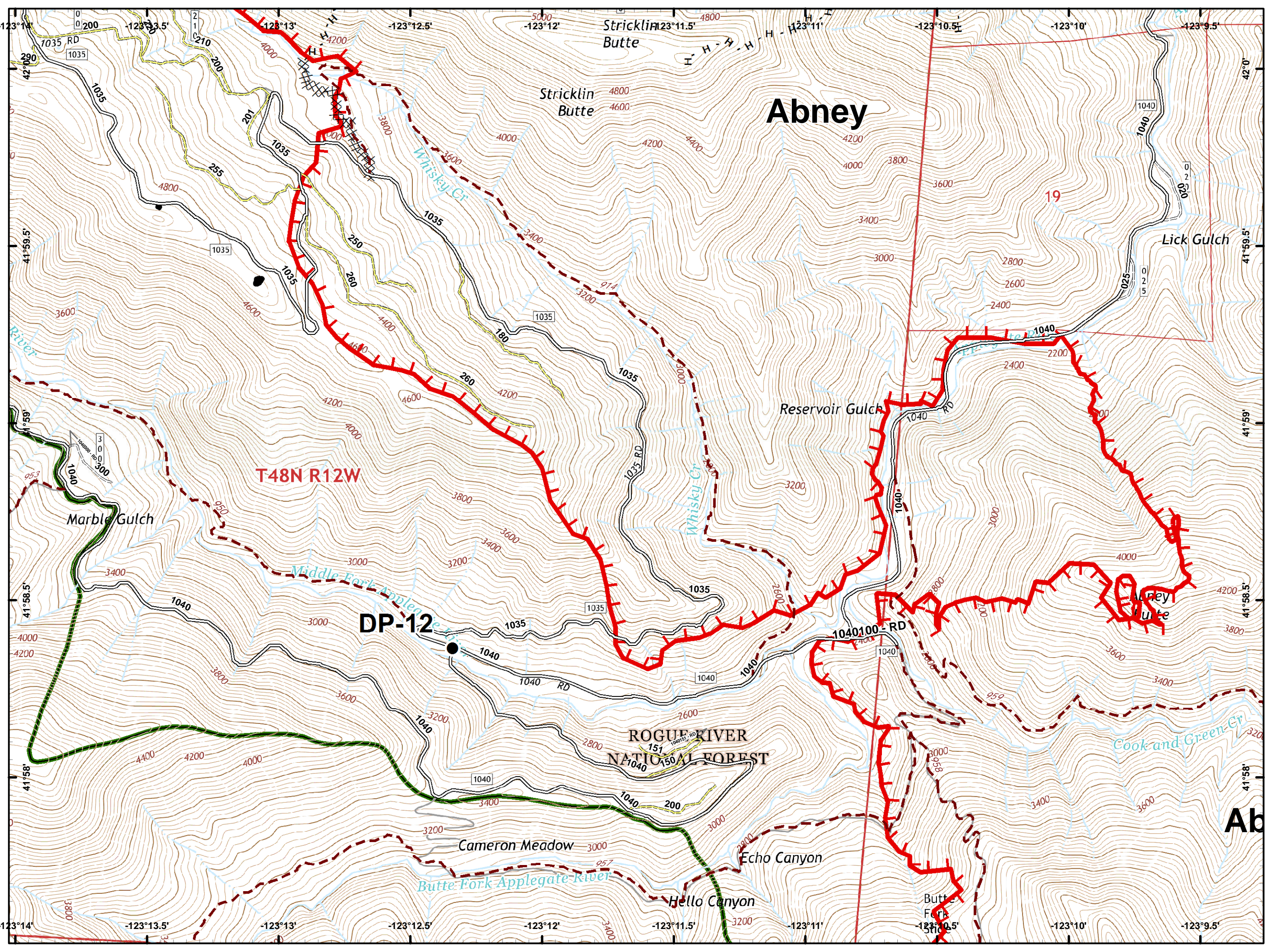
- Drop Point
- Ⓜ Water Source
- ) ( Division Break
- ] [ Branch Break
- 🔴 Uncontrolled Fire Edge
- ⚫ Completed Line
- ⚫ Completed Dozer Line
- ⚫ Completed Hand Line
- ⚫ Road as Completed Line
- 🟡 IA Responsibility
- ⚫ Private and State



-  Fire Location
-  Division Break
-  Completed Line
-  Wilderness



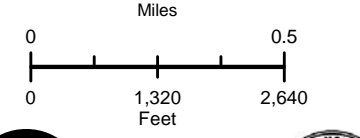
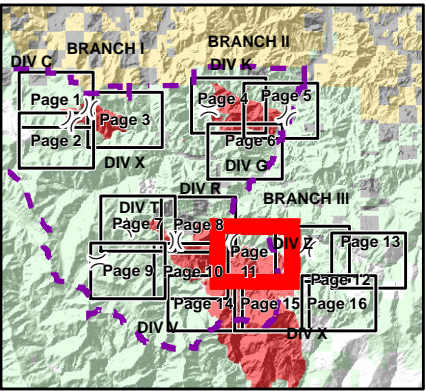
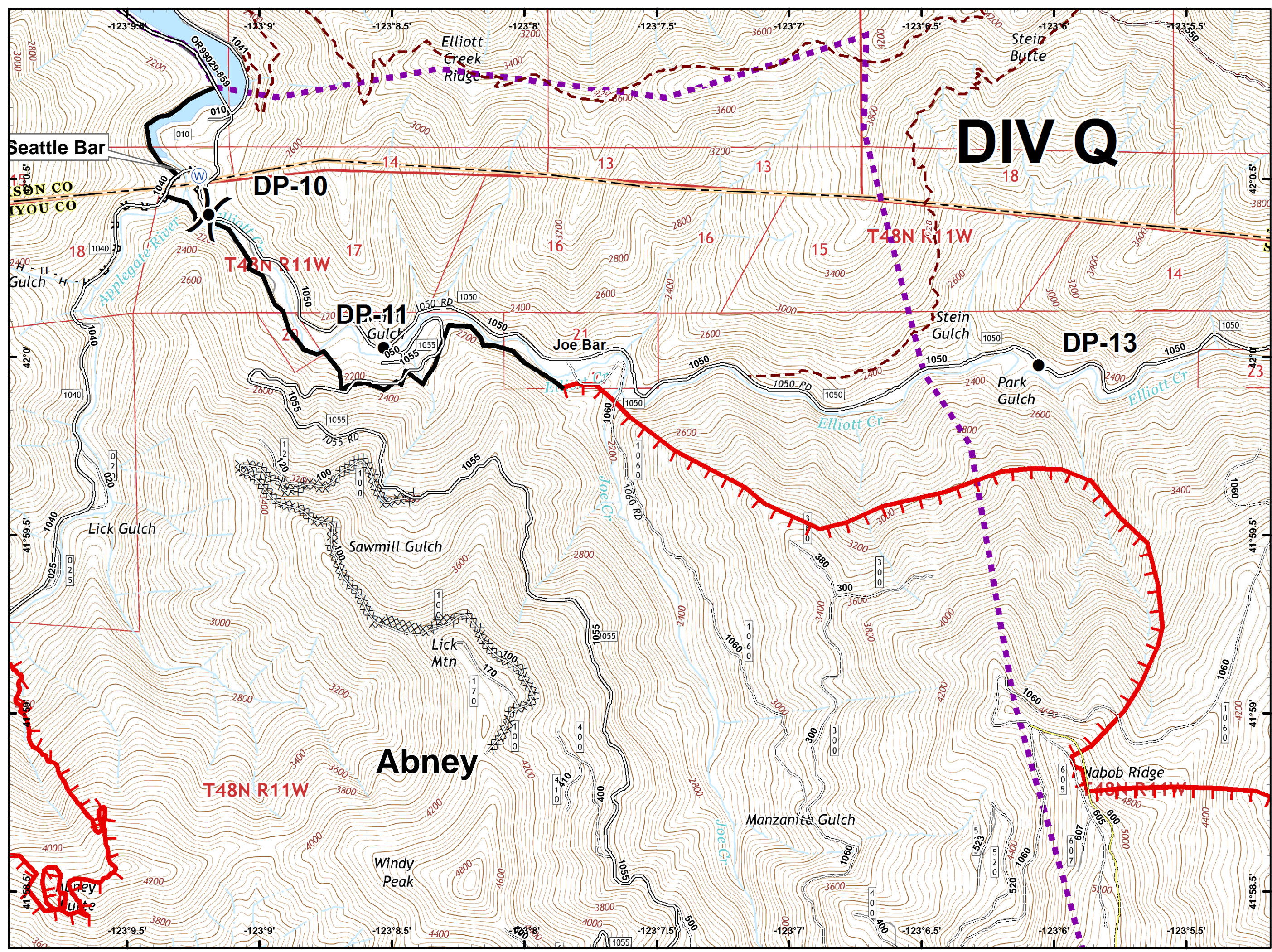
- Drop Point
- Uncontrolled Fire Edge
- Completed Line
- Completed Dozer Line
- Completed Hand Line
- Wilderness



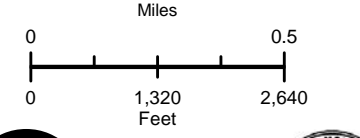
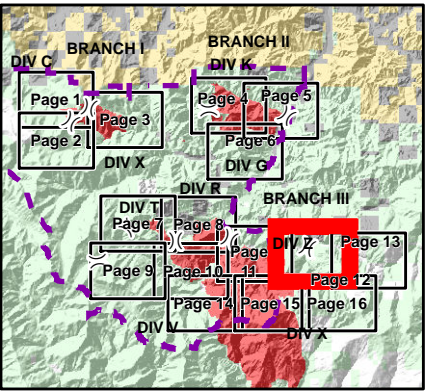
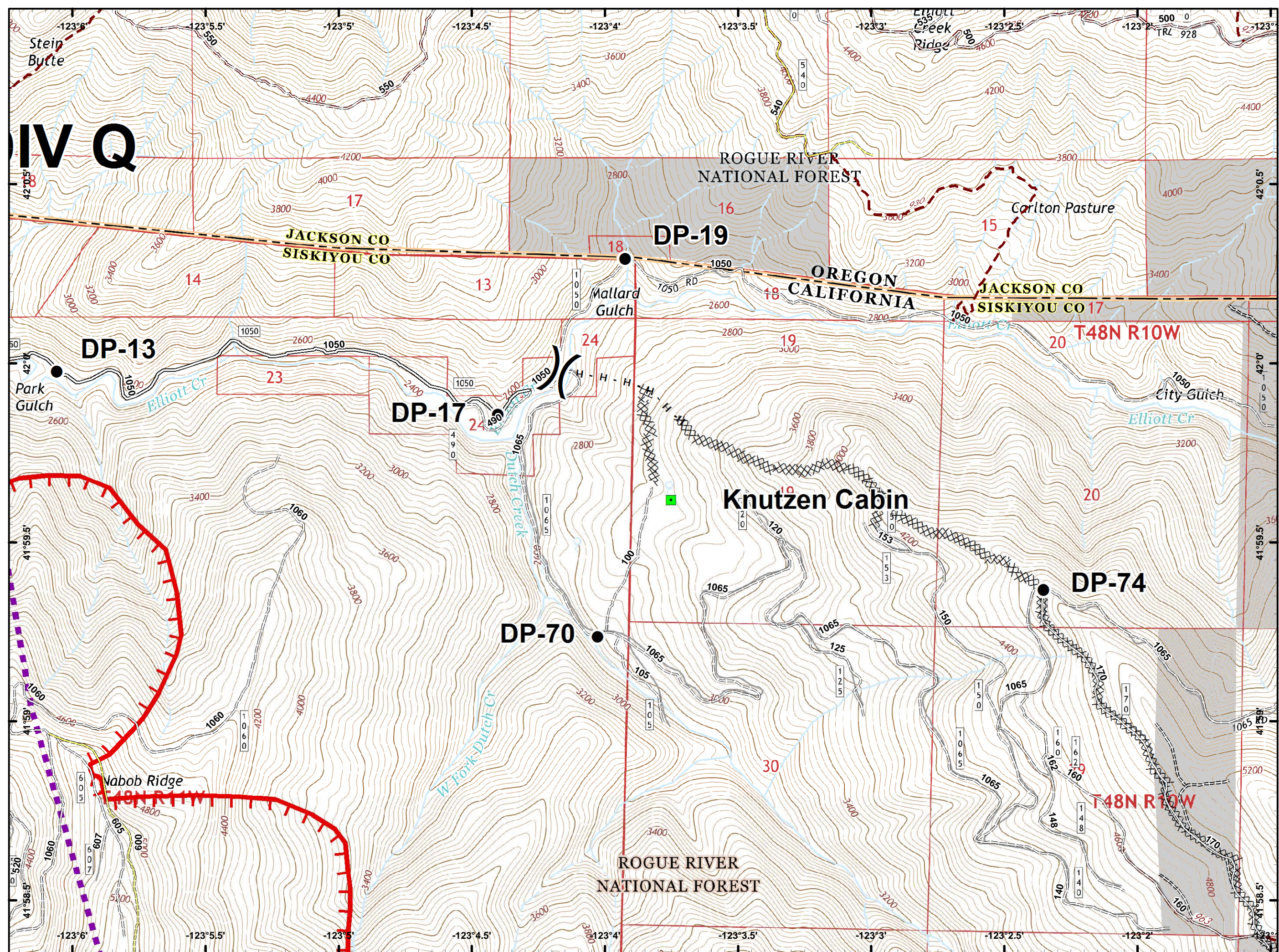
Miles 0 0.5  
0 1,320 2,640  
Feet

A north arrow and the logo for the Oregon Department of Forestry are located in the bottom right corner.

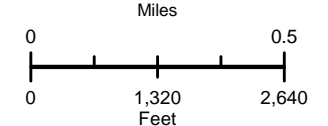
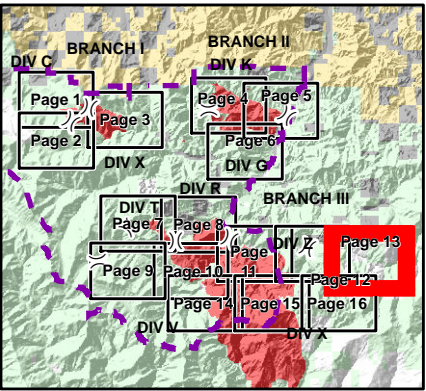
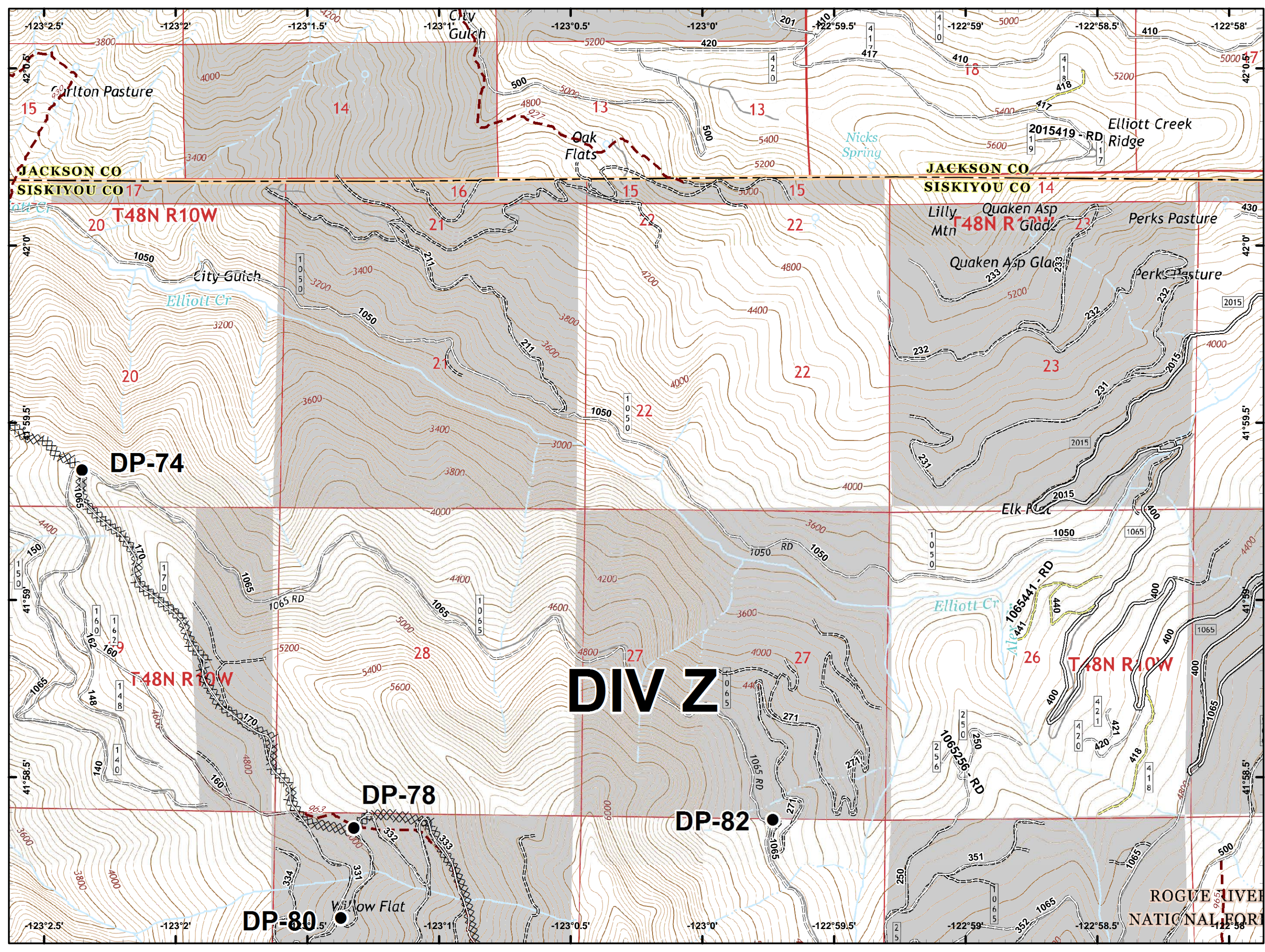
- Drop Point
- Ⓜ Water Source
- ) ( Division Break
- 🔴 Uncontrolled Fire Edge
- ⚡ Completed Line
- ⚡ Completed Dozer Line
- ⚡ Completed Hand Line
- ⚡ Road as Completed Line
- 🔴 IA Responsibility



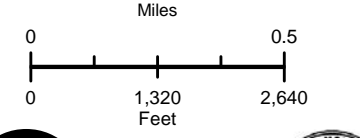
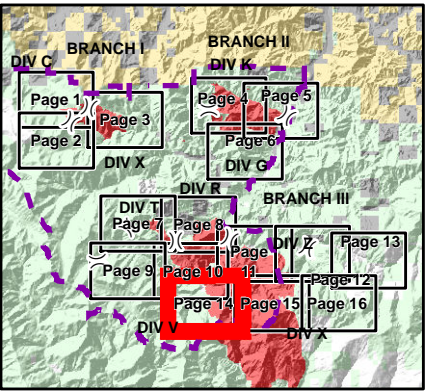
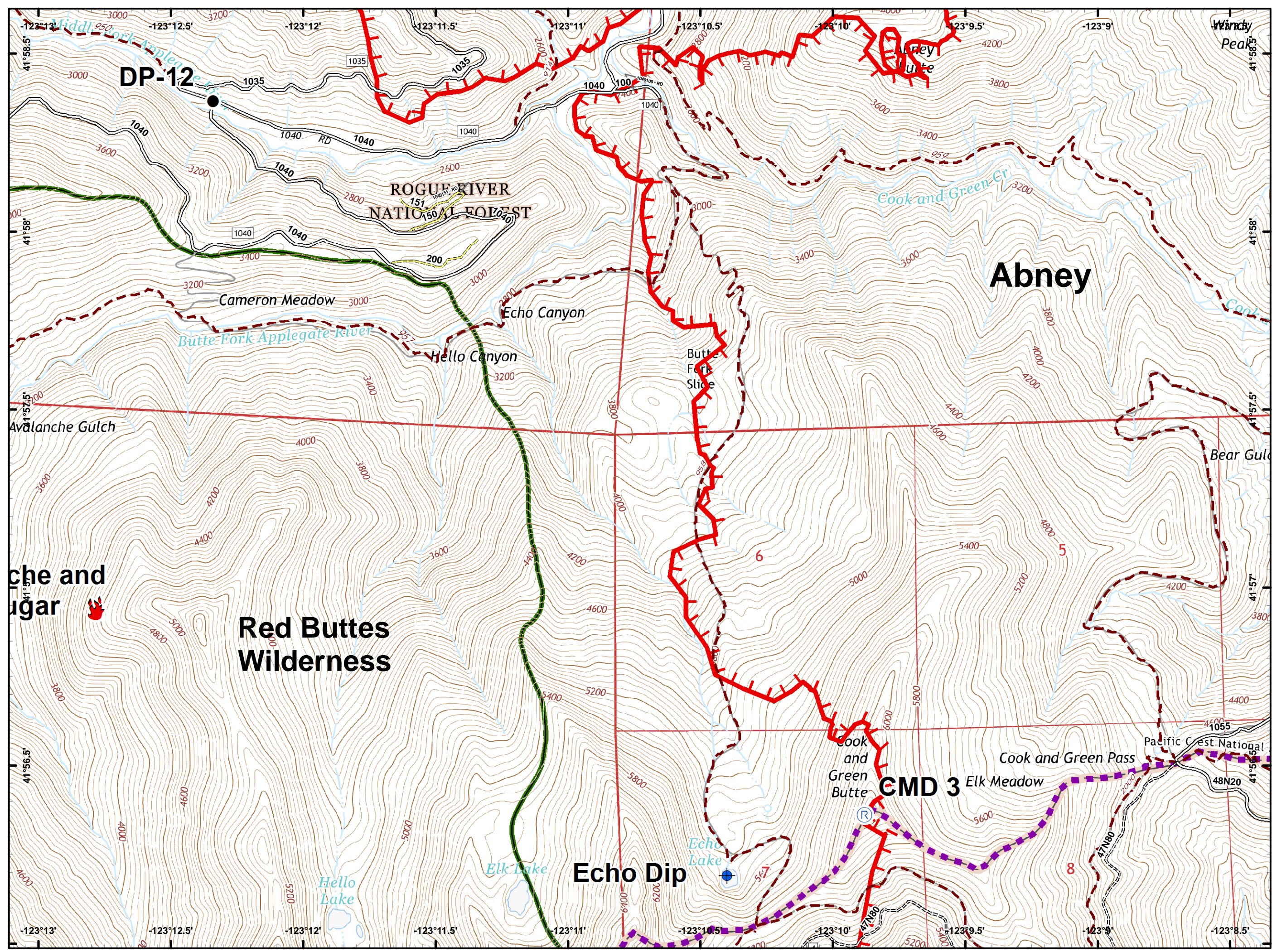
- Drop Point
- Landmark
- ) ( Division Break
- 🔴 Uncontrolled Fire Edge
- ⊗ Completed Dozer Line
- - - Completed Hand Line
- 👉 IA Responsibility
- Private and State



- Drop Point
- ▤ Completed Dozer Line
- Private and State

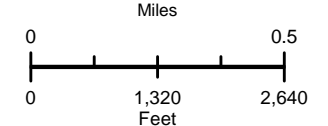
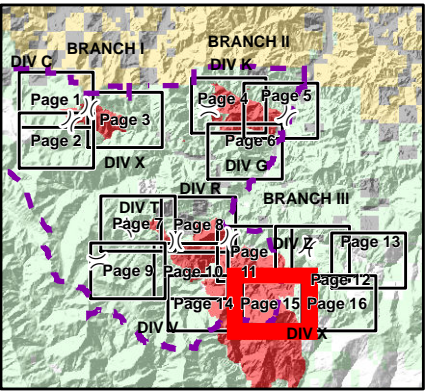
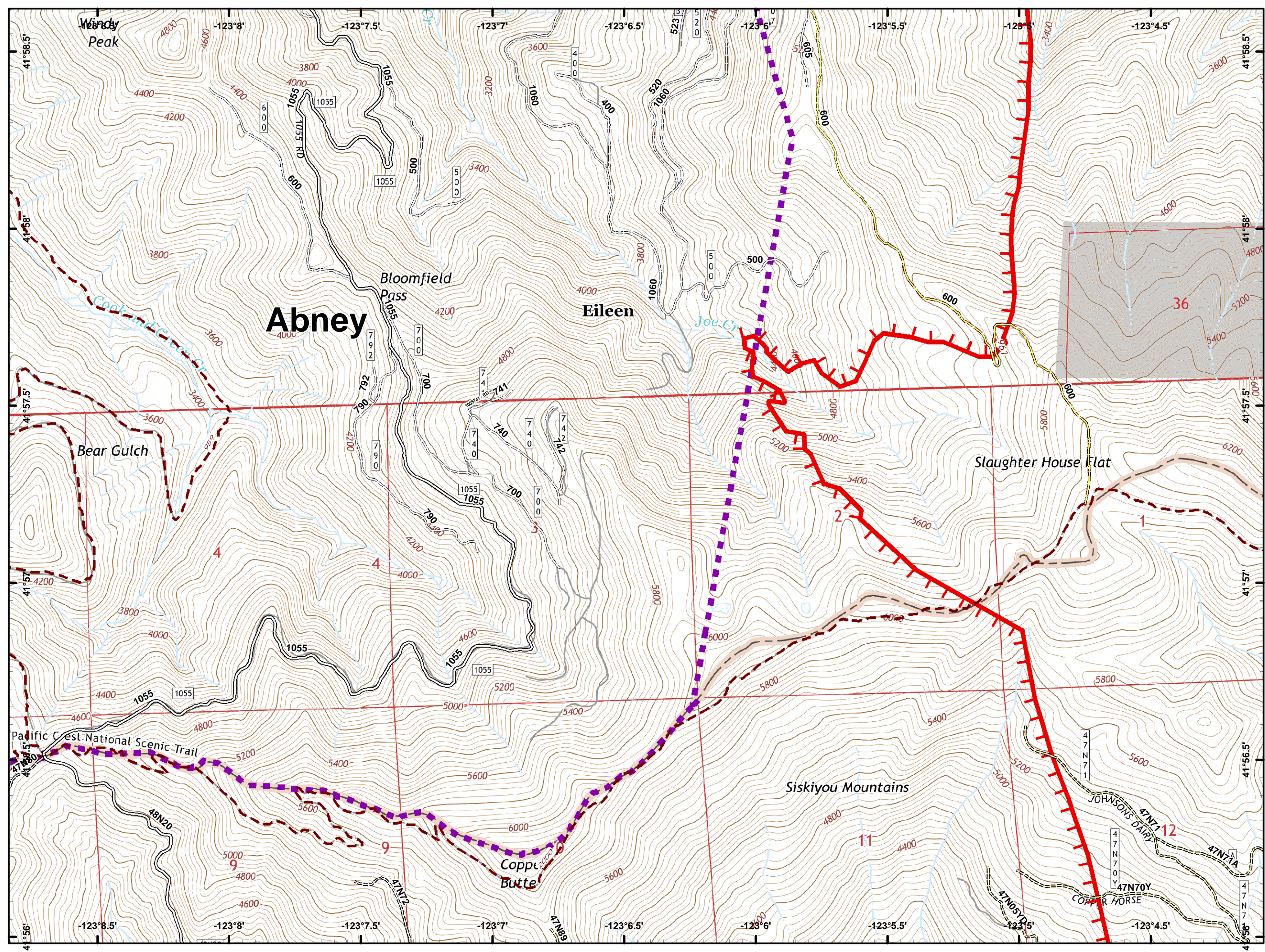


-  Dip Site
-  Drop Point
-  Fire Location
-  Repeater
-  Uncontrolled Fire Edge
-  IA Responsibility
-  Wilderness



 Uncontrolled  
Fire Edge

 IA  
Responsibility





- Drop Point
- ]] Branch Break
- XXXXX Completed Dozer Line
- - - Completed Hand Line

