

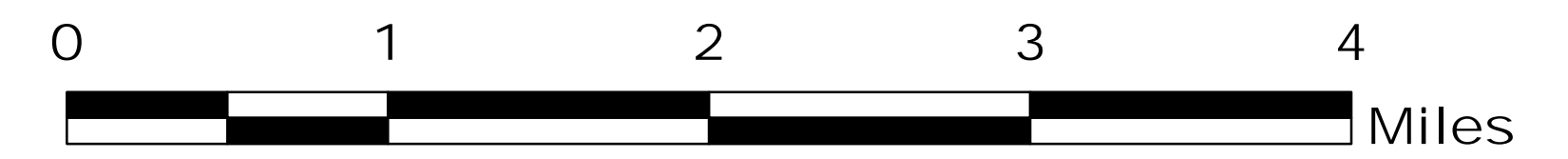
MILLER COMPLEX OR-RSF-000647

Operations Map 9/6/17

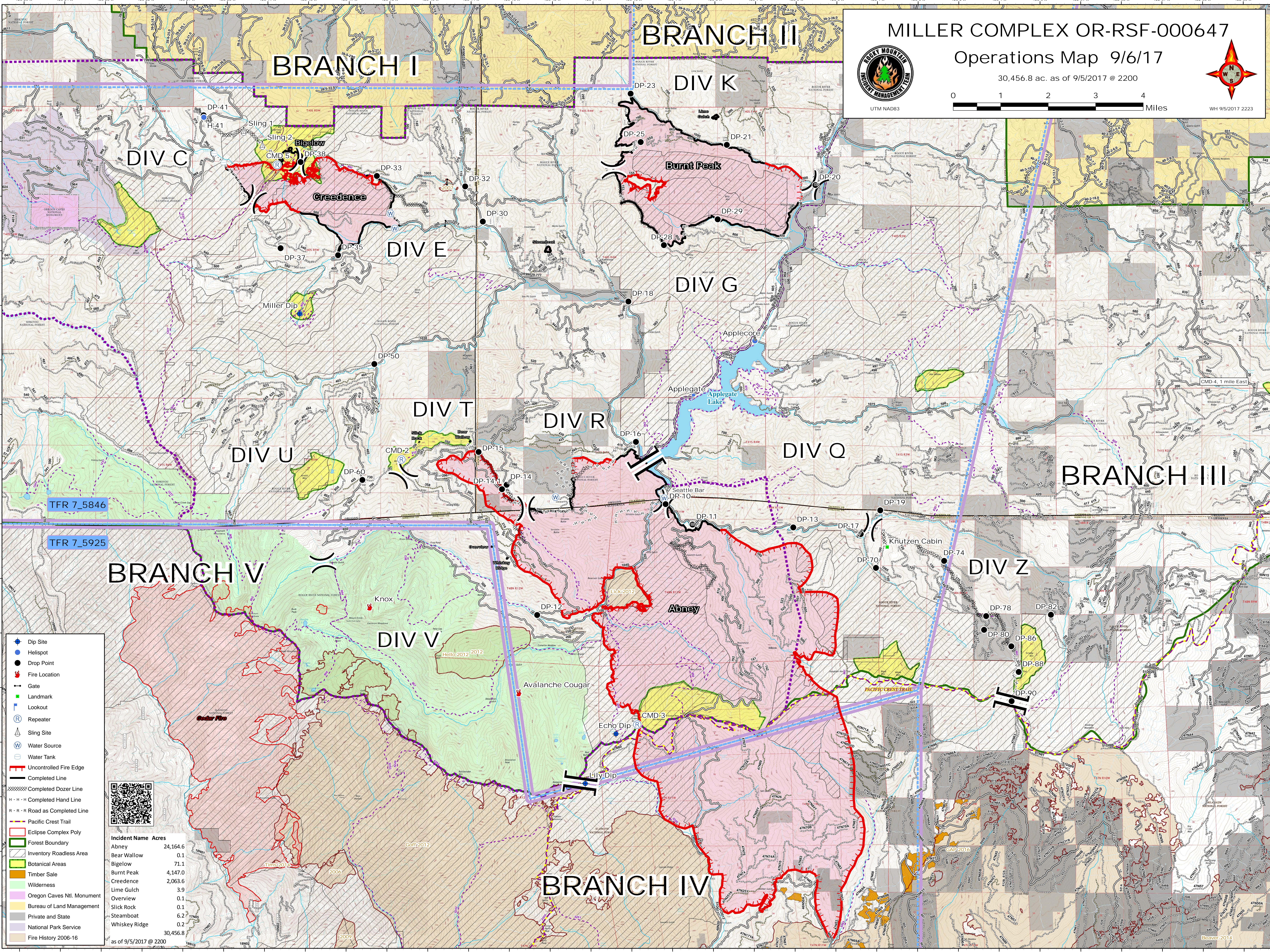
30,456.8 ac. as of 9/5/2017 @ 2200



UTM NAD83



WH 9/5/2017 2223



- Dip Site
- Helispot
- Drop Point
- Fire Location
- Gate
- Landmark
- Lookout
- Repeater
- Sling Site
- Water Source
- Water Tank
- Uncontrolled Fire Edge
- Completed Line
- Completed Dozer Line
- Completed Hand Line
- Road as Completed Line
- Pacific Crest Trail
- Eclipse Complex Poly
- Forest Boundary
- Inventory Roadless Area
- Botanical Areas
- Timber Sale
- Wilderness
- Oregon Caves Ntl. Monument
- Bureau of Land Management
- Private and State
- National Park Service
- Fire History 2006-16

Incident Name	Acres
Abney	24,164.6
Bear Wallow	0.1
Bigelow	71.1
Burnt Peak	4,147.0
Creedence	2,063.6
Lime Gulch	3.9
Overview	0.1
Slick Rock	0.1
Steamboat	6.2
Whiskey Ridge	0.2
Total	30,456.8

as of 9/5/2017 @ 2200

