
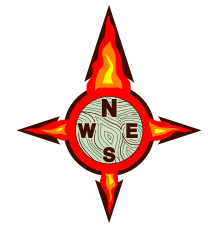



MILLER COMPLEX OR-RSF-000647
 Branch III (Q,Z) OPS 9/6/17
 30,457 ac. as of 9/5/17 @ 2200

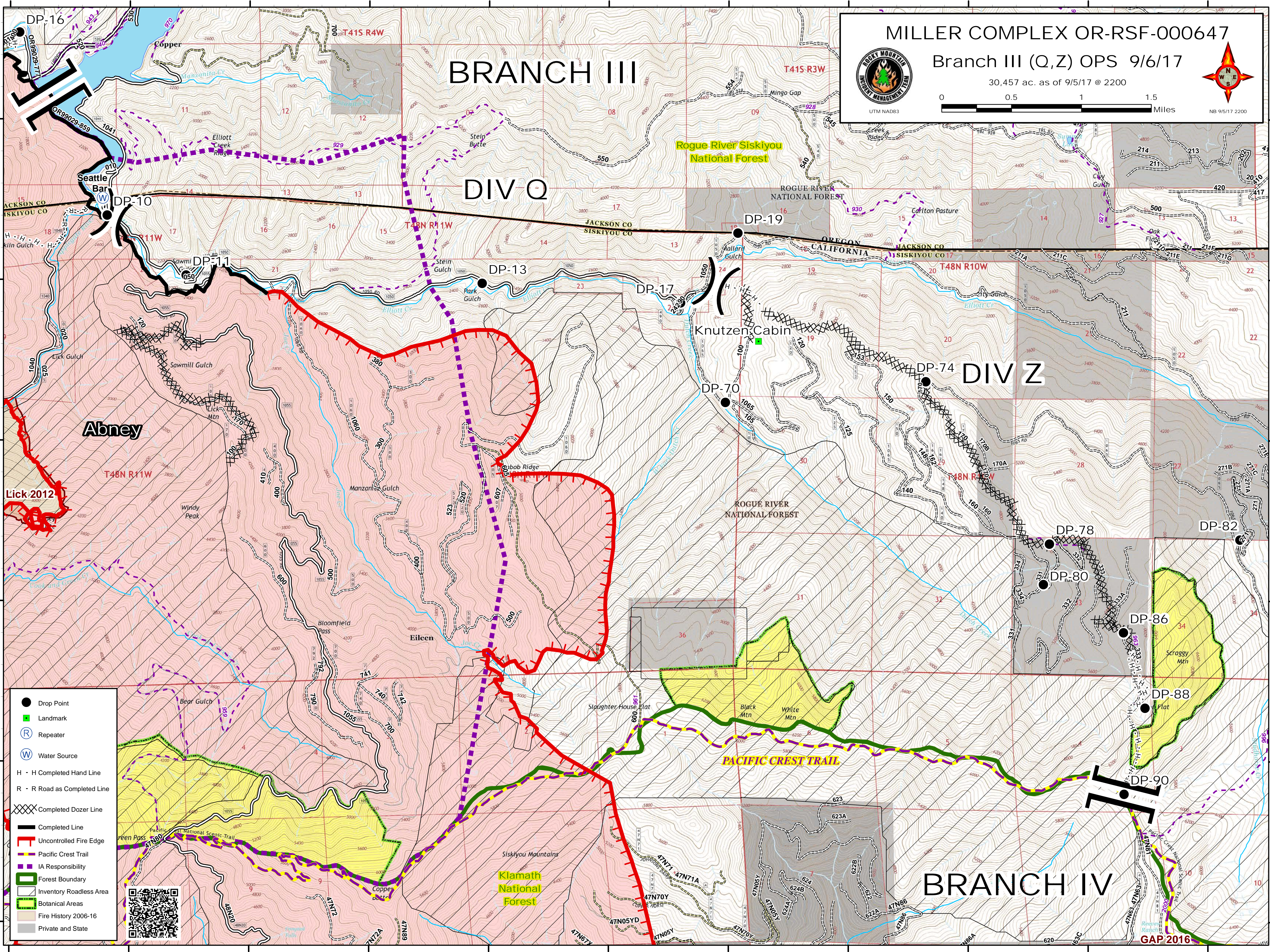
UTM NAD83

BRANCH III

DIV Q

DIV Z

BRANCH IV



- Drop Point
- Landmark
- Ⓡ Repeater
- Ⓜ Water Source
- H - H Completed Hand Line
- R - R Road as Completed Line
- XXXX Completed Dozer Line
- Completed Line
- Uncontrolled Fire Edge
- Pacific Crest Trail
- IA Responsibility
- Forest Boundary
- Inventory Roadless Area
- Botanical Areas
- Fire History 2006-16
- Private and State



GAP 2016