

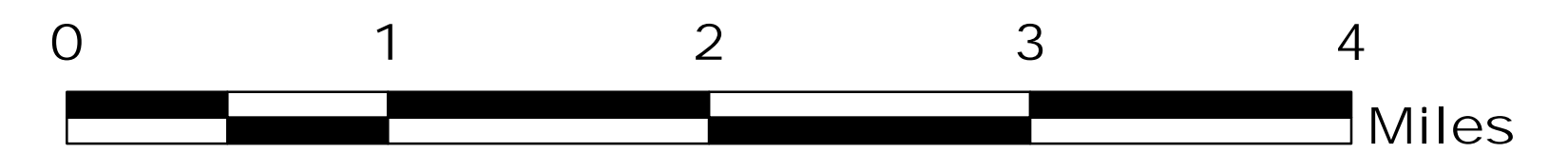
# MILLER COMPLEX OR-RSF-000647

## Operations Map 9/7/17

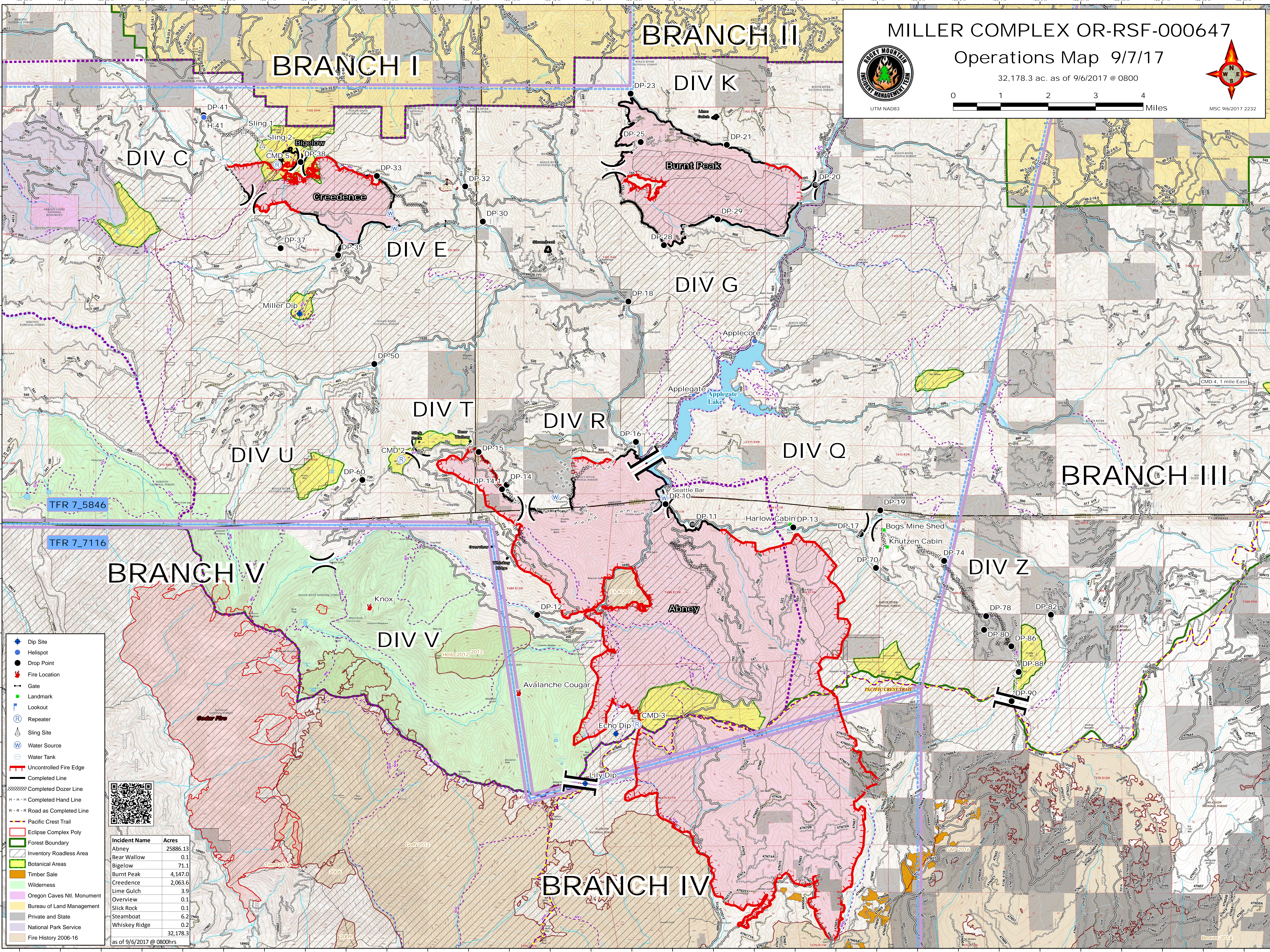
32,178.3 ac. as of 9/6/2017 @ 0800



UTM NAD83



MSC 9/6/2017 2232



- Dip Site
- Helispot
- Drop Point
- Fire Location
- Gate
- Landmark
- Lookout
- Repeater
- Sling Site
- Water Source
- Water Tank
- Uncontrolled Fire Edge
- Completed Line
- Completed Dozer Line
- Completed Hand Line
- Road as Completed Line
- Pacific Crest Trail
- Eclipse Complex Poly
- Forest Boundary
- Inventory Roadless Area
- Botanical Areas
- Timber Sale
- Wilderness
- Oregon Caves Ntl. Monument
- Bureau of Land Management
- Private and State
- National Park Service
- Fire History 2006-16



| Incident Name | Acres           |
|---------------|-----------------|
| Abney         | 25886.13        |
| Bear Wallow   | 0.1             |
| Bigelow       | 71.1            |
| Burnt Peak    | 4,147.0         |
| Creedence     | 2,063.6         |
| Lime Gulch    | 3.9             |
| Overview      | 0.1             |
| Slick Rock    | 0.1             |
| Steamboat     | 6.2             |
| Whiskey Ridge | 0.2             |
| <b>Total</b>  | <b>32,178.3</b> |

as of 9/6/2017 @ 0800hrs