

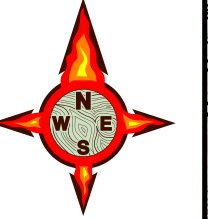
MILLER COMPLEX OR-RSF-000647

Branch I OPS 9/7/17

Credence Fire - 2,063 ac. as of 9/6/17 @ 0800



UTM NAD83



MSC 9/6/17 2200

BRANCH I

DIV C

DIV E

Credence

Miller Dip

CMD 5

Sling 1

Sling 2

DP-41

H-41

DP-38

DP-33

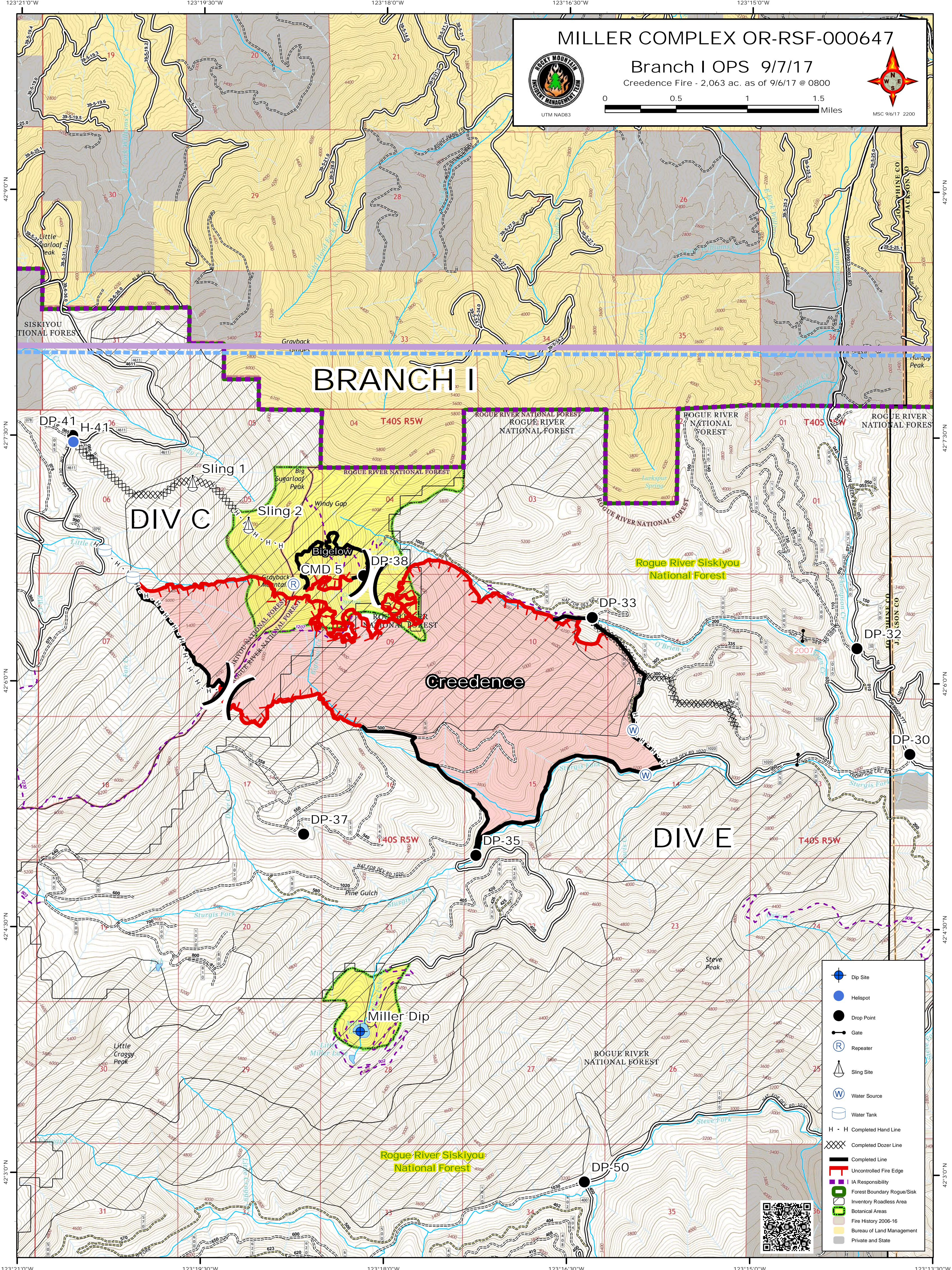
DP-32

DP-30

DP-37

DP-35

DP-50



- Dip Site
- Helispot
- Drop Point
- Gate
- Repeater
- Sling Site
- Water Source
- Water Tank
- H - H Completed Hand Line
- Completed Dozer Line
- Completed Line
- Uncontrolled Fire Edge
- IA Responsibility
- Forest Boundary Rogue/Sisk
- Inventory Roadless Area
- Botanical Areas
- Fire History 2006-16
- Bureau of Land Management
- Private and State

