

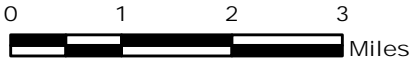
# MILLER COMPLEX OR-RSF-000647



Public Information Map 9/7



UTM Zone 10 NAD83

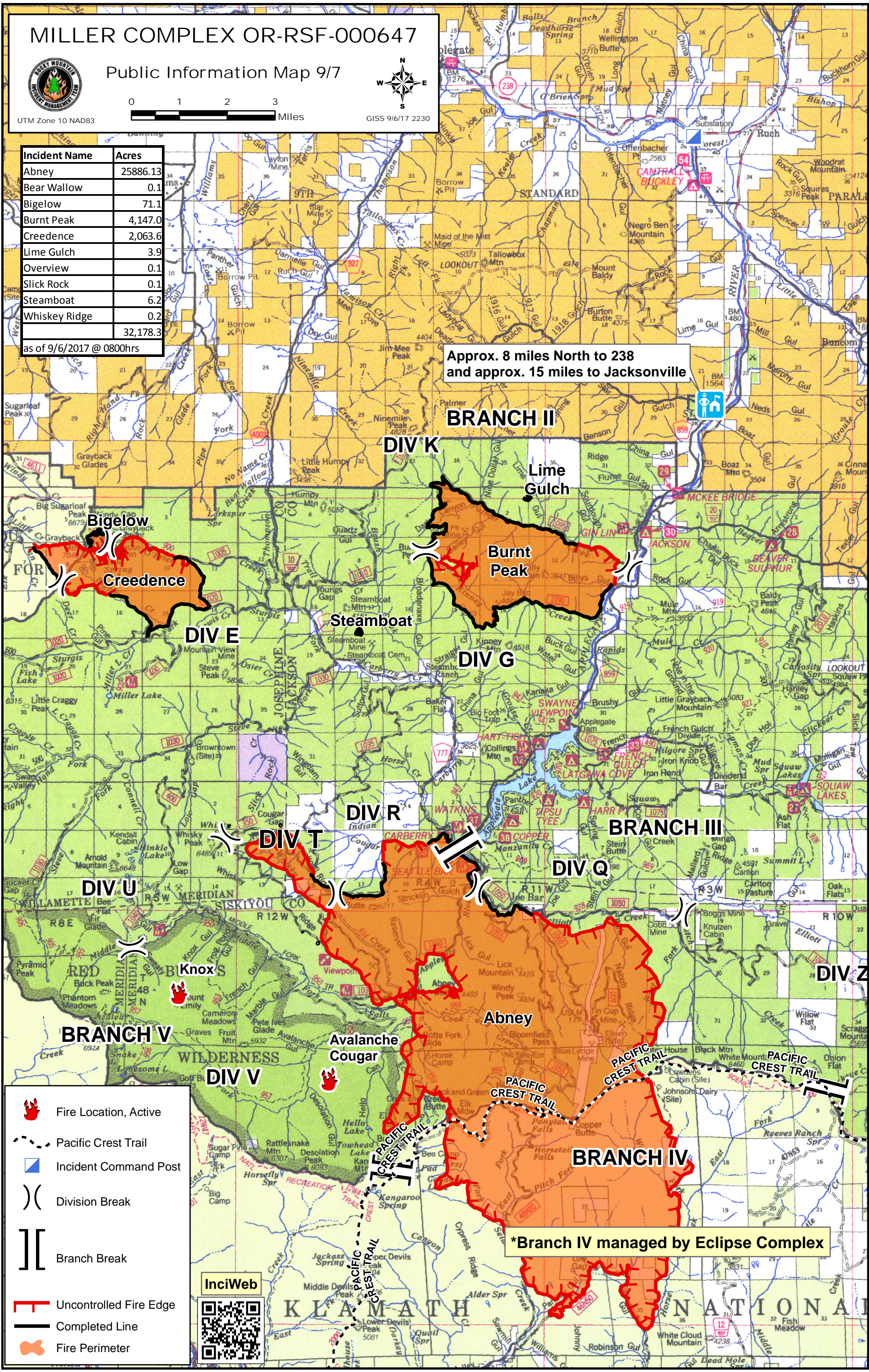


GISS 9/6/17 2230

Incident Name	Acres
Abney	25886.13
Bear Wallow	0.1
Bigelow	71.1
Burnt Peak	4,147.0
Credence	2,063.6
Lime Gulch	3.9
Overview	0.1
Slick Rock	0.1
Steamboat	6.2
Whiskey Ridge	0.2
<b>Total</b>	<b>32,178.3</b>

as of 9/6/2017 @ 0800hrs

Approx. 8 miles North to 238  
and approx. 15 miles to Jacksonville



- Fire Location, Active
- Pacific Crest Trail
- Incident Command Post
- Division Break
- Branch Break
- Uncontrolled Fire Edge
- Completed Line
- Fire Perimeter



\*Branch IV managed by Eclipse Complex