

MILLER COMPLEX OR-RSF-000647



Public Information Map 9/9



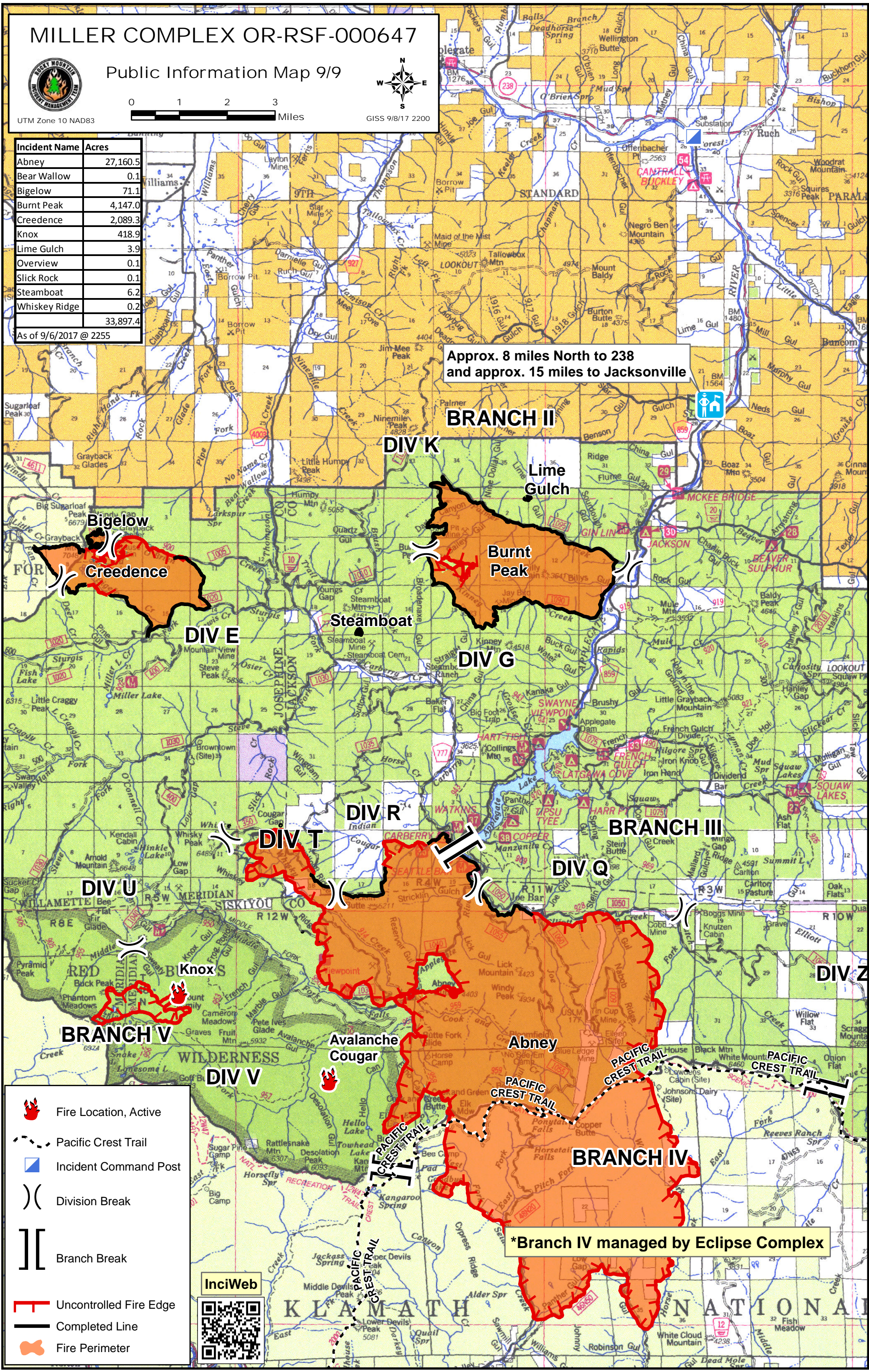
UTM Zone 10 NAD83

0 1 2 3 Miles

GISS 9/8/17 2200

Incident Name	Acres
Abney	27,160.5
Bear Wallow	0.1
Bigelow	71.1
Burnt Peak	4,147.0
Credence	2,089.3
Knox	418.9
Lime Gulch	3.9
Overview	0.1
Slick Rock	0.1
Steamboat	6.2
Whiskey Ridge	0.2
Total	33,897.4

As of 9/6/2017 @ 2255



Approx. 8 miles North to 238 and approx. 15 miles to Jacksonville

BRANCH II

DIV K

Lime Gulch

Burnt Peak

Bigelow

Credence

DIV E

Steamboat

DIV G

DIV R

DIV T

DIV U

Knox

BRANCH V

DIV V

Avalanche Cougar

Abney

BRANCH IV

*Branch IV managed by Eclipse Complex

- Fire Location, Active
- Pacific Crest Trail
- Incident Command Post
- Division Break
- Branch Break
- Uncontrolled Fire Edge
- Completed Line
- Fire Perimeter

