

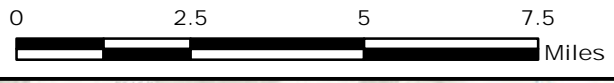
123°28'W 123°26'W 123°24'W 123°22'W 123°20'W 123°18'W 123°16'W 123°14'W 123°12'W 123°10'W 123°8'W 123°6'W 123°4'W 123°2'W 123°0'W 122°58'W

42°18'N 42°16'N 42°14'N 42°12'N 42°10'N 42°8'N 42°6'N 42°4'N 42°2'N 42°0'N 41°58'N 41°56'N 41°54'N 41°52'N 41°50'N 41°48'N 41°46'N 41°44'N 41°42'N 41°40'N

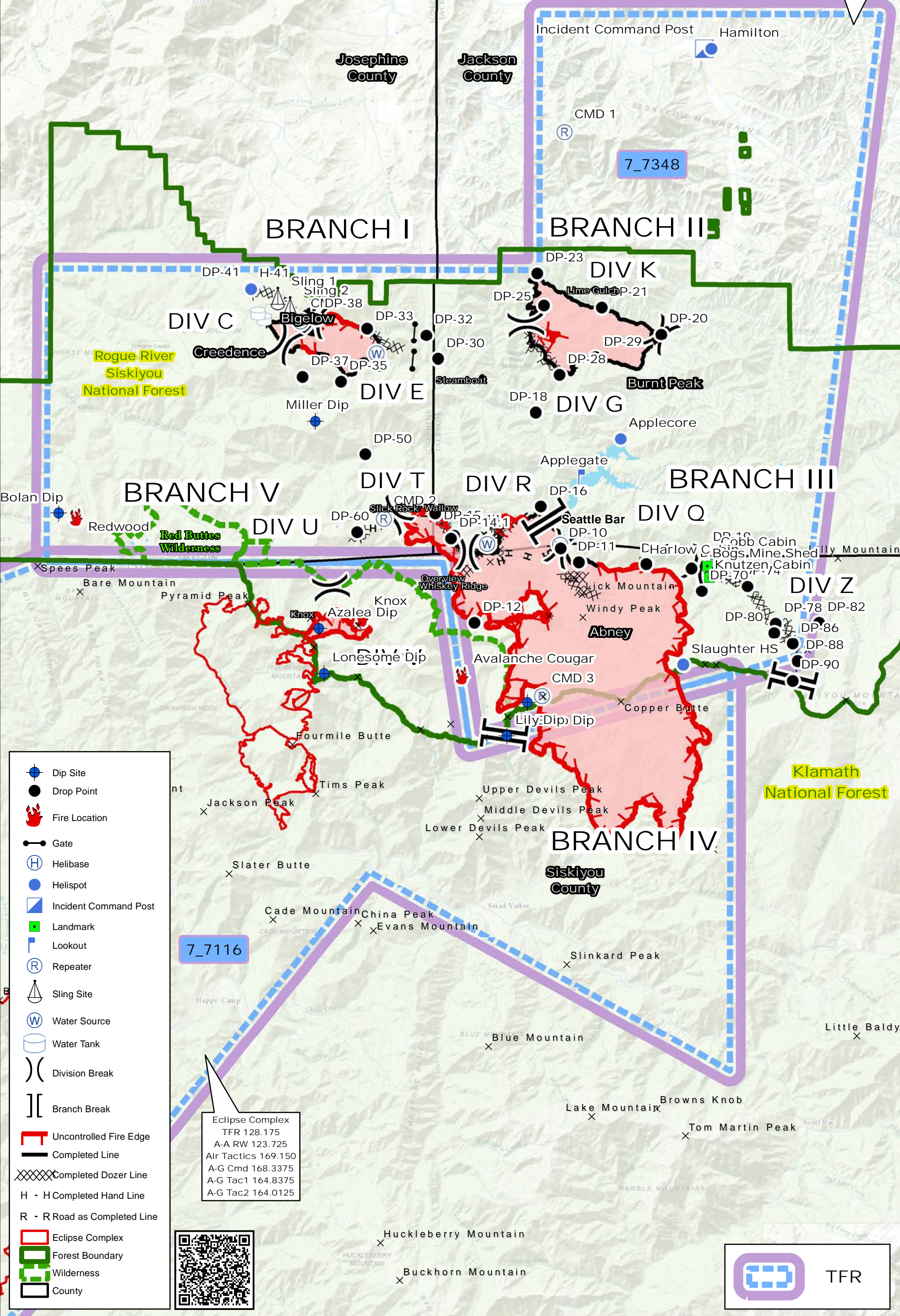


MILLER COMPLEX OR-RSF-000647

Pilot Map 9/10/17



Miller Complex
 A-A TFR 133.100
 A-A RW 135.550
 A-G-Primary 167.075
 A-G-Secondary 169.075
 Deck 163.100



- Dip Site
- Drop Point
- Fire Location
- Gate
- Helibase
- Helispot
- Incident Command Post
- Landmark
- Lookout
- Repeater
- Sling Site
- Water Source
- Water Tank
- Division Break
- Branch Break
- Uncontrolled Fire Edge
- Completed Line
- Completed Dozer Line
- H - H Completed Hand Line
- R - R Road as Completed Line
- Eclipse Complex
- Forest Boundary
- Wilderness
- County

Eclipse Complex
 TFR 128.175
 A-A RW 123.725
 Air Tactics 169.150
 A-G Cmd 168.3375
 A-G Tac1 164.8375
 A-G Tac2 164.0125



123°28'W 123°26'W 123°24'W 123°22'W 123°20'W 123°18'W 123°16'W 123°14'W 123°12'W 123°10'W 123°8'W 123°6'W 123°4'W 123°2'W 123°0'W 122°58'W

41°40'N 41°42'N 41°44'N 41°46'N 41°48'N 41°50'N 41°52'N 41°54'N 41°56'N 41°58'N 42°0'N 42°2'N 42°4'N 42°6'N 42°8'N 42°10'N 42°12'N 42°14'N 42°16'N 42°18'N