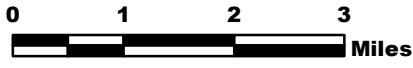


MILLER COMPLEX OR-RSF-000647

Public Information Map 9/11



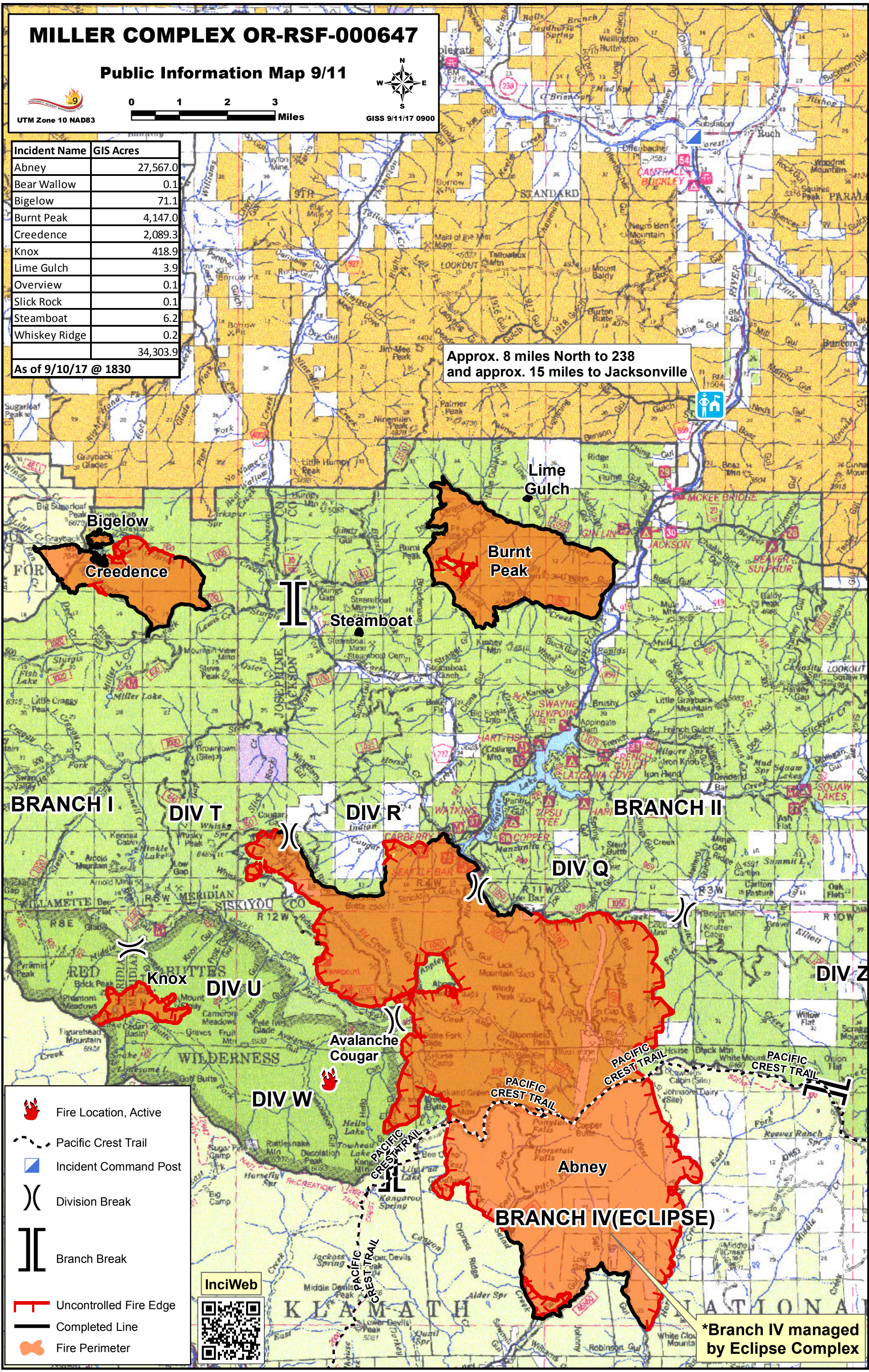
UTM Zone 10 NAD83



Incident Name	GIS Acres
Abney	27,567.0
Bear Wallow	0.1
Bigelow	71.1
Burnt Peak	4,147.0
Credence	2,089.3
Knox	418.9
Lime Gulch	3.9
Overview	0.1
Slick Rock	0.1
Steamboat	6.2
Whiskey Ridge	0.2
	34,303.9

As of 9/10/17 @ 1830

Approx. 8 miles North to 238 and approx. 15 miles to Jacksonville



Bigelow
Credence

Burnt Peak

Steamboat

Lime Gulch

BRANCH I

DIV T

DIV R

BRANCH II

DIV Q

Knox

DIV U

Avalanche Cougar

DIV W

Abney

BRANCH IV(ECLIPSE)

- Fire Location, Active
- Pacific Crest Trail
- Incident Command Post
- Division Break
- Branch Break
- Uncontrolled Fire Edge
- Completed Line
- Fire Perimeter



*Branch IV managed by Eclipse Complex