

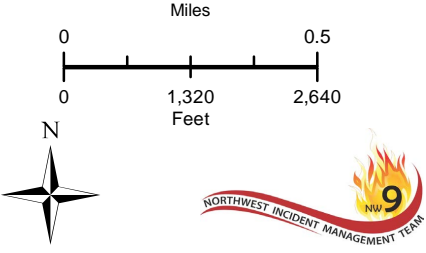
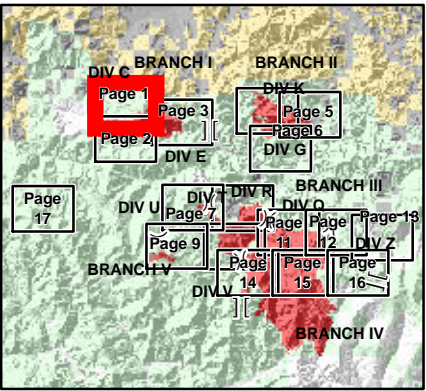
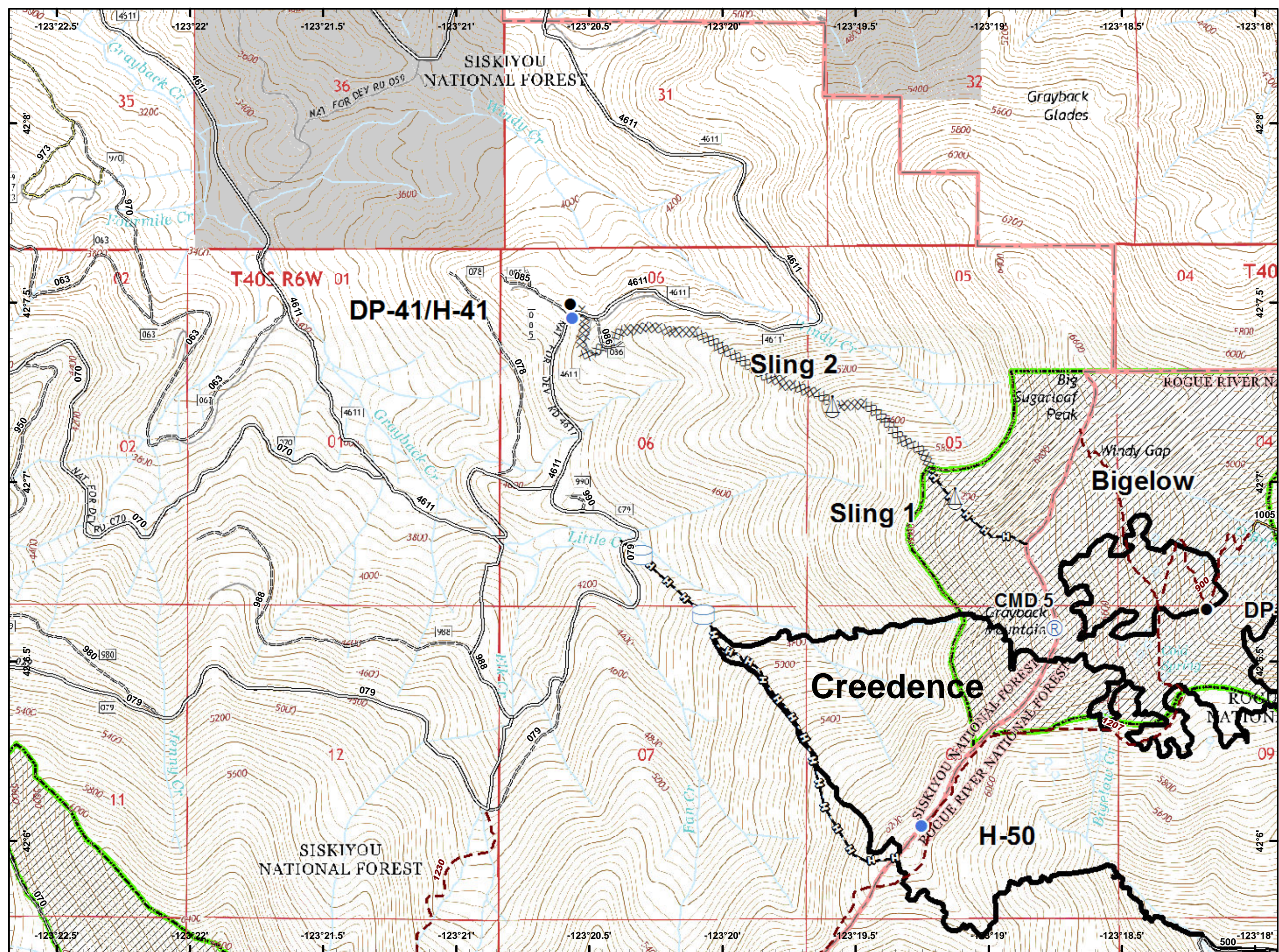
- Camp
- Dip Site
- Drop Point
- Fire Location
- Gate
- Helispot
- Landmark
- Lookout
- Repeater
- Sling Site
- Water
- Water
- Value at
- Division
- Branch
- Uncontrolled Fire Edge
- Completed
- Completed Dozer
- Completed Hand
- Road as Completed Line
- Administrative Forest Boundary
- NHD Water Boundaries
- Rivers
- Wilderness
- Private








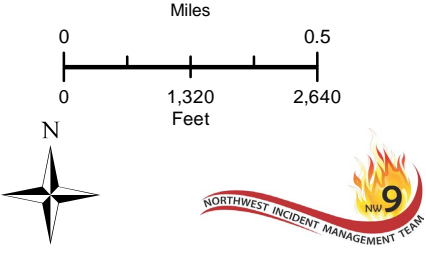
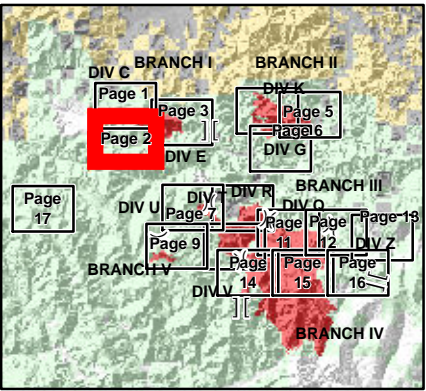
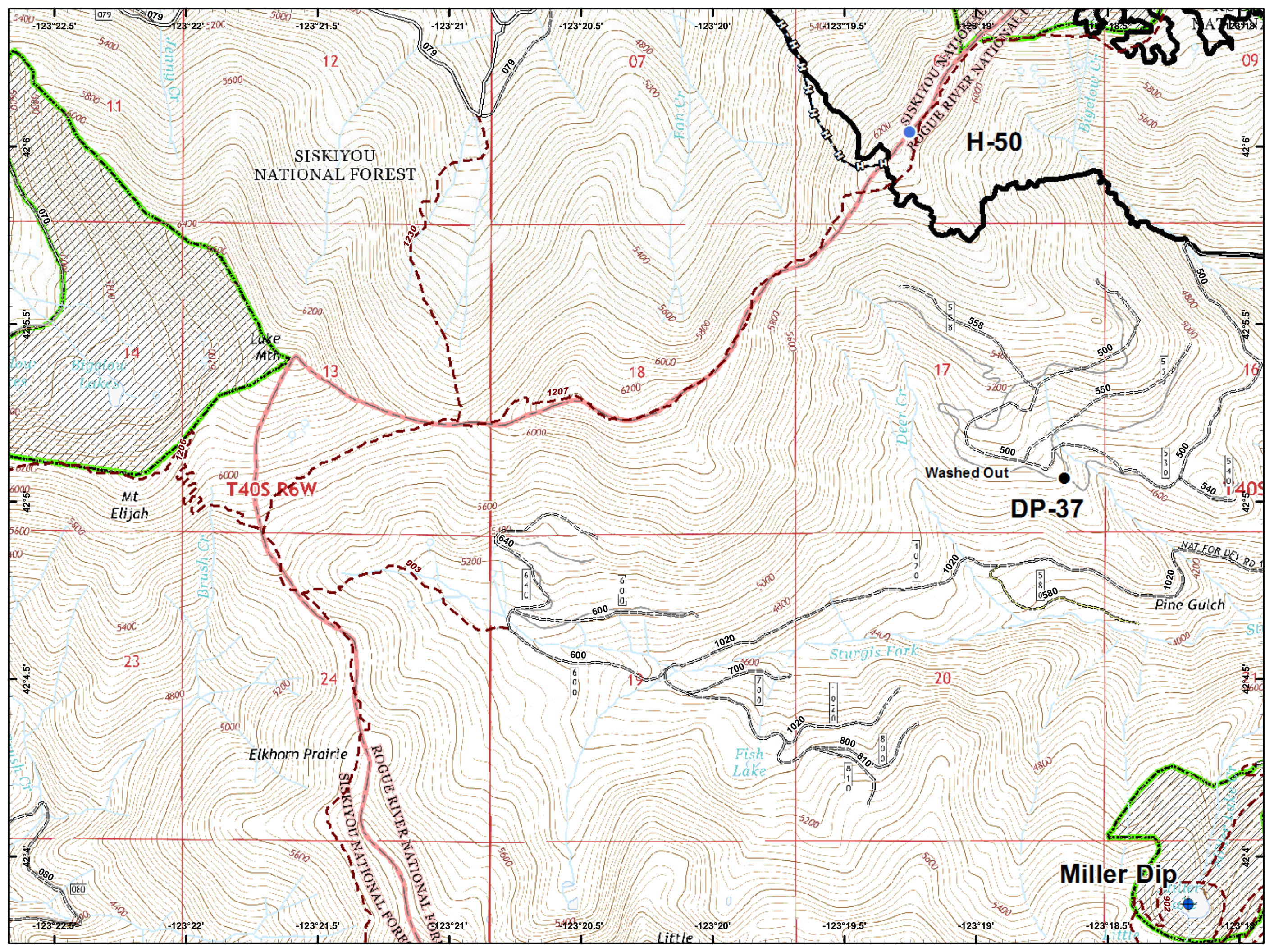
0 1 2 3 Miles



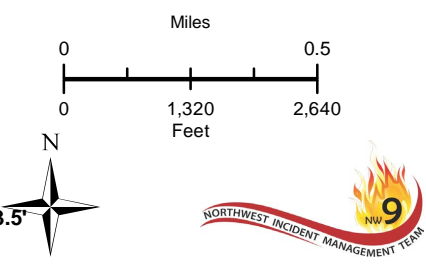
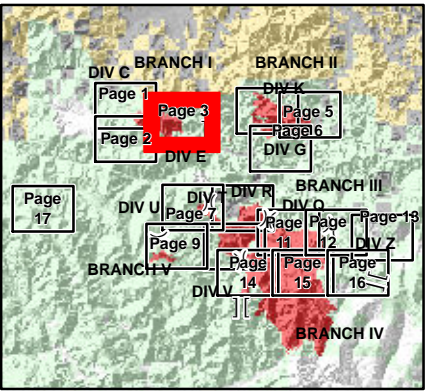
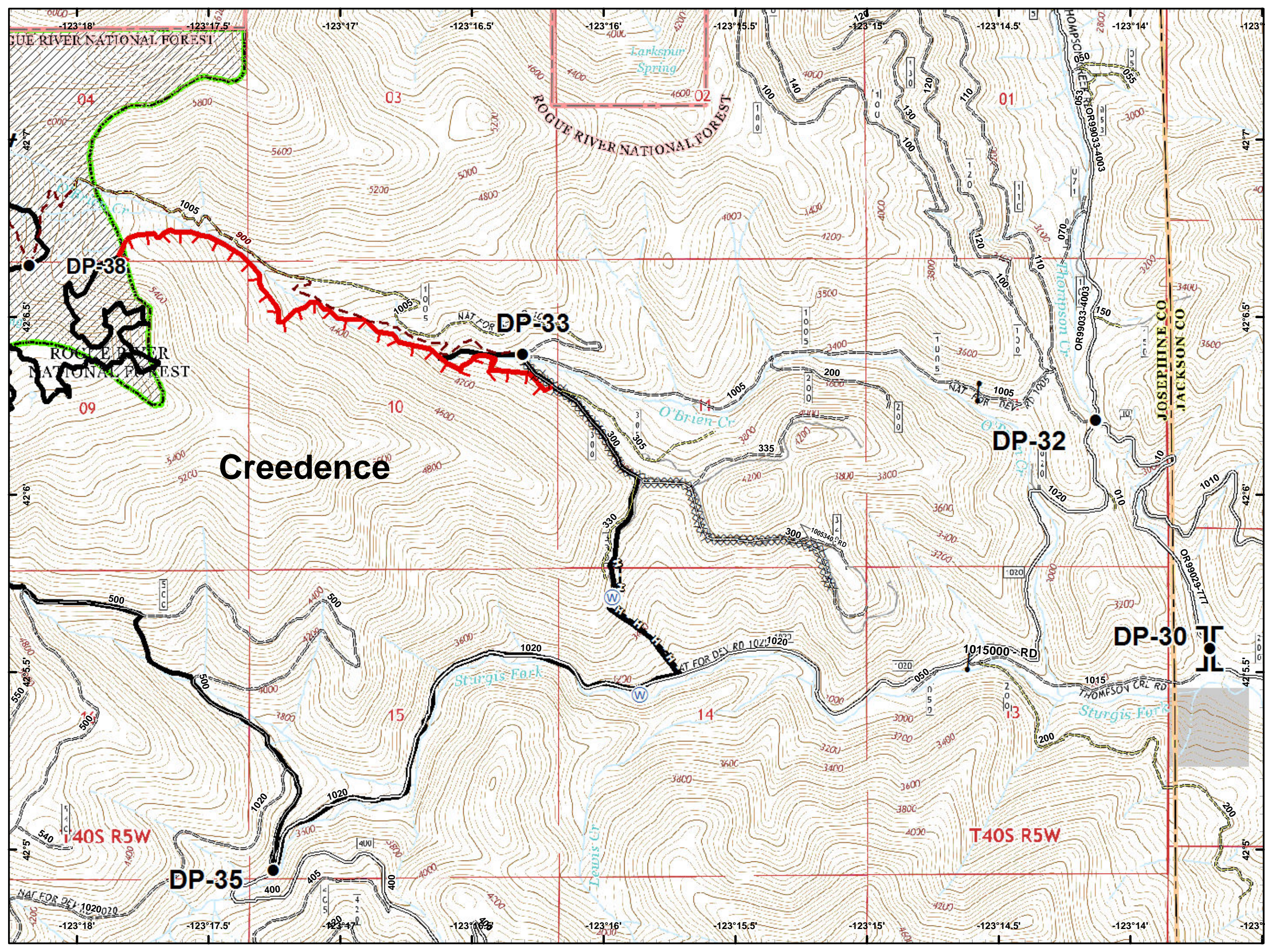
- Drop Point
- Helispot
- Ⓡ Repeater
- ⚓ Sling Site
- ⌚ Water Tank
- ~ Completed Line
- ⊘ Completed Dozer Line
- ⊘ Completed Hand Line
- ⊕ Private and State



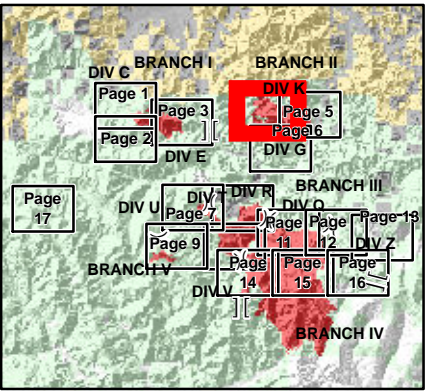
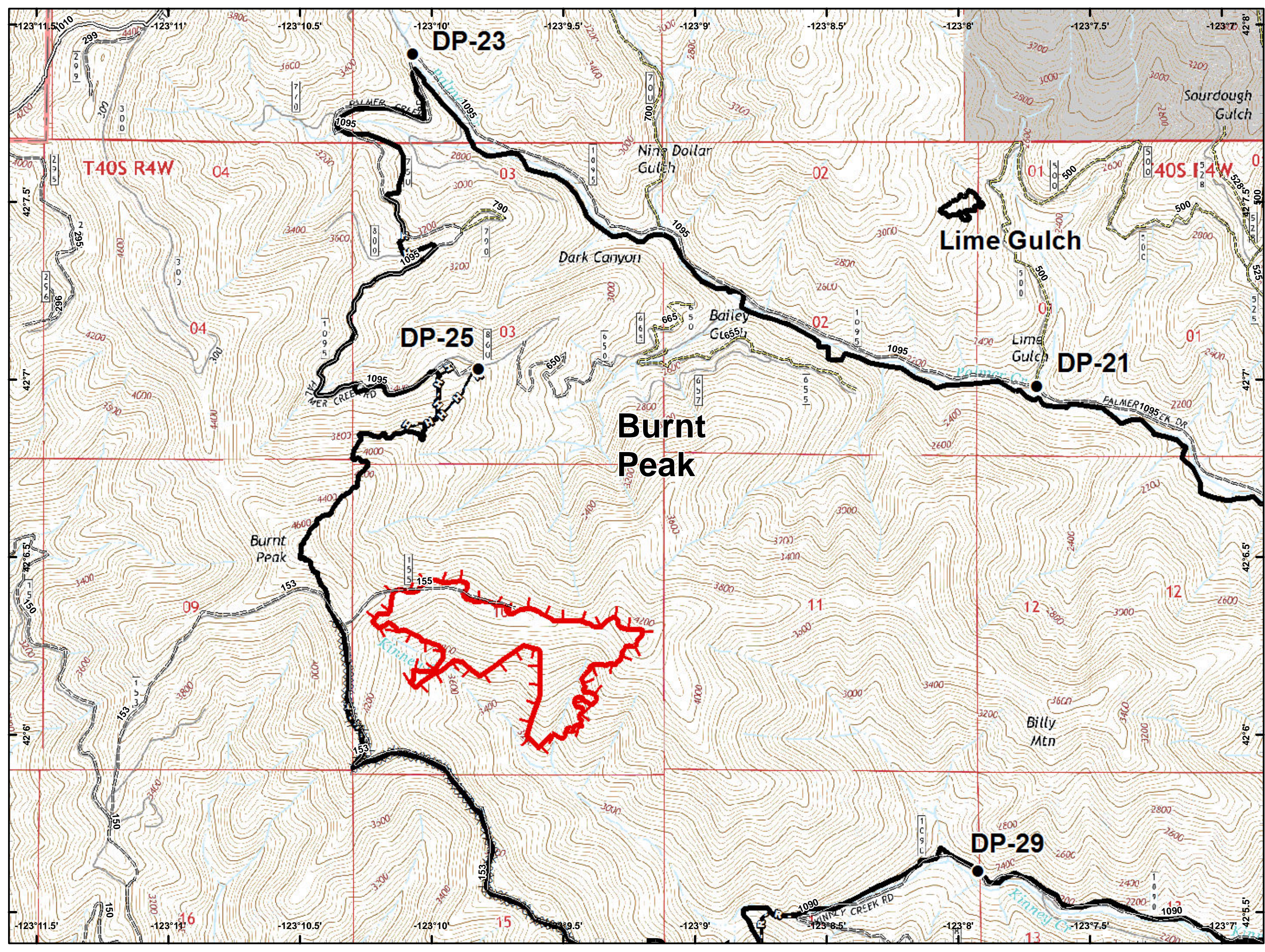
-  Dip Site
-  Drop Point
-  Helispot
-  Completed Line
-  Completed Hand Line



- Drop Point
- Gate
- ⊕ Water Source
-]] Branch Break
- 🔴 Uncontrolled Fire Edge
- ⤿ Completed Line
- ⊗ Completed Dozer Line
- ⊕ Completed Hand Line
- ⊕ Private and State

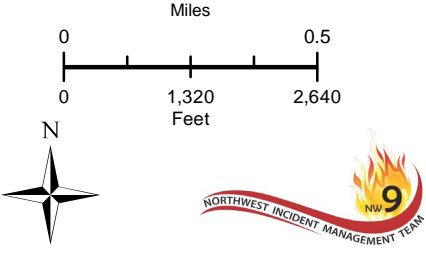
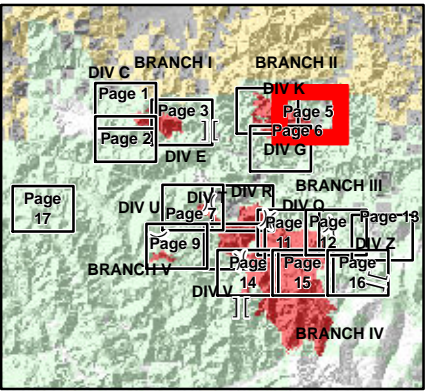
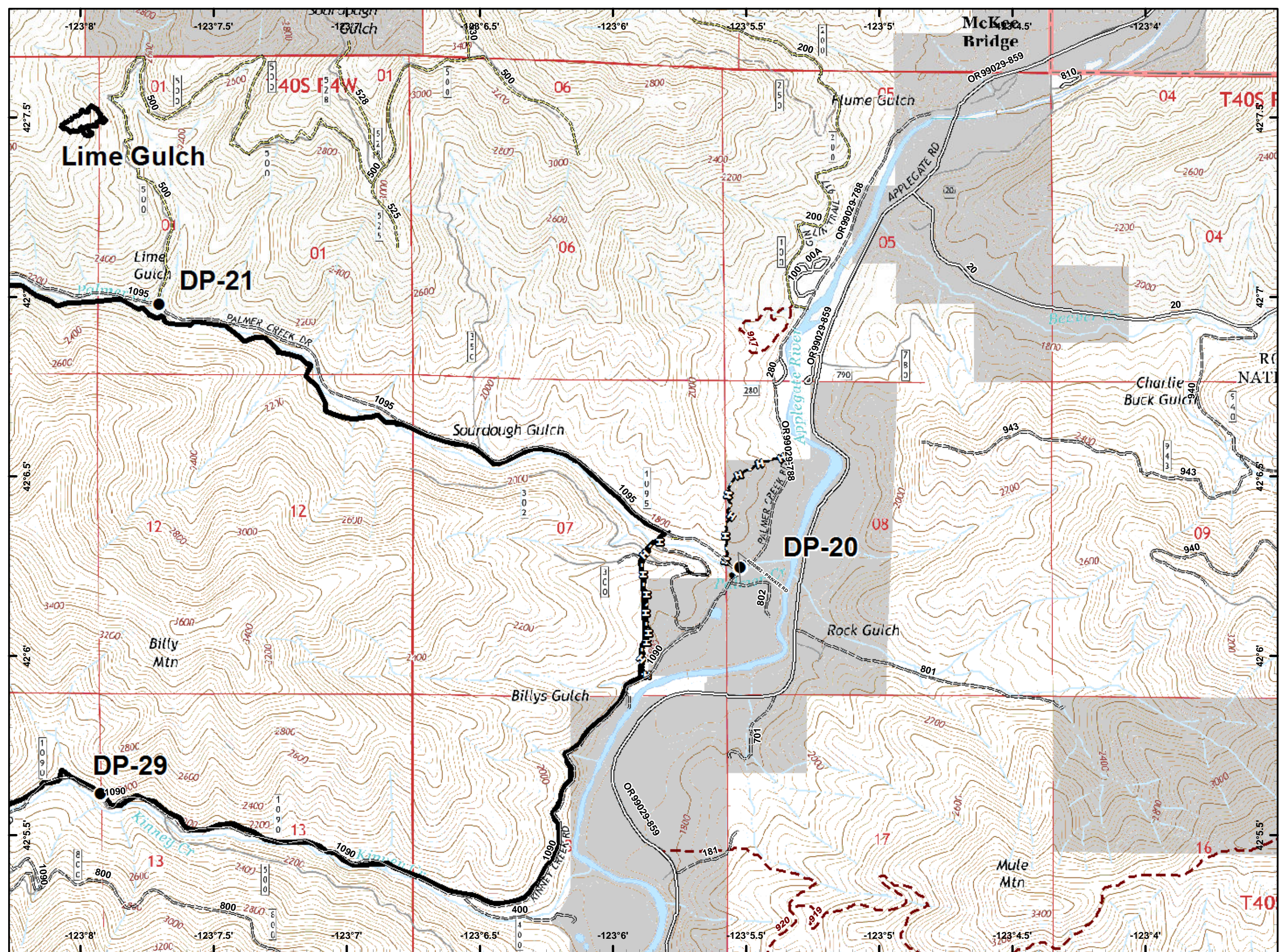


- Drop Point
- 🔴 Uncontrolled Fire Edge
- ⚫ Completed Line
- 🔲 Completed Dozer Line
- 🔲 Completed Hand Line
- 🔲 Road as Completed Line
- ⬜ Private and State

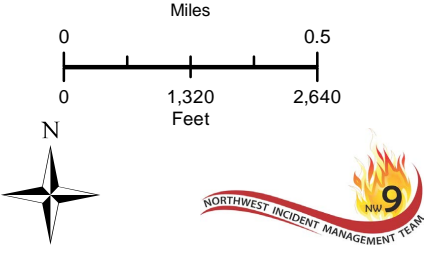
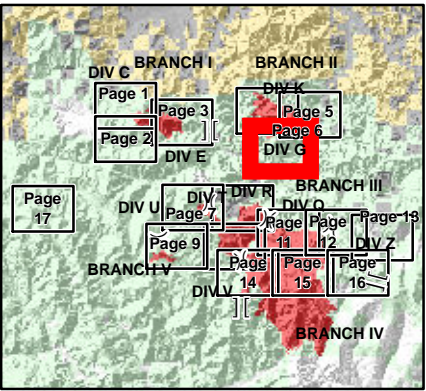
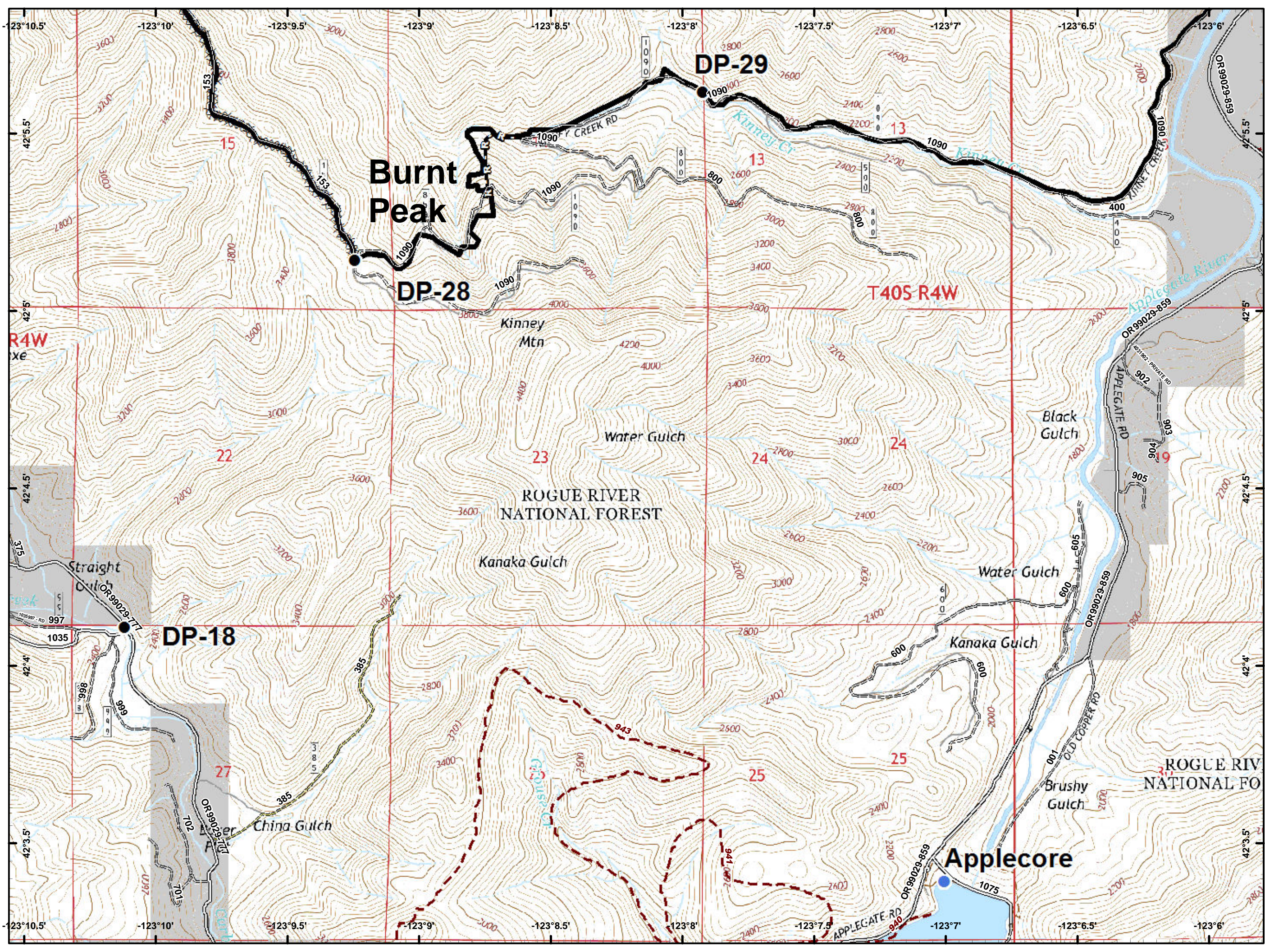


Miles 0 0.5
Feet 0 1,320 2,640

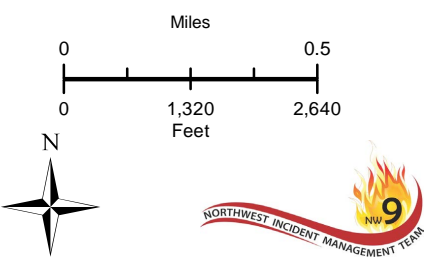
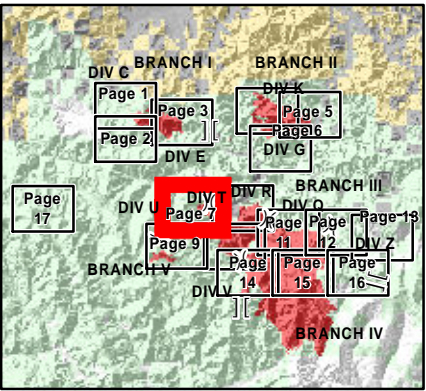
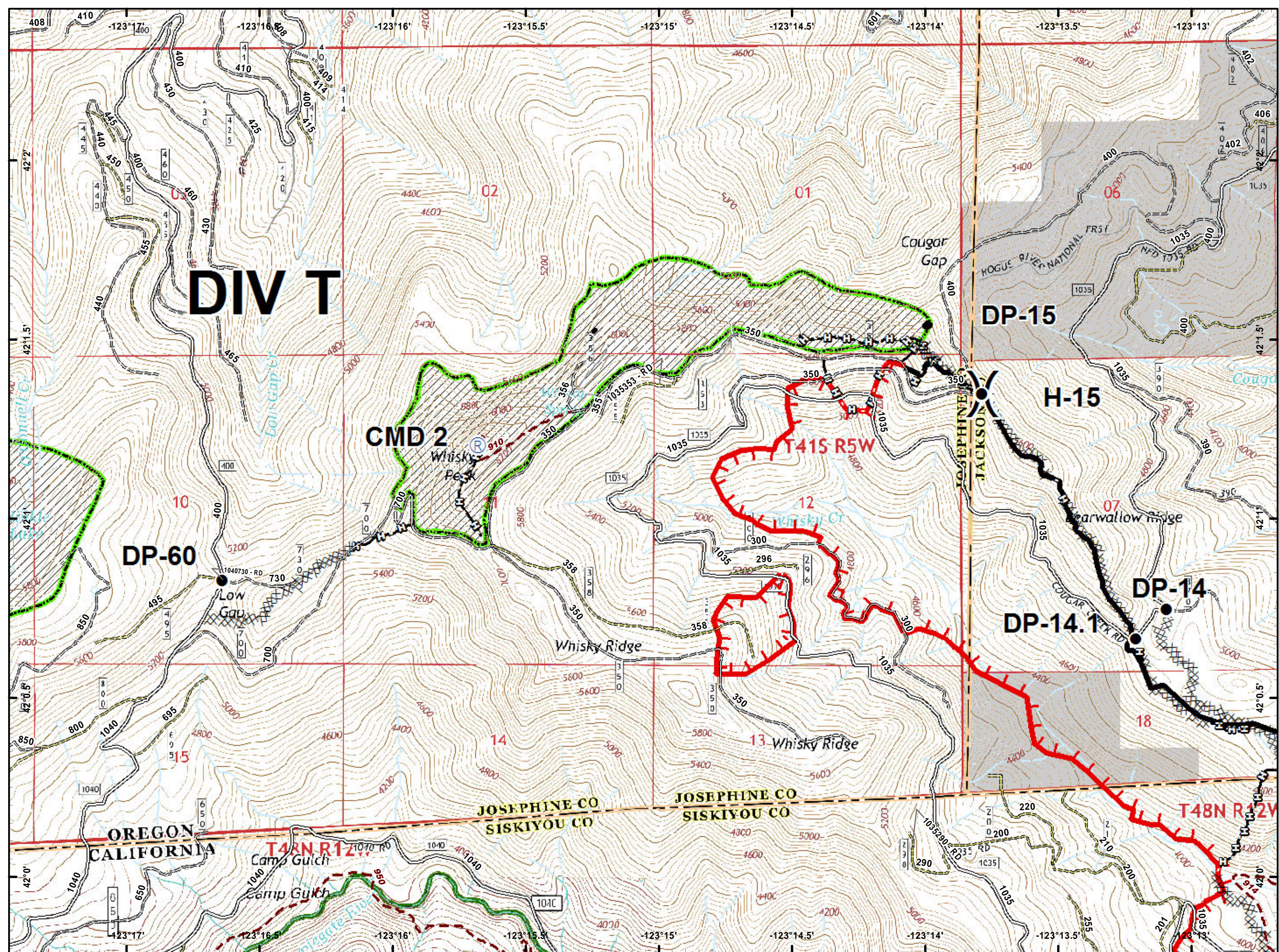
- Drop Point
- Gate
- ~ Completed Line
- ~ Completed Hand Line
- ~ Miller_Compl...
- Private and State



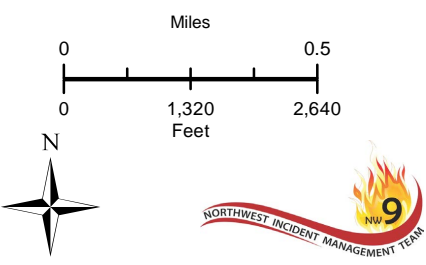
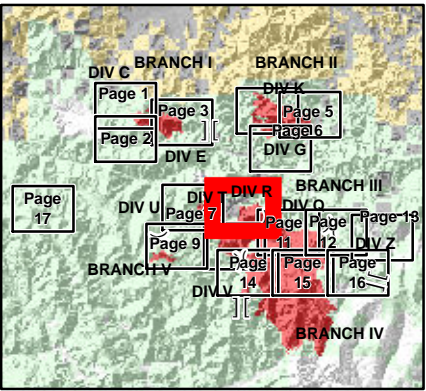
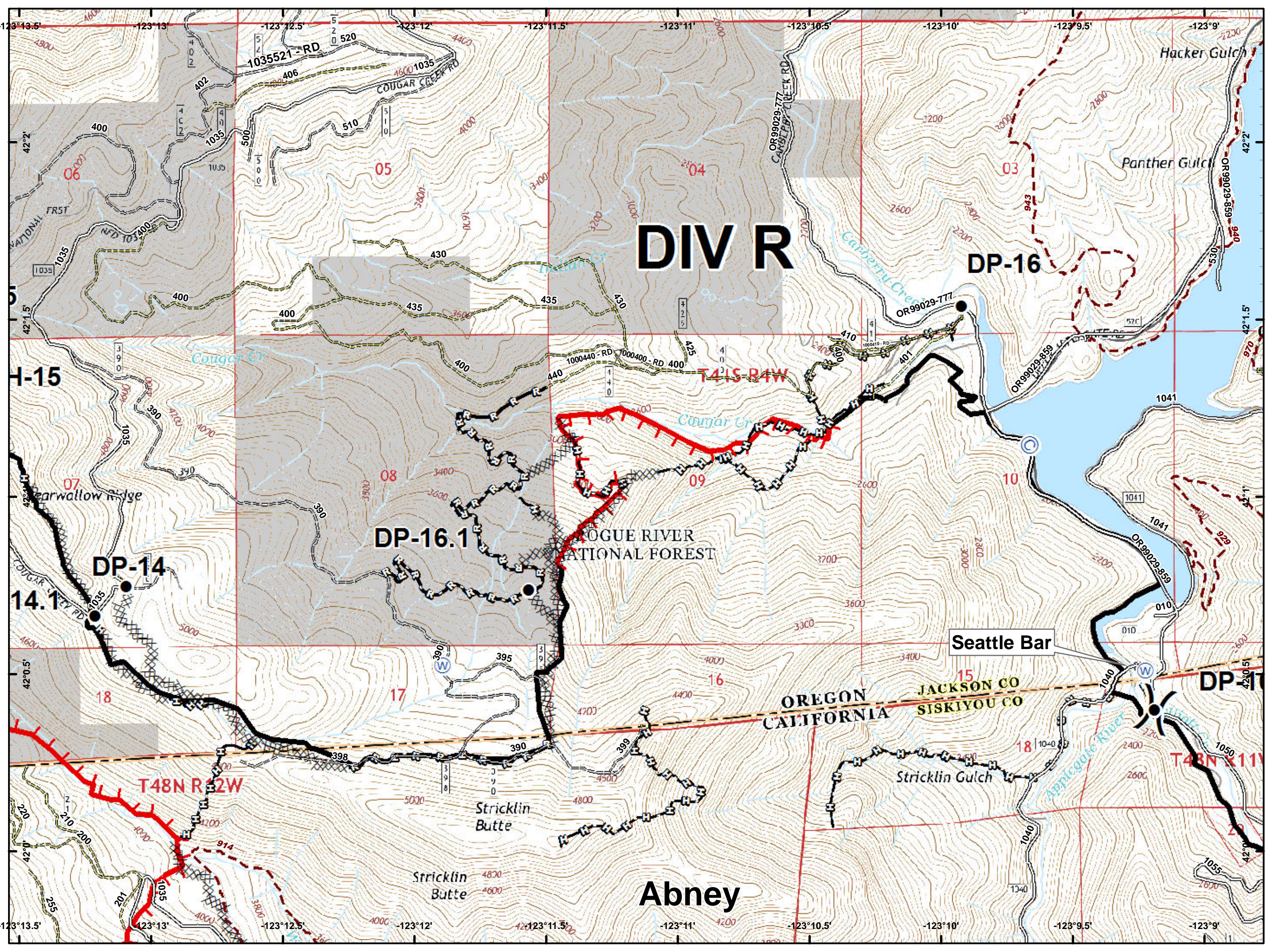
- Drop Point
- Helispot
- ~ Completed Line
- ⊞ Completed Dozer Line
- ⊞ Road as Completed Line
- ⊞ Private and State



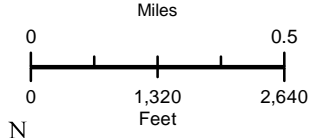
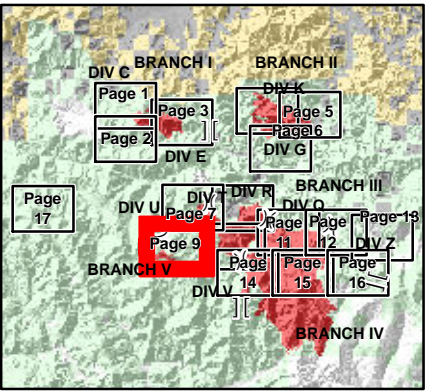
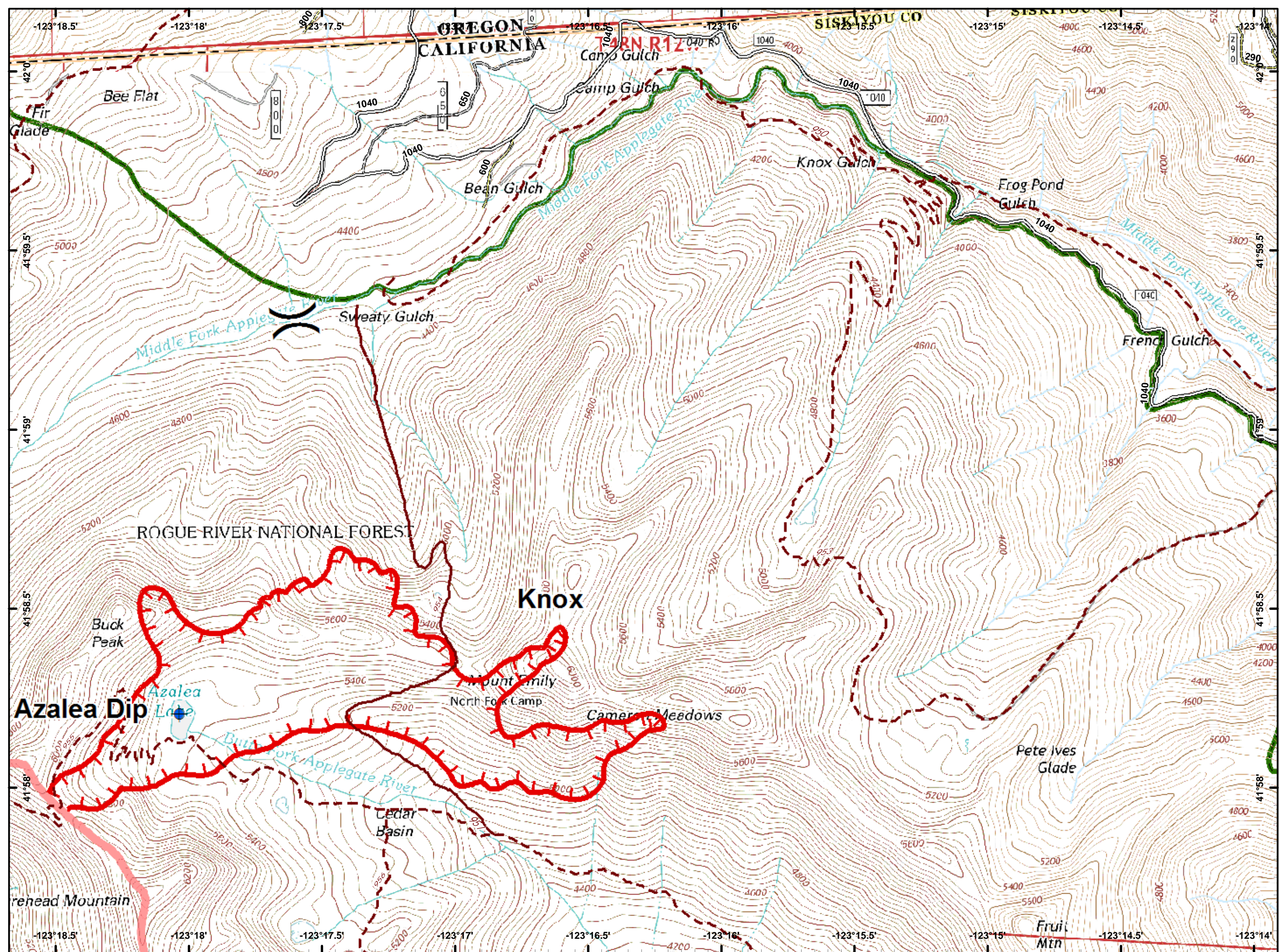
- Drop Point
- Helispot
- Ⓡ Repeater
-) (Division Break
- 🔴 Uncontrolled Fire Edge
- ⤿ Completed Line
- ⊘ Completed Dozer Line
- ⊘ Completed Hand Line
- 🌿 Wilderness
- ⊕ Private and State



- Ⓒ Camp
- Drop Point
- Ⓜ Water Source
- ⚠ Value at Risk
-) (Division Break
- 🔴 Uncontrolled Fire Edge
- ⚫ Completed Line
- ⚡ Completed Dozer Line
- ⚡ Completed Hand Line
- 🛣 Road as Completed Line
- ⬜ Private and State



-  Dip Site
-  Division Break
-  Uncontrolled Fire Edge
-  Wilderness



- Drop Point
-) (Division Break
- 🔴 Uncontrolled Fire Edge
- ⚫ Completed Line
- 🔲 Completed Dozer Line
- 🔲 Completed Hand Line
- 🟩 Wilderness

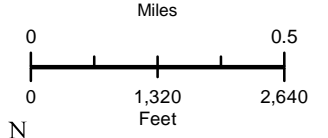
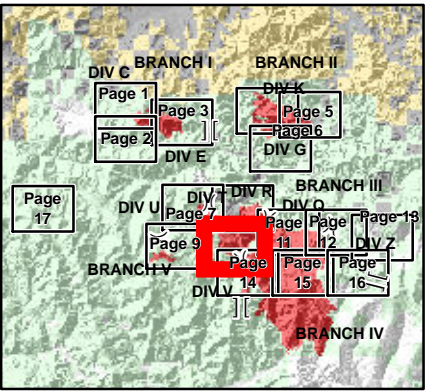
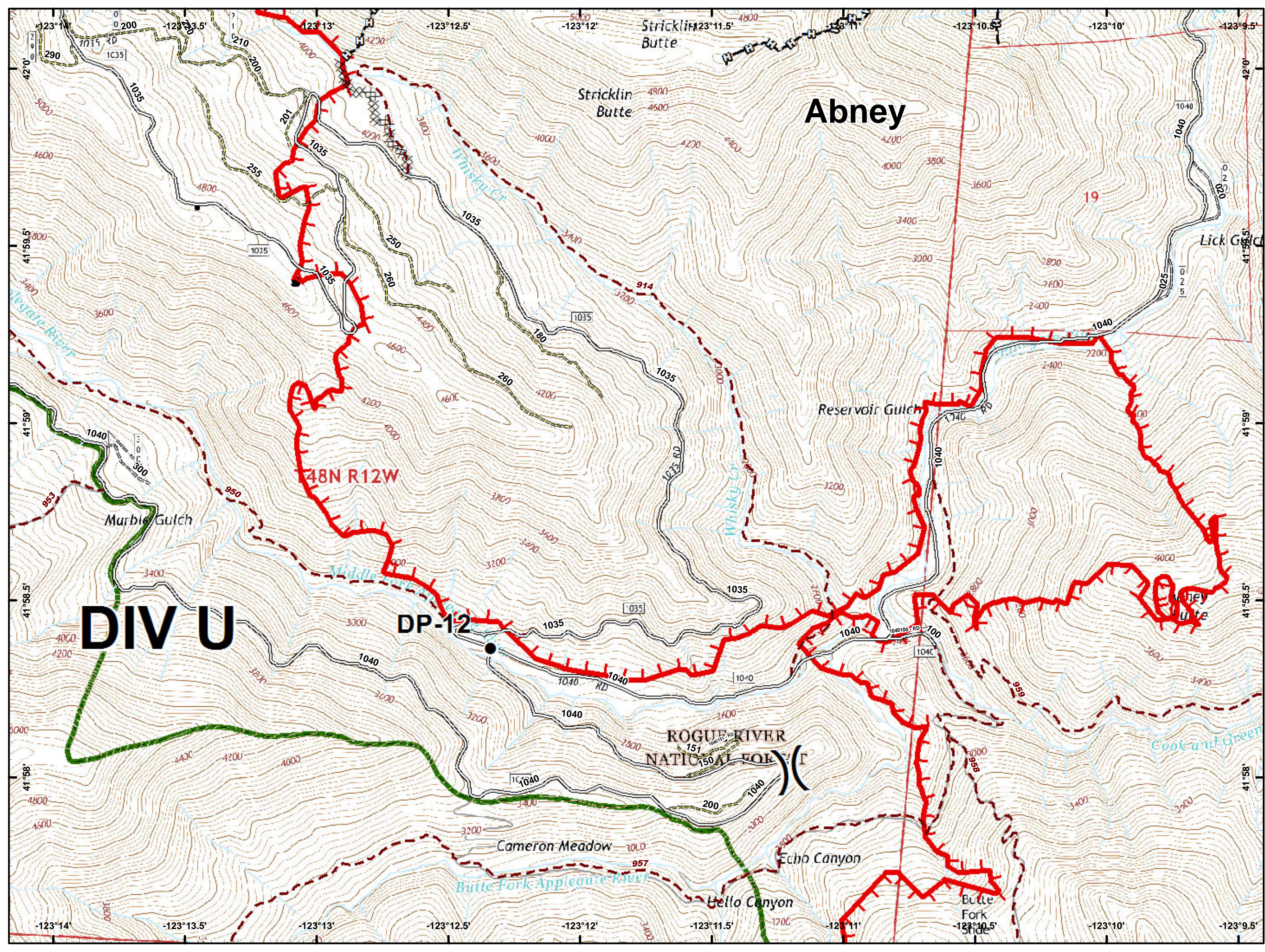
Abney

DIV U

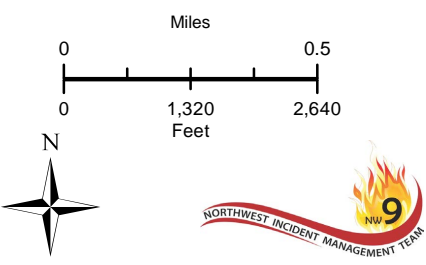
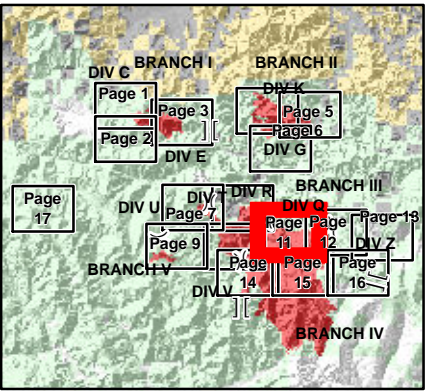
48N R12W

DP-12

ROGUE RIVER
NATIONAL FOREST

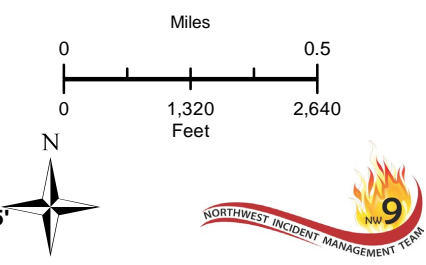
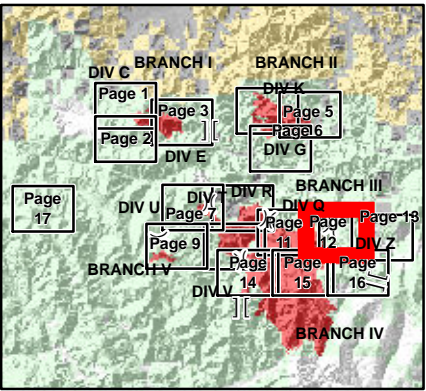
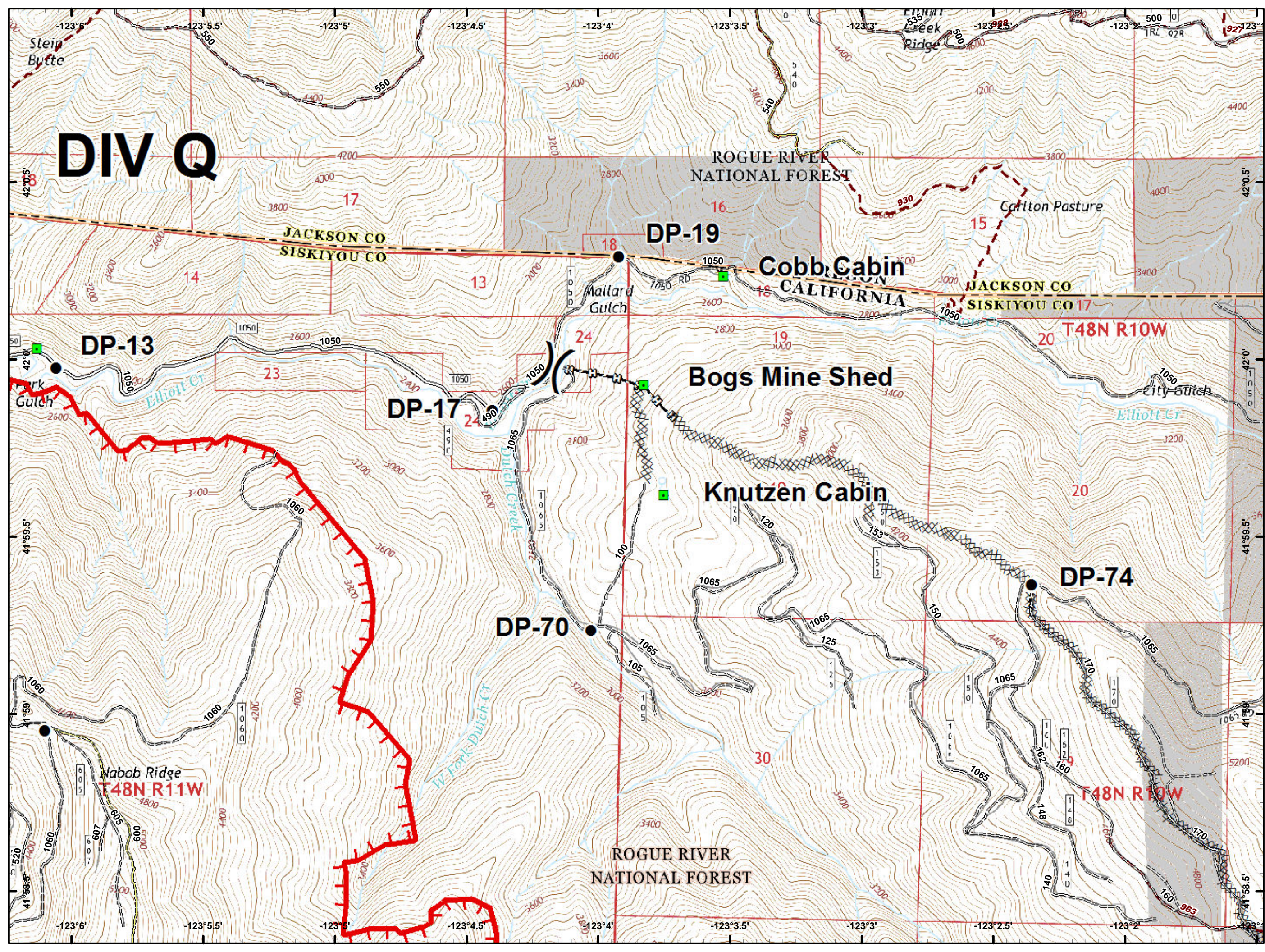


- Drop Point
- Landmark
- Ⓜ Water Source
- ⚠ Value at Risk
-) (Division Break
- 🔴 Uncontrolled Fire Edge
- ⚫ Completed Line
- ⚡ Completed Dozer Line
- 👉 Completed Hand Line
- 🛣 Road as Completed Line

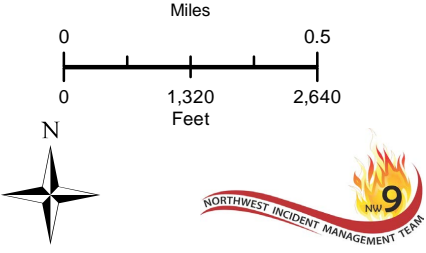
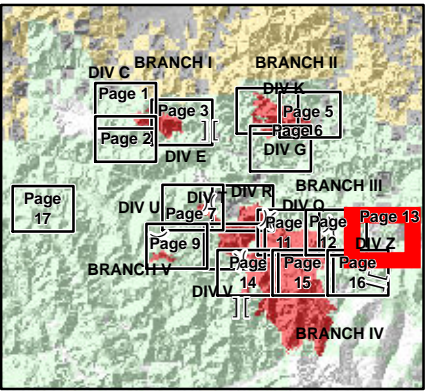
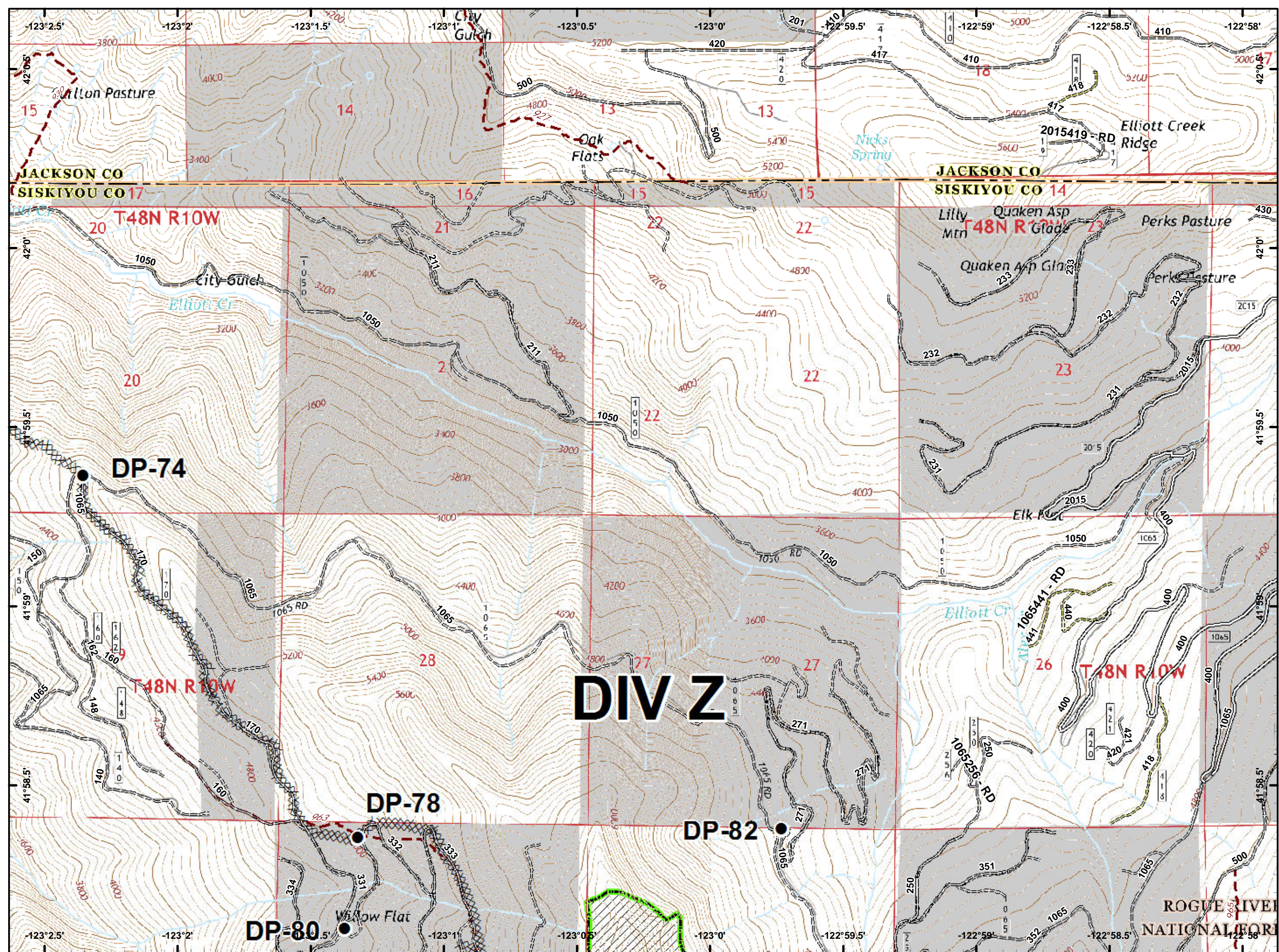









- Drop Point
- Landmark
-) (Division Break
- 🔴 Uncontrolled Fire Edge
- ⊗ Completed Dozer Line
- ⊕ Completed Hand Line
- ⊞ Private and State

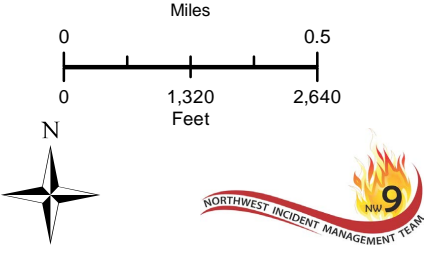
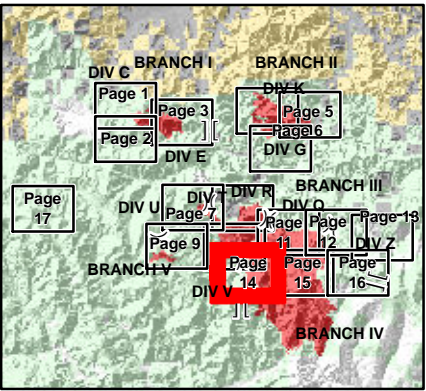
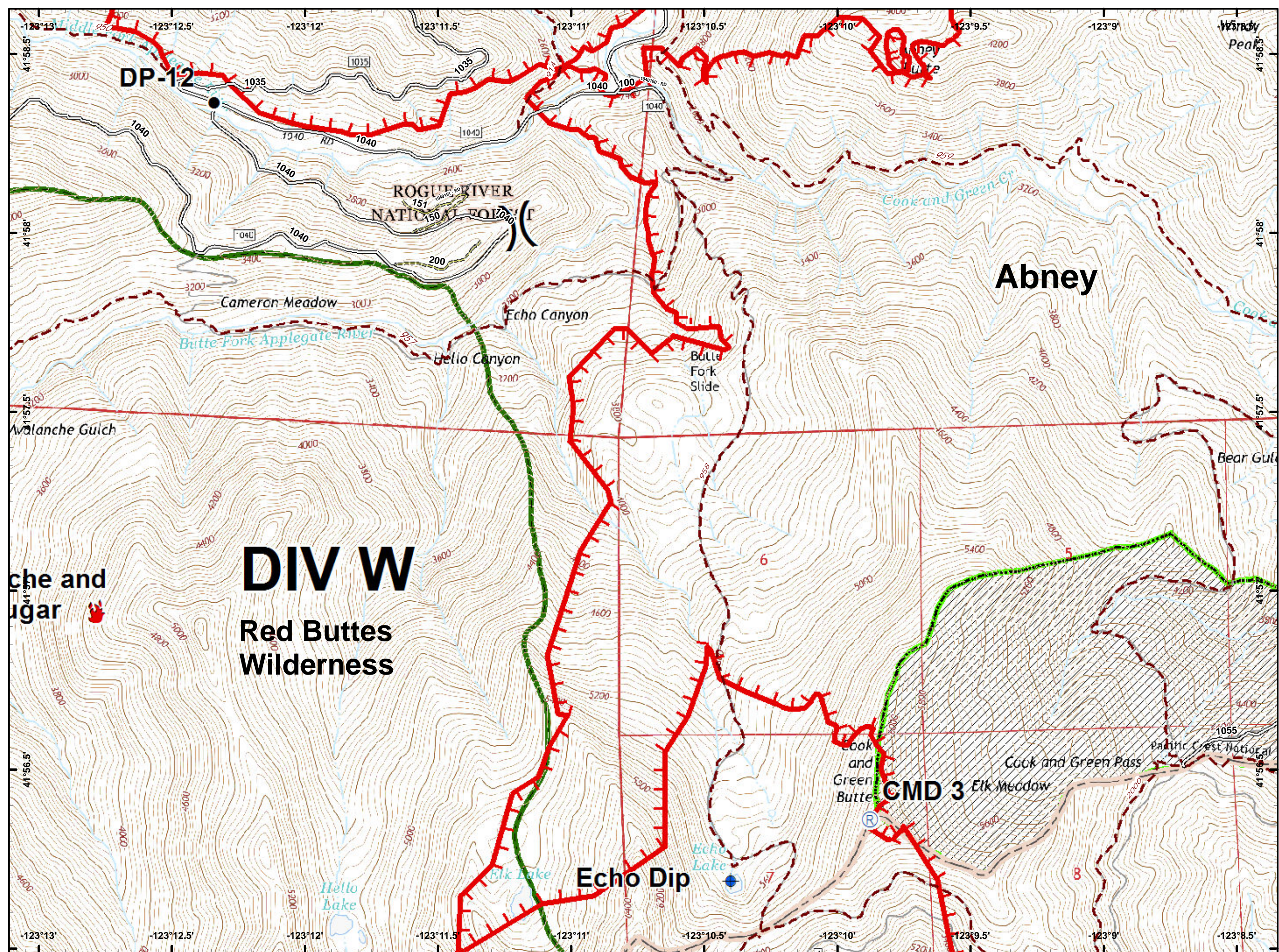
DIV Q



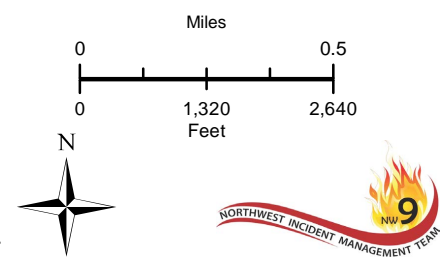
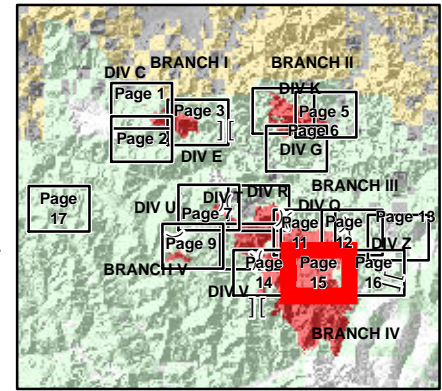
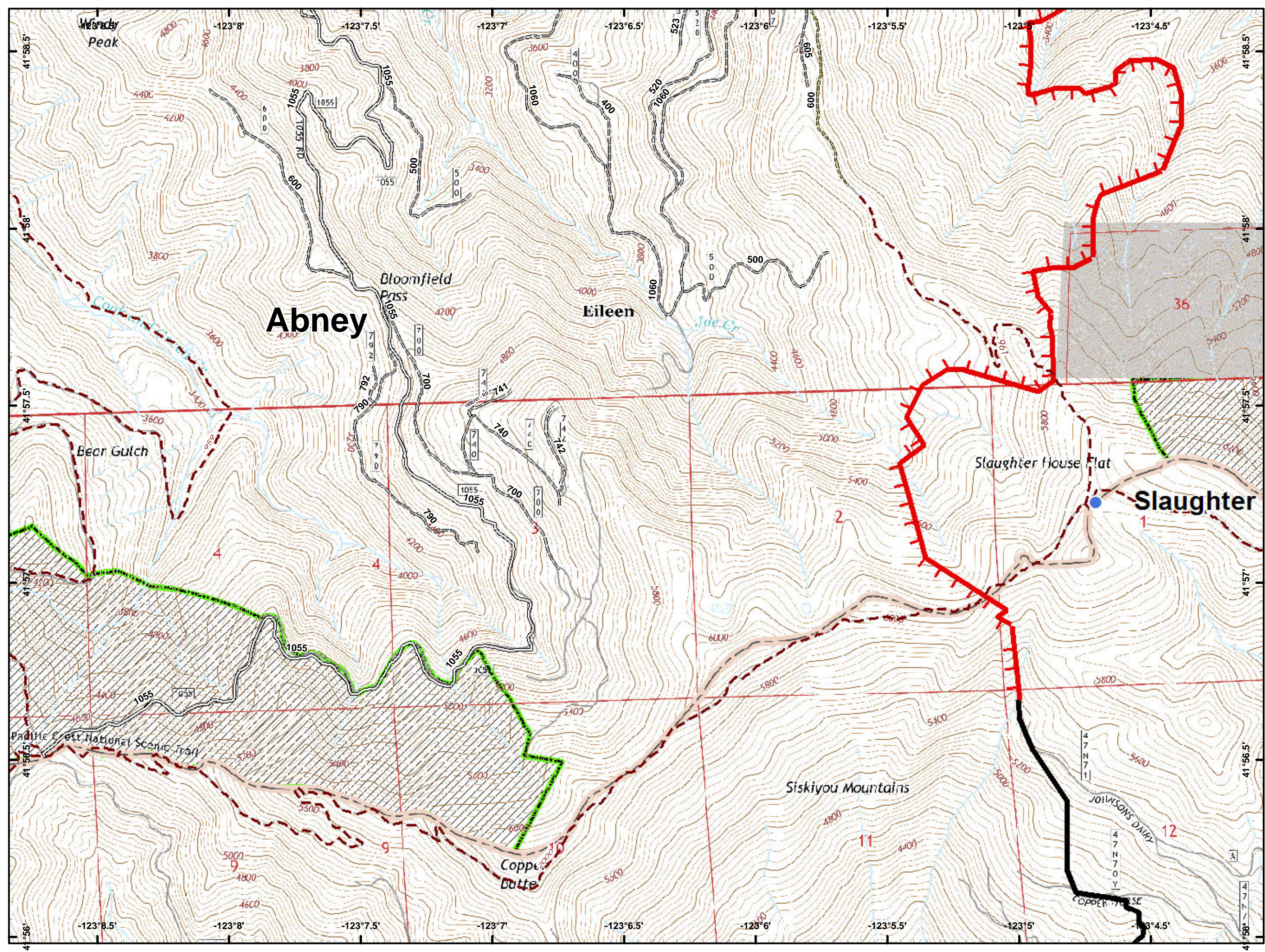
- Drop Point
- ▨ Completed Dozer Line
- Private and State



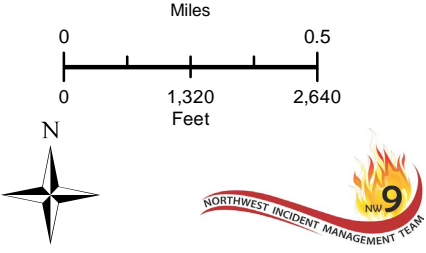
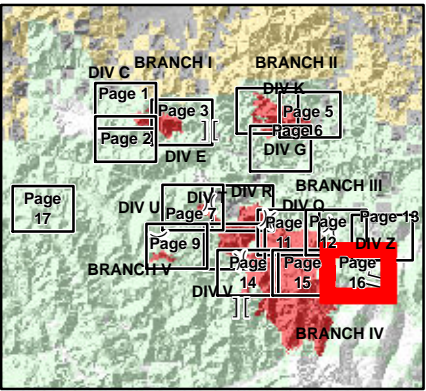
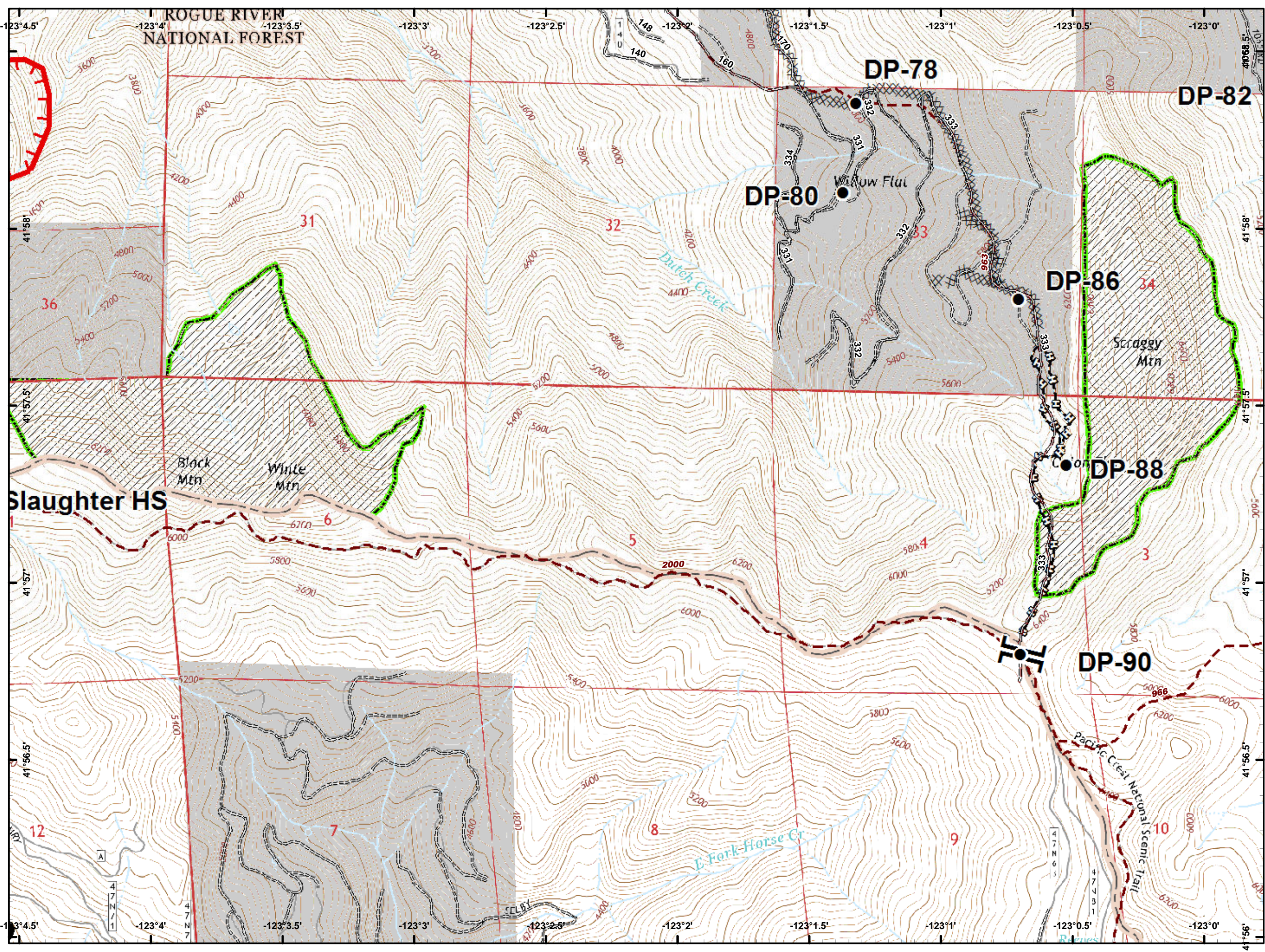
-  Dip Site
-  Drop Point
-  Fire Location
-  Repeater
-  Division Break
-  Uncontrolled Fire Edge
-  Wilderness






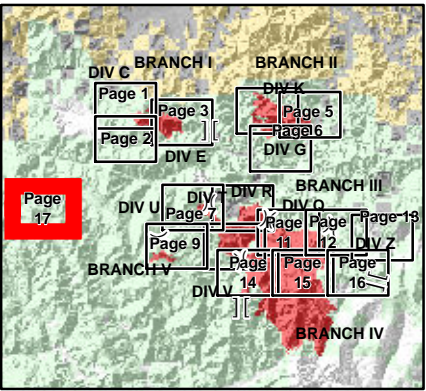
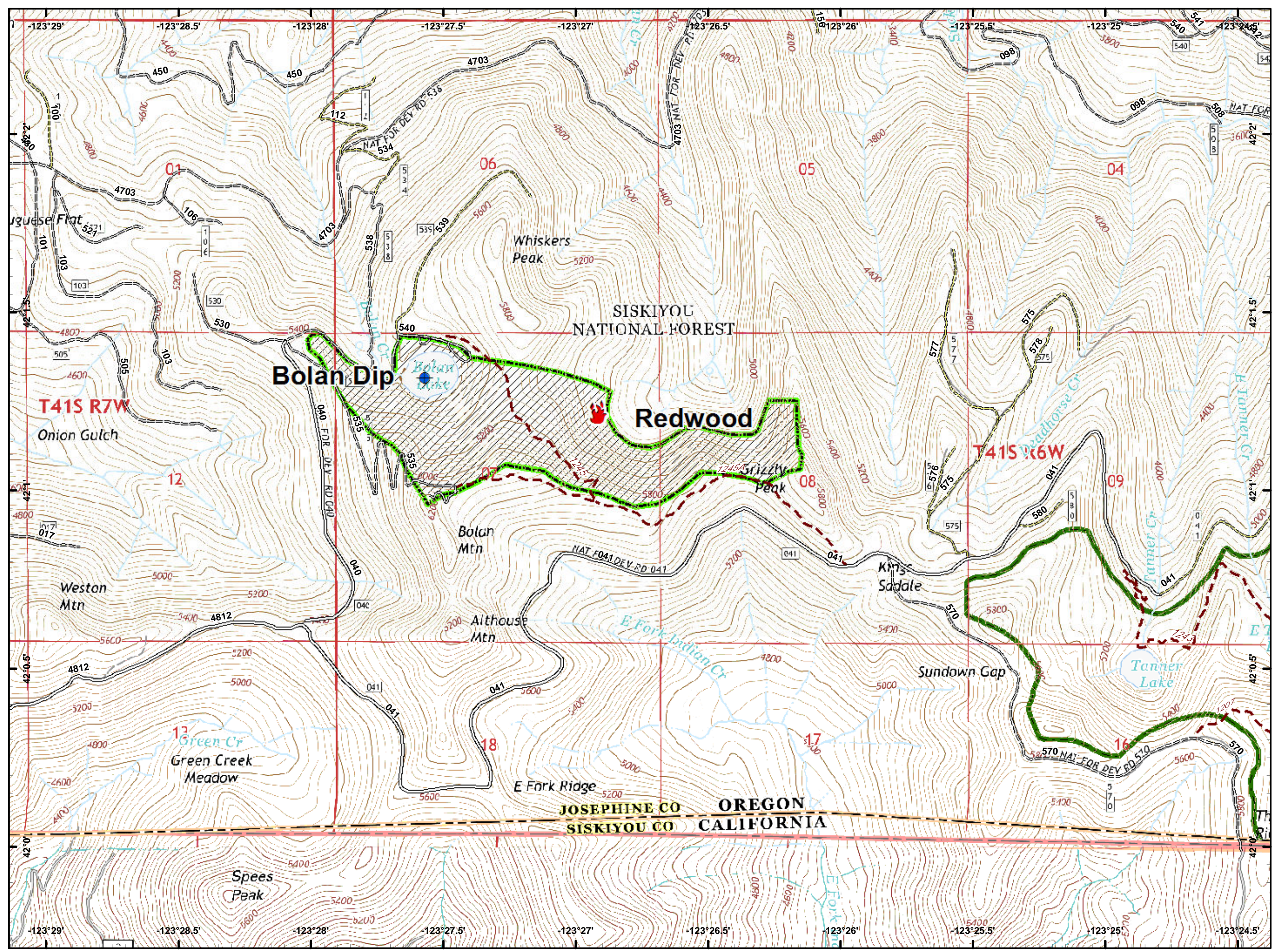
- Helispot
- 🔴 Uncontrolled Fire Edge
- 🟢 Completed Line





- Drop Point
-]] Branch Break
- Uncontrolled Fire Edge
- Completed Line
- Completed Dozer Line
- Completed Hand Line



-  Dip Site
-  Fire Location
-  Wilderness

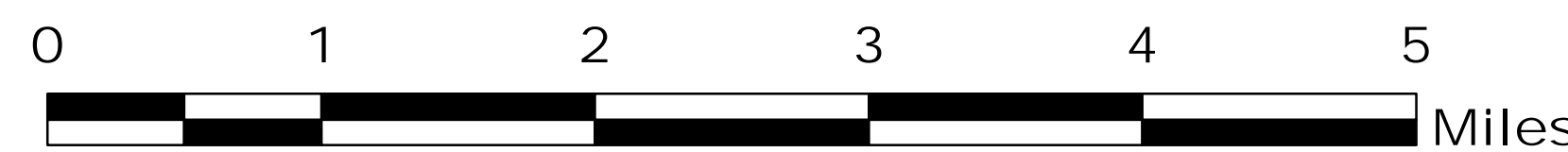
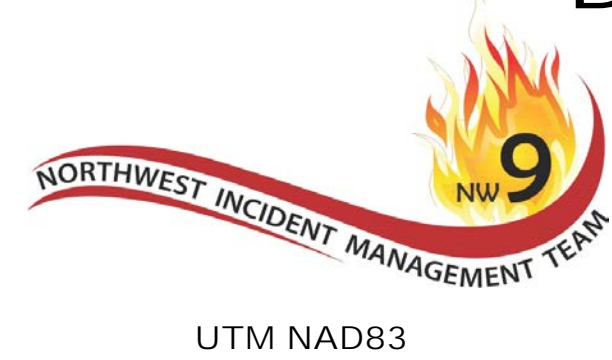


Miles 0 0.5
Feet 0 1,320 2,640



MILLER COMPLEX OR-RSF-000647

Dutch Creek Protocol Map 09/12/2017



MSC 9/11/2017 2037

Regular Vehicle Evac Times To Rogue Medical Center

- Under 1 Hour
- 1 to 2 Hours

Estimated Ground Evacuation Time

- 1 to 2 Hours
- 2 to 4 Hours
- 4 to 6 Hours
- More than 6 Hours

**No color implies that the estimated ground evacuation time is less than one hour.*

The intent is to encourage thoughtful decisions about the risks being transferred to firefighters and how to mitigate those risks. Models the shortest ground transport time in hours from any point within the continental United States to a hospital. The travel time estimate is from the moment a litter is lifted off the ground and travel begins, and does not include litter packaging, transport resource assembly, etc. The time estimates include walking speeds when traveling off-road adjusted for slope and vegetation type, and driving speeds based upon estimated speeds for the roads traveled.

The Estimated Ground Evacuation Time layer has been designed for strategic decision making and should not be used for tactical or operational decisions.

FeatureCategory	Label	Lat	Long	Comments
Helispot	H-15	42° 1.349' N	123° 13.786' W	Approved for Type 2 helicopters, requires dust abatement.
Helispot	H-50	42° 6.043' N	123° 19.252' W	Approved for Type 3 helicopters, requires dust abatement.

