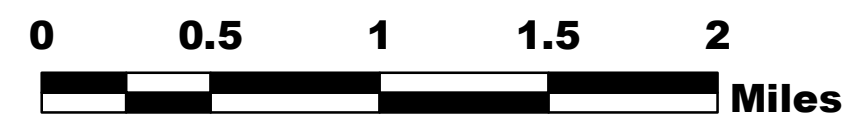
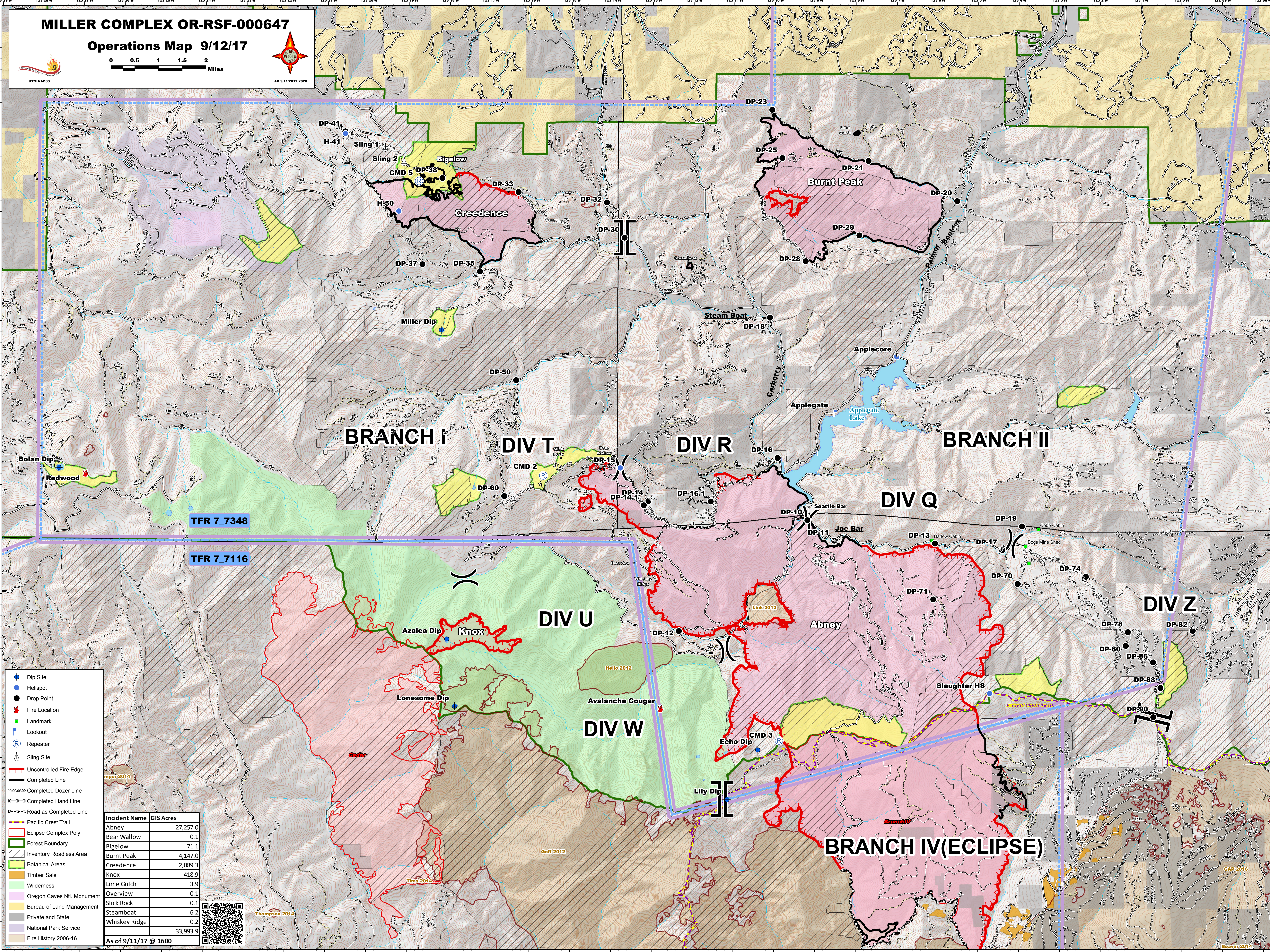


MILLER COMPLEX OR-RSF-000647

Operations Map 9/12/17



AD 9/11/2017 2020



- Dip Site
- Helipoint
- Drop Point
- Fire Location
- Landmark
- Lookout
- Repeater
- Sling Site
- Uncontrolled Fire Edge
- Completed Line
- Completed Dozer Line
- Completed Hand Line
- Road as Completed Line
- Pacific Crest Trail
- Eclipse Complex Poly
- Forest Boundary
- Inventory Roadless Area
- Botanical Areas
- Timber Sale
- Wilderness
- Oregon Caves Ntl. Monument
- Bureau of Land Management
- Private and State
- National Park Service
- Fire History 2006-16

Incident Name	GIS Acres
Abney	27,257.0
Bear Wallow	0.1
Bigelow	71.1
Burnt Peak	4,147.0
Creedence	2,089.3
Knox	418.9
Lime Gulch	3.9
Overview	0.1
Slick Rock	0.1
Steamboat	6.2
Whiskey Ridge	0.2
	33,993.9

As of 9/11/17 @ 1600



TFR 7_7348

TFR 7_7116

Thompson 2014

Boavara 2014

GAP 2016

Branch IV

Knutson Cabin

DP-88

DP-80

DP-74

DP-70

DP-19

DP-17

DP-13

DP-11

DP-10

DIV Z

BRANCH II

DIV Q

DIV R

DIV T

DIV U

DIV W

BRANCH IV(ECLIPSE)

BRANCH I

Creedence

Burnt Peak

Bigelow

Sling 1

H-41

DP-38

CMD 5

DP-33

H-50

DP-37

DP-35

DP-32

DP-30

DP-25

DP-21

DP-29

DP-28

DP-18

DP-16

DP-15

DP-14

DP-14.1

DP-16.1

DP-10

DP-11

DP-13

DP-17

DP-70

DP-74

DP-71

DP-78

DP-82

DP-86

DP-88

DP-90

DP-90

DP-90

DP-90

DP-90

DP-90

DP-90

DP-90

DP-90

DP-90

DP-90

DP-90

DP-90