

# MILLER COMPLEX OR-RSF-000647

Public Information Map 9/12

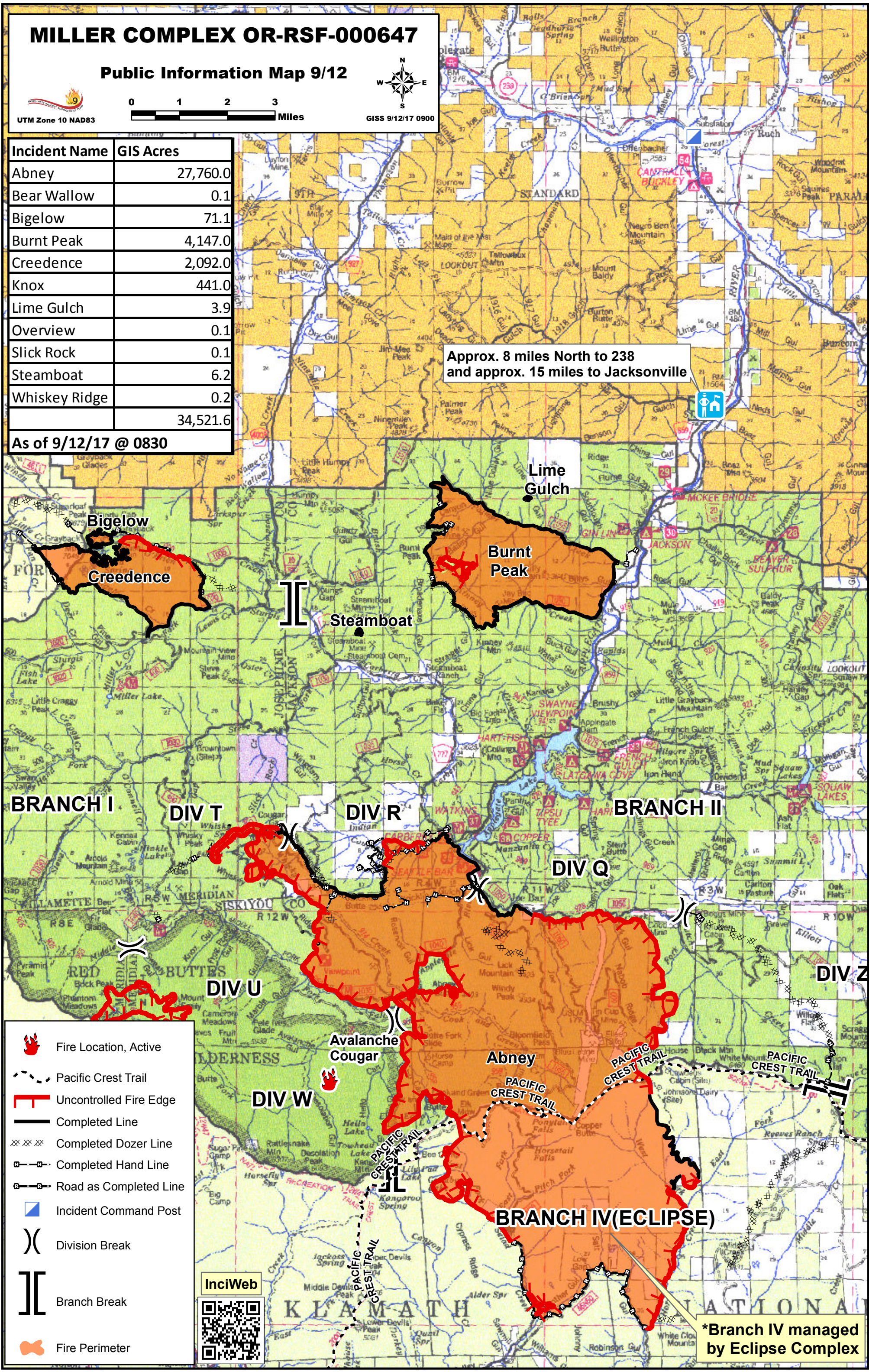


UTM Zone 10 NAD83



Incident Name	GIS Acres
Abney	27,760.0
Bear Wallow	0.1
Bigelow	71.1
Burnt Peak	4,147.0
Credence	2,092.0
Knox	441.0
Lime Gulch	3.9
Overview	0.1
Slick Rock	0.1
Steamboat	6.2
Whiskey Ridge	0.2
	34,521.6

As of 9/12/17 @ 0830



Approx. 8 miles North to 238 and approx. 15 miles to Jacksonville

- Fire Location, Active
- Pacific Crest Trail
- Uncontrolled Fire Edge
- Completed Line
- Completed Dozer Line
- Completed Hand Line
- Road as Completed Line
- Incident Command Post
- Division Break
- Branch Break
- Fire Perimeter

InciWeb

\*Branch IV managed by Eclipse Complex