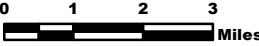


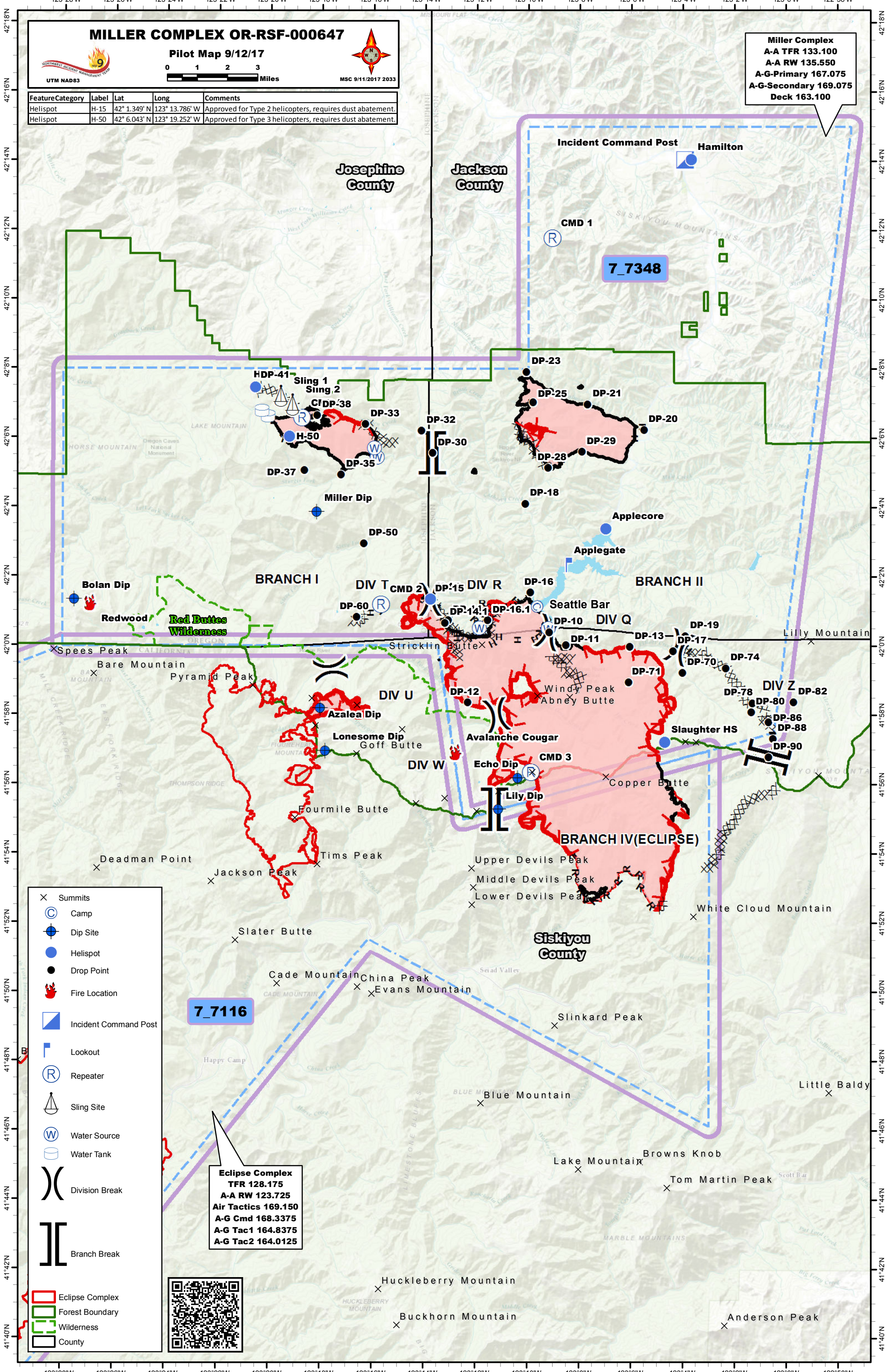
MILLER COMPLEX OR-RSF-000647

Pilot Map 9/12/17



Feature Category	Label	Lat	Long	Comments
Helispot	H-15	42° 1.349' N	123° 13.786' W	Approved for Type 2 helicopters, requires dust abatement.
Helispot	H-50	42° 6.043' N	123° 19.252' W	Approved for Type 3 helicopters, requires dust abatement.

Miller Complex
A-A TFR 133.100
A-A RW 135.550
A-G-Primary 167.075
A-G-Secondary 169.075
Deck 163.100



7_7348

7_7116

Eclipse Complex
TFR 128.175
A-A RW 123.725
Air Tactics 169.150
A-G Cmd 168.3375
A-G Tac1 164.8375
A-G Tac2 164.0125

- ✕ Summits
- ⊙ Camp
- Dip Site
- Helispot
- Drop Point
- 🔥 Fire Location
- 🏠 Incident Command Post
- 👁 Lookout
- Ⓡ Repeater
- 🚎 Sling Site
- 🚰 Water Source
- 🚰 Water Tank
- ⎓ Division Break
- ⎓ Branch Break
- 🔴 Eclipse Complex
- 🟢 Forest Boundary
- 🟢 Wilderness
- 🟡 County

