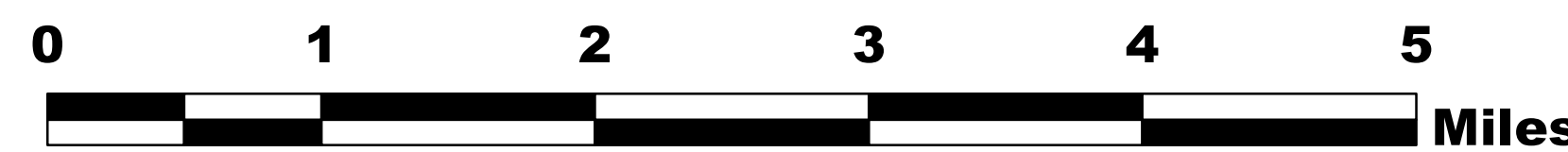


MILLER COMPLEX OR-RSF-000647

Dutch Creek Protocol Map 09/14/2017



AD 9/13/2017 2045

Regular Vehicle Evac Times To Rogue Medical Center

- Under 1 Hour
- 1 to 2 Hours

Estimated Ground Evacuation Time

- 1 to 2 Hours
- 2 to 4 Hours
- 4 to 6 Hours
- More than 6 Hours

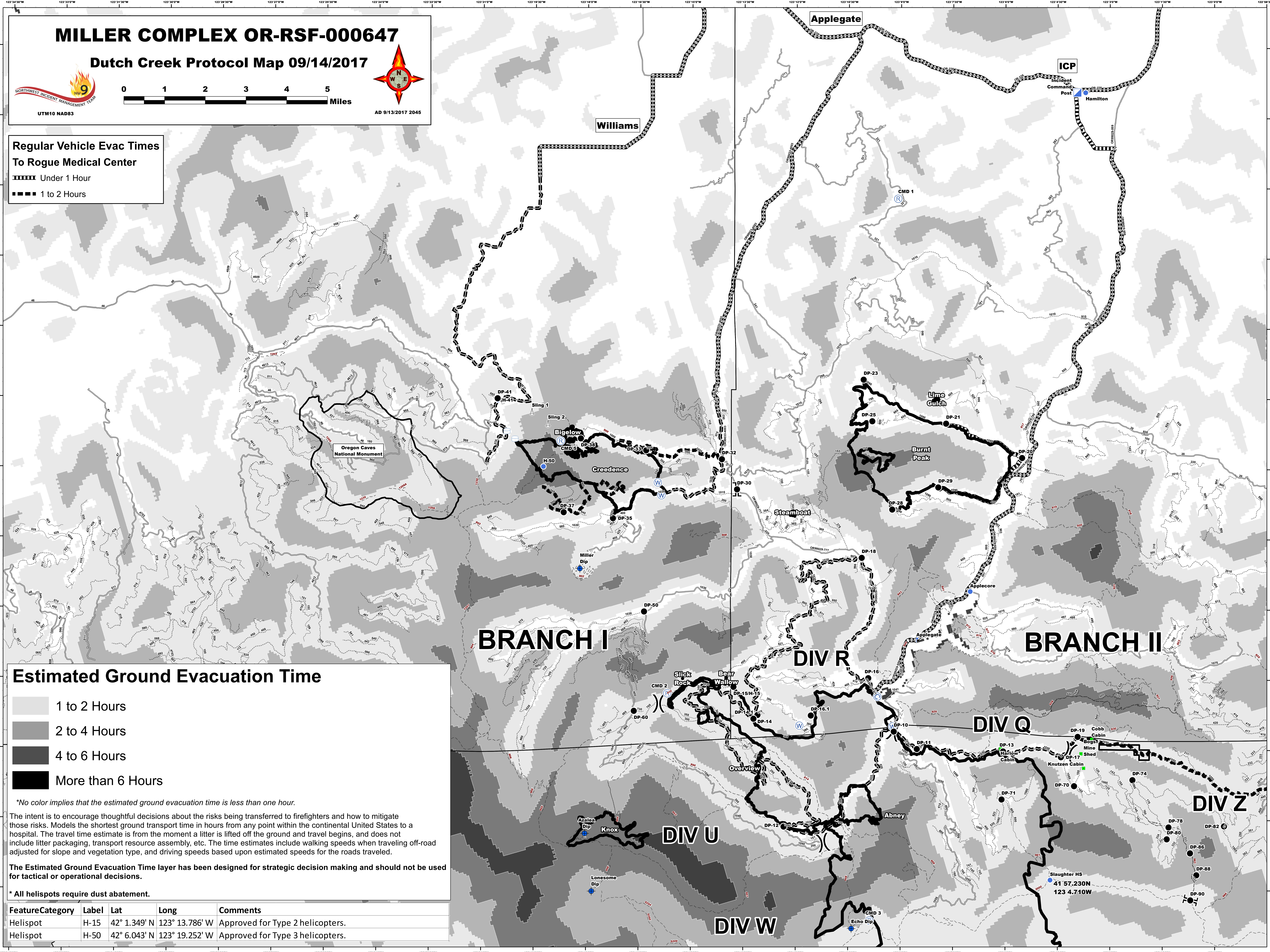
**No color implies that the estimated ground evacuation time is less than one hour.*

The intent is to encourage thoughtful decisions about the risks being transferred to firefighters and how to mitigate those risks. Models the shortest ground transport time in hours from any point within the continental United States to a hospital. The travel time estimate is from the moment a litter is lifted off the ground and travel begins, and does not include litter packaging, transport resource assembly, etc. The time estimates include walking speeds when traveling off-road adjusted for slope and vegetation type, and driving speeds based upon estimated speeds for the roads traveled.

The Estimated Ground Evacuation Time layer has been designed for strategic decision making and should not be used for tactical or operational decisions.

* All helispots require dust abatement.

FeatureCategory	Label	Lat	Long	Comments
Helispot	H-15	42° 1.349' N	123° 13.786' W	Approved for Type 2 helicopters.
Helispot	H-50	42° 6.043' N	123° 19.252' W	Approved for Type 3 helicopters.



BRANCH I

BRANCH II

DIV R

DIV Q

DIV Z

DIV U

DIV W

Slaughter HS
41 57.230N
123 4.710W