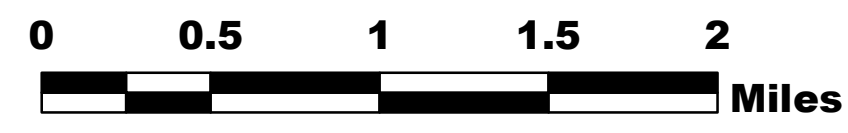


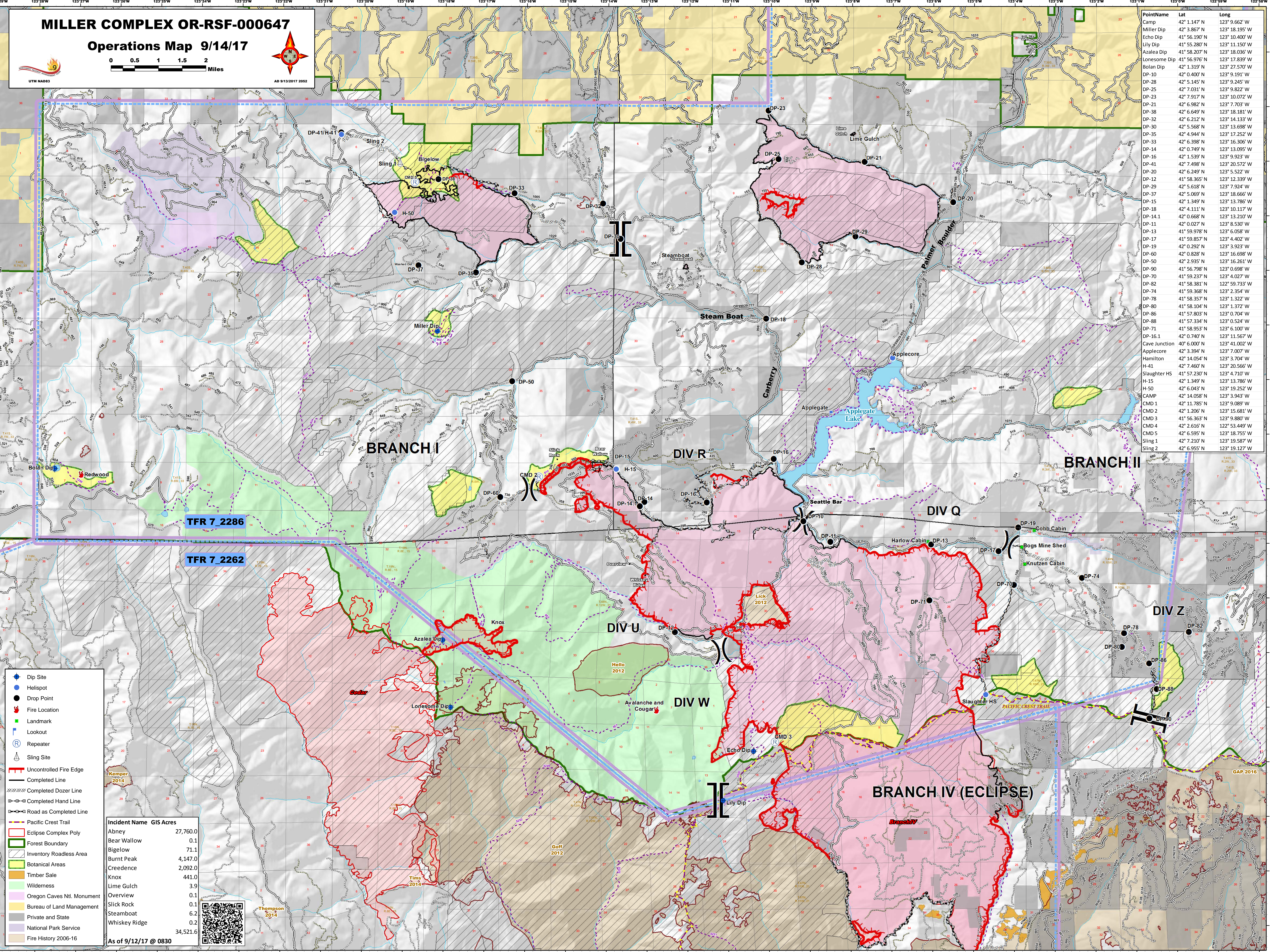
# MILLER COMPLEX OR-RSF-000647

## Operations Map 9/14/17



AD 9/13/2017 2052

PointName	Lat	Long
Camp	42° 1.147' N	123° 9.662' W
Miller Dip	42° 3.867' N	123° 18.195' W
Echo Dip	41° 56.190' N	123° 10.400' W
Lily Dip	41° 55.280' N	123° 11.150' W
Azalea Dip	41° 58.207' N	123° 18.036' W
Lonesome Dip	41° 56.976' N	123° 17.839' W
Bolan Dip	42° 1.319' N	123° 27.570' W
DP-10	42° 0.400' N	123° 9.191' W
DP-28	42° 5.145' N	123° 9.245' W
DP-25	42° 7.031' N	123° 9.822' W
DP-23	42° 7.917' N	123° 10.072' W
DP-38	42° 6.649' N	123° 18.181' W
DP-32	42° 6.212' N	123° 14.133' W
DP-30	42° 5.568' N	123° 13.698' W
DP-35	42° 4.944' N	123° 17.252' W
DP-33	42° 6.398' N	123° 16.306' W
DP-14	42° 0.749' N	123° 13.095' W
DP-16	42° 1.539' N	123° 9.923' W
DP-41	42° 7.498' N	123° 20.572' W
DP-20	42° 6.249' N	123° 5.522' W
DP-12	41° 58.365' N	123° 12.339' W
DP-29	42° 5.618' N	123° 7.924' W
DP-37	42° 5.069' N	123° 18.666' W
DP-15	42° 1.349' N	123° 13.786' W
DP-18	42° 4.111' N	123° 10.117' W
DP-14.1	42° 0.668' N	123° 13.210' W
DP-11	42° 0.027' N	123° 8.530' W
DP-13	41° 59.978' N	123° 4.058' W
DP-17	41° 59.857' N	123° 4.402' W
DP-19	42° 0.292' N	123° 3.923' W
DP-60	42° 0.828' N	123° 16.698' W
DP-50	42° 2.935' N	123° 16.261' W
DP-90	41° 56.798' N	123° 0.698' W
DP-70	41° 59.237' N	123° 4.027' W
DP-82	41° 58.381' N	122° 59.733' W
DP-74	41° 59.368' N	123° 2.354' W
DP-78	41° 58.357' N	123° 1.322' W
DP-80	41° 58.104' N	123° 1.372' W
DP-86	41° 57.803' N	123° 0.704' W
DP-88	41° 57.334' N	123° 0.524' W
DP-71	41° 58.953' N	123° 6.100' W
DP-16.1	42° 0.740' N	123° 11.567' W
Cave Junction	40° 6.000' N	123° 41.002' W
Applecure	42° 3.394' N	123° 7.007' W
Hamilton	42° 14.054' N	123° 3.704' W
H-41	42° 7.460' N	123° 20.566' W
Slaughter HS	41° 57.230' N	123° 4.710' W
H-15	42° 1.349' N	123° 13.786' W
H-50	42° 6.043' N	123° 19.252' W
CAMP	42° 14.058' N	123° 3.943' W
CMD 1	42° 11.785' N	123° 9.089' W
CMD 2	41° 1.206' N	123° 15.681' W
CMD 3	41° 56.363' N	123° 9.880' W
CMD 4	42° 2.616' N	122° 53.449' W
CMD 5	42° 6.595' N	123° 18.755' W
Sling 1	42° 7.210' N	123° 19.587' W
Sling 2	42° 6.955' N	123° 19.127' W



- Dip Site
- Helispot
- Drop Point
- Fire Location
- Landmark
- Ⓜ Lookout
- Ⓜ Repeater
- Ⓜ Sling Site
- Uncontrolled Fire Edge
- Completed Line
- - - Completed Dozer Line
- - - Completed Hand Line
- - - Road as Completed Line
- Pacific Crest Trail
- Eclipse Complex Poly
- Forest Boundary
- Inventory Roadless Area
- Botanical Areas
- Timber Sale
- Wilderness
- Oregon Caves Ntl. Monument
- Bureau of Land Management
- Private and State
- National Park Service
- Fire History 2006-16

Incident Name	GIS Acres
Abney	27,760.0
Bear Wallow	0.1
Bigelow	71.1
Burnt Peak	4,147.0
Creedence	2,092.0
Knox	441.0
Lime Gulch	3.9
Overview	0.1
Slick Rock	0.1
Steamboat	6.2
Whiskey Ridge	0.2
<b>Total</b>	<b>34,521.6</b>

As of 9/12/17 @ 0830

