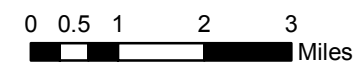


MILLER COMPLEX OR-RSF-000647

TRANSPORTATION MAP 9/14/17

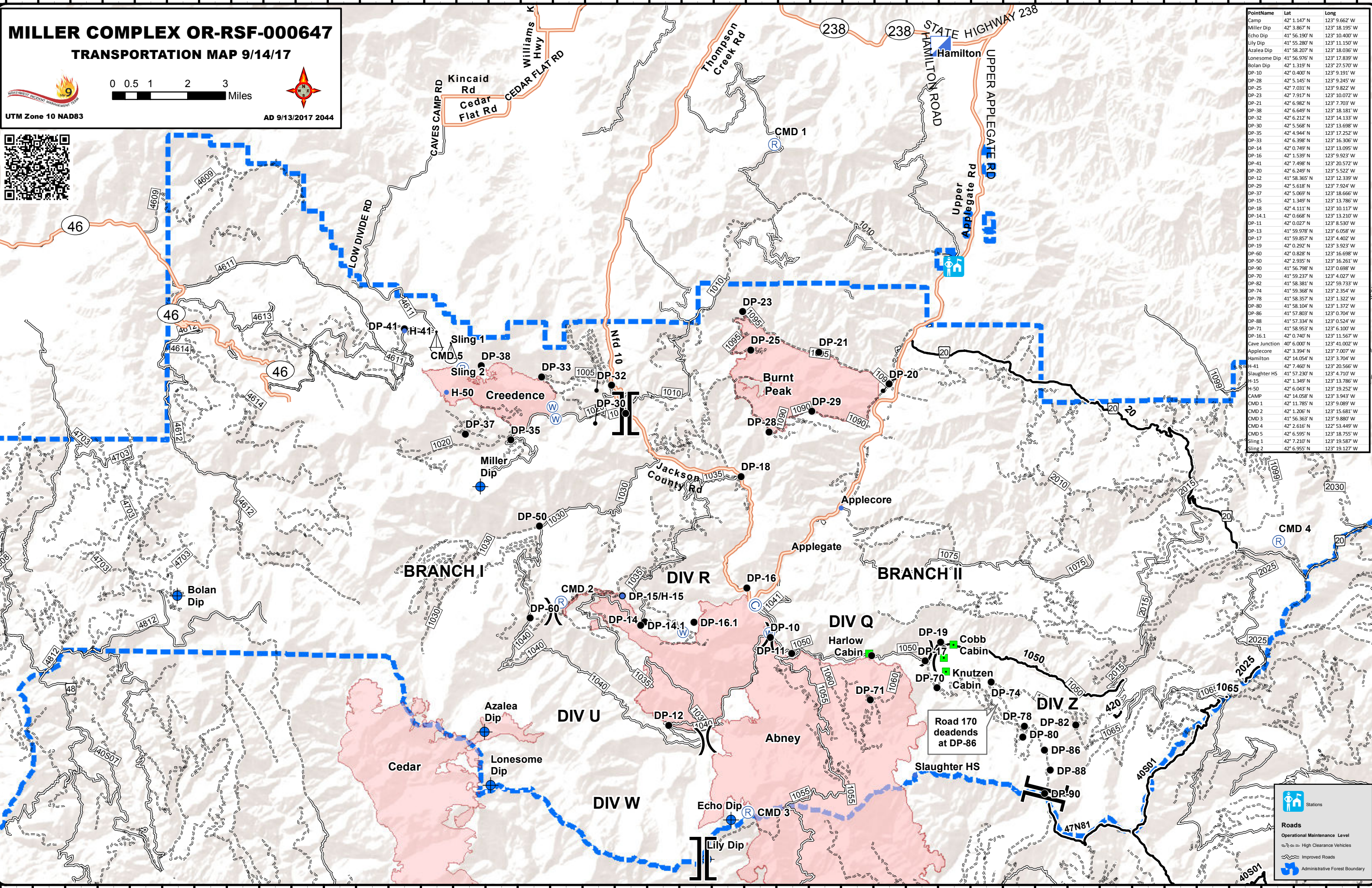


UTM Zone 10 NAD83

AD 9/13/2017 2044



PointName	Lat	Long
Camp	42° 1.147' N	123° 9.662' W
Miller Dip	42° 3.867' N	123° 18.195' W
Echo Dip	41° 56.190' N	123° 10.400' W
Lily Dip	41° 55.280' N	123° 11.150' W
Azalea Dip	41° 58.207' N	123° 18.036' W
Lonesome Dip	41° 56.976' N	123° 17.839' W
Bolan Dip	42° 1.319' N	123° 27.570' W
DP-10	42° 0.400' N	123° 9.191' W
DP-28	42° 5.145' N	123° 9.245' W
DP-25	42° 7.031' N	123° 9.822' W
DP-23	42° 7.917' N	123° 10.072' W
DP-21	42° 6.982' N	123° 7.703' W
DP-38	42° 6.649' N	123° 18.181' W
DP-32	42° 6.212' N	123° 14.133' W
DP-30	42° 5.568' N	123° 13.698' W
DP-35	42° 4.944' N	123° 17.252' W
DP-33	42° 6.398' N	123° 16.306' W
DP-14	42° 0.749' N	123° 13.095' W
DP-16	42° 1.539' N	123° 9.923' W
DP-41	42° 7.498' N	123° 20.572' W
DP-20	42° 6.249' N	123° 5.522' W
DP-12	41° 58.365' N	123° 12.339' W
DP-29	42° 5.618' N	123° 7.924' W
DP-37	42° 5.069' N	123° 18.666' W
DP-15	42° 1.349' N	123° 13.786' W
DP-18	42° 4.111' N	123° 10.117' W
DP-14.1	42° 0.668' N	123° 13.210' W
DP-11	42° 0.027' N	123° 8.530' W
DP-13	41° 59.978' N	123° 6.058' W
DP-17	41° 59.857' N	123° 4.402' W
DP-19	42° 0.292' N	123° 3.923' W
DP-60	42° 0.828' N	123° 16.698' W
DP-50	42° 2.935' N	123° 16.261' W
DP-90	41° 56.798' N	123° 0.698' W
DP-70	41° 59.237' N	123° 4.027' W
DP-82	41° 58.381' N	122° 59.733' W
DP-74	41° 59.368' N	123° 2.354' W
DP-78	41° 58.357' N	123° 1.322' W
DP-80	41° 58.104' N	123° 1.372' W
DP-86	41° 57.803' N	123° 0.704' W
DP-88	41° 57.334' N	123° 0.524' W
DP-71	41° 58.953' N	123° 6.100' W
DP-16.1	42° 0.740' N	123° 11.567' W
Cave Junction	40° 6.000' N	123° 41.002' W
Applecore	42° 3.394' N	123° 7.007' W
Hamilton	42° 14.054' N	123° 3.704' W
H-41	42° 7.460' N	123° 20.566' W
Slaughter HS	41° 57.230' N	123° 4.710' W
H-15	42° 1.349' N	123° 13.786' W
H-50	42° 6.043' N	123° 19.252' W
CAMP	42° 14.058' N	123° 3.943' W
CMD 1	42° 11.785' N	123° 9.089' W
CMD 2	42° 1.206' N	123° 15.681' W
CMD 3	41° 56.363' N	123° 9.880' W
CMD 4	42° 2.616' N	122° 53.449' W
CMD 5	42° 6.595' N	123° 18.755' W
Sling 1	42° 7.210' N	123° 19.587' W
Sling 2	42° 6.955' N	123° 19.127' W



Stations

Roads

- Operational Maintenance Level
- High Clearance Vehicles
- Improved Roads
- Administrative Forest Boundary

Road 170 deadends at DP-86