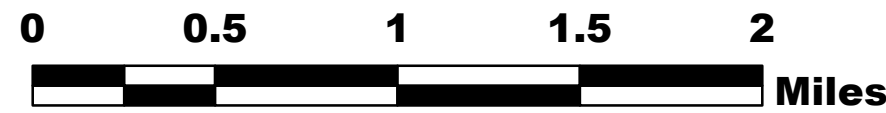


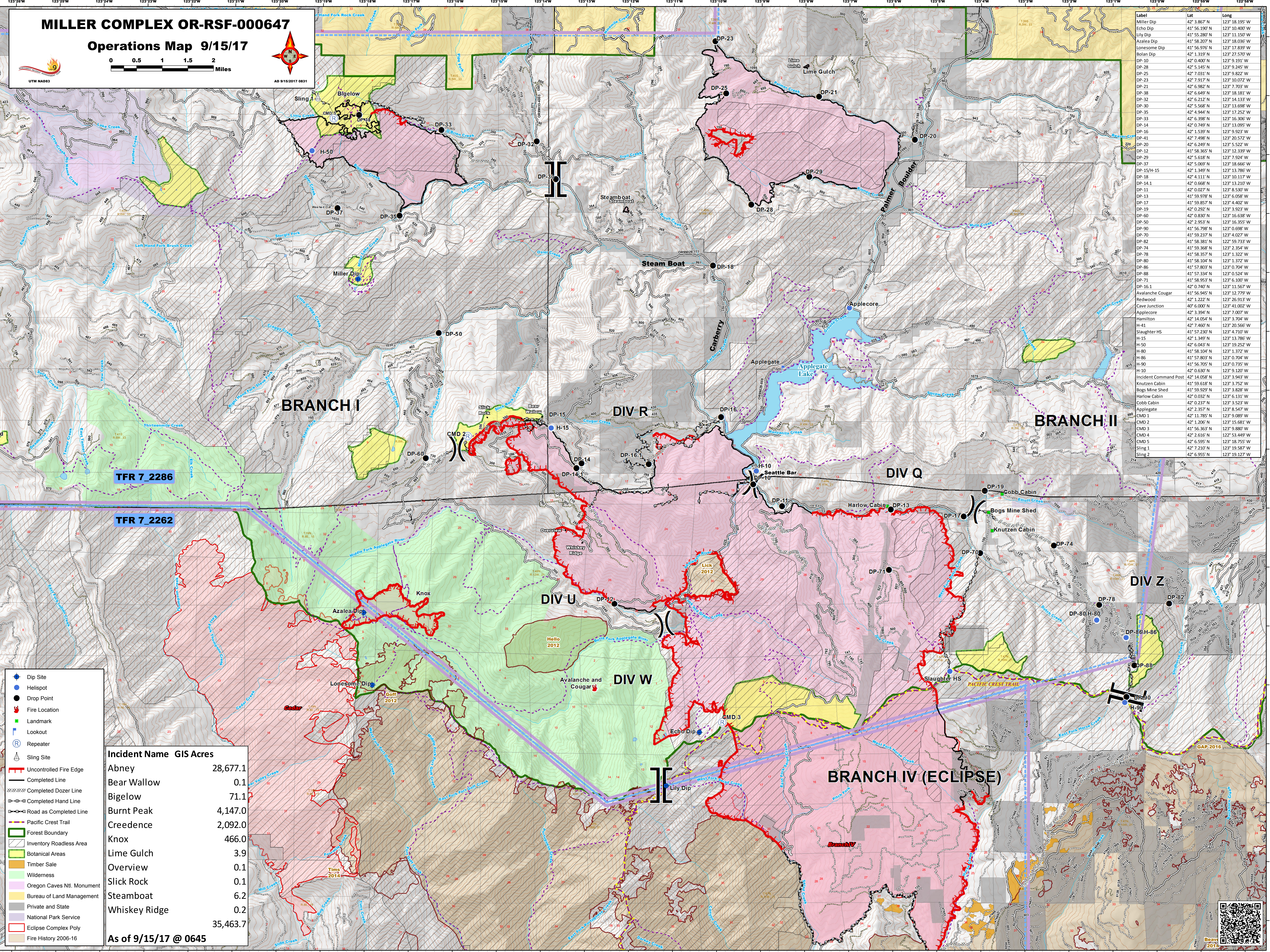
MILLER COMPLEX OR-RSF-000647

Operations Map 9/15/17



AD 9/15/2017 0831

Label	Lat	Long
Miller Dip	42° 3.867' N	123° 18.195' W
Echo Dip	41° 56.190' N	123° 10.400' W
Lily Dip	41° 56.207' N	123° 11.150' W
Azalea Dip	41° 56.207' N	123° 18.036' W
Lonesome Dip	41° 56.976' N	123° 17.839' W
Bolan Dip	42° 1.319' N	123° 27.570' W
DP-10	42° 0.400' N	123° 9.191' W
DP-28	42° 5.145' N	123° 9.245' W
DP-25	42° 7.031' N	123° 9.822' W
DP-23	42° 7.917' N	123° 10.072' W
DP-21	42° 6.982' N	123° 7.703' W
DP-38	42° 6.649' N	123° 18.181' W
DP-32	42° 6.212' N	123° 14.133' W
DP-30	42° 5.568' N	123° 13.698' W
DP-35	42° 4.944' N	123° 17.252' W
DP-33	42° 6.398' N	123° 16.306' W
DP-14	42° 0.749' N	123° 13.095' W
DP-16	42° 1.539' N	123° 9.923' W
DP-41	42° 7.496' N	123° 20.572' W
DP-20	42° 6.249' N	123° 5.522' W
DP-12	41° 58.365' N	123° 12.339' W
DP-29	42° 6.618' N	123° 7.924' W
DP-37	42° 5.069' N	123° 18.666' W
DP-15/H-15	42° 1.349' N	123° 13.786' W
DP-18	42° 4.111' N	123° 10.117' W
DP-14.1	42° 0.668' N	123° 13.210' W
DP-11	42° 0.027' N	123° 8.530' W
DP-13	41° 59.978' N	123° 6.058' W
DP-17	41° 59.857' N	123° 4.402' W
DP-19	42° 0.292' N	123° 3.923' W
DP-60	42° 0.830' N	123° 6.524' W
DP-50	42° 2.953' N	123° 16.355' W
DP-90	41° 56.798' N	123° 0.698' W
DP-70	41° 59.237' N	123° 4.027' W
DP-82	41° 58.381' N	122° 59.733' W
DP-74	41° 59.368' N	123° 2.354' W
DP-78	41° 58.357' N	123° 1.322' W
DP-80	41° 58.104' N	123° 1.372' W
DP-86	41° 57.803' N	123° 0.704' W
DP-88	41° 57.334' N	123° 6.524' W
DP-71	41° 58.953' N	123° 6.100' W
DP-16.1	42° 0.740' N	123° 11.567' W
Avalanche Cougar	41° 56.945' N	123° 12.779' W
Redwood	42° 1.222' N	123° 26.913' W
Cave Junction	40° 6.000' N	123° 41.002' W
Applecore	42° 3.394' N	123° 7.007' W
Hamilton	42° 14.054' N	123° 3.704' W
H-41	42° 7.460' N	123° 20.566' W
Slaughter HS	41° 57.230' N	123° 7.210' W
H-15	42° 1.349' N	123° 13.786' W
H-50	42° 6.043' N	123° 19.252' W
H-80	41° 58.104' N	123° 1.372' W
H-86	41° 57.803' N	123° 0.704' W
H-90	41° 56.705' N	123° 0.735' W
H-10	42° 0.630' N	123° 9.120' W
Incident Command Post	42° 14.058' N	123° 3.943' W
Knutzen Cabin	41° 59.618' N	123° 3.752' W
Bogs Mine Shed	41° 59.929' N	123° 6.028' W
Harlow Cabin	42° 0.027' N	123° 6.131' W
Cobb Cabin	42° 0.237' N	123° 3.523' W
Applegate	42° 2.357' N	123° 8.547' W
CMD 1	42° 11.785' N	123° 9.089' W
CMD 2	42° 1.206' N	123° 15.681' W
CMD 3	41° 56.363' N	123° 9.880' W
CMD 4	42° 2.616' N	122° 53.449' W
CMD 5	42° 6.595' N	123° 18.755' W
Sling 1	42° 7.210' N	123° 19.587' W
Sling 2	42° 6.955' N	123° 19.127' W



- Dip Site
- Helipoint
- Drop Point
- Fire Location
- Landmark
- Lookout
- Repeater
- Sling Site
- Uncontrolled Fire Edge
- Completed Line
- Completed Dozer Line
- Completed Hand Line
- Road as Completed Line
- Pacific Crest Trail
- Forest Boundary
- Inventory Roadless Area
- Botanical Areas
- Timber Sale
- Wilderness
- Oregon Caves Ntl. Monument
- Bureau of Land Management
- Private and State
- National Park Service
- Eclipse Complex Poly
- Fire History 2006-16

Incident Name	GIS Acres
Abney	28,677.1
Bear Wallow	0.1
Bigelow	71.1
Burnt Peak	4,147.0
Creedence	2,092.0
Knox	466.0
Lime Gulch	3.9
Overview	0.1
Slick Rock	0.1
Steamboat	6.2
Whiskey Ridge	0.2
Total	35,463.7

As of 9/15/17 @ 0645

