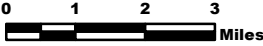


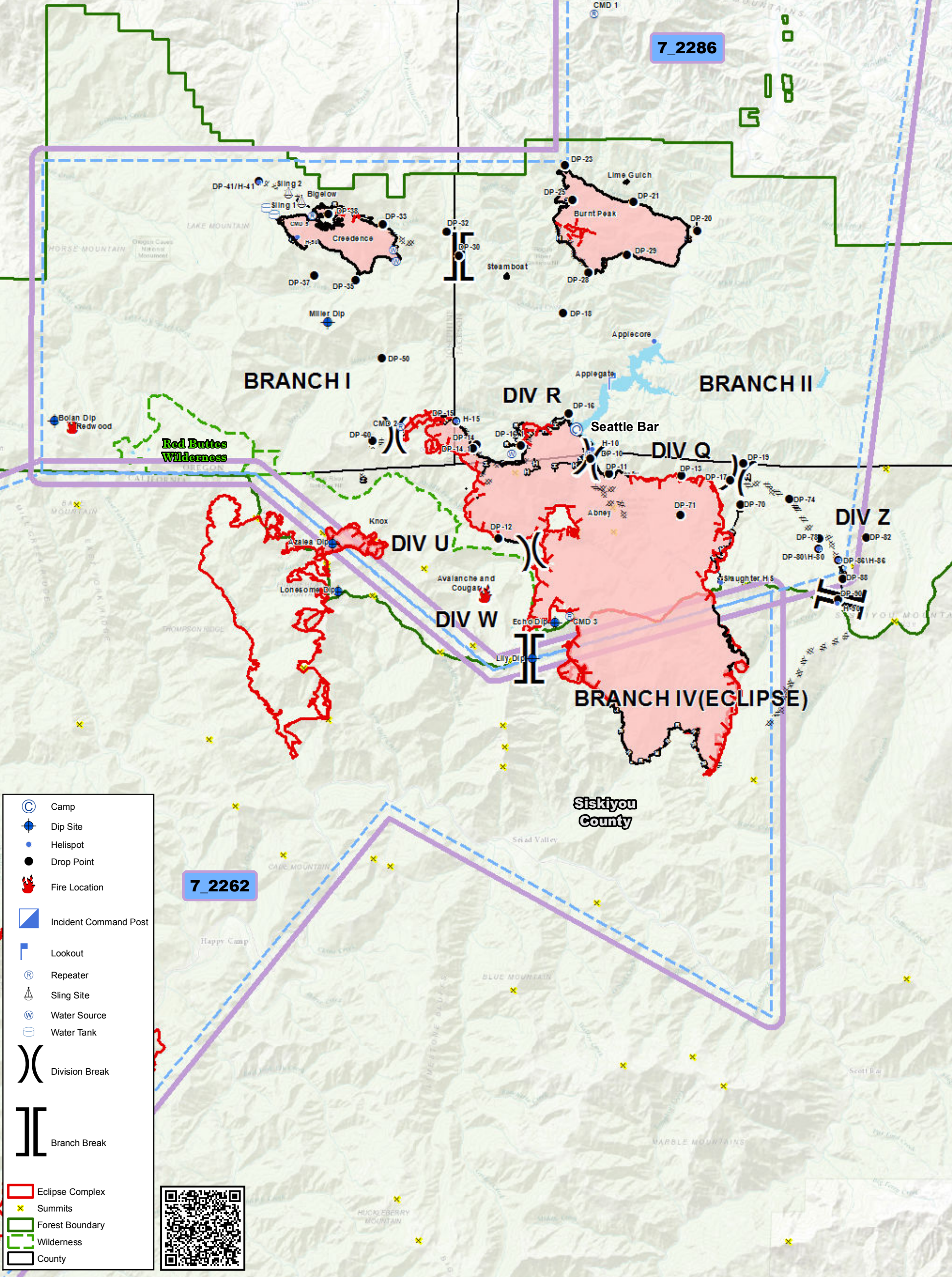
# MILLER COMPLEX OR-RSF-000647

Pilot Map 9/15/17



All helispots require dust abatement

FeatureCategory	Label	Lat	Long	Comments
Helispot	Applecore	42° 3.394' N	123° 7.007' W	
Helispot	Hamilton	42° 14.054' N	123° 3.704' W	
Helispot	H-41	42° 7.460' N	123° 20.566' W	
Helispot	Slaughter HS	41° 57.230' N	123° 4.710' W	
Helispot	H-15	42° 1.349' N	123° 13.786' W	Approved for Type 2 helicopters
Helispot	H-50	42° 6.043' N	123° 19.252' W	Approved for Type 3 helicopters
Helispot	H-80	41° 58.104' N	123° 1.372' W	Type III
Helispot	H-86	41° 57.803' N	123° 0.704' W	West Approach only. Full performance landing.
Helispot	H-90	41° 56.705' N	123° 0.735' W	West Approach+South Approach
Helispot	H-10	42° 0.630' N	123° 9.120' W	Type 2



7\_2286

7\_2262

- Camp
- Dip Site
- Helispot
- Drop Point
- Fire Location
- Incident Command Post
- Lookout
- Repeater
- Sling Site
- Water Source
- Water Tank
- Division Break
- Branch Break
- Eclipse Complex
- Summits
- Forest Boundary
- Wilderness
- County

