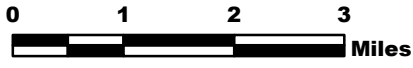


MILLER COMPLEX OR-RSF-000647

Public Information Map 9/18



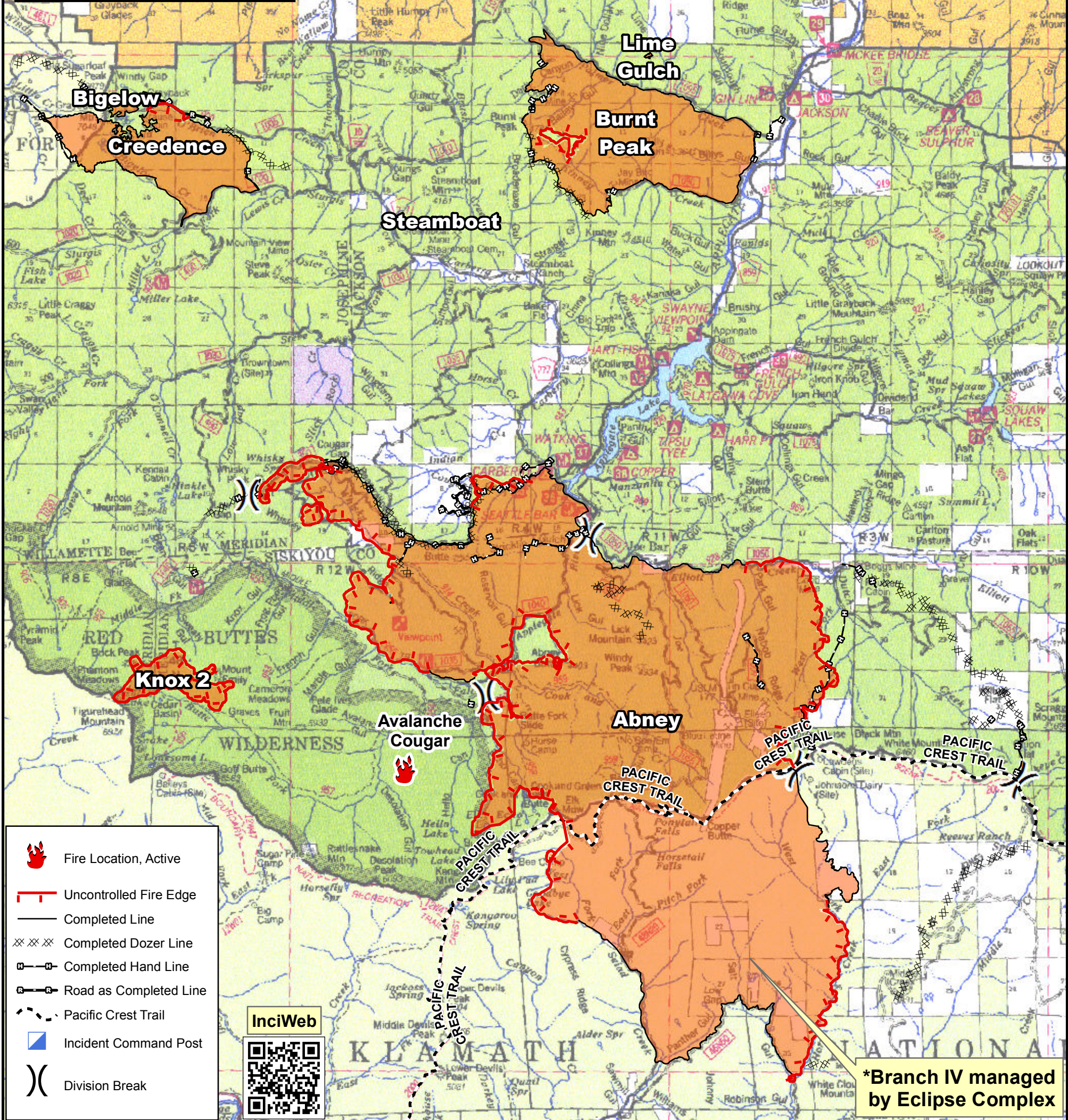
UTM Zone 10 NAD83



Incident Name	GIS Acres
Abney	29,019.9
Bear Wallow	0.1
Bigelow	71.1
Burnt Peak	4,147.0
Creedence	2,092.0
Knox	470.2
Lime Gulch	3.9
Overview	0.1
Slick Rock	0.1
Steamboat	6.2
Whiskey Ridge	0.2
	35,810.7

As of 9/16/17 @ 0645

Approx. 8 miles North to 238
and approx. 15 miles to Jacksonville



- Fire Location, Active
- Uncontrolled Fire Edge
- Completed Line
- Completed Dozer Line
- Completed Hand Line
- Road as Completed Line
- Pacific Crest Trail
- Incident Command Post
- Division Break



*Branch IV managed by Eclipse Complex