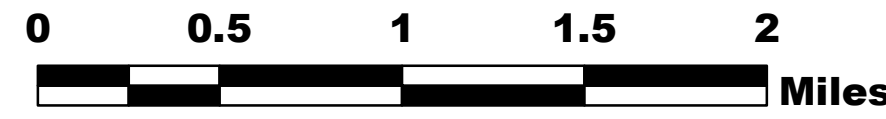
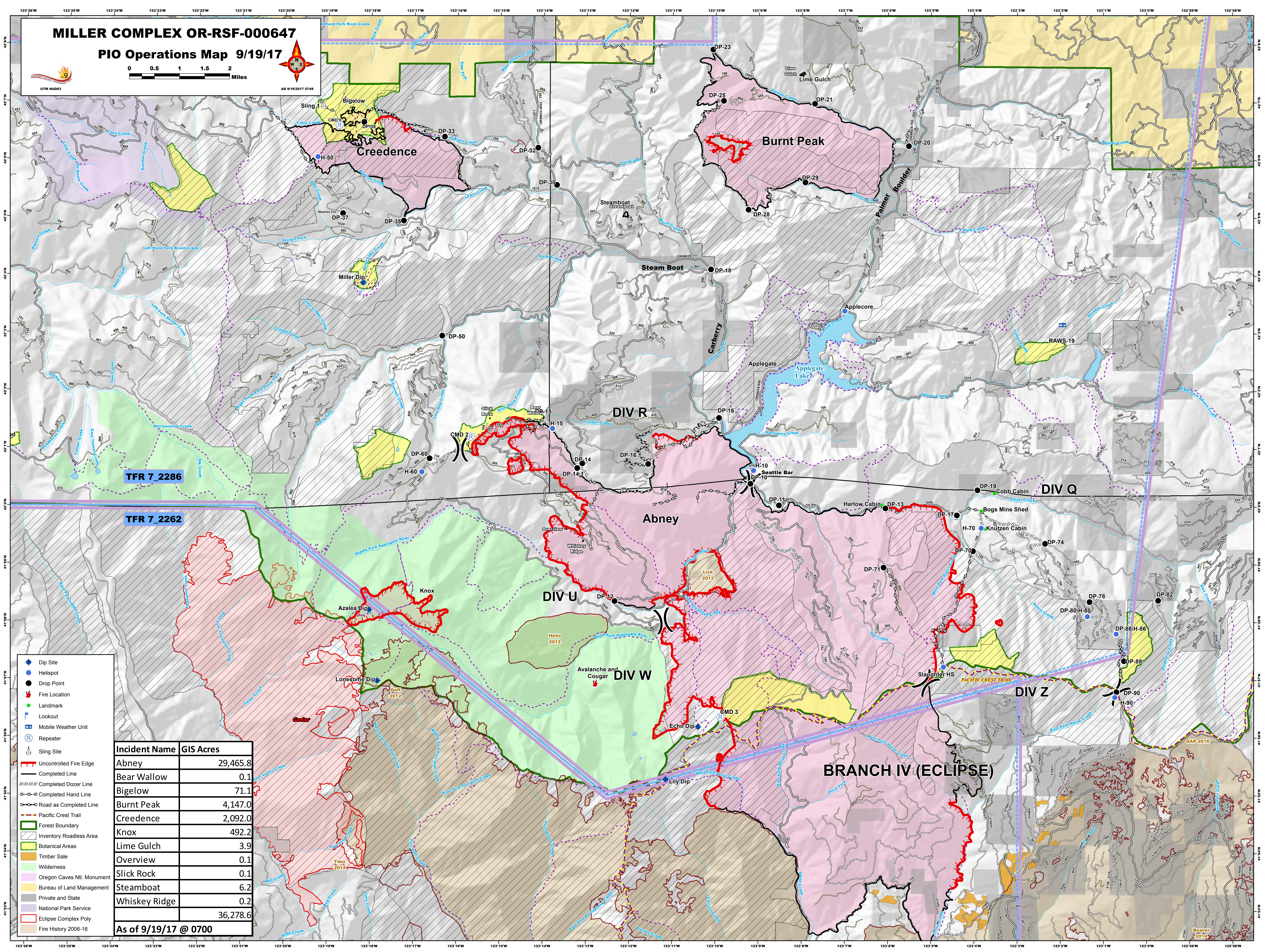


MILLER COMPLEX OR-RSF-000647

PIO Operations Map 9/19/17



AD 9/19/2017 0748



- Dip Site
- Helispot
- Drop Point
- Fire Location
- Landmark
- Lookout
- Mobile Weather Unit
- Repeater
- Sling Site
- Uncontrolled Fire Edge
- Completed Line
- Completed Dozer Line
- Completed Hand Line
- Road as Completed Line
- Pacific Crest Trail
- Forest Boundary
- Inventory Roadless Area
- Botanical Areas
- Timber Sale
- Wilderness
- Oregon Caves Ntl. Monument
- Bureau of Land Management
- Private and State
- National Park Service
- Eclipse Complex Poly
- Fire History 2006-16

Incident Name	GIS Acres
Abney	29,465.8
Bear Wallow	0.1
Bigelow	71.1
Burnt Peak	4,147.0
Creedence	2,092.0
Knox	492.2
Lime Gulch	3.9
Overview	0.1
Slick Rock	0.1
Steamboat	6.2
Whiskey Ridge	0.2
Total	36,278.6

As of 9/19/17 @ 0700