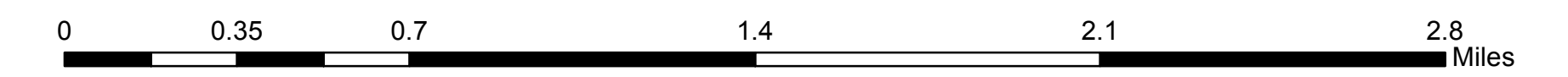
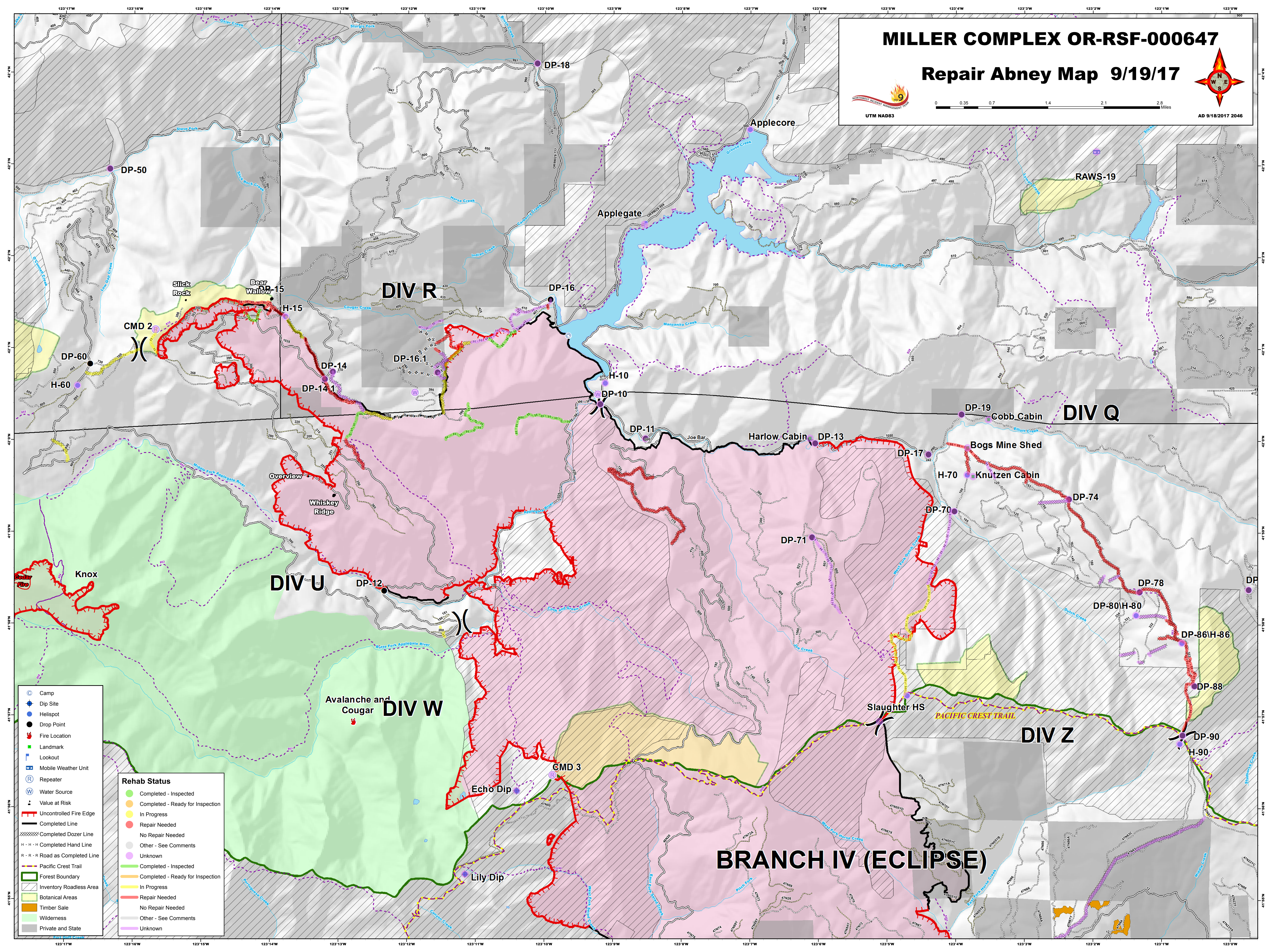


# MILLER COMPLEX OR-RSF-000647

## Repair Abney Map 9/19/17



AD 9/18/2017 2046



- Camp
- Dip Site
- Helispot
- Drop Point
- Fire Location
- Landmark
- Lookout
- Mobile Weather Unit
- Repeater
- Water Source
- Value at Risk
- Uncontrolled Fire Edge
- Completed Line
- Completed Dozer Line
- Completed Hand Line
- R - R - R Road as Completed Line
- Pacific Crest Trail
- Forest Boundary
- Inventory Roadless Area
- Botanical Areas
- Timber Sale
- Wilderness
- Private and State

| Rehab Status |                                  |
|--------------|----------------------------------|
| Green        | Completed - Inspected            |
| Yellow       | Completed - Ready for Inspection |
| Orange       | In Progress                      |
| Red          | Repair Needed                    |
| White        | No Repair Needed                 |
| Grey         | Other - See Comments             |
| Purple       | Unknown                          |
| Green        | Completed - Inspected            |
| Yellow       | Completed - Ready for Inspection |
| Orange       | In Progress                      |
| Red          | Repair Needed                    |
| White        | No Repair Needed                 |
| Grey         | Other - See Comments             |
| Purple       | Unknown                          |