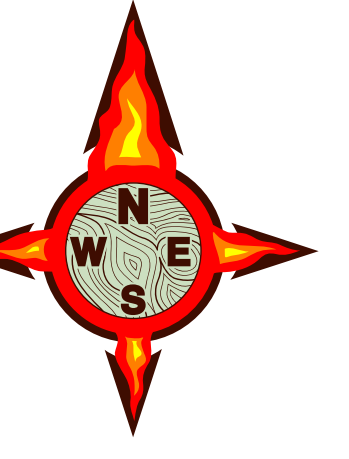


# MILLER COMPLEX OR-RSF-000647

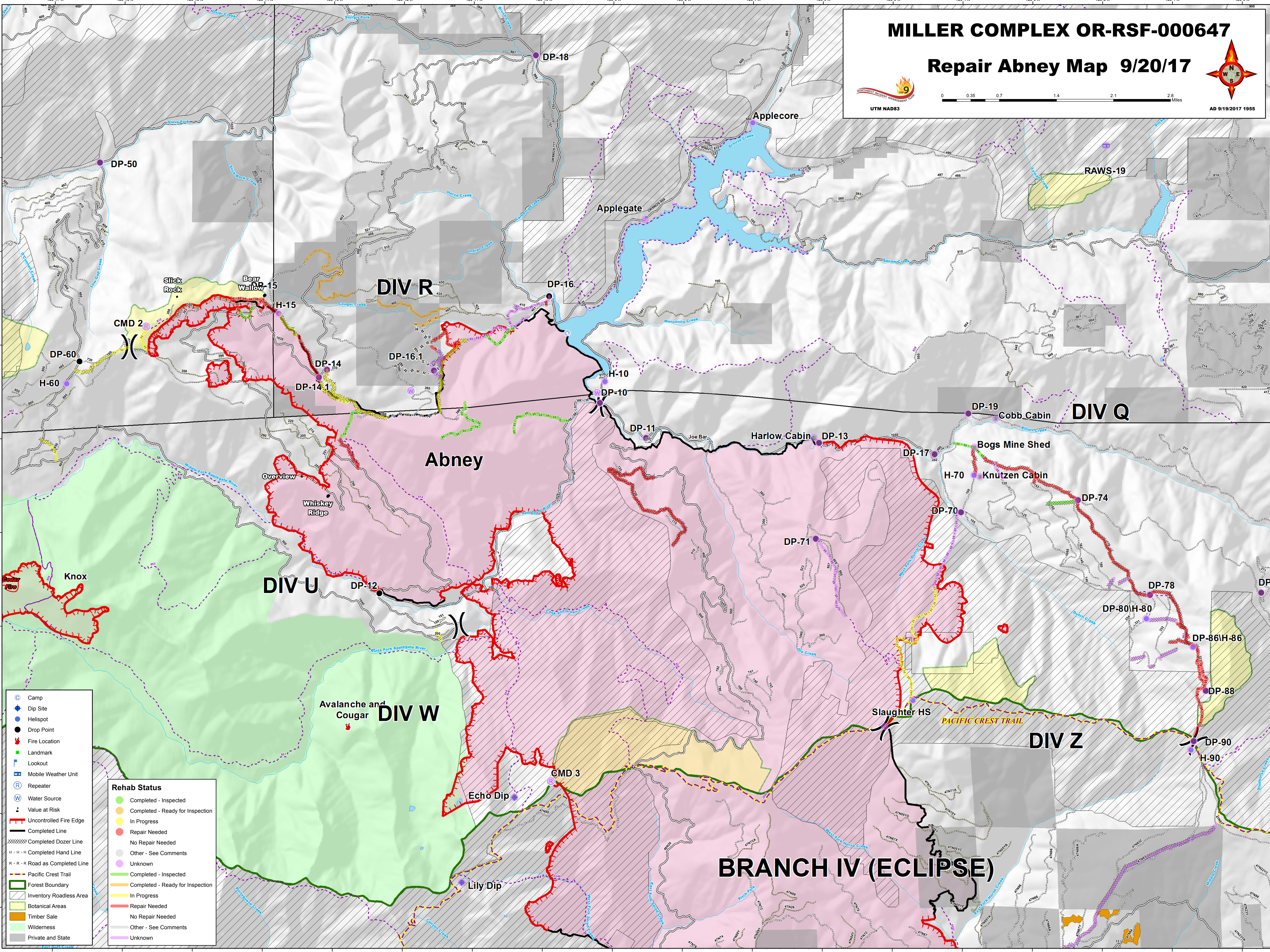
## Repair Abney Map 9/20/17



0 0.35 0.7 1.4 2.1 2.8 Miles



AD 9/19/2017 1955



- Camp
- Dip Site
- Helispot
- Drop Point
- Fire Location
- Landmark
- Lookout
- Mobile Weather Unit
- Repeater
- Water Source
- Value at Risk
- Uncontrolled Fire Edge
- Completed Line
- Completed Dozer Line
- Completed Hand Line
- R - R - R Road as Completed Line
- Pacific Crest Trail
- Forest Boundary
- Inventory Roadless Area
- Botanical Areas
- Timber Sale
- Wilderness
- Private and State

Rehab Status	
Green	Completed - Inspected
Yellow	Completed - Ready for Inspection
Orange	In Progress
Red	Repair Needed
Grey	No Repair Needed
Light Blue	Other - See Comments
Purple	Unknown
Green	Completed - Inspected
Yellow	Completed - Ready for Inspection
Orange	In Progress
Red	Repair Needed
Grey	No Repair Needed
Light Blue	Other - See Comments
Purple	Unknown

# BRANCH IV (ECLIPSE)