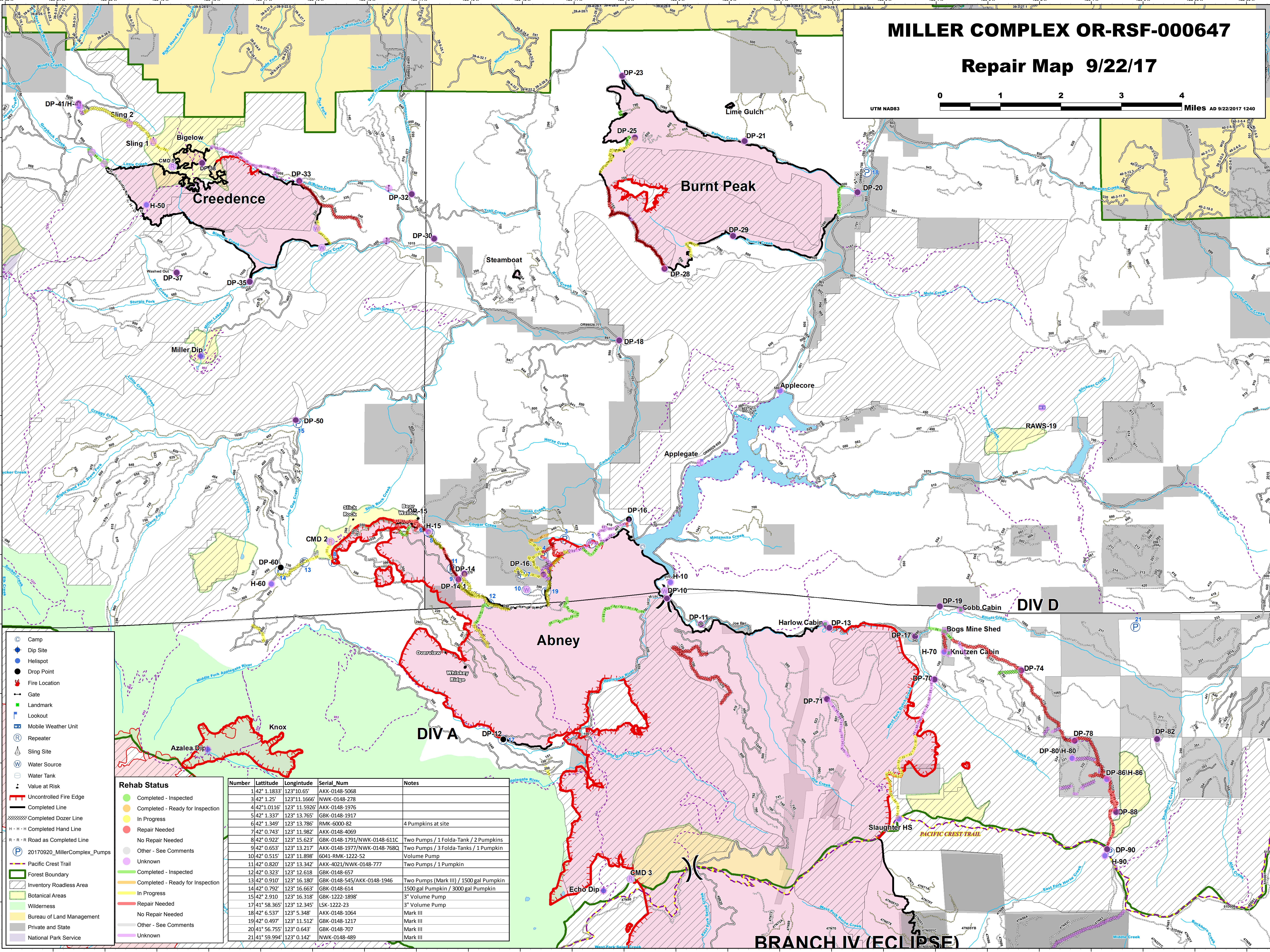
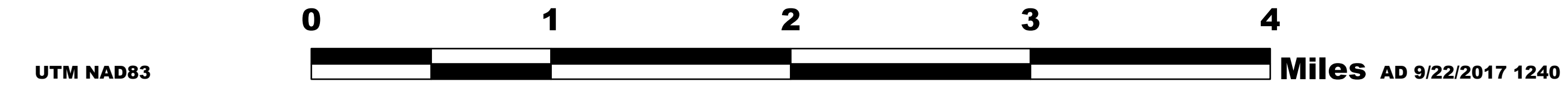


MILLER COMPLEX OR-RSF-000647

Repair Map 9/22/17



- Camp
- Dip Site
- Helispot
- Drop Point
- Fire Location
- Gate
- Landmark
- Lookout
- Mobile Weather Unit
- Repeater
- Sling Site
- Water Source
- Water Tank
- Value at Risk
- Uncontrolled Fire Edge
- Completed Line
- Completed Dozer Line
- Completed Hand Line
- Road as Completed Line
- 20170920_MillerComplex_Pumps
- Pacific Crest Trail
- Forest Boundary
- Inventory Roadless Area
- Botanical Areas
- Wilderness
- Bureau of Land Management
- Private and State
- National Park Service

Rehab Status

- Completed - Inspected
- Completed - Ready for Inspection
- In Progress
- Repair Needed
- No Repair Needed
- Other - See Comments
- Unknown
- Completed - Inspected
- Completed - Ready for Inspection
- In Progress
- Repair Needed
- No Repair Needed
- Other - See Comments
- Unknown

Number	Latitude	Longitude	Serial_Num	Notes
1	42° 1.1833'	123° 10.65'	AKK-0148-5068	
3	42° 1.25'	123° 11.1666'	NWK-0148-278	
4	42° 1.0116'	123° 11.5926'	AKK-0148-1976	
5	42° 1.337'	123° 13.765'	GBK-0148-1917	
6	42° 1.349'	123° 13.786'	RMK-6000-82	4 Pumpkins at site
7	42° 0.743'	123° 11.982'	AKK-0148-4069	
8	42° 0.922'	123° 15.623'	GBK-0148-1791/NWK-0148-611C	Two Pumps / 1 Folda-Tank / 2 Pumpkins
9	42° 0.653'	123° 13.217'	AKK-0148-1977/NWK-0148-768Q	Two Pumps / 3 Folda-Tanks / 1 Pumpkin
10	42° 0.515'	123° 11.898'	6041-RMK-1222-52	Volume Pump
11	42° 0.820'	123° 13.342'	AKK-4021/NWK-0148-777	Two Pumps / 1 Pumpkin
12	42° 0.323'	123° 12.618'	GBK-0148-657	
13	42° 0.910'	123° 16.180'	GBK-0148-545/AKK-0148-1946	Two Pumps (Mark III) / 1500 gal Pumpkin
14	42° 0.792'	123° 16.663'	GBK-0148-614	1500 gal Pumpkin / 3000 gal Pumpkin
15	42° 2.910'	123° 16.318'	GBK-1222-1898'	3" Volume Pump
17	41° 58.365'	123° 12.345'	LSK-1222-23	3" Volume Pump
18	42° 6.537'	123° 5.348'	AKK-0148-1064	Mark III
19	42° 0.497'	123° 11.512'	GBK-0148-1217	Mark III
20	41° 56.755'	123° 0.643'	GBK-0148-707	Mark III
21	41° 59.994'	123° 0.142'	NWK-0148-489	Mark III

BRANCH IV (EC) IPSE