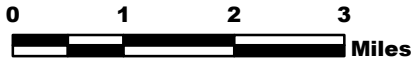


MILLER COMPLEX OR-RSF-000647

Rogue River National Forest

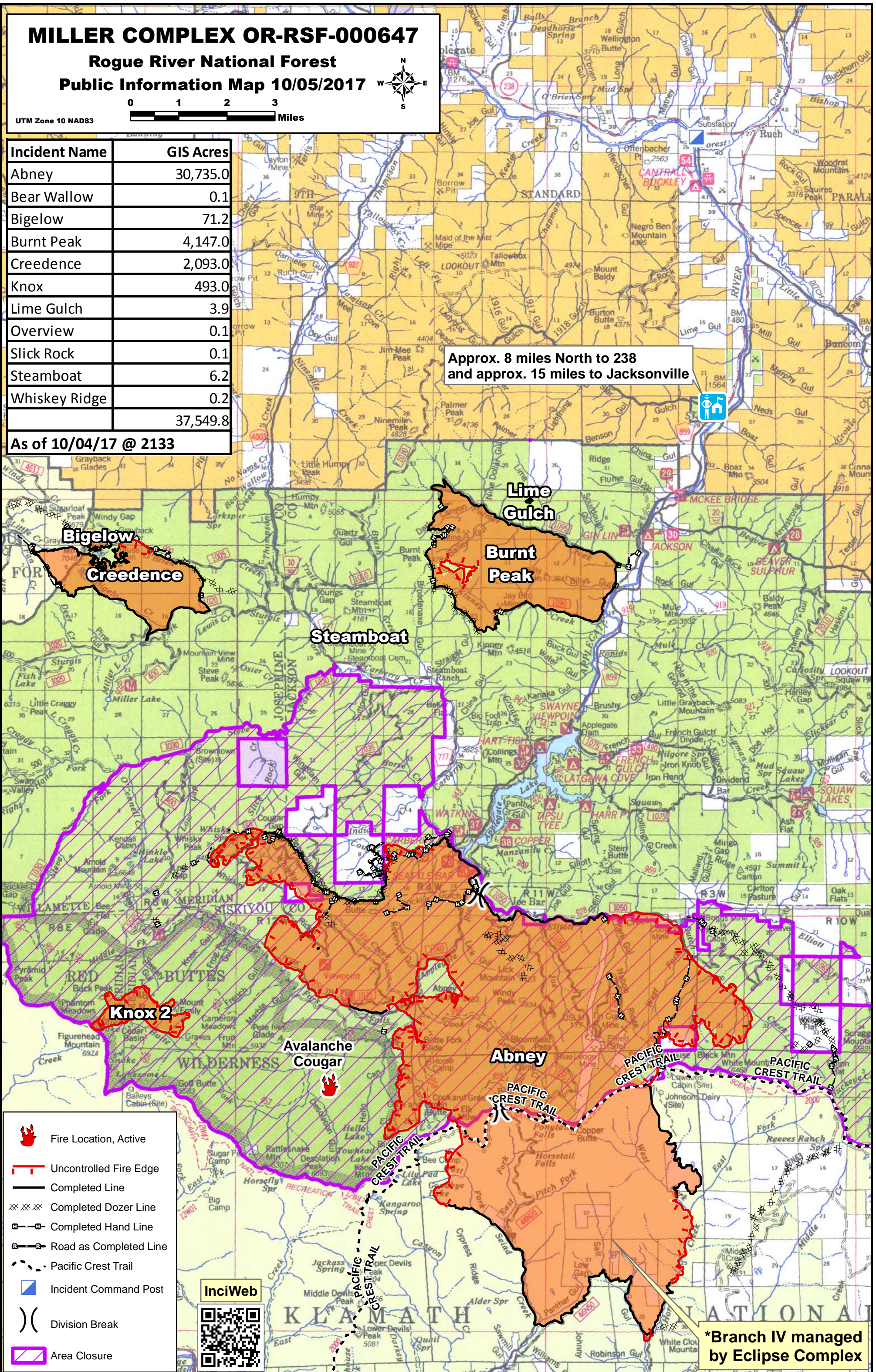
Public Information Map 10/05/2017



UTM Zone 10 NAD83

Incident Name	GIS Acres
Abney	30,735.0
Bear Wallow	0.1
Bigelow	71.2
Burnt Peak	4,147.0
Credence	2,093.0
Knox	493.0
Lime Gulch	3.9
Overview	0.1
Slick Rock	0.1
Steamboat	6.2
Whiskey Ridge	0.2
	37,549.8

As of 10/04/17 @ 2133



Approx. 8 miles North to 238 and approx. 15 miles to Jacksonville

*Branch IV managed by Eclipse Complex

- Fire Location, Active
- Uncontrolled Fire Edge
- Completed Line
- Completed Dozer Line
- Completed Hand Line
- Road as Completed Line
- Pacific Crest Trail
- Incident Command Post
- Division Break
- Area Closure



InciWeb