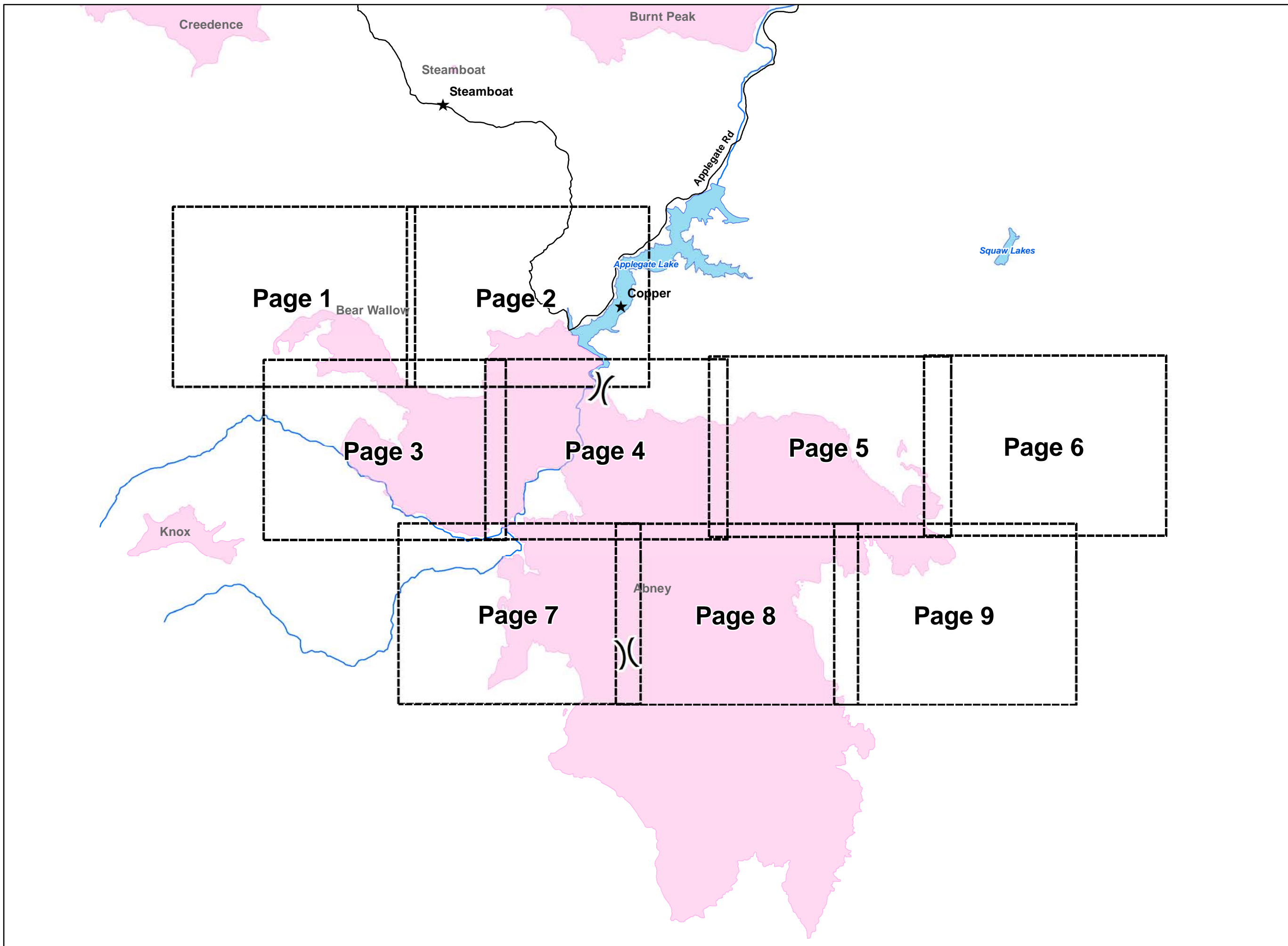
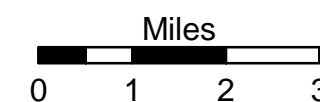
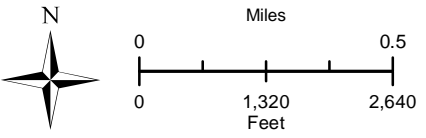
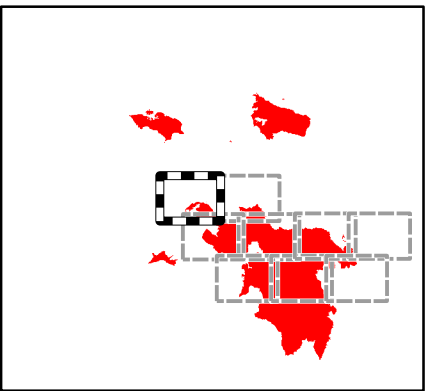
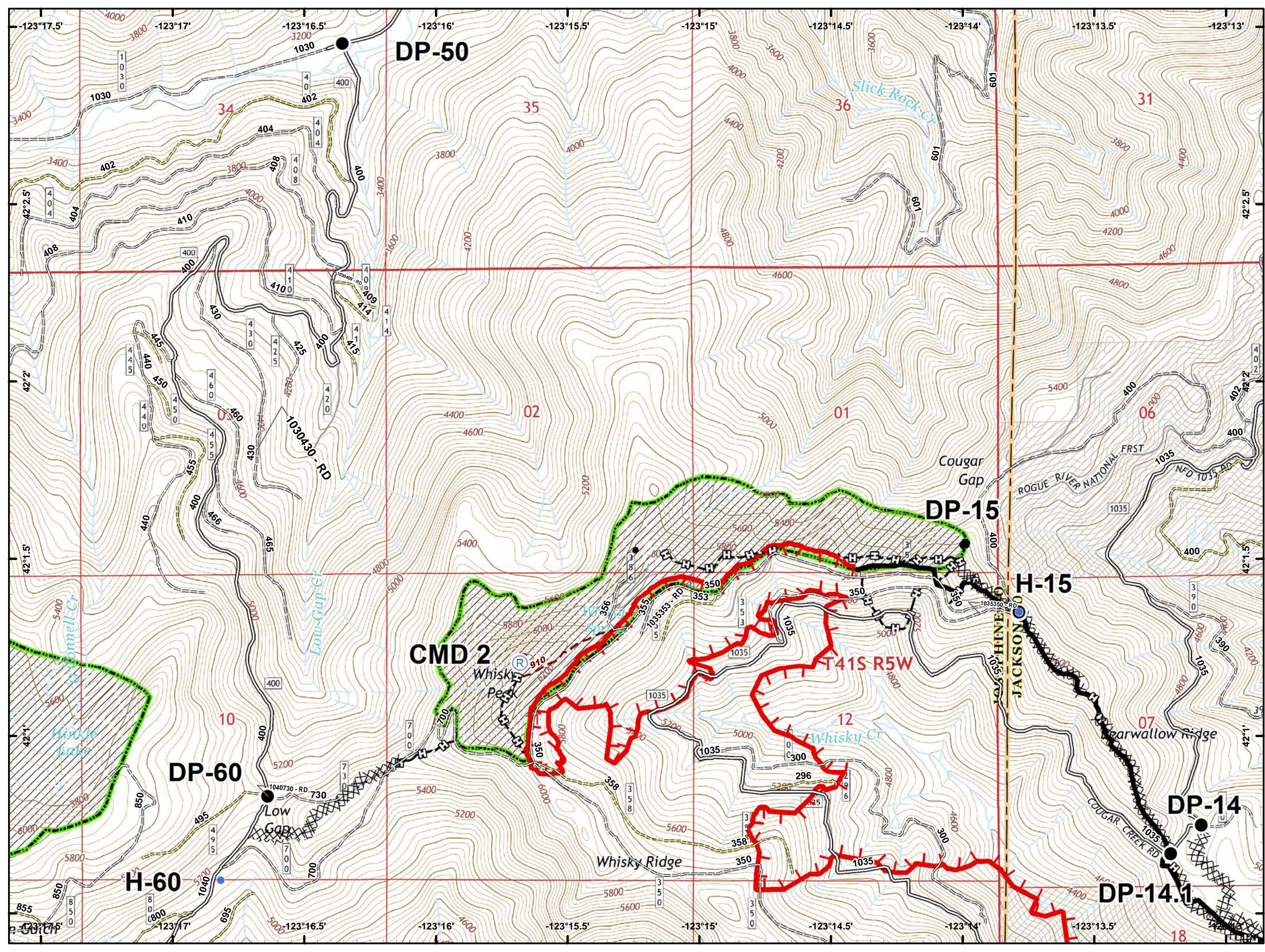


**Miller Complex
OR-RSF-000647
Rogue River Siskiyou
National Forest
10/08/2017**

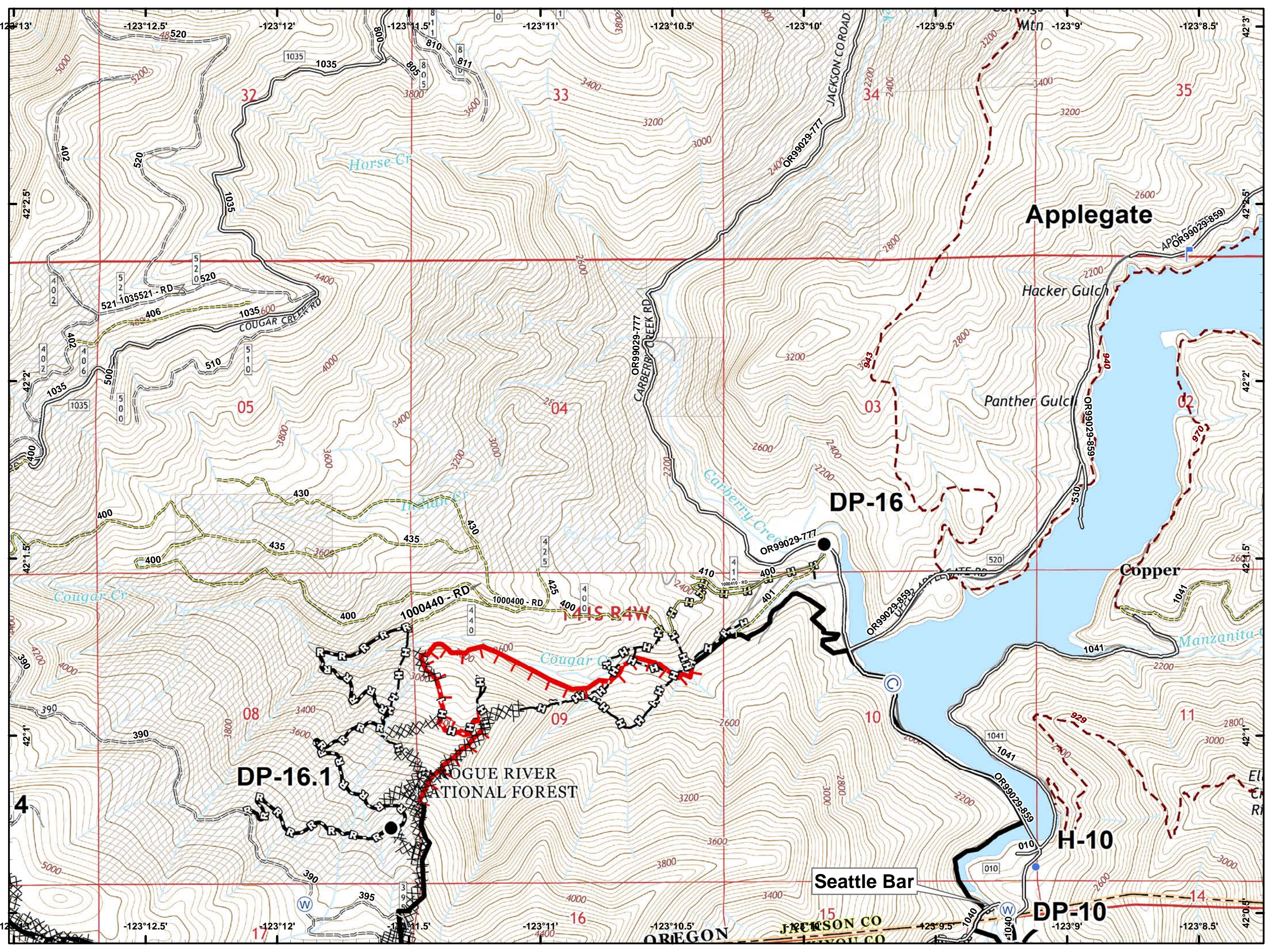
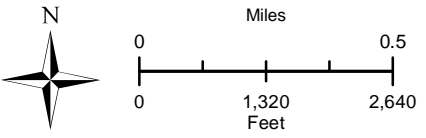
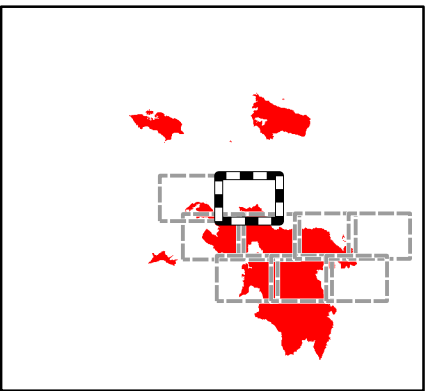
- ★ Towns
- ⊞ Map Index Pages
- Fire Area



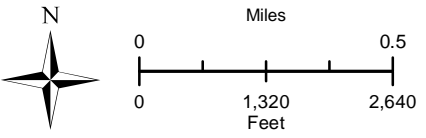
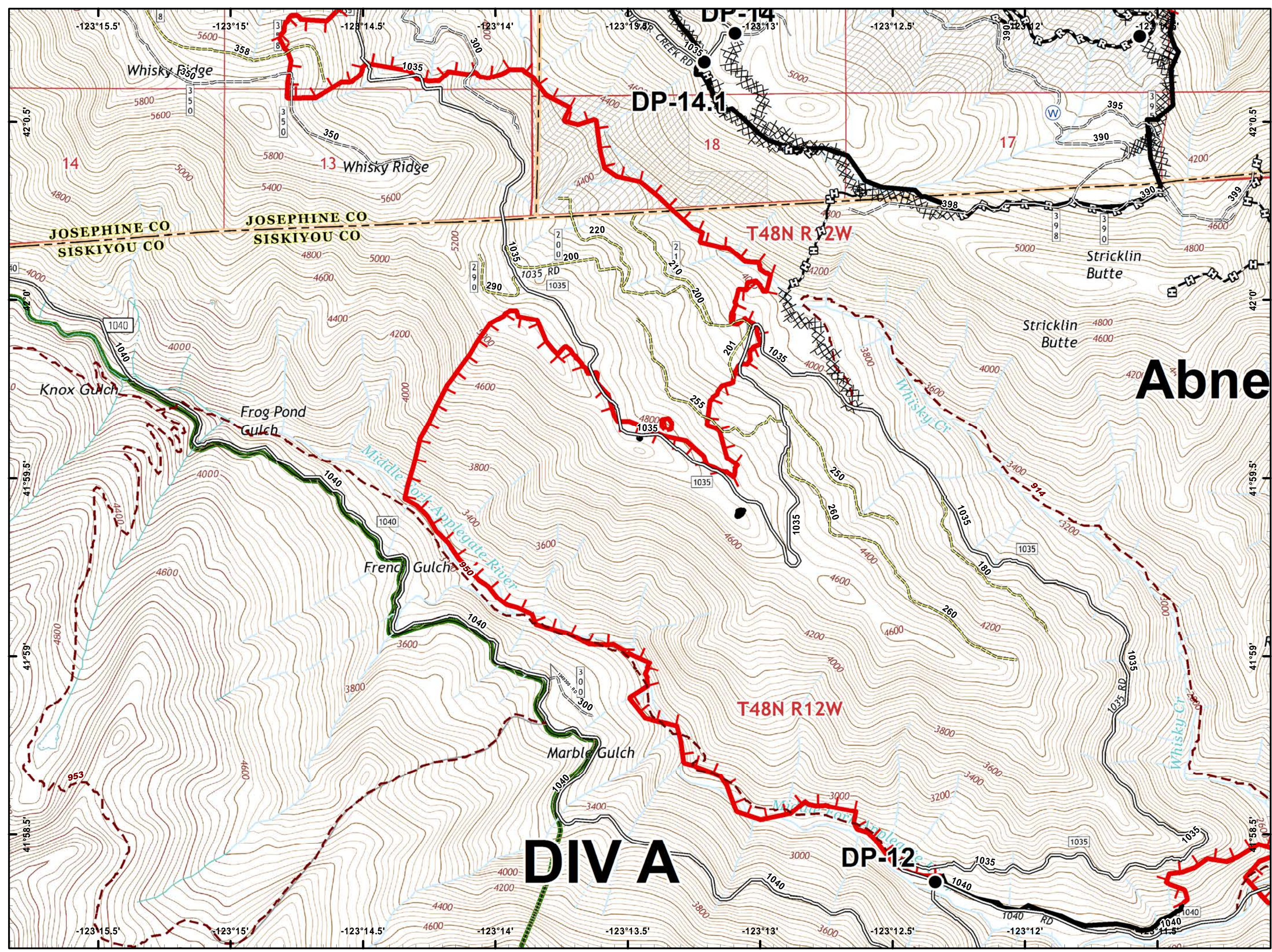
- Drop Point
- Helispot
- Ⓡ Repeater
- 🔴 Uncontrolled Fire Edge
- ⚫ Completed Line
- ⚫ Completed Dozer Line
- ⚫ Completed Hand Line
- ⚫ Private and State



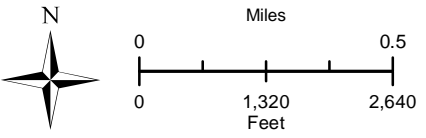
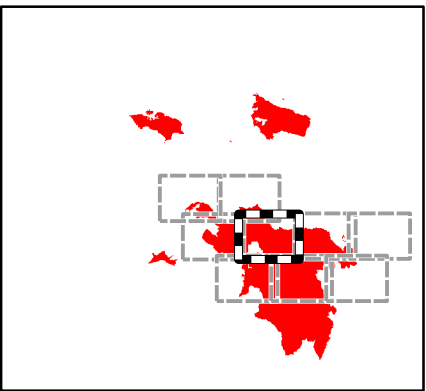
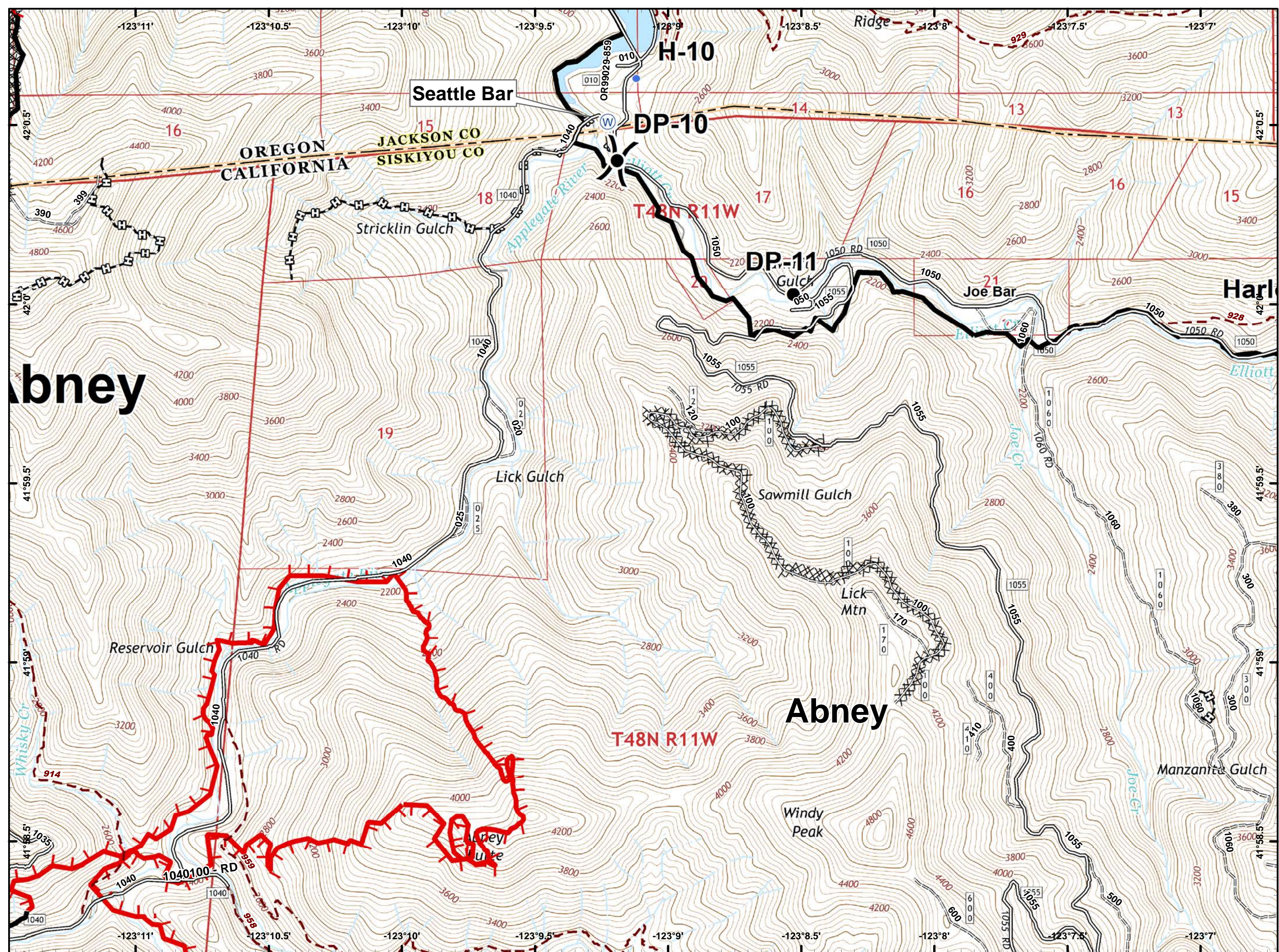
- Ⓒ Camp
- Drop Point
- Helispot
- ⌚ Lookout
- Ⓜ Water Source
- ⚠ Value at Risk
-) (Division Break
- 🔴 Uncontrolled Fire Edge
- ⚫ Completed Line
- ⚡ Completed Dozer Line
- ⚡ Completed Hand Line
- 🛣 Road as Completed Line
- ⚡ Private and State



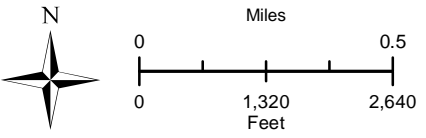
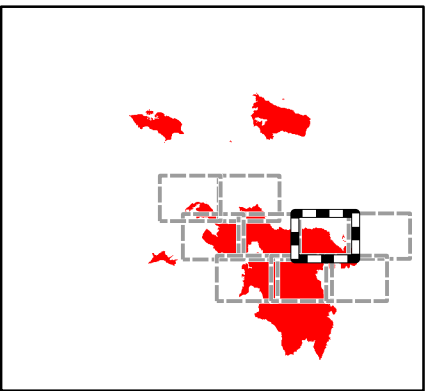
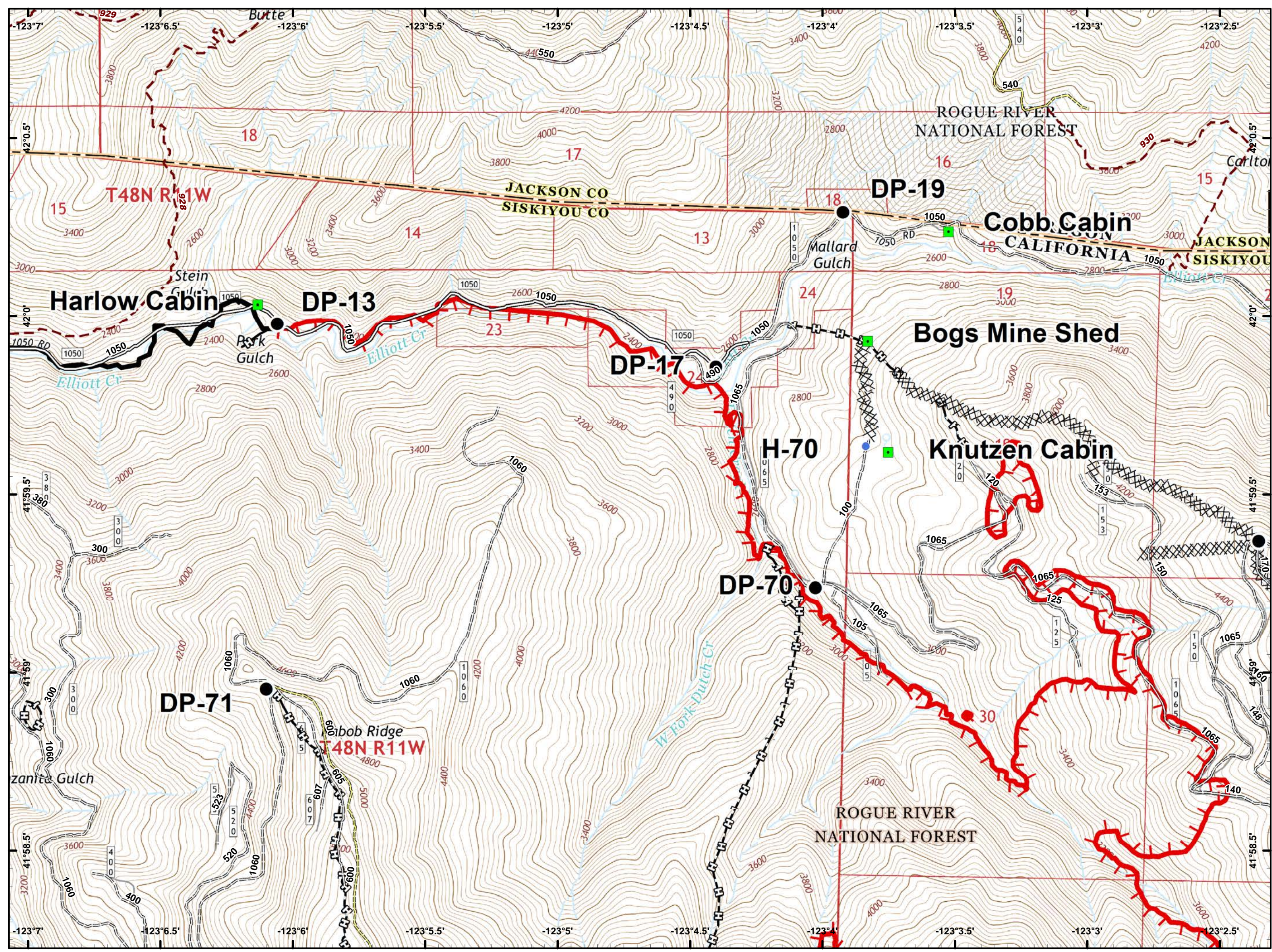
- Drop Point
- Ⓜ Water Source
- 🔴 Uncontrolled Fire Edge
- ⚫ Completed Line
- ⚫ Completed Dozer Line
- ⚫ Completed Hand Line
- 🚶 Road as Completed Line
- 🌿 Wilderness
- 🏠 Private and State



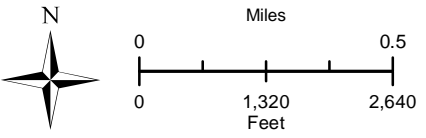
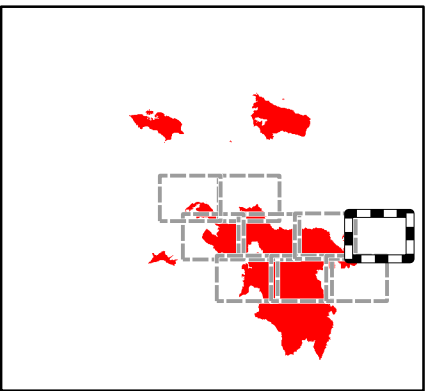
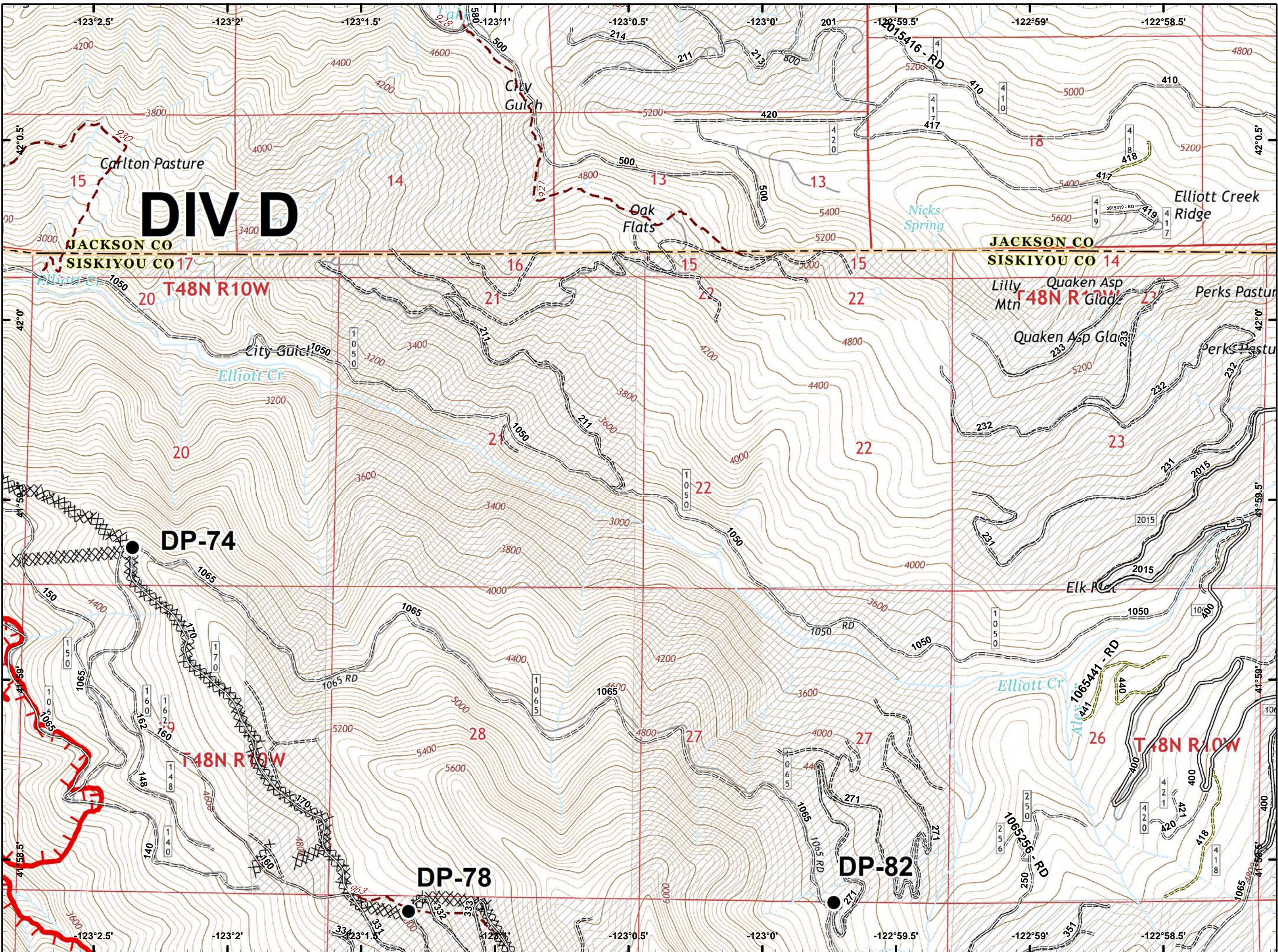
- Drop Point
- Helispot
- Ⓜ Water Source
- ⚠ Value at Risk
-) (Division Break
- 🔴 Uncontrolled Fire Edge
- ⤵ Completed Line
- ⚡ Completed Dozer Line
- 👉 Completed Hand Line
- 🛣 Road as Completed Line
- ⚡ Private and State



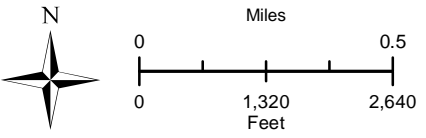
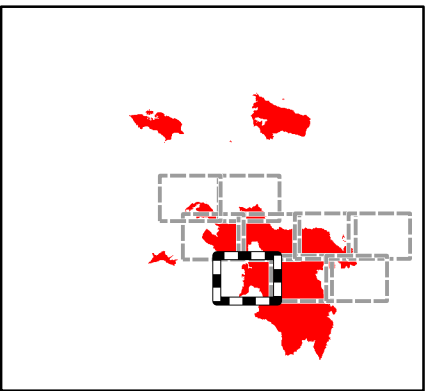
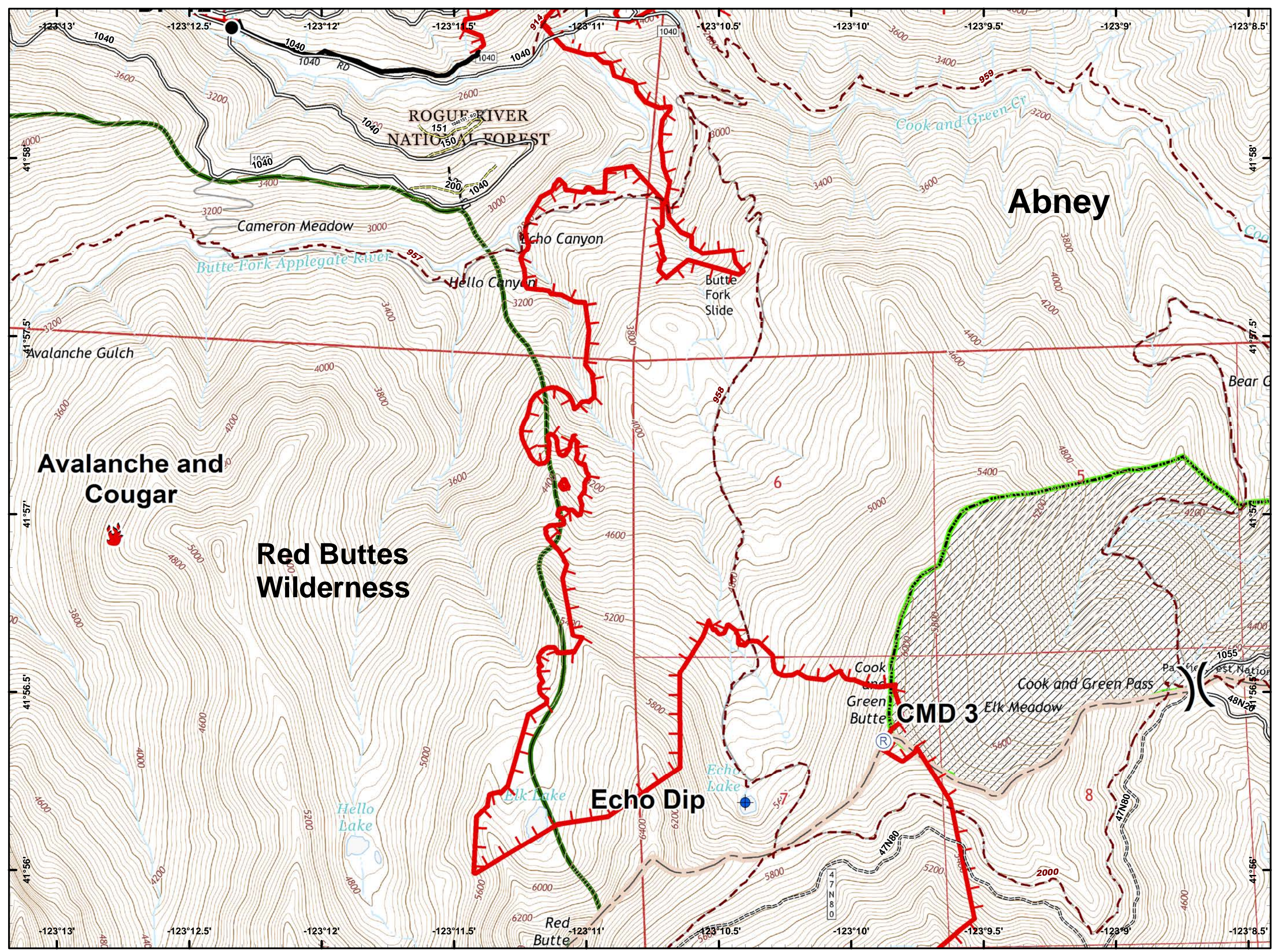
- Drop Point
- Helispot
- Landmark
- 🔴 Uncontrolled Fire Edge
- ⚫ Completed Line
- ⚫ Completed Dozer Line
- ⚫ Completed Hand Line
- ⚫ Private and State



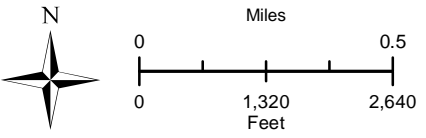
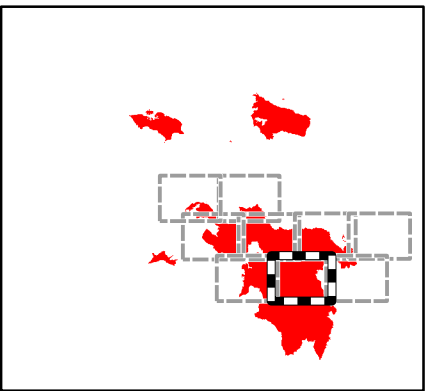
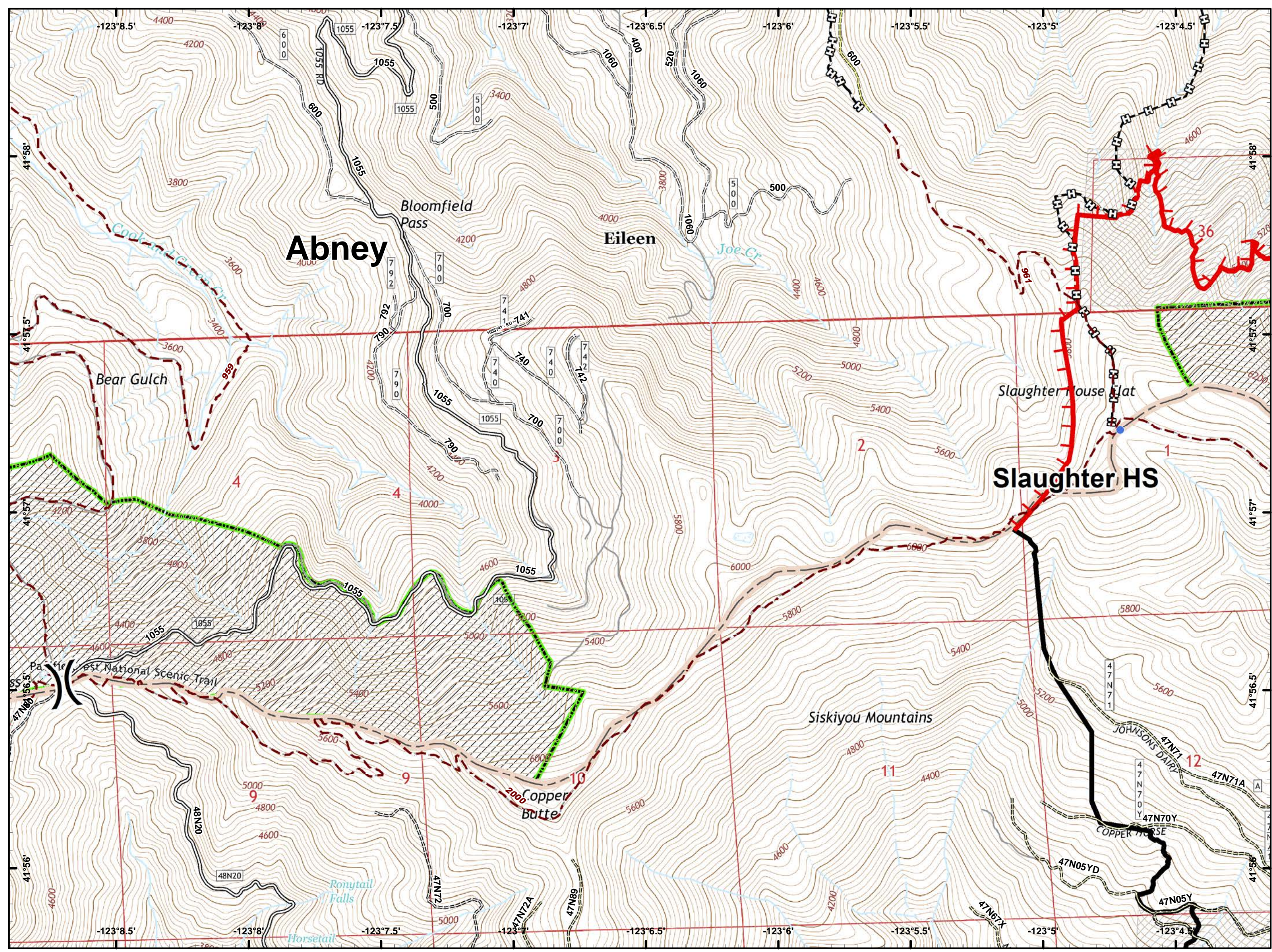
- Drop Point
- 🔴 Uncontrolled Fire Edge
- ⊗ Completed Dozer Line
- ⊕ Private and State



-  Dip Site
-  Drop Point
-  Fire Location
-  Repeater
-  Division Break
-  Uncontrolled Fire Edge
-  Completed Line
-  Completed Hand Line
-  Wilderness



- Helispot
-) (Division Break
- 🔴 Uncontrolled Fire Edge
- ⚫ Completed Line
- 🔗 Completed Hand Line



- Drop Point
- Helispot
- 🔴 Uncontrolled Fire Edge
- ⤵ Completed Line
- ⊗ Completed Dozer Line
- ⊞ Completed Hand Line

