

MILLER COMPLEX OR-RSF-000647

Rogue River National Forest

Abney Operations Map 10/14/17



FeatureCategory	Label	Lat	Long
Dip Site	Miller Dip	42° 3.867' N	122° 18.195' W
Dip Site	Echo Dip	41° 56.193' N	122° 10.407' W
Dip Site	Lily Dip	41° 55.289' N	122° 11.101' W
Dip Site	Azalea Dip	41° 58.207' N	122° 18.036' W
Dip Site	Lonesome Dip	41° 56.976' N	122° 17.839' W
Dip Site	Revan Dip	42° 1.917' N	122° 22.977' W
Drop Point	DP-10	42° 0.407' N	122° 9.911' W
Drop Point	DP-28	42° 5.145' N	122° 9.245' W
Drop Point	DP-25	42° 7.927' N	122° 9.823' W
Drop Point	DP-23	42° 7.917' N	122° 10.072' W
Drop Point	DP-21	42° 6.982' N	122° 7.703' W
Drop Point	DP-38	42° 6.687' N	122° 18.185' W
Drop Point	DP-32	42° 6.212' N	122° 14.133' W
Drop Point	DP-30	42° 5.568' N	122° 13.688' W
Drop Point	DP-15	42° 4.844' N	122° 12.252' W
Drop Point	DP-33	42° 6.398' N	122° 16.306' W
Drop Point	DP-14	42° 0.749' N	122° 13.095' W
Drop Point	DP-16	42° 1.537' N	122° 9.923' W
Drop Point	DP-41	42° 7.488' N	122° 20.574' W
Drop Point	DP-20	42° 6.249' N	122° 5.522' W
Drop Point	DP-12	41° 58.365' N	122° 12.339' W
Drop Point	DP-29	42° 5.618' N	122° 7.924' W
Drop Point	DP-37	42° 5.069' N	122° 18.666' W
Drop Point	DP-15M-15	42° 1.349' N	122° 13.786' W
Drop Point	DP-18	42° 4.111' N	122° 10.117' W
Drop Point	DP-14.1	42° 0.668' N	122° 13.210' W
Drop Point	DP-11	42° 0.027' N	122° 8.507' W
Drop Point	DP-13	42° 59.278' N	122° 9.923' W
Drop Point	DP-17	41° 59.857' N	122° 4.402' W
Drop Point	DP-19	42° 0.292' N	122° 3.583' W
Drop Point	DP-60	42° 0.687' N	122° 16.688' W
Drop Point	DP-50	42° 2.953' N	122° 16.355' W
Drop Point	DP-90	41° 56.798' N	122° 0.698' W
Drop Point	DP-74	41° 59.368' N	122° 2.354' W
Drop Point	DP-78	41° 59.107' N	122° 3.107' W
Drop Point	DP-80	41° 58.104' N	122° 1.172' W
Drop Point	DP-86	41° 57.803' N	122° 0.704' W
Drop Point	DP-88	41° 57.334' N	122° 0.524' W
Drop Point	DP-71	42° 1.349' N	122° 6.107' W
Drop Point	DP-16.1	42° 0.740' N	122° 11.567' W
Fire Location	Avalanche Cougar	41° 56.945' N	122° 12.779' W
Review	Review	42° 1.327' N	122° 26.913' W
Helibase	Cave Junction	42° 6.007' N	122° 41.002' W
Helispot	Applegate	42° 3.394' N	122° 7.007' W
Helispot	Hamilton	42° 14.658' N	122° 9.817' W
Helispot	H-41	42° 7.460' N	122° 20.560' W
Helispot	Slaughter HS	41° 57.230' N	122° 4.710' W
Helispot	H-50	42° 2.349' N	122° 13.786' W
Helispot	H-50	42° 6.043' N	122° 19.252' W
Helispot	H-80	41° 58.104' N	122° 1.172' W
Helispot	H-86	41° 57.803' N	122° 0.704' W
Helispot	H-90	41° 56.798' N	122° 0.735' W
Helispot	H-10	42° 0.027' N	122° 9.107' W
Helispot	H-60	42° 0.687' N	122° 16.688' W
Incident Command Post	Incident Command Post	42° 14.658' N	122° 9.945' W
Landmark	Knutzen Cabin	41° 59.618' N	122° 3.752' W
Landmark	Bogs Mine Shed	41° 59.929' N	122° 3.828' W
Landmark	Harlow Cabin	42° 0.027' N	122° 6.107' W
Landmark	Cobb Cabin	42° 0.237' N	122° 3.523' W
Lookout	Applegate	42° 2.357' N	122° 8.547' W
Repeater	CMD 1	42° 11.785' N	122° 9.987' W
Repeater	CMD 2	42° 1.206' N	122° 15.681' W
Repeater	CMD 3	41° 56.369' N	122° 9.887' W
Repeater	CMD 4	42° 2.618' N	122° 15.449' W
Repeater	CMD 5	42° 6.595' N	122° 18.755' W
String Site	String 1	42° 7.107' N	122° 19.587' W
String Site	String 2	42° 6.961' N	122° 19.127' W
Mobile Weather Unit	RAWS-19	42° 1.152' N	122° 10.952' W

- Camp
- Dip Site
- Helispot
- Drop Point
- Fire Location
- Landmark
- Lookout
- Mobile Weather Unit
- Repeater
- Staging Area
- Water Source
- Value at Risk
- Division Break

Incident Name	GIS Acres
Abney	32,422.0
Bear Wallow	0.1
Bigelow	71.2
Burnt Peak	4,147.0
Credence	2,093.0
Knox	494.0
Lime Gulch	3.9
Overview	0.1
Slick Rock	0.1
Steamboat	6.2
Whiskey Ridge	0.2
Total	39,237.8

As of 10/14/17 @ 1100

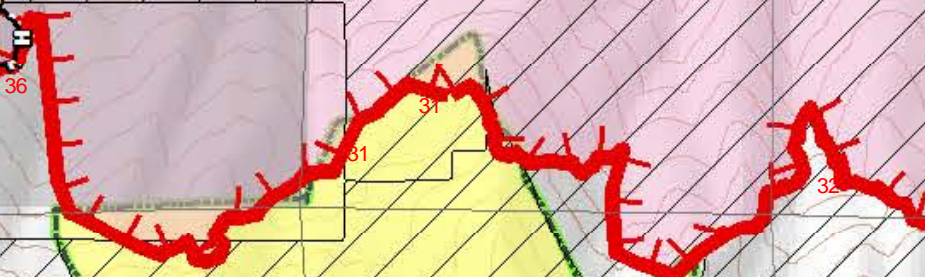
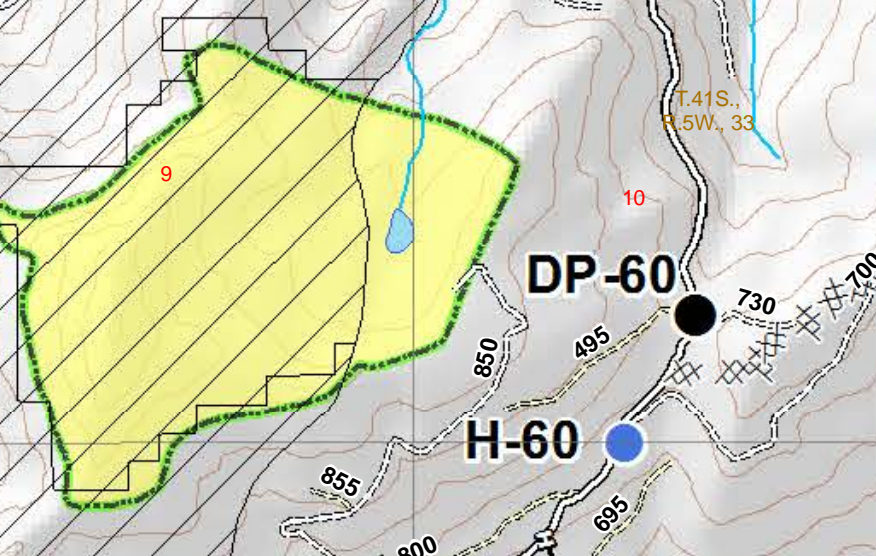
- Uncontrolled Fire Edge
- Completed Line
- Completed Dozer Line
- Completed Hand Line
- Road as Completed Line
- Other
- Pacific Crest Trail
- Forest Boundary
- Inventory Roadless Area
- Botanical Areas
- Timber Sale
- Wilderness
- Private and State
- Eclipse Complex Poly



BRANCH IV (ECLIPSE)

DIV D

DIV A



- Camp
- Dip Site
- Helispot
- Drop Point
- Fire Location
- Landmark
- Lookout
- Mobile Weather Unit
- Repeater
- Staging Area
- Water Source
- Value at Risk
- Division Break

Incident Name	GIS Acres
Abney	32,422.0
Bear Wallow	0.1
Bigelow	71.2
Burnt Peak	4,147.0
Credence	2,093.0
Knox	494.0
Lime Gulch	3.9
Overview	0.1
Slick Rock	0.1
Steamboat	6.2
Whiskey Ridge	0.2
Total	39,237.8

As of 10/14/17 @ 1100

- Uncontrolled Fire Edge
- Completed Line
- Completed Dozer Line
- Completed Hand Line
- Road as Completed Line
- Other
- Pacific Crest Trail
- Forest Boundary
- Inventory Roadless Area
- Botanical Areas
- Timber Sale
- Wilderness
- Private and State
- Eclipse Complex Poly

