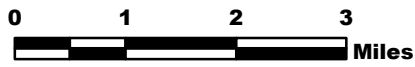


MILLER COMPLEX OR-RSF-000647

Rogue River National Forest

Public Information Map 10/14/2017

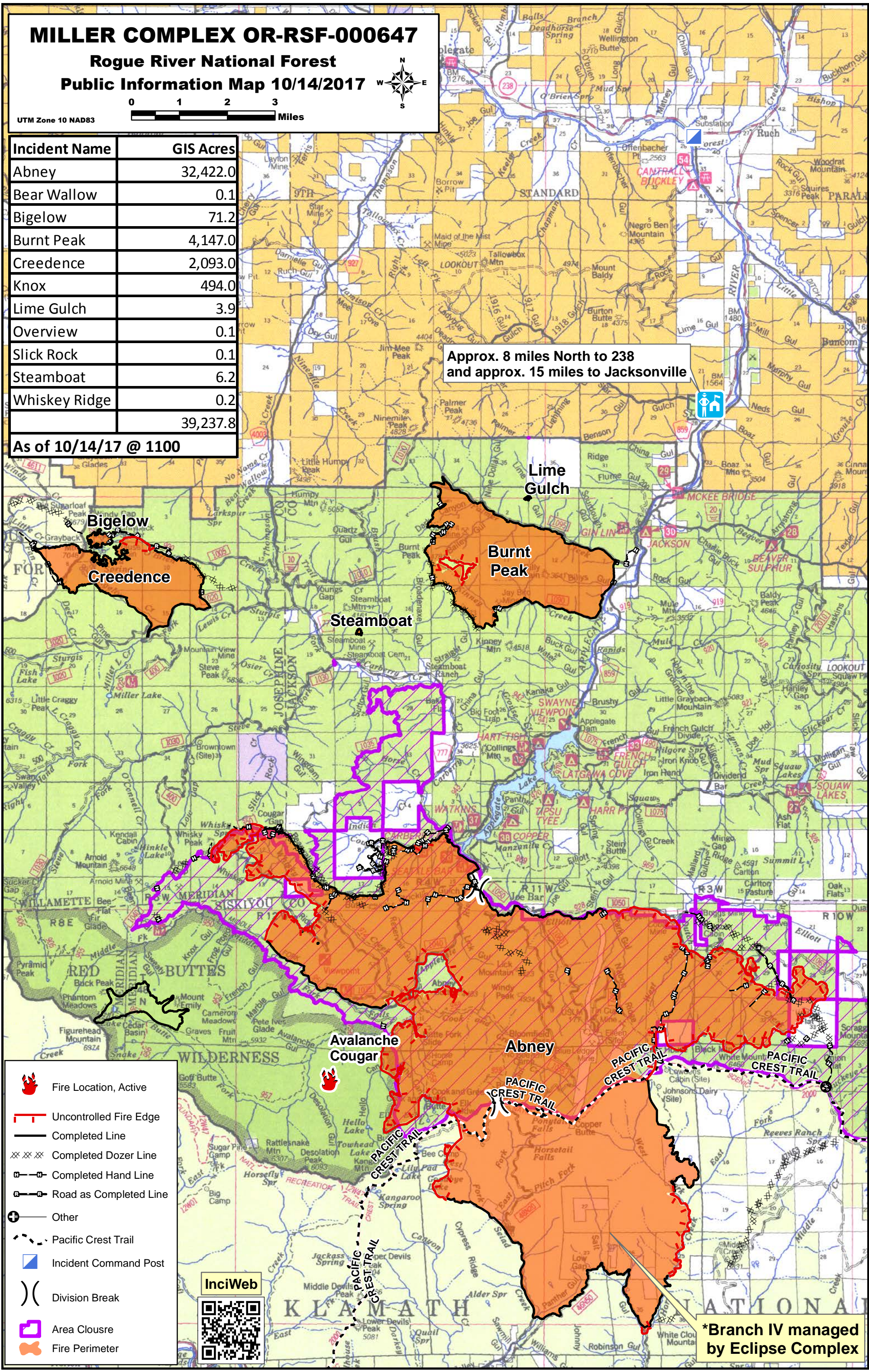


UTM Zone 10 NAD83

Incident Name	GIS Acres
Abney	32,422.0
Bear Wallow	0.1
Bigelow	71.2
Burnt Peak	4,147.0
Credence	2,093.0
Knox	494.0
Lime Gulch	3.9
Overview	0.1
Slick Rock	0.1
Steamboat	6.2
Whiskey Ridge	0.2
	39,237.8

As of 10/14/17 @ 1100

Approx. 8 miles North to 238
and approx. 15 miles to Jacksonville



- Fire Location, Active
- Uncontrolled Fire Edge
- Completed Line
- Completed Dozer Line
- Completed Hand Line
- Road as Completed Line
- Other
- Pacific Crest Trail
- Incident Command Post
- Division Break
- Area Closure
- Fire Perimeter



*Branch IV managed by Eclipse Complex