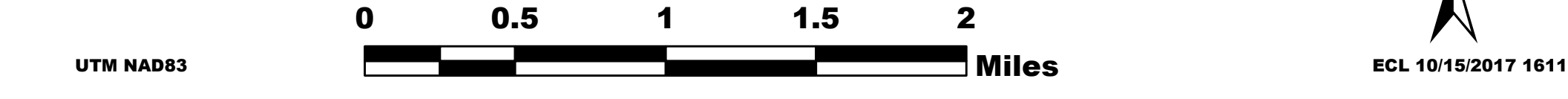


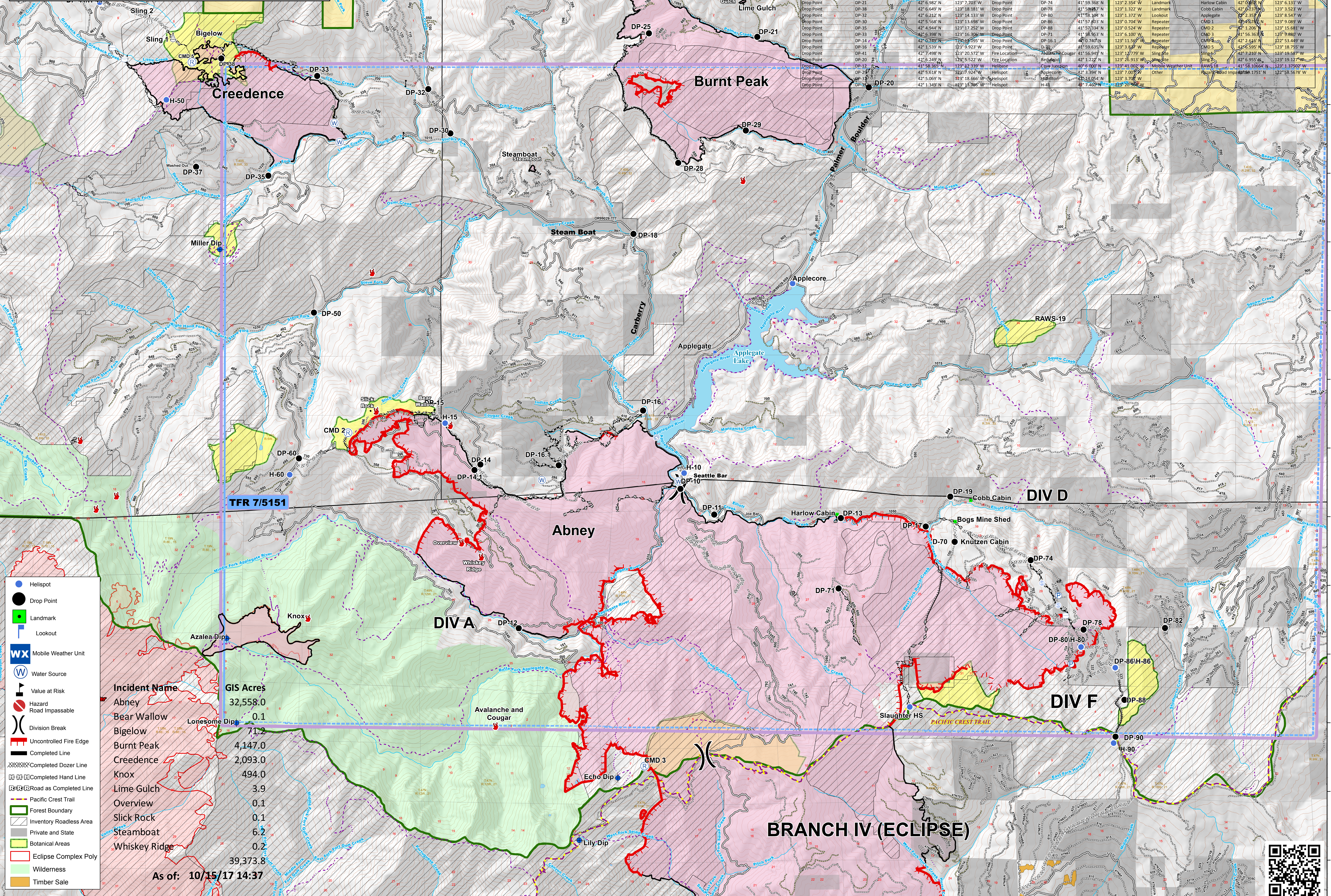
MILLER COMPLEX OR-RSF-000647

Rogue River National Forest

Operations Map 10/15/2017



FeatureCategory	Label	Lat	Long	FeatureCategory	Label	Lat	Long	FeatureCategory	Label	Lat	Long
Drop Point	Miller Dip	42° 3' 36.21" N	123° 18' 19.5" W	Drop Point	DP-14	42° 5' 6.68" N	123° 13' 21.0" W	Helispot	H-15	41° 57' 23.0" N	123° 4' 71.0" W
Drop Point	Echo Dip	41° 5' 3.90" N	123° 10' 40.0" W	Drop Point	DP-11	42° 0' 6.68" N	123° 13' 21.0" W	Helispot	H-50	42° 0' 6.68" N	123° 13' 78.6" W
Drop Point	Lily Dip	41° 5' 2.67" N	123° 11' 15.0" W	Drop Point	DP-10	42° 0' 10.07" N	123° 13' 33.0" W	Helispot	H-90	41° 58' 10.4" N	123° 1' 37.2" W
Drop Point	Azalea Dip	41° 5' 3.90" N	123° 18' 03.6" W	Drop Point	DP-17	41° 5' 3.90" N	123° 6' 05.8" W	Helispot	H-86	41° 57' 8.03" N	123° 0' 70.4" W
Drop Point	Lonesome Dip	41° 5' 3.90" N	123° 17' 83.9" W	Drop Point	DP-19	41° 5' 3.90" N	123° 4' 40.2" W	Helispot	H-90	41° 56' 7.05" N	123° 0' 73.5" W
Drop Point	Bolan Dip	42° 0' 1.00" N	123° 27' 57.0" W	Drop Point	DP-60	42° 0' 1.00" N	123° 16' 6.88" W	Helispot	H-10	42° 0' 6.68" N	123° 16' 31.7" W
Drop Point	DP-10	42° 0' 1.00" N	123° 9' 19.1" W	Drop Point	DP-56	42° 2' 9.53" N	123° 16' 35.7" W	Helispot	H-60	42° 0' 6.68" N	123° 16' 31.7" W
Drop Point	DP-25	42° 3' 4.17" N	123° 9' 82.2" W	Drop Point	DP-20	41° 56' 7.05" N	123° 0' 6.68" W	Helispot	H-60	42° 0' 6.68" N	123° 16' 31.7" W
Drop Point	DP-23	42° 3' 4.17" N	123° 10' 07.2" W	Drop Point	DP-32	41° 58' 3.81" N	122° 59' 23.3" W	Landmark	Bogs Mine Shed	41° 58' 3.81" N	122° 59' 23.3" W
Drop Point	DP-21	42° 6' 9.82" N	123° 7' 70.8" W	Drop Point	DP-74	41° 58' 3.81" N	123° 2' 35.4" W	Landmark	Harlow Cabin	42° 0' 6.68" N	123° 6' 13.1" W
Drop Point	DP-38	42° 6' 9.82" N	123° 18' 18.1" W	Drop Point	DP-78	41° 58' 3.81" N	123° 1' 32.2" W	Landmark	Cobb Cabin	42° 0' 6.68" N	123° 3' 52.3" W
Drop Point	DP-32	42° 6' 12.12" N	123° 14' 13.3" W	Drop Point	DP-80	41° 58' 3.81" N	123° 1' 37.2" W	Lookout	Applegate	42° 2' 3.51" N	123° 8' 54.7" W
Drop Point	DP-30	42° 5' 5.68" N	123° 13' 6.98" W	Drop Point	DP-86	41° 57' 8.03" N	123° 0' 70.4" W	Repeater	CMO 1	42° 0' 6.68" N	123° 9' 08.9" W
Drop Point	DP-35	42° 4' 4.44" N	123° 17' 25.2" W	Drop Point	DP-88	41° 57' 33.4" N	123° 0' 52.4" W	Repeater	CMO 2	41° 58' 10.4" N	123° 15' 8.8" W
Drop Point	DP-33	42° 6' 9.82" N	123° 16' 30.6" W	Drop Point	DP-71	41° 58' 3.81" N	123° 6' 10.0" W	Repeater	CMO 3	41° 56' 30.3" N	123° 9' 8.0" W
Drop Point	DP-14	42° 0' 7.49" N	123° 14' 05.5" W	Drop Point	DP-16.1	42° 0' 7.49" N	123° 11' 5.1" W	Repeater	CMO 5	42° 2' 6.46" N	122° 5' 34.9" W
Drop Point	DP-16	42° 1' 5.39" N	123° 9' 9.23" W	Drop Point	DP-9	41° 59' 6.35" N	123° 3' 8.84" W	Repeater	CMO 5	42° 0' 6.68" N	123° 18' 75.5" W
Drop Point	DP-41	42° 7' 4.98" N	123° 20' 57.2" W	Drop Point	DP-41	41° 59' 6.35" N	123° 3' 8.84" W	Fire Location	Applegate	42° 2' 3.51" N	123° 19' 12.7" W
Drop Point	DP-20	42° 6' 2.49" N	123° 4' 33.9" W	Drop Point	DP-20	41° 58' 3.81" N	123° 26' 9.13" W	Repeater	RAW 10	41° 58' 10.4" N	123° 13' 71.0" W
Drop Point	DP-23	42° 5' 8.18" N	123° 9' 82.2" W	Drop Point	DP-23	42° 5' 8.18" N	123° 9' 82.2" W	Helispot	Other	42° 0' 6.68" N	123° 16' 31.7" W
Drop Point	DP-25	42° 5' 0.69" N	123° 18' 6.66" W	Drop Point	DP-25	42° 5' 0.69" N	123° 18' 6.66" W	Helispot	Other	42° 0' 6.68" N	123° 16' 31.7" W
Drop Point	DP-20	42° 1' 3.49" N	123° 13' 4.9" W	Drop Point	DP-20	42° 1' 3.49" N	123° 13' 4.9" W	Helispot	Other	42° 0' 6.68" N	123° 16' 31.7" W



- Helispot
- Drop Point
- Landmark
- Lookout
- Mobile Weather Unit
- Water Source
- Value at Risk
- Hazard Road Impassable
- Division Break
- Uncontrolled Fire Edge
- Completed Line
- Completed Dozer Line
- Completed Hand Line
- Road as Completed Line
- Pacific Crest Trail
- Forest Boundary
- Inventory Roadless Area
- Private and State
- Botanical Areas
- Eclipse Complex Poly
- Wilderness
- Timber Sale

Incident Name	GIS Acres
Abney	32,558.0
Bear Wallow	0.1
Bigelow	71.2
Burnt Peak	4,147.0
Creedence	2,093.0
Knox	494.0
Lime Gulch	3.9
Overview	0.1
Slick Rock	0.1
Steamboat	6.2
Whiskey Ridge	0.2
Eclipse Complex Poly	39,373.8

As of: 10/15/17 14:37

BRANCH IV (ECLIPSE)

