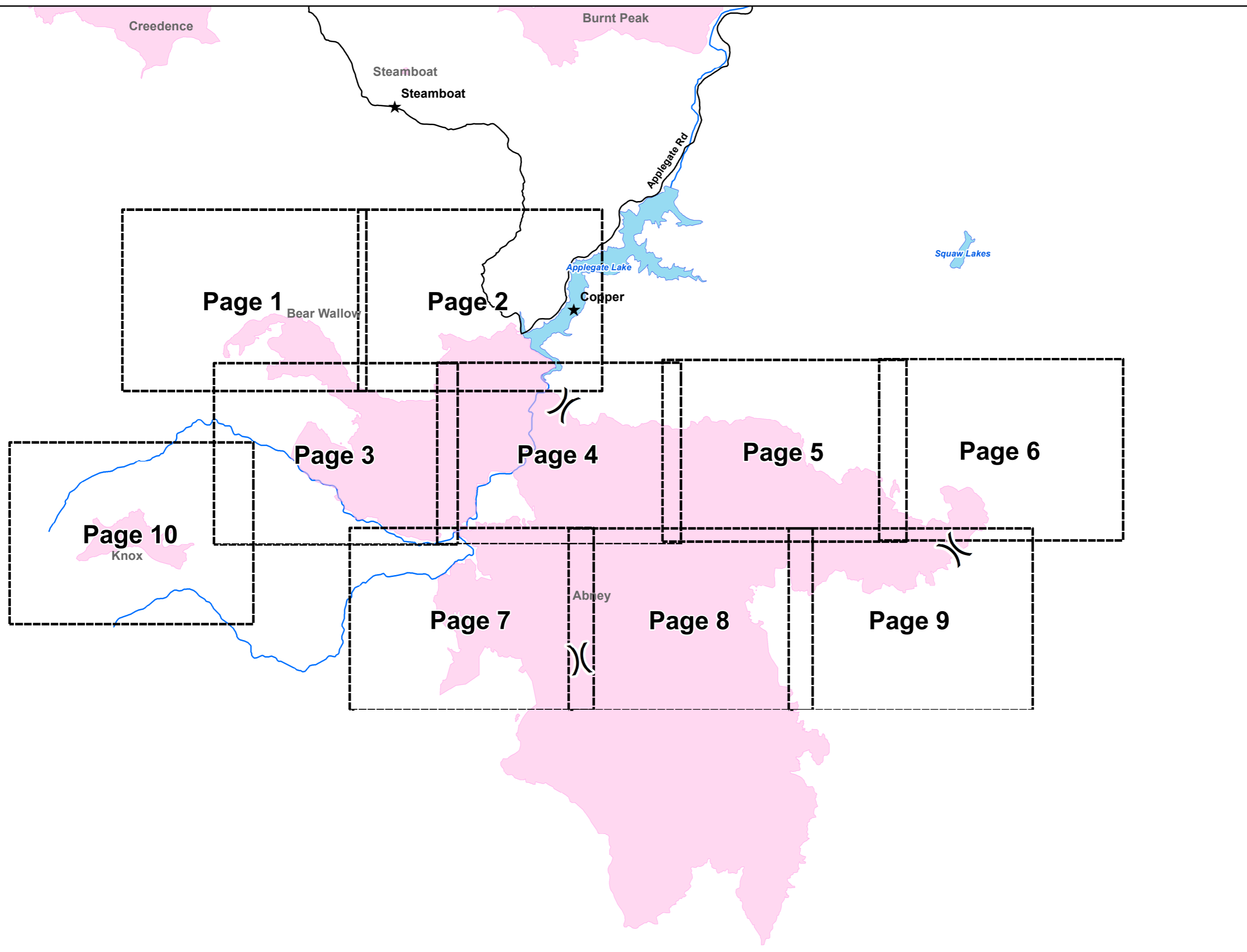
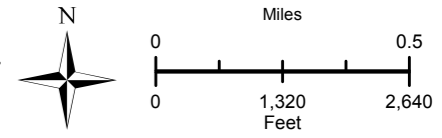
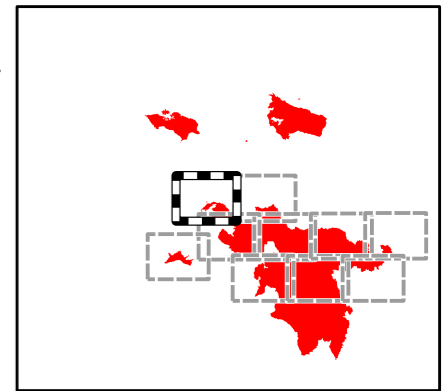
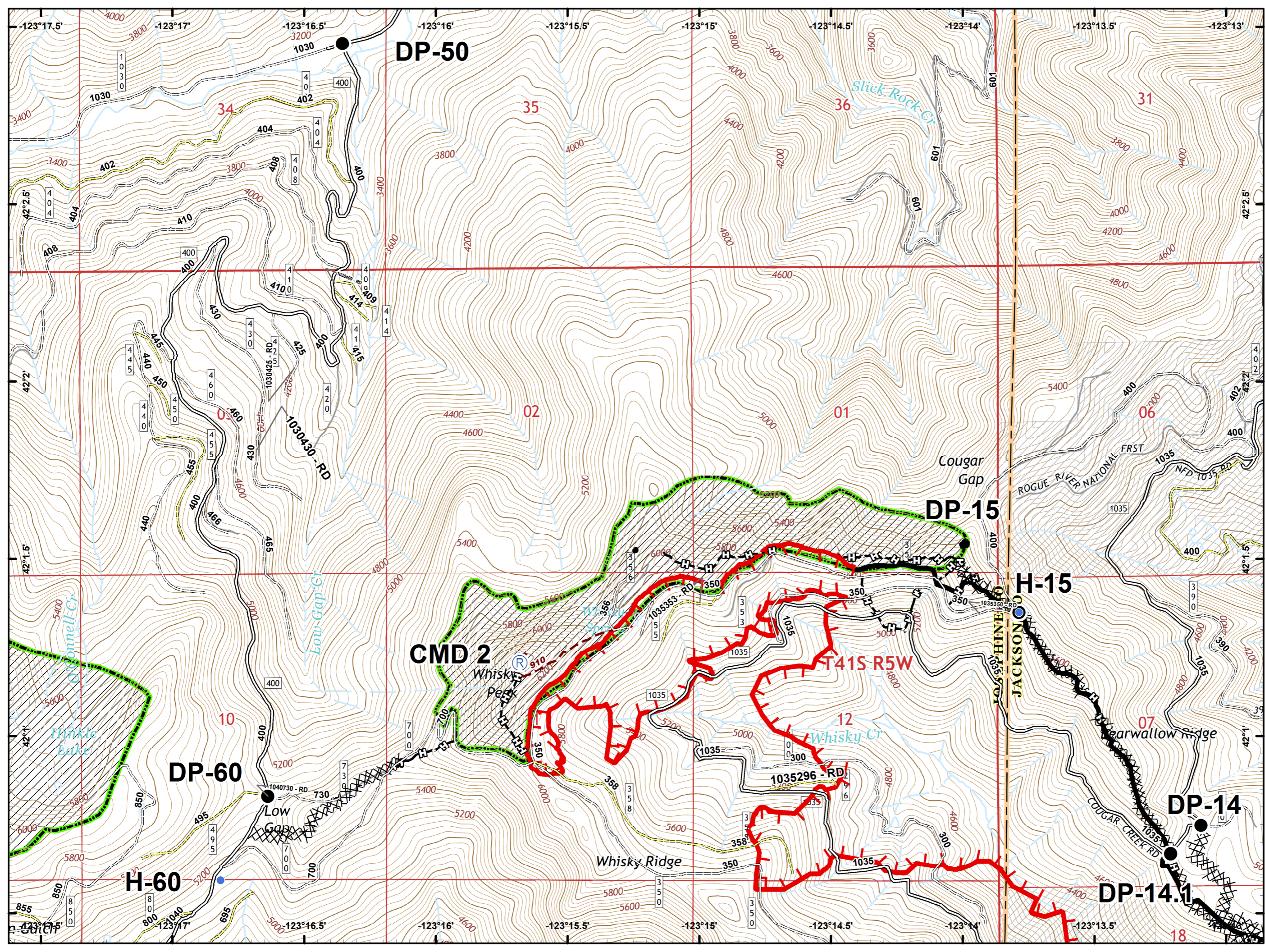


**Miller Complex
OR-RSF-000647
Rogue River Siskiyou
National Forest
October 16, 2017**

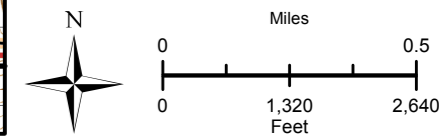
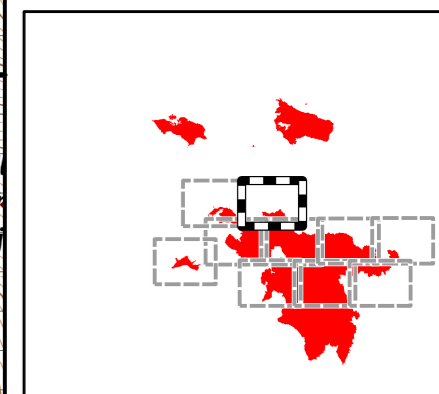
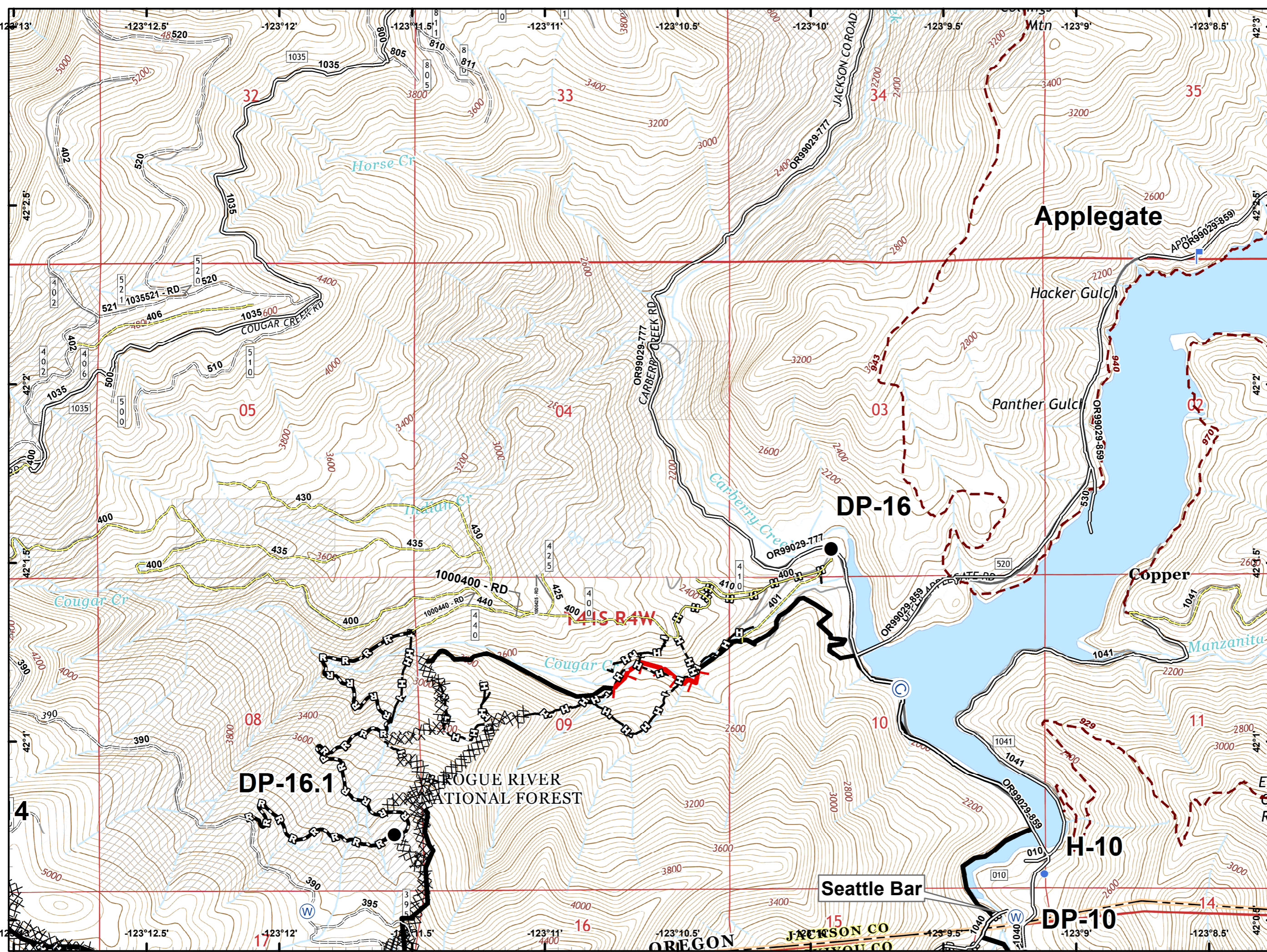
- ★ Towns
- ☐ Map Index Pages
- Fire Area



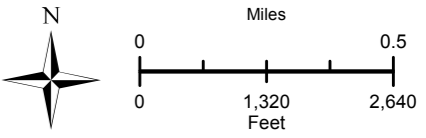
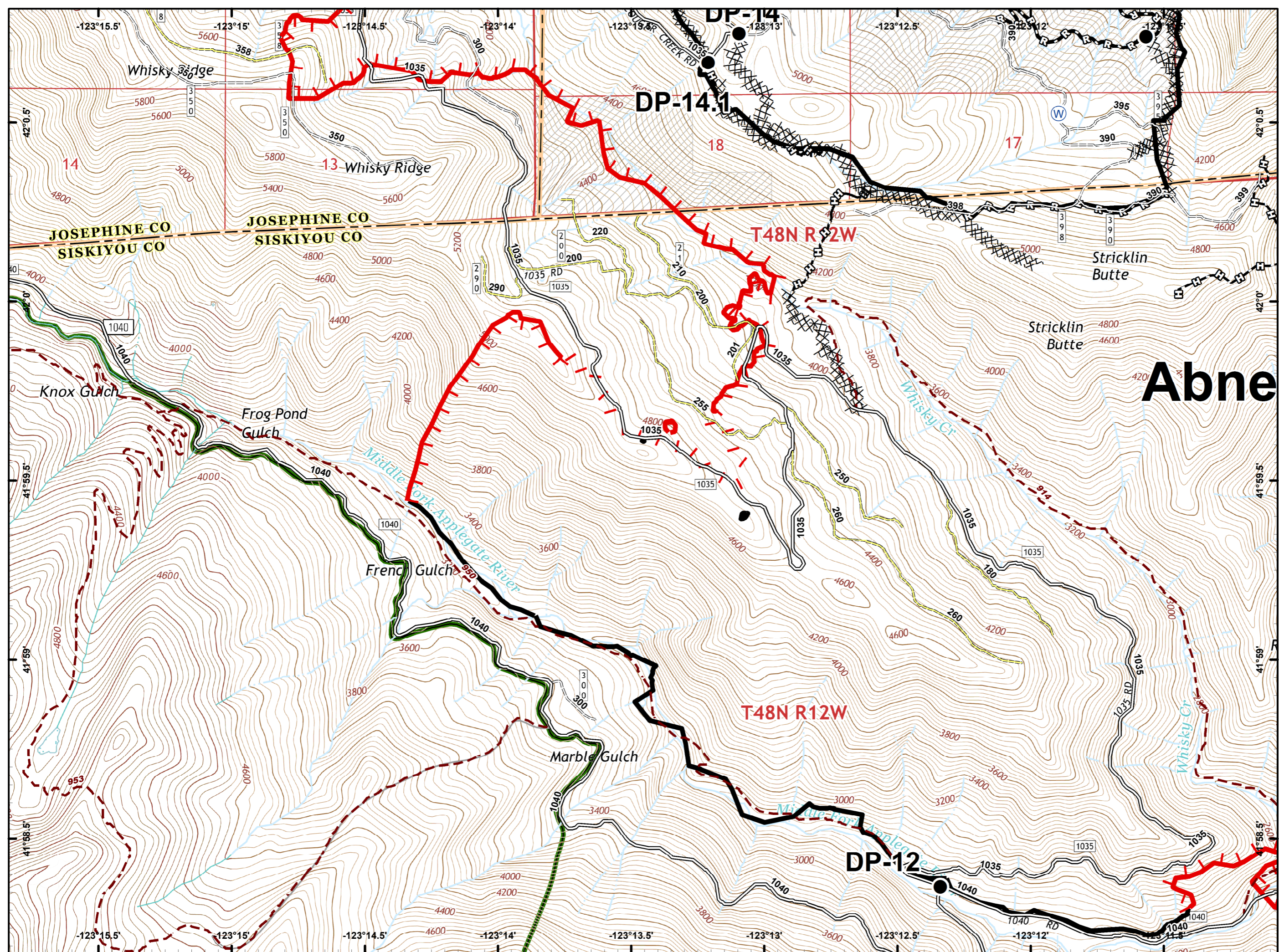
- Drop Point
- Helispot
- Ⓡ Repeater
- 🔴 Uncontrolled Fire Edge
- ⚫ Completed Line
- ⚫ Completed Dozer Line
- ⚫ Completed Hand Line
- ⚫ Private and State



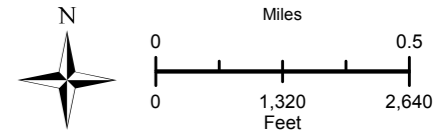
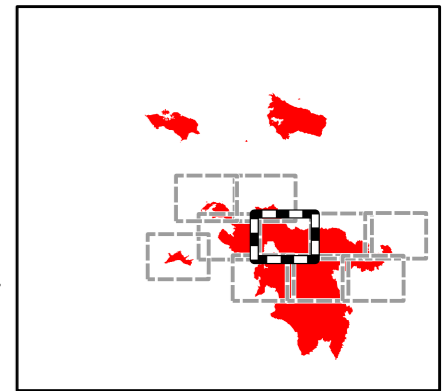
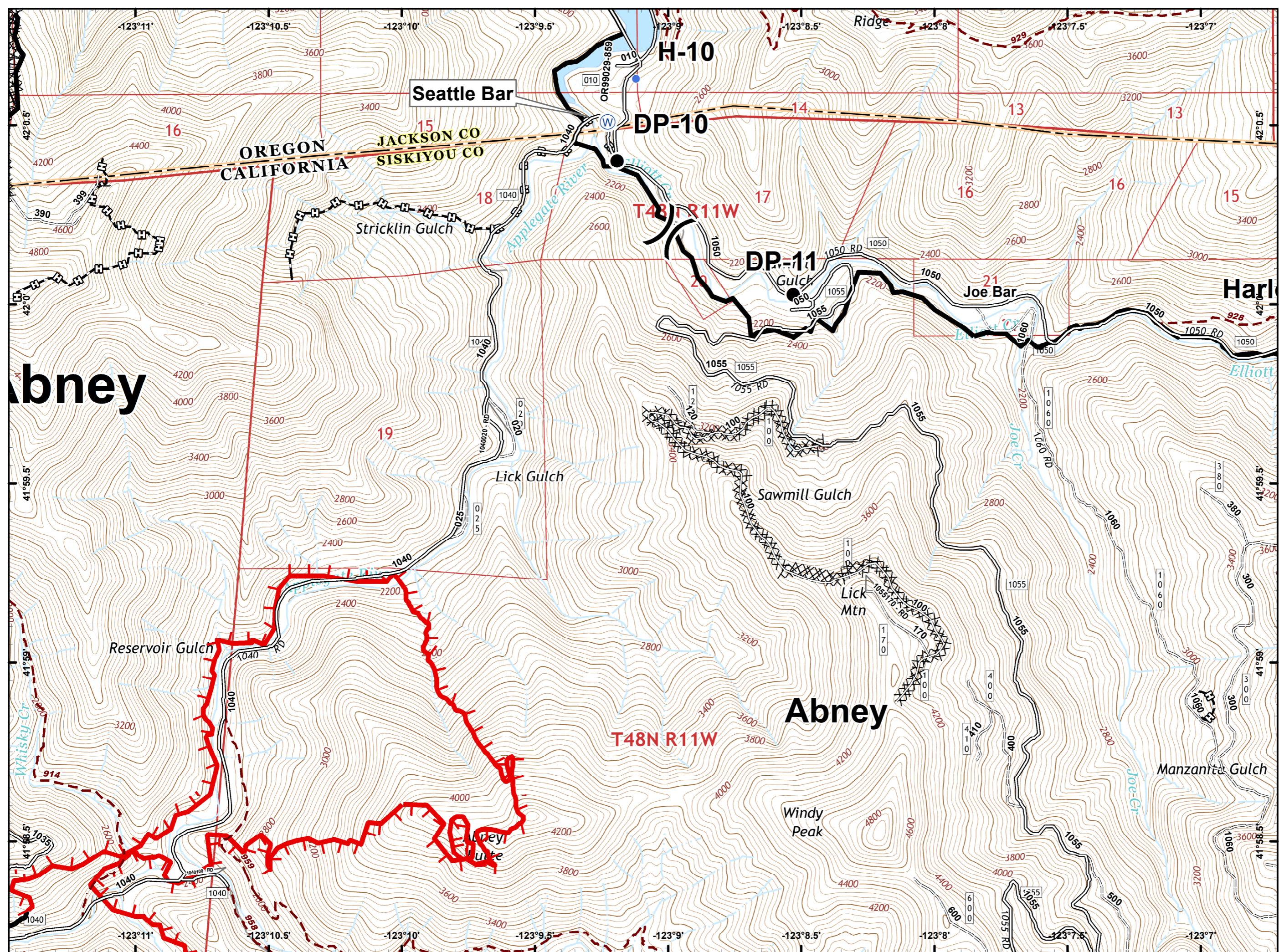
- Ⓒ Camp
- Drop Point
- Helispot
- ⌚ Lookout
- Ⓜ Water Source
- ⚠ Value at Risk
- 🔴 Uncontrolled Fire Edge
- ⚫ Completed Line
- ⚡ Completed Dozer Line
- ⚡ Completed Hand Line
- 🛣 Road as Completed Line
- ⚡ Private and State



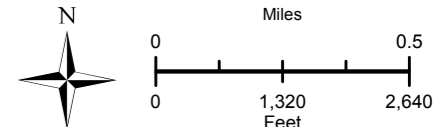
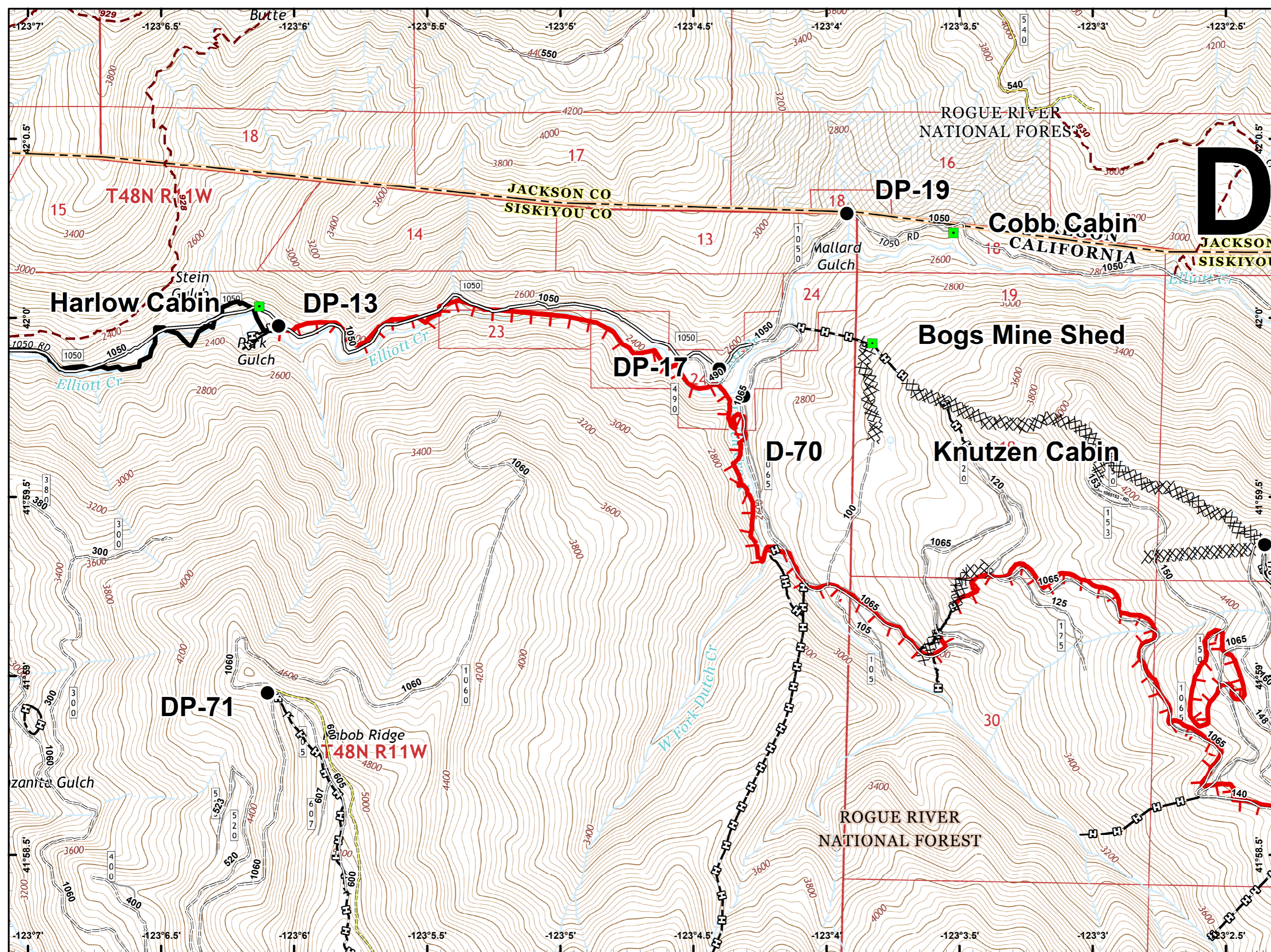
- Drop Point
- Ⓜ Water Source
- 🔴 Uncontrolled Fire Edge
- ⚫ Completed Line
- ⚫ Completed Dozer Line
- ⚫ Completed Hand Line
- 🛣 Road as Completed Line
- 🌿 Wilderness
- 🏠 Private and State



- Drop Point
- Helispot
- Ⓜ Water Source
- ⚠ Value at Risk
- ⎓ Division Break
- 🔴 Uncontrolled Fire Edge
- ⚫ Completed Line
- ⚡ Completed Dozer Line
- ⚡ Completed Hand Line
- 🛣 Road as Completed Line
- ⚡ Private and State

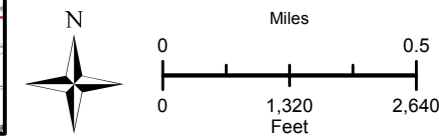
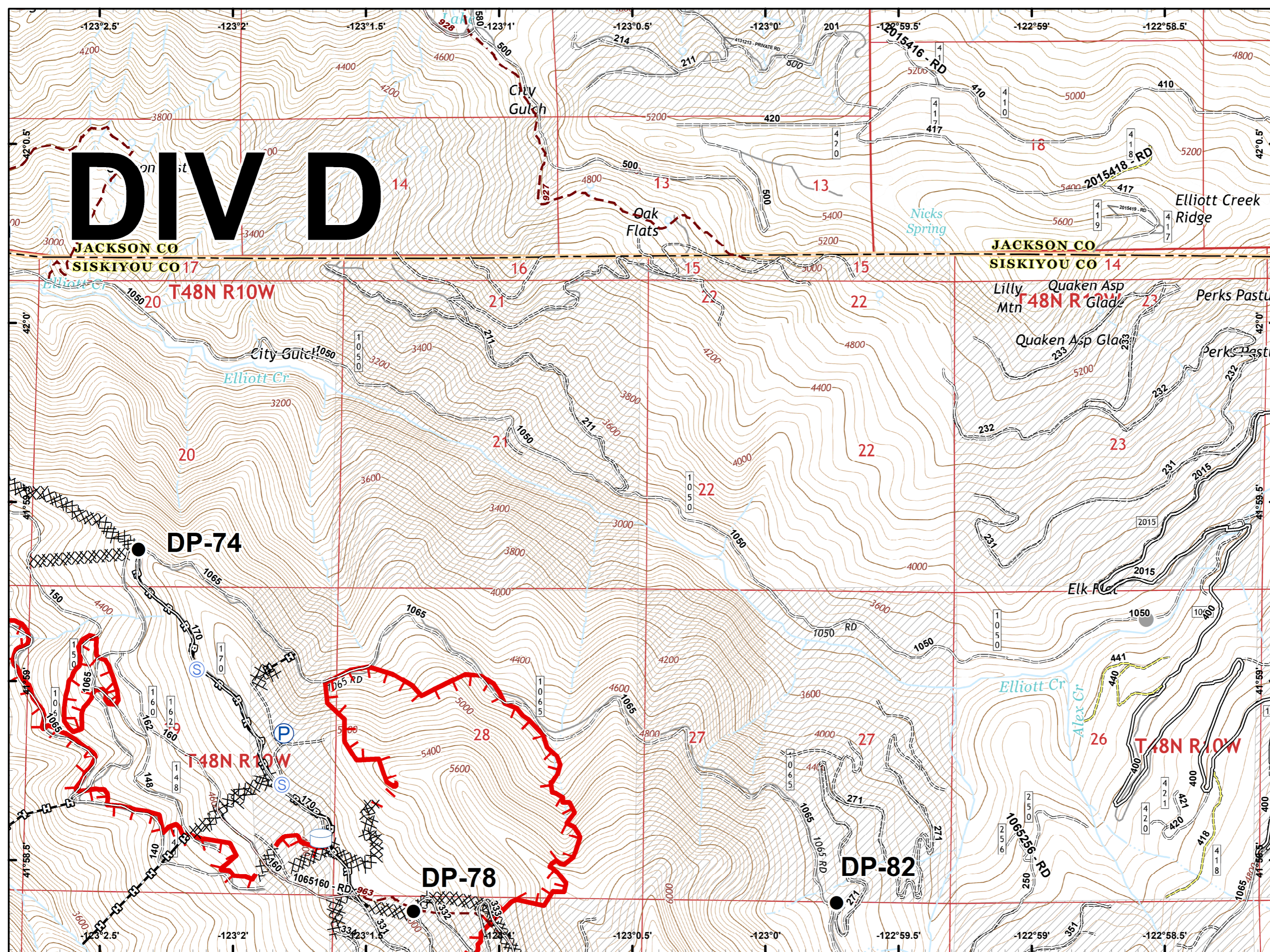


- Drop Point
- Landmark
- 🔴 Uncontrolled Fire Edge
- ⚡ Completed Line
- ⚡ Completed Dozer Line
- ⚡ Completed Hand Line
- ⚡ Road as Completed Line
- ⚡ Private and State

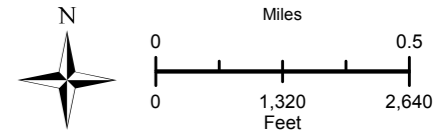
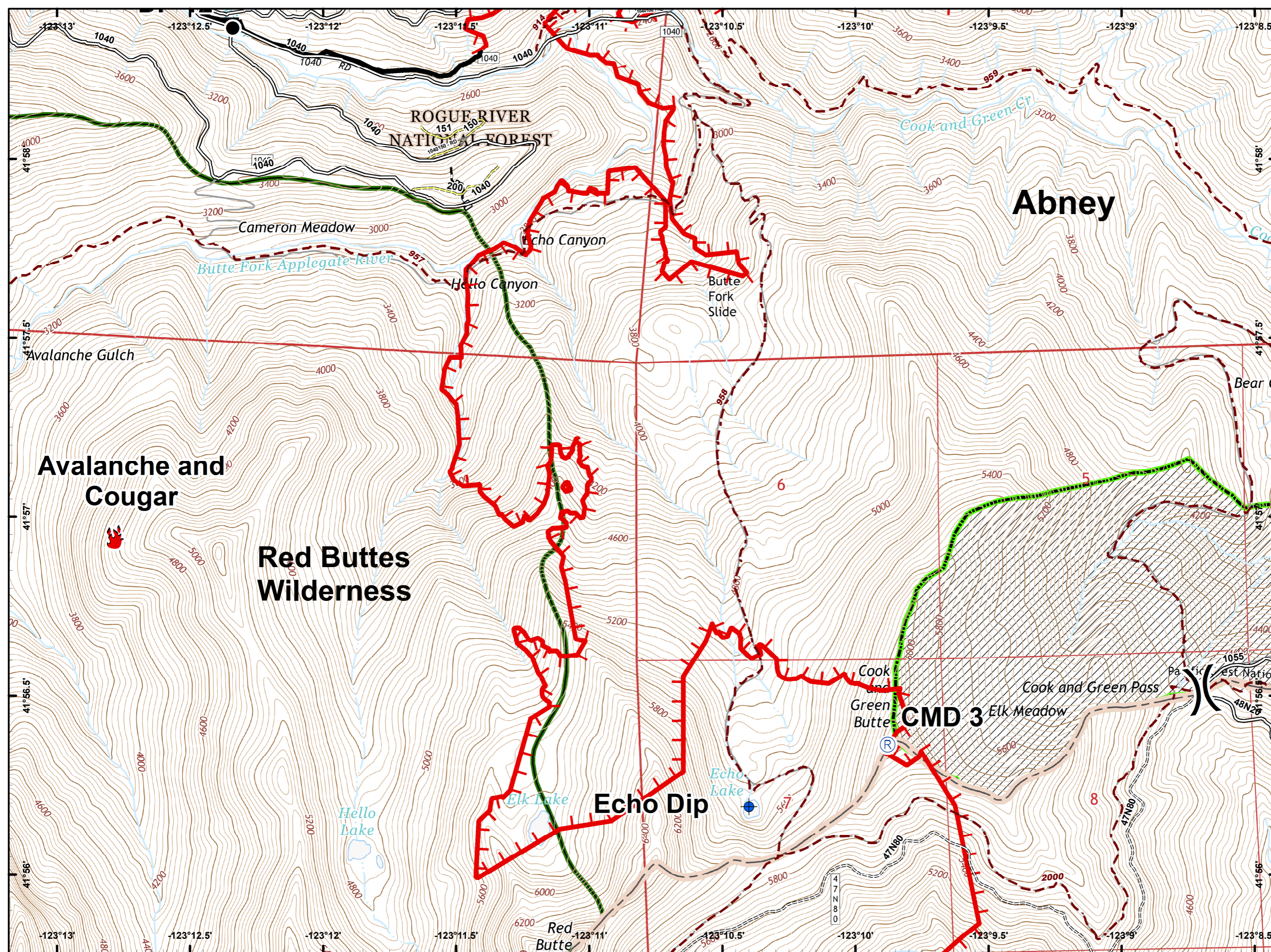


- Drop Point
- Ⓟ Pump
- Ⓢ Staging Area
- Ⓜ Water Tank
- Other
- 🔴 Uncontrolled Fire Edge
- ⓧ Completed Dozer Line
- Ⓜ Completed Hand Line
- 🛣 Road as Completed Line
- Ⓜ Private and State

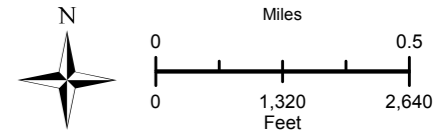
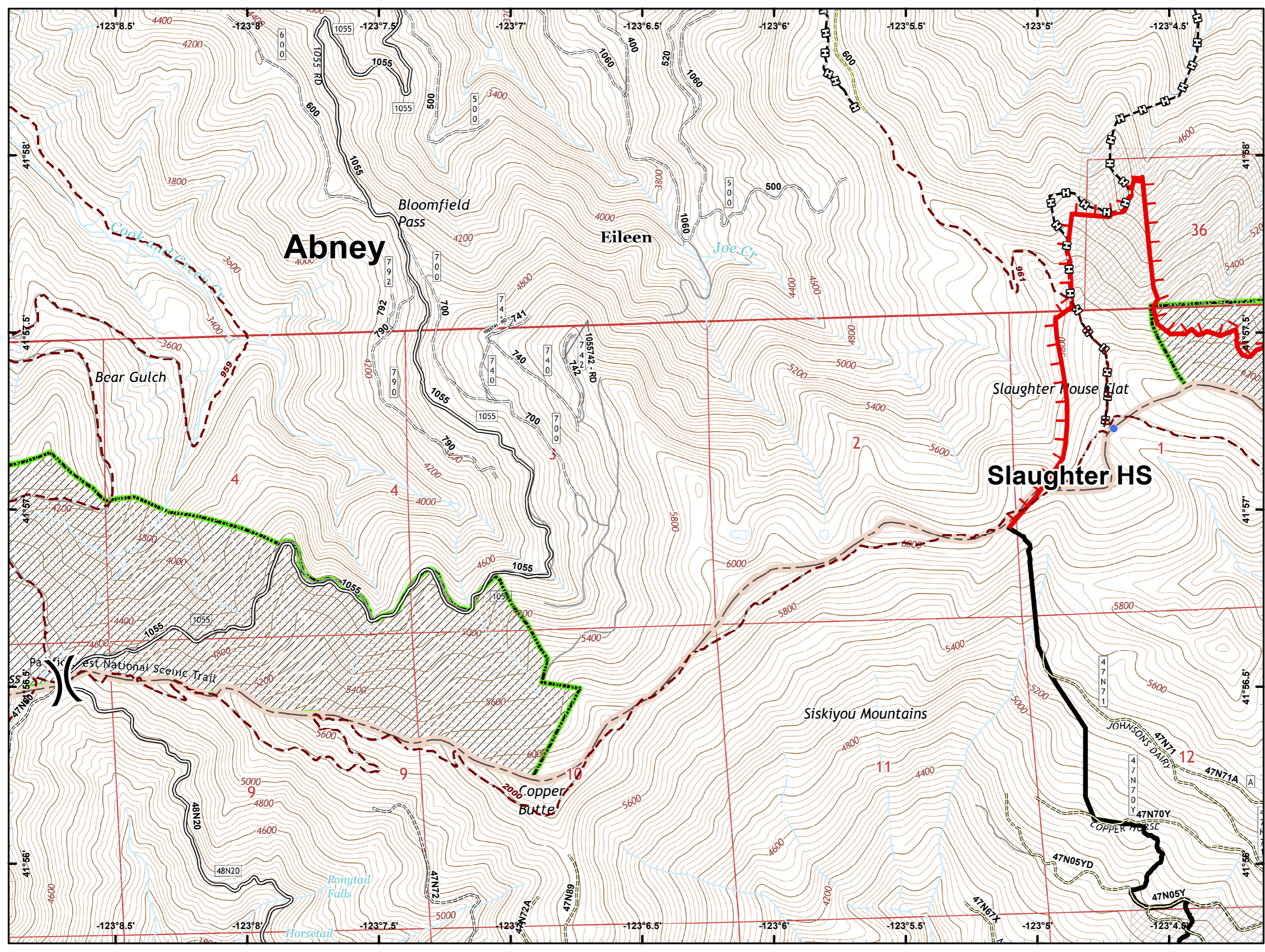
DIVD



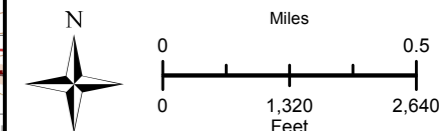
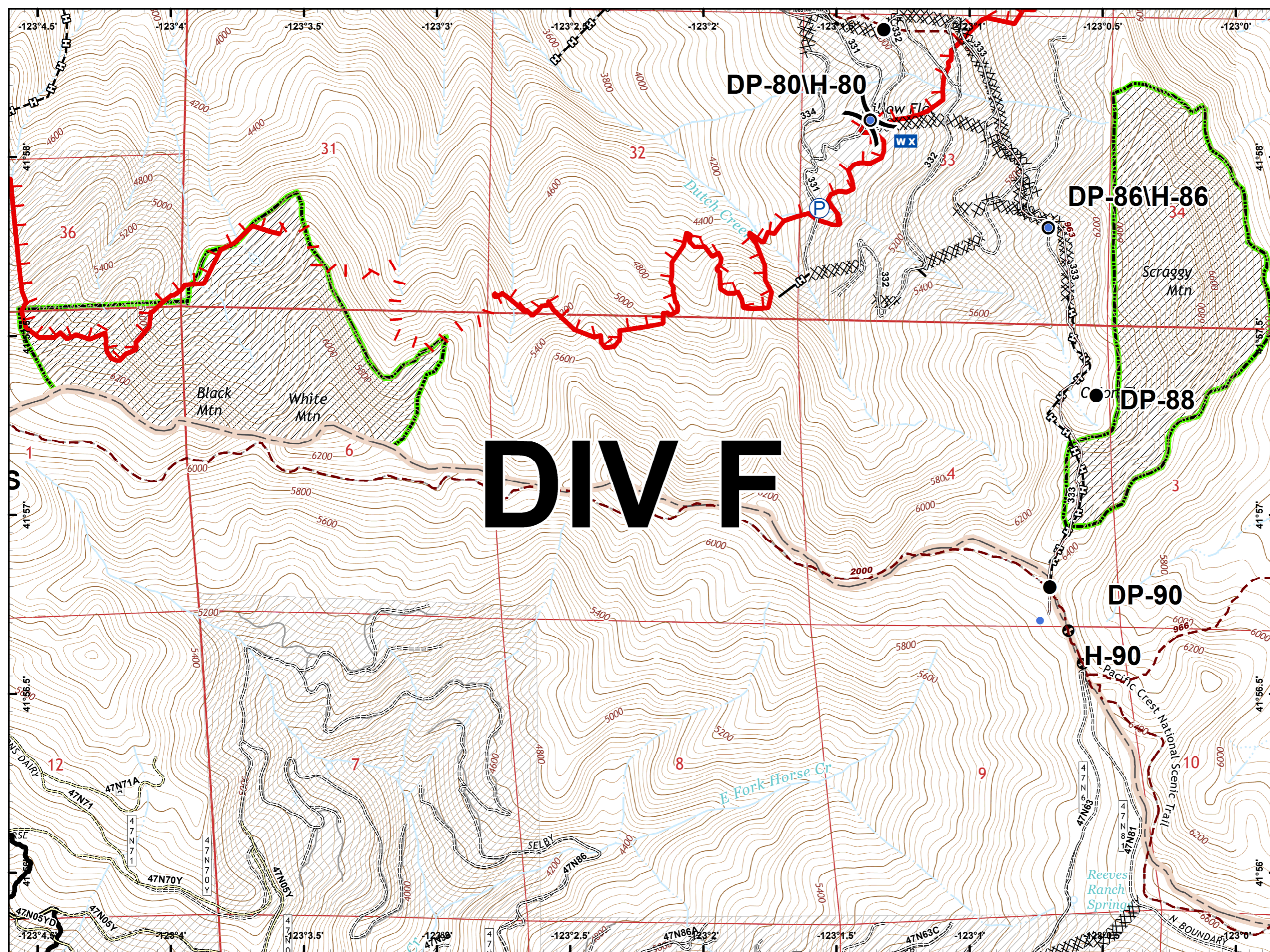
-  Dip Site
-  Drop Point
-  Fire Location
-  Repeater
-  Division Break
-  Uncontrolled Fire Edge
-  Completed Line
-  Completed Hand Line
-  Wilderness






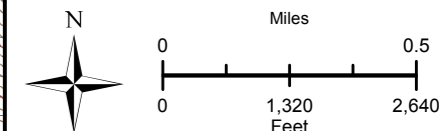
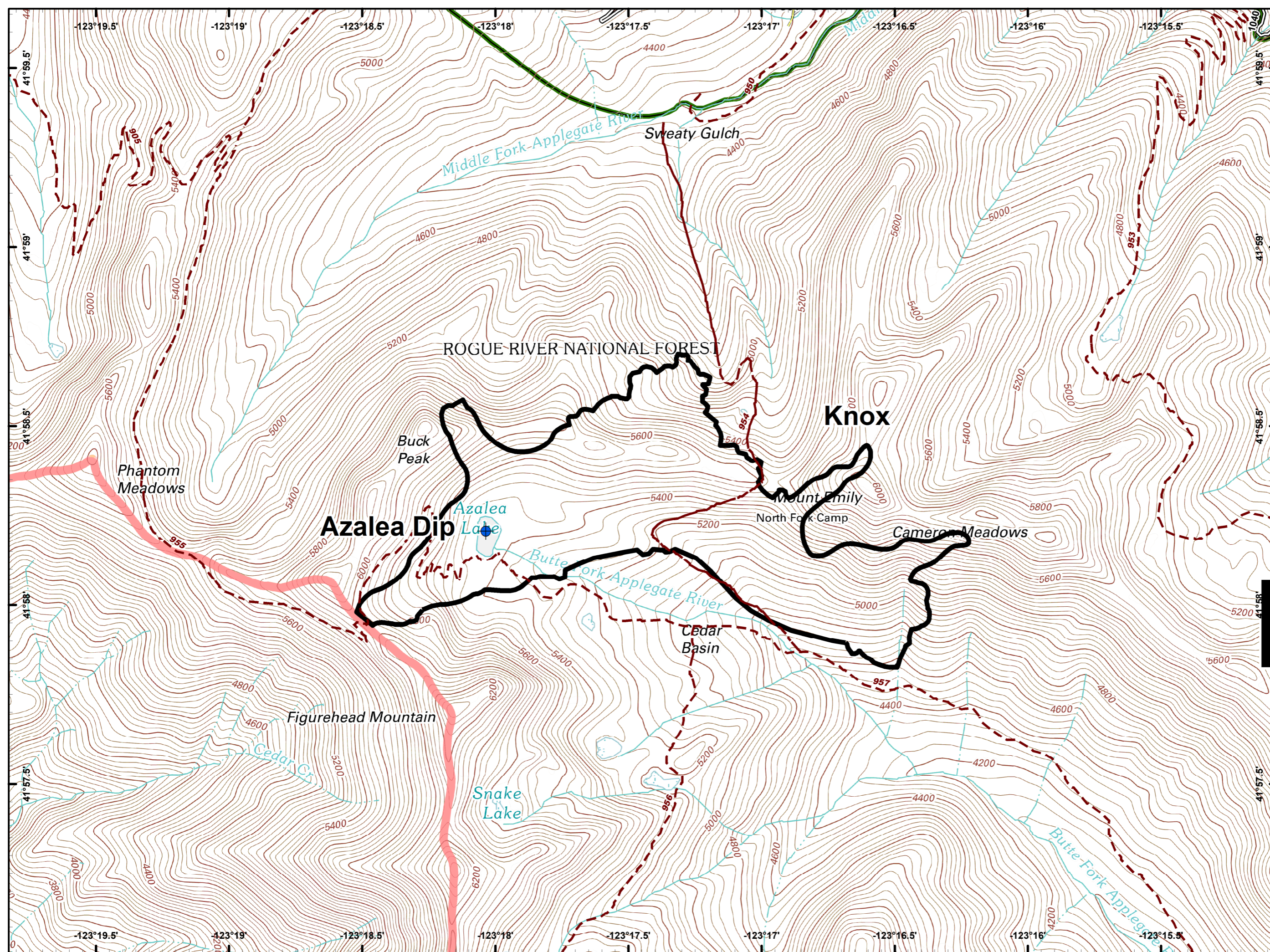
- Helispot
- ⎓ Division Break
- 🔴 Uncontrolled Fire Edge
- ⚫ Completed Line
- 🔗 Completed Hand Line



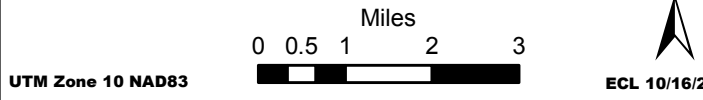
- Drop Point
- Helispot
- WX Mobile Weather Unit
- P Pump
-) Division Break
- Uncontrolled Fire Edge
- Completed Line
- Completed Dozer Line
- Completed Hand Line
- Road as Completed Line
- Other



-  Dip Site
-  Completed Line
-  Wilderness



MILLER COMPLEX OR-RSF-000647 TRANSPORTATION MAP 10/16/2017



- Siskiyou Mountains Ranger District
- Fire Areas
- Administrative Forest Boundary

