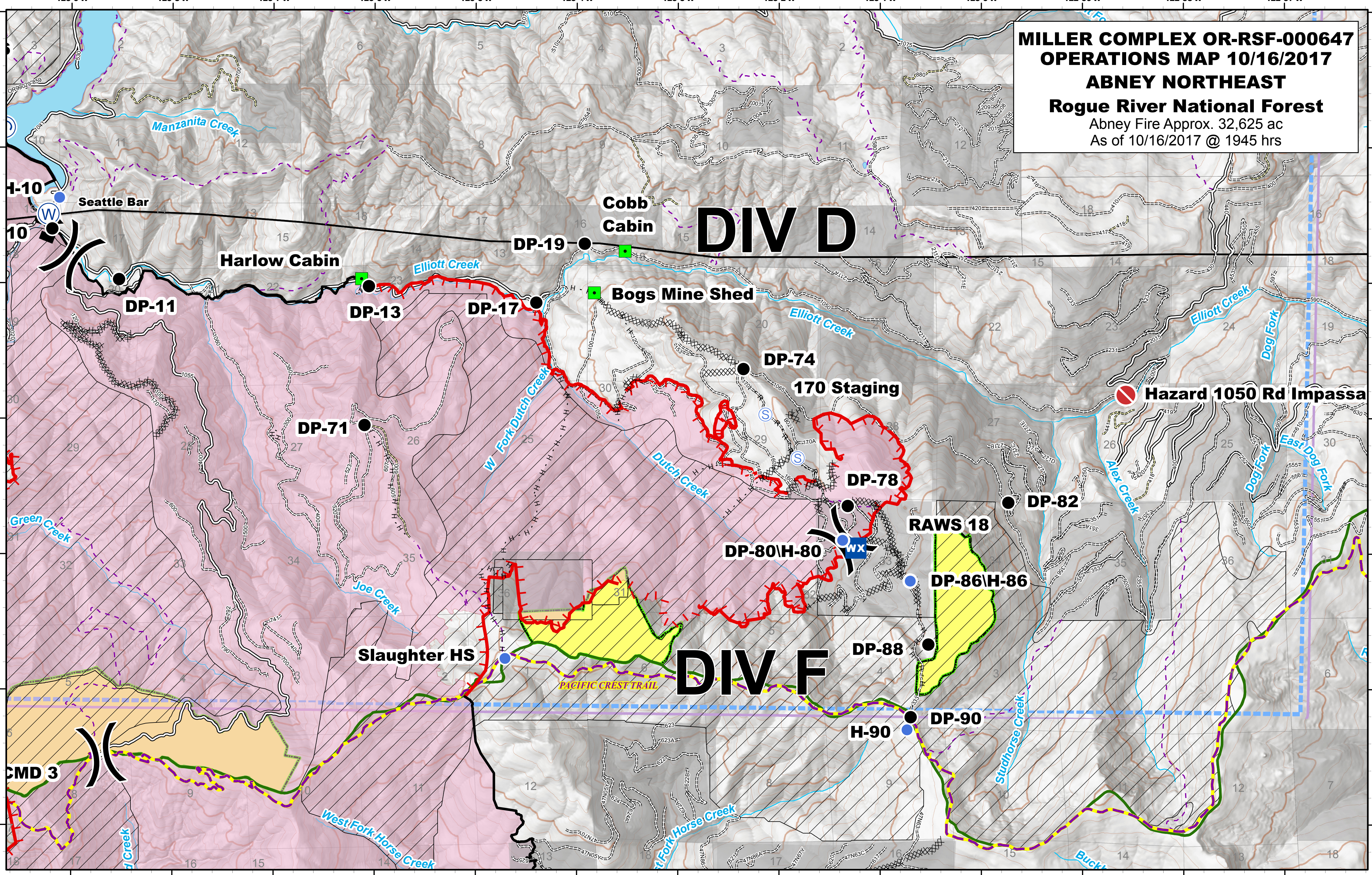


MILLER COMPLEX OR-RSF-000647
OPERATIONS MAP 10/16/2017
ABNEY NORTHEAST
Rogue River National Forest
 Abney Fire Approx. 32,625 ac
 As of 10/16/2017 @ 1945 hrs



Northwest IMT 6 GIS Unit
 OPS_Abney_NE_2017_MillerComplex_ORRSF000647_ArchC_land.mxd
 October 16, 2017, 1945 hrs
 NAD 1983 UTM Zone 10N

FeatureCategory	Label	Lat	Long	FeatureCategory	Label	Lat	Long	FeatureCategory	Label	Lat	Long
Dip Site	Miller Dip	42° 3.867' N	123° 18.195' W	Drop Point	DP-18	42° 4.111' N	123° 10.117' W	Helispot	Slaughter HS	41° 57.230' N	123° 4.710' W
Dip Site	Echo Dip	41° 56.190' N	123° 10.400' W	Drop Point	DP-14.1	42° 0.668' N	123° 13.210' W	Helispot	H-15	42° 1.349' N	123° 13.786' W
Dip Site	Lily Dip	41° 55.300' N	123° 11.150' W	Drop Point	DP-11	41° 0.037' N	123° 8.580' W	Helispot	H-50	42° 6.043' N	123° 19.552' W
Dip Site	Azalea Dip	41° 58.207' N	123° 18.036' W	Drop Point	DP-13	41° 59.978' N	123° 1.372' W	Helispot	H-80	41° 58.104' N	123° 1.372' W
Dip Site	Lonesome Dip	41° 56.976' N	123° 17.839' W	Drop Point	DP-17	41° 59.857' N	123° 4.402' W	Helispot	H-86	41° 57.803' N	123° 0.704' W
Dip Site	Bolan Dip	42° 1.319' N	123° 27.570' W	Drop Point	DP-19	42° 0.292' N	123° 3.923' W	Helispot	H-90	41° 56.705' N	123° 0.735' W
Drop Point	DP-10	42° 0.400' N	123° 9.191' W	Drop Point	DP-40	42° 0.830' N	123° 16.638' W	Helispot	H-10	42° 0.630' N	123° 9.100' W
Drop Point	DP-28	42° 5.145' N	123° 9.245' W	Drop Point	DP-50	42° 2.953' N	123° 16.355' W	Helispot	H-60	42° 0.593' N	123° 16.817' W
Drop Point	DP-25	42° 7.031' N	123° 9.822' W	Drop Point	DP-90	41° 56.798' N	123° 0.698' W	Incident Command Point	Incident Command	4014.058' N	123° 3.943' W
Drop Point	DP-33	42° 7.917' N	123° 10.072' W	Drop Point	DP-82	41° 58.381' N	123° 59.783' W	Landmark	Bogs Mine Shed	41° 58.920' N	123° 3.828' W
Drop Point	DP-21	42° 6.982' N	123° 7.703' W	Drop Point	DP-74	41° 59.368' N	123° 2.354' W	Landmark	Harlow Cabin	42° 0.032' N	123° 6.311' W
Drop Point	DP-38	42° 6.649' N	123° 18.181' W	Drop Point	DP-78	41° 58.357' N	123° 1.322' W	Landmark	Cobb Cabin	42° 3.523' N	123° 3.523' W
Drop Point	DP-32	42° 6.212' N	123° 14.133' W	Drop Point	DP-80	41° 58.104' N	123° 1.372' W	Lockout	Aggligate	42° 2.357' N	123° 8.547' W
Drop Point	DP-30	42° 5.548' N	123° 11.698' W	Drop Point	DP-86	41° 57.803' N	123° 0.704' W	Repeater	CMD 1	41° 57.785' N	123° 9.088' W
Drop Point	DP-35	42° 4.944' N	123° 17.252' W	Drop Point	DP-88	41° 57.334' N	123° 0.524' W	Repeater	CMD 2	41° 1.306' N	123° 15.681' W
Drop Point	DP-33	42° 6.398' N	123° 16.306' W	Drop Point	DP-71	41° 58.953' N	123° 6.100' W	Repeater	CMD 3	41° 56.363' N	123° 9.880' W
Drop Point	DP-14	42° 0.349' N	123° 11.095' W	Drop Point	DP-16.1	42° 0.140' N	123° 11.567' W	Repeater	CMD 4	42° 2.616' N	123° 53.449' W
Drop Point	DP-16	42° 1.539' N	123° 9.923' W	Drop Point	D-70	41° 59.635' N	123° 3.837' W	Repeater	CMD 5	42° 6.595' N	123° 18.755' W
Drop Point	DP-41	42° 7.498' N	123° 20.572' W	Fire Location	Avalanche Cougar	41° 56.945' N	123° 12.779' W	Slng Site	Slng 1	42° 2.210' N	123° 19.587' W
Drop Point	DP-20	42° 6.249' N	123° 5.522' W	Fire Location	Redwood	42° 1.222' N	123° 26.913' W	Slng Site	Slng 2	42° 6.955' N	123° 19.127' W
Drop Point	DP-12	41° 58.365' N	123° 12.339' W	Helispot	Cave Junction	40° 6.000' N	123° 41.002' W	Mobile Weather Unit	RAWS 18	41° 58.1064' N	123° 1.37902' W
Drop Point	DP-29	42° 5.618' N	123° 7.924' W	Helispot	Applecore	42° 3.394' N	123° 7.007' W	Other	Hazard Road Impassable	4014.1751' N	122° 58.5678' W
Drop Point	DP-37	42° 5.069' N	123° 18.666' W	Helispot	Hamilton	42° 14.054' N	123° 3.704' W				
Drop Point	DP-15/H-15	42° 1.349' N	123° 13.786' W	Helispot	H-41	42° 7.460' N	123° 20.660' W				

Division Break
 Helispot
 Drop Point
 Landmark
 Lookout
 Mobile Weather Unit
 Pacific Crest Trail
 Forest Boundary
 Inventory Roadless Area
 Value at Risk
 Hazard Road Impassable
 Uncontrolled Fire Edge
 Private and State
 Botanical Areas
 Eclipse Complex
 Wilderness
 Timber Sale
 Completed Line
 Completed Dozer Line
 Completed Hand Line
 Road as Completed Line
 TFR Boundary