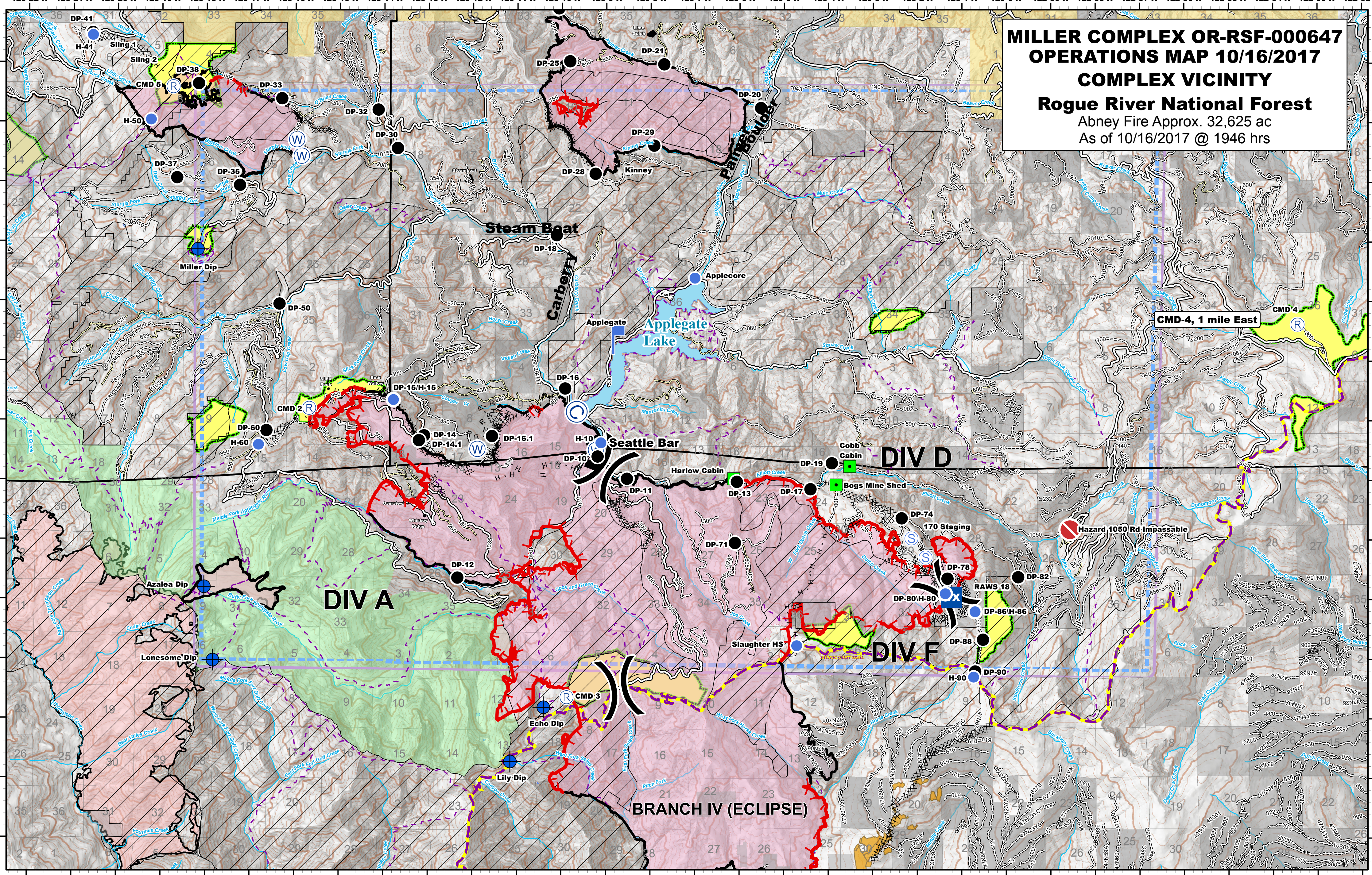


MILLER COMPLEX OR-RSF-000647
OPERATIONS MAP 10/16/2017
COMPLEX VICINITY
Rogue River National Forest
 Abney Fire Approx. 32,625 ac
 As of 10/16/2017 @ 1946 hrs



Feature/Category	Label	Lat	Long	Feature/Category	Label	Lat	Long	Feature/Category	Label	Lat	Long	
Drop Point	Miller Dip	42° 3.867' N	123° 18.195' W	Drop Point	DP-18	42° 4.111' N	123° 10.117' W	Drop Point	Slaughter HS	41° 57.230' N	123° 4.710' W	
Drop Point	Echo Dip	41° 56.190' N	123° 10.400' W	Drop Point	DP-13	42° 0.668' N	123° 13.210' W	Drop Point	H-15	42° 1.349' N	123° 13.786' W	
Drop Point	Lily Dip	41° 55.280' N	123° 11.150' W	Drop Point	DP-11	42° 0.027' N	123° 8.580' W	Drop Point	H-50	42° 0.043' N	123° 19.152' W	
Drop Point	Azalea Dip	41° 58.207' N	123° 18.036' W	Drop Point	DP-13	41° 59.978' N	123° 1.056' W	Drop Point	H-80	41° 58.104' N	123° 1.372' W	
Drop Point	Lonesome Dip	41° 56.976' N	123° 17.839' W	Drop Point	DP-17	41° 59.857' N	123° 4.400' W	Drop Point	H-86	41° 57.803' N	123° 0.704' W	
Drop Point	Bolan Dip	42° 1.319' N	123° 27.570' W	Drop Point	DP-19	42° 0.292' N	123° 3.929' W	Drop Point	H-90	41° 56.705' N	123° 0.735' W	
Drop Point	DP-10	42° 0.400' N	123° 9.191' W	Drop Point	DP-40	42° 0.830' N	123° 16.638' W	Drop Point	H-10	42° 0.630' N	123° 9.100' W	
Drop Point	DP-28	42° 5.145' N	123° 9.245' W	Drop Point	DP-50	42° 2.953' N	123° 16.355' W	Drop Point	H-60	42° 0.933' N	123° 16.817' W	
Drop Point	DP-25	42° 7.031' N	123° 9.822' W	Drop Point	DP-90	41° 56.798' N	123° 0.698' W	Drop Point	Incident Command	40014.058' N	123° 3.943' W	
Drop Point	DP-33	42° 7.927' N	123° 13.092' W	Drop Point	DP-82	41° 58.381' N	123° 59.733' W	Drop Point	Bogs Mine Shed	41° 58.920' N	123° 3.828' W	
Drop Point	DP-21	42° 6.982' N	123° 7.703' W	Drop Point	DP-74	41° 58.368' N	123° 2.354' W	Drop Point	Harlow Cabin	42° 0.032' N	123° 6.311' W	
Drop Point	DP-38	42° 6.649' N	123° 18.181' W	Drop Point	DP-78	41° 58.357' N	123° 1.322' W	Drop Point	Cobb Cabin	42° 0.032' N	123° 6.311' W	
Drop Point	DP-32	42° 6.212' N	123° 14.133' W	Drop Point	DP-80	41° 58.104' N	123° 1.372' W	Drop Point	Applegate	42° 2.357' N	123° 8.547' W	
Drop Point	DP-30	42° 5.568' N	123° 13.698' W	Drop Point	DP-86	41° 57.803' N	123° 0.704' W	Drop Point	CMD 2	42° 1.785' N	123° 9.098' W	
Drop Point	DP-35	42° 4.944' N	123° 17.252' W	Drop Point	DP-88	41° 57.534' N	123° 0.524' W	Drop Point	Repeater	CMD 2	42° 1.206' N	123° 15.681' W
Drop Point	DP-33	42° 6.388' N	123° 16.308' W	Drop Point	DP-71	41° 58.953' N	123° 6.100' W	Drop Point	Repeater	CMD 3	41° 56.363' N	123° 9.880' W
Drop Point	DP-16	42° 0.349' N	123° 13.092' W	Drop Point	DP-16.1	42° 0.140' N	123° 11.567' W	Drop Point	Repeater	CMD 4	42° 2.616' N	123° 53.449' W
Drop Point	DP-41	42° 1.539' N	123° 9.923' W	Drop Point	DP-10	42° 0.630' N	123° 9.100' W	Drop Point	Repeater	CMD 5	42° 6.995' N	123° 18.755' W
Drop Point	DP-20	42° 7.498' N	123° 20.572' W	Drop Point	DP-10	42° 0.630' N	123° 9.100' W	Drop Point	Repeater	CMD 5	42° 6.995' N	123° 18.755' W
Drop Point	DP-12	41° 58.865' N	123° 12.339' W	Drop Point	DP-12	41° 58.865' N	123° 12.339' W	Drop Point	Repeater	CMD 5	42° 6.995' N	123° 18.755' W
Drop Point	DP-29	42° 5.618' N	123° 7.924' W	Drop Point	DP-29	42° 5.618' N	123° 7.924' W	Drop Point	Repeater	CMD 5	42° 6.995' N	123° 18.755' W
Drop Point	DP-37	42° 5.069' N	123° 18.666' W	Drop Point	DP-37	42° 5.069' N	123° 18.666' W	Drop Point	Repeater	CMD 5	42° 6.995' N	123° 18.755' W
Drop Point	DP-15/H-15	42° 1.349' N	123° 13.786' W	Drop Point	DP-15/H-15	42° 1.349' N	123° 13.786' W	Drop Point	Repeater	CMD 5	42° 6.995' N	123° 18.755' W

Northwest IMT 6 GIS Unit
October 16, 2017, 1946 hrs

0 0.5 1 3 4
Miles
1:72,000
200' Contours
1 in = 1.14 miles

	Division Break		Pacific Crest Trail		Private and State
	Helispot		Forest Boundary		Botanical Areas
	Drop Point		Inventory Roadless Area		Eclipse Complex
	Landmark		Water Source		Wilderness
	Lookout		Value at Risk		Timber Sale
	Mobile Weather Unit		Hazard Road Impassable		Completed Line
			Uncontrolled Fire Edge		Completed Dozer Line
			TFR Boundary		Completed Hand Line
					Road as Completed Line