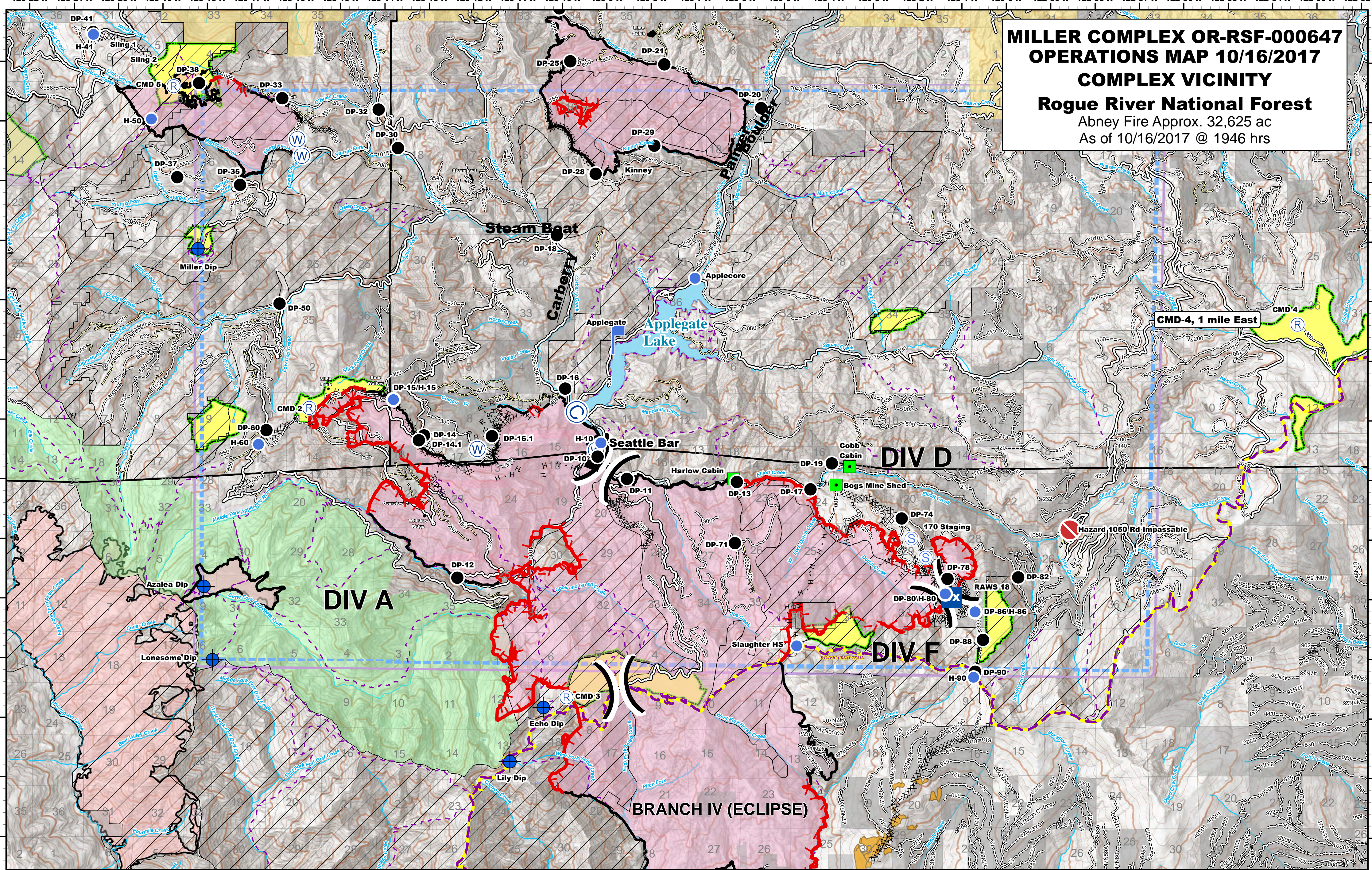


**MILLER COMPLEX OR-RSF-000647**  
**OPERATIONS MAP 10/16/2017**  
**COMPLEX VICINITY**  
 Rogue River National Forest  
 Abney Fire Approx. 32,625 ac  
 As of 10/16/2017 @ 1946 hrs






Northwest IMT 6 GIS Unit  
October 16, 2017, 1946 hrs

OPS\_Complex\_2017\_MillerComplex\_ORRSF000647\_Arch\_Cand\_l.mxd  
 NAD 1983 UTM Zone 10N

Feature/Category	Label	Lat	Long	Feature/Category	Label	Lat	Long	Feature/Category	Label	Lat	Long
Drop Point	Miller Dip	42° 3.867' N	123° 18.195' W	Drop Point	DP-18	42° 4.111' N	123° 10.117' W	Drop Point	Slaughter HS	41° 57.230' N	123° 4.710' W
Drop Point	Echo Dip	41° 56.190' N	123° 10.400' W	Drop Point	DP-14.1	42° 0.668' N	123° 13.210' W	Drop Point	H-15	42° 1.349' N	123° 13.786' W
Drop Point	Lily Dip	41° 55.380' N	123° 11.150' W	Drop Point	DP-11	42° 0.027' N	123° 8.580' W	Drop Point	H-50	41° 57.043' N	123° 19.157' W
Drop Point	Azalea Dip	41° 58.207' N	123° 18.036' W	Drop Point	DP-13	41° 59.978' N	123° 1.056' W	Drop Point	H-80	41° 58.104' N	123° 1.372' W
Drop Point	Lonesome Dip	41° 56.976' N	123° 17.839' W	Drop Point	DP-17	41° 59.857' N	123° 4.402' W	Drop Point	H-86	41° 57.803' N	123° 0.704' W
Drop Point	Bolan Dip	42° 1.319' N	123° 27.570' W	Drop Point	DP-19	42° 0.292' N	123° 3.923' W	Drop Point	H-90	41° 56.705' N	123° 0.735' W
Drop Point	DP-10	42° 0.400' N	123° 9.191' W	Drop Point	DP-40	42° 0.830' N	123° 16.638' W	Drop Point	H-10	42° 0.630' N	123° 9.100' W
Drop Point	DP-28	42° 5.145' N	123° 9.245' W	Drop Point	DP-50	42° 2.953' N	123° 16.355' W	Drop Point	H-60	42° 0.593' N	123° 16.817' W
Drop Point	DP-25	42° 7.031' N	123° 9.822' W	Drop Point	DP-90	41° 56.798' N	123° 0.698' W	Drop Point	Incident Command Point	4004.058' N	123° 3.943' W
Drop Point	DP-33	42° 7.917' N	123° 11.075' W	Drop Point	DP-82	41° 58.381' N	123° 59.733' W	Drop Point	Bogs Mine Shed	41° 56.920' N	123° 3.828' W
Drop Point	DP-21	42° 6.982' N	123° 7.703' W	Drop Point	DP-74	41° 58.368' N	123° 2.354' W	Drop Point	Harlow Cabin	42° 0.032' N	123° 6.311' W
Drop Point	DP-38	42° 6.649' N	123° 18.181' W	Drop Point	DP-78	41° 58.357' N	123° 1.322' W	Drop Point	Cobb Cabin	42° 1.785' N	123° 3.523' W
Drop Point	DP-32	42° 6.212' N	123° 14.133' W	Drop Point	DP-80	41° 58.104' N	123° 1.372' W	Drop Point	Applegate	42° 2.357' N	123° 8.547' W
Drop Point	DP-30	42° 5.568' N	123° 11.698' W	Drop Point	DP-86	41° 57.803' N	123° 0.704' W	Drop Point	CMD 2	42° 1.206' N	123° 15.681' W
Drop Point	DP-35	42° 4.944' N	123° 17.252' W	Drop Point	DP-88	41° 57.534' N	123° 0.524' W	Drop Point	CMD 3	41° 56.363' N	123° 9.880' W
Drop Point	DP-33	42° 6.398' N	123° 16.306' W	Drop Point	DP-71	41° 58.953' N	123° 6.100' W	Drop Point	DP-16.1	42° 0.140' N	123° 11.567' W
Drop Point	DP-16	42° 1.539' N	123° 9.923' W	Drop Point	DP-70	42° 0.600' N	123° 11.602' W	Drop Point	DP-16	42° 0.140' N	123° 11.567' W
Drop Point	DP-41	42° 7.498' N	123° 20.572' W	Drop Point	DP-86	41° 57.803' N	123° 0.704' W	Drop Point	DP-16	42° 0.140' N	123° 11.567' W
Drop Point	DP-20	42° 6.249' N	123° 5.522' W	Drop Point	DP-80	41° 56.945' N	123° 12.779' W	Drop Point	DP-16	42° 0.140' N	123° 11.567' W
Drop Point	DP-12	41° 58.865' N	123° 12.339' W	Drop Point	DP-80	41° 56.945' N	123° 12.779' W	Drop Point	DP-16	42° 0.140' N	123° 11.567' W
Drop Point	DP-29	42° 5.618' N	123° 7.924' W	Drop Point	DP-80	41° 56.945' N	123° 12.779' W	Drop Point	DP-16	42° 0.140' N	123° 11.567' W
Drop Point	DP-37	42° 5.069' N	123° 18.666' W	Drop Point	DP-80	41° 56.945' N	123° 12.779' W	Drop Point	DP-16	42° 0.140' N	123° 11.567' W
Drop Point	DP-15/H-15	42° 1.349' N	123° 13.786' W	Drop Point	DP-80	41° 56.945' N	123° 12.779' W	Drop Point	DP-16	42° 0.140' N	123° 11.567' W



1:72,000  
200' Contours

	Division Break		Pacific Crest Trail		Private and State
	Helispot		Forest Boundary		Botanical Areas
	Drop Point		Inventory Roadless Area		Eclipse Complex
	Landmark		Water Source		Wilderness
	Lookout		Value at Risk		Timber Sale
	Mobile Weather Unit		Hazard Road Impassible		Completed Line
			Uncontrolled Fire Edge		Completed Dozer Line
			TFR Boundary		Completed Hand Line
					Road as Completed Line