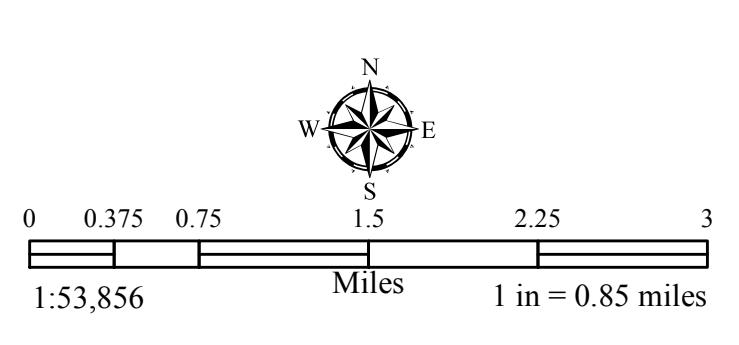
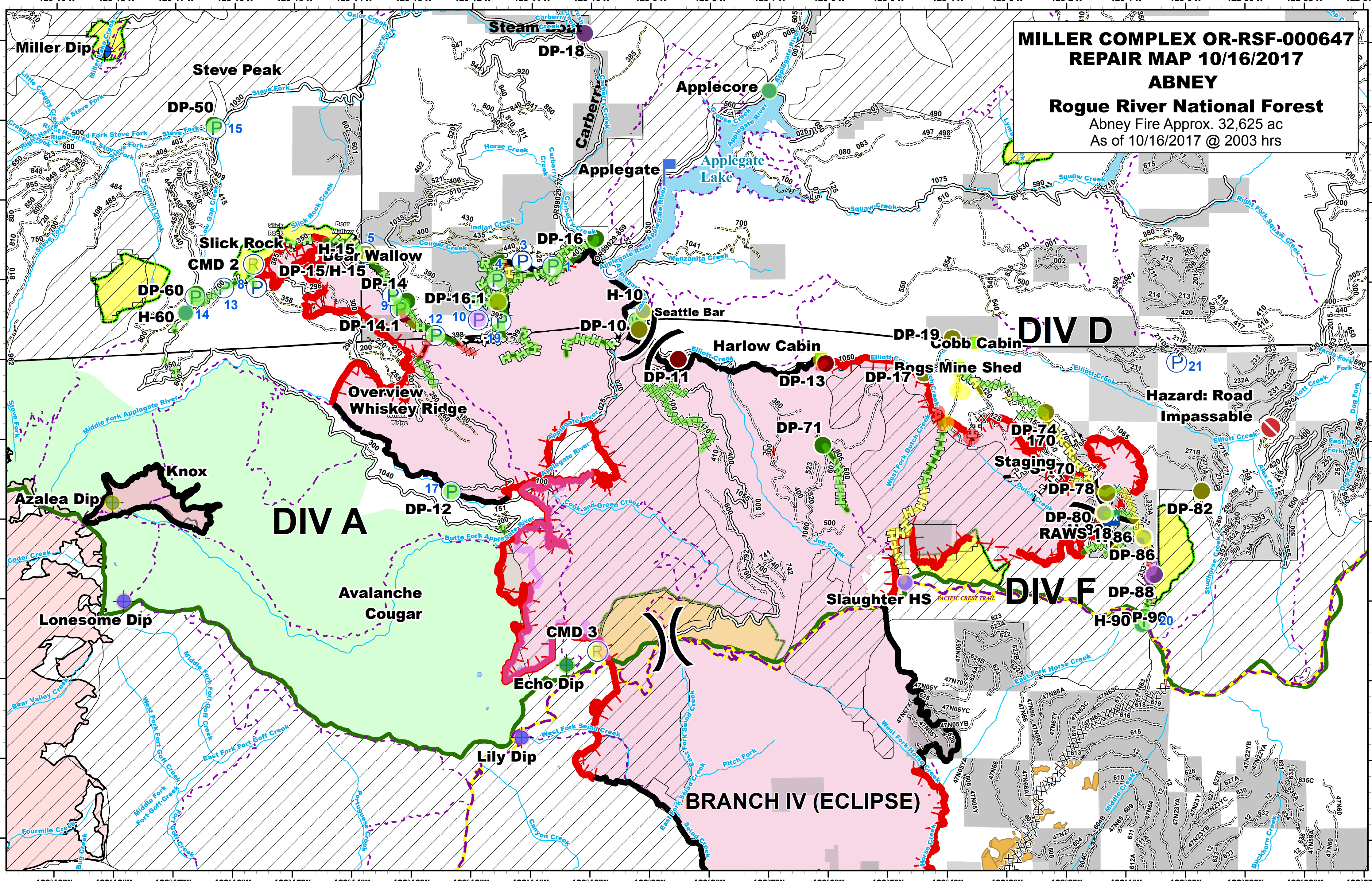


MILLER COMPLEX OR-RSF-000647
REPAIR MAP 10/16/2017
ABNEY
Rogue River National Forest
 Abney Fire Approx. 32,625 ac
 As of 10/16/2017 @ 2003 hrs



Northwest IMT 6 GIS Unit Repair_Abney_2017_MillerComplex_ORRSF000647_ArchC_land.mxd
 October 16, 2017, 2003 hrs NAD 1983 UTM Zone 10N

Number	Latitude	Longitude	Serial Num	Notes
1	42° 1' 18.33"	123° 10' 05"	AKK-0148-5068	
3	42° 1' 1.25"	123° 11' 16.66"	NWK-0148-278	
4	42° 1' 0.116"	123° 11' 59.26"	AKK-0148-1976	
5	42° 1' 3.37"	123° 13' 7.65"	GBK-0148-1917	
6	42° 1' 3.49"	123° 13' 7.86"	RMK-6000-82	4 Pumpkins at site
7	42° 0' 7.43"	123° 11' 9.82"	AKK-0148-4069	
8	42° 0' 9.22"	123° 15' 6.23"	GBK-0148-1791/NWK-0148-611C	Two Pumps / 1 Folda-Tank / 2 Pumpkins
9	42° 0' 6.53"	123° 13' 2.17"	AKK-0148-1977/NWK-0148-7680	Two Pumps / 3 Folda-Tanks / 1 Pumpkin
10	42° 0' 5.15"	123° 11' 8.98"	RMK-1222-52	Volume Pump
11	42° 0' 6.80"	123° 13' 3.42"	AKK-4021/NWK-0148-777	Two Pumps / 1 Pumpkin
12	42° 0' 3.23"	123° 12' 6.18"	GBK-0148-657	
13	42° 0' 9.10"	123° 16' 1.80"	GBK-0148-545/AKK-0148-1946	Two Pumps (Mark III) / 1500 gal Pumpkin
14	42° 0' 7.92"	123° 16' 6.63"	GBK-0148-614	1500 gal Pumpkin / 3000 gal Pumpkin
15	42° 2' 9.10"	123° 16' 3.18"	GBK-1222-1898*	3" Volume Pump
17	41° 58' 36.5"	123° 12' 34.5"	LSK-1222-23	3" Volume Pump
18	42° 6' 5.37"	123° 5' 3.48"	AKK-0148-1064	Mark III
19	42° 0' 4.97"	123° 11' 5.12"	GBK-0148-1217	Mark III
20	41° 56' 7.55"	123° 0' 6.43"	GBK-0148-707	Mark III
21	41° 59' 9.94"	123° 0' 14.2"	NWK-0148-489	Mark III

Operations

- Division Break
- Helispot
- Drop Point
- Landmark
- Lookout
- Mobile Weather Unit

Rehab Status

- Completed - Inspected
- Completed - Ready for Inspection
- In Progress
- Repair Needed
- Other - See Comments
- Unknown

Other Symbols:

- Pacific Crest Trail
- Forest Boundary
- Inventory Roadless Area
- Water Source
- Value at Risk
- Hazard Road Impassable
- Uncontrolled Fire Edge
- Private and State
- Botanical Areas
- Eclipse Complex
- Wilderness
- Timber Sale
- Completed Line
- Completed Dozer Line
- Completed Hand Line
- Road as Completed Line