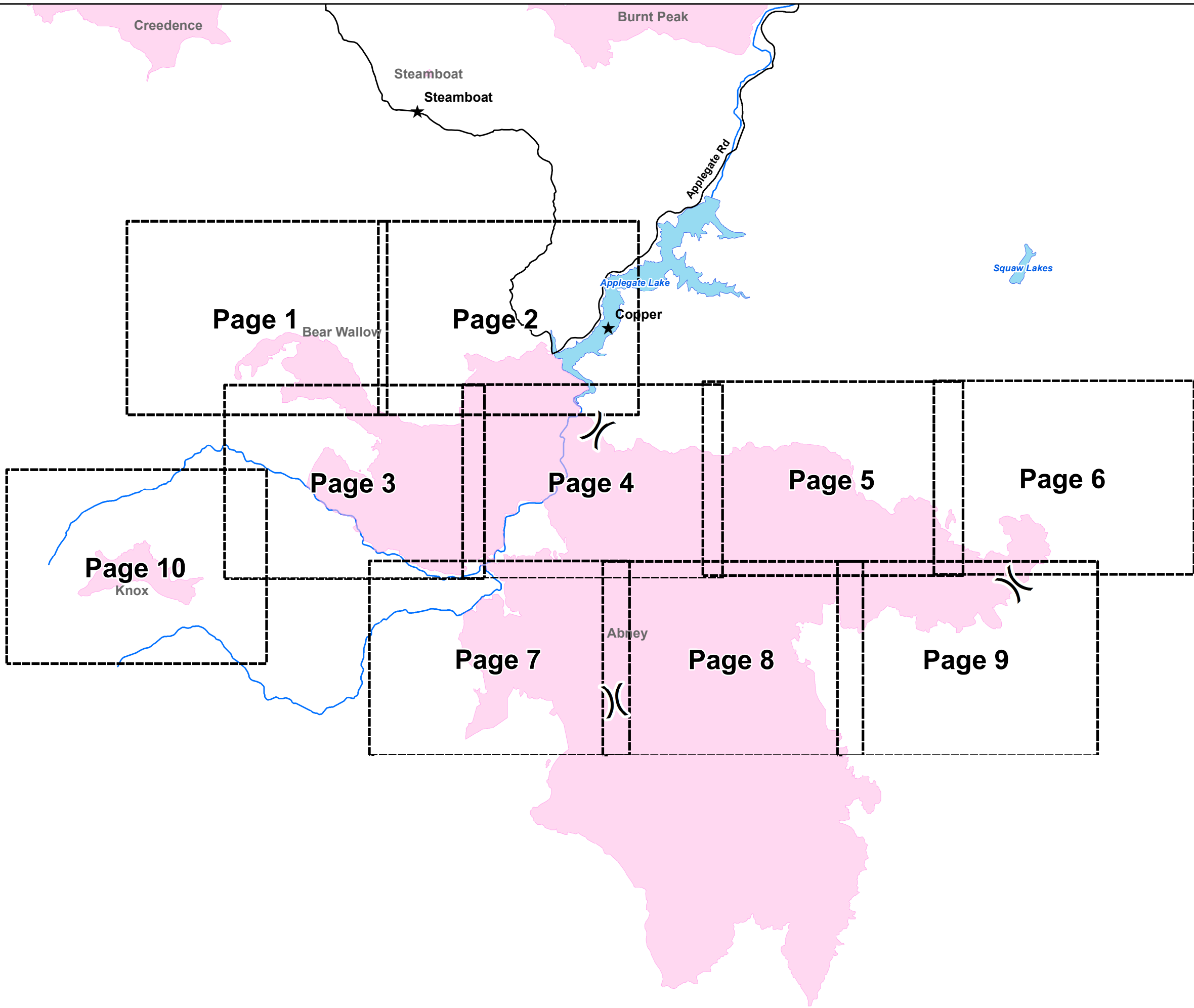









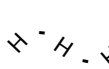
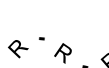





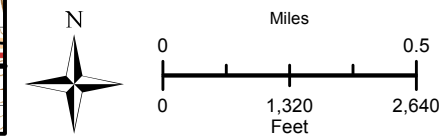
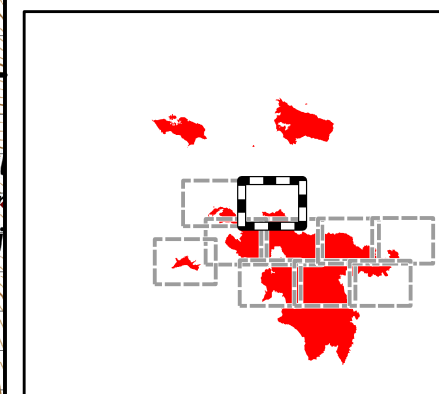
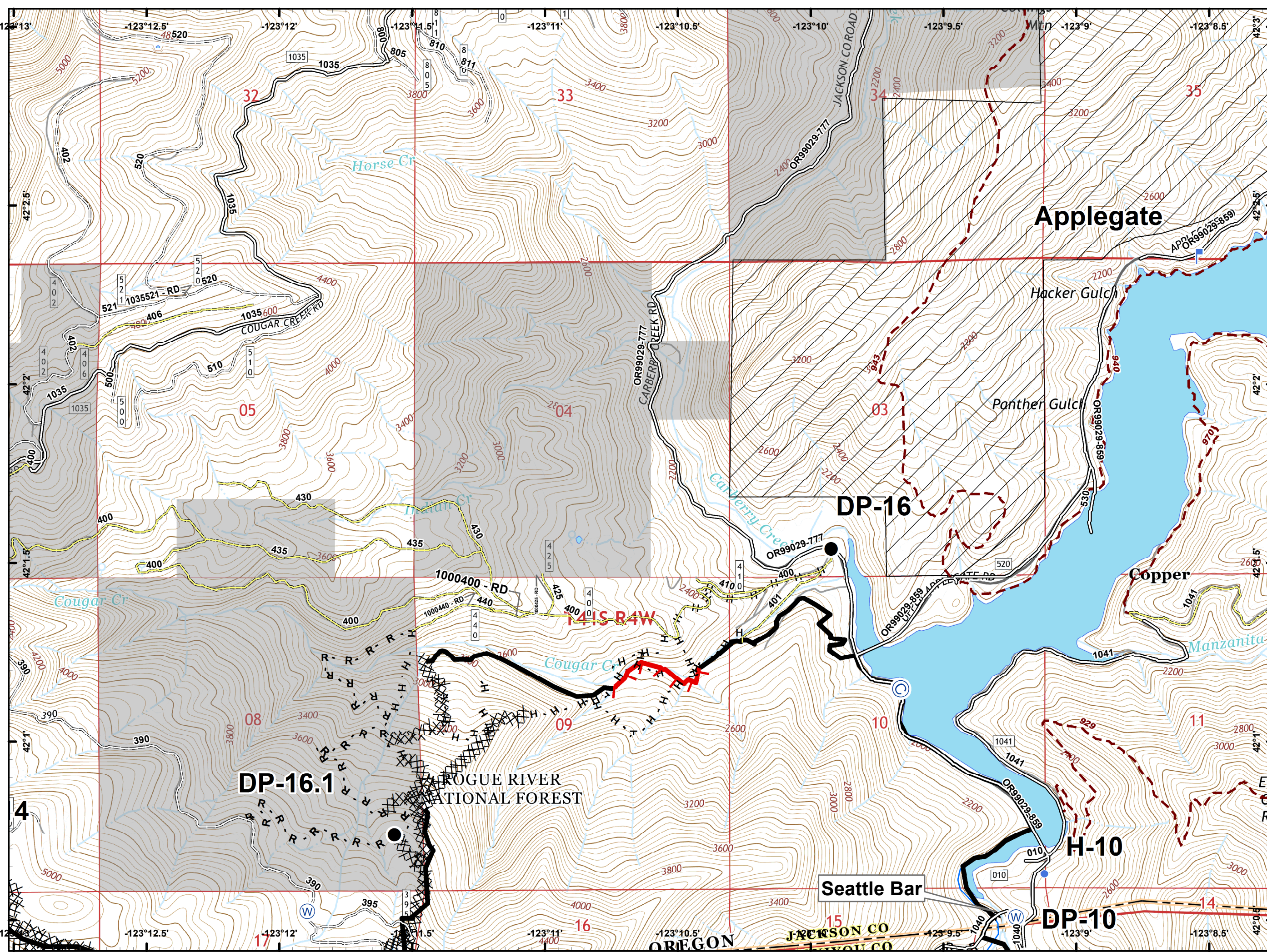
**Miller Complex
OR-RSF-000647
Rogue River Siskiyou
National Forest
October 17, 2017**



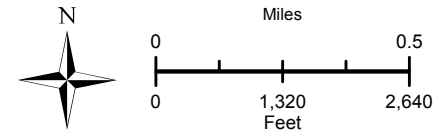
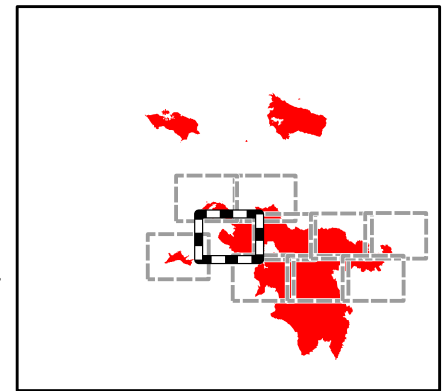
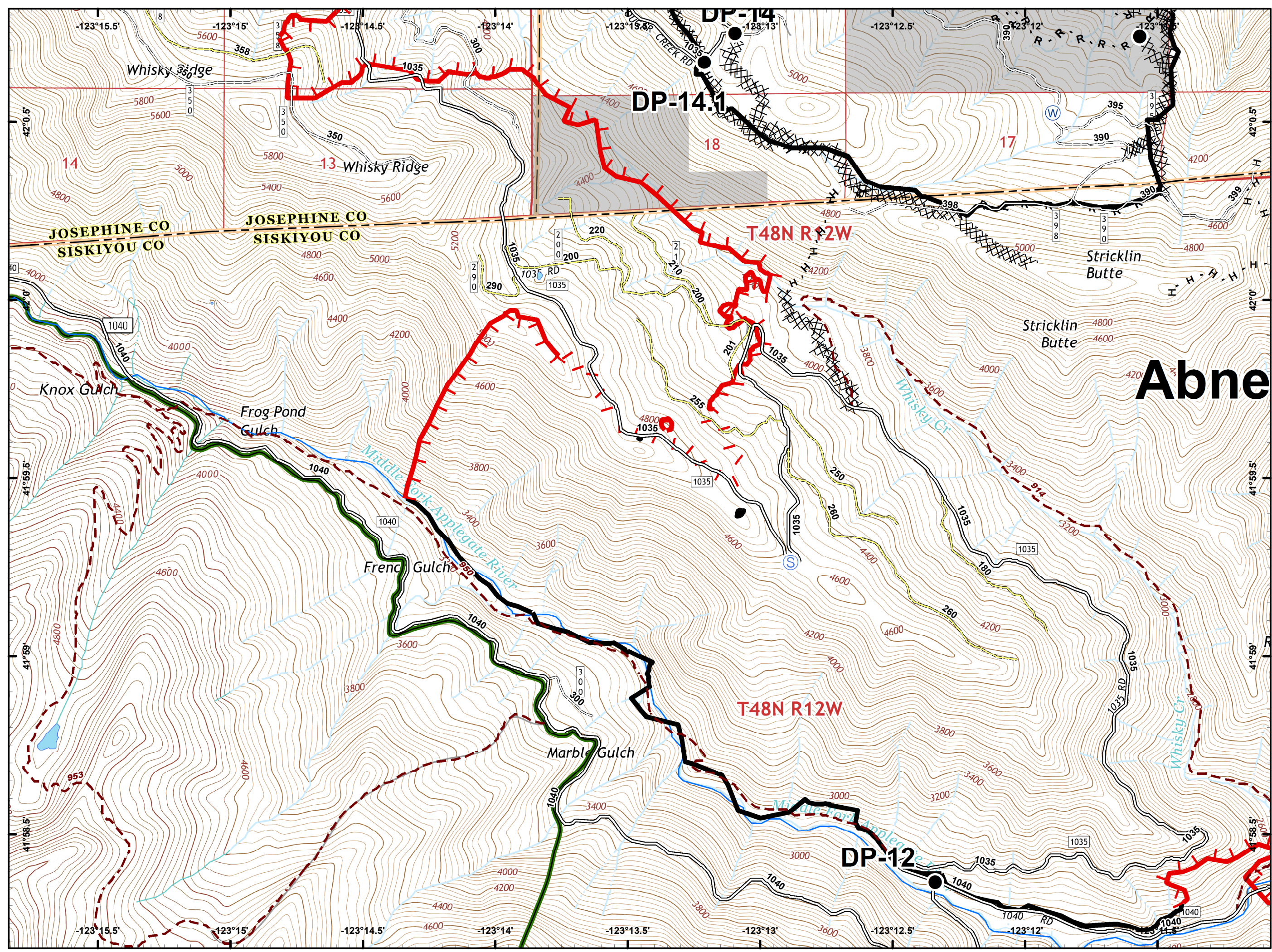
- ★ Towns
- ☐ Map Index Pages
- Fire Area



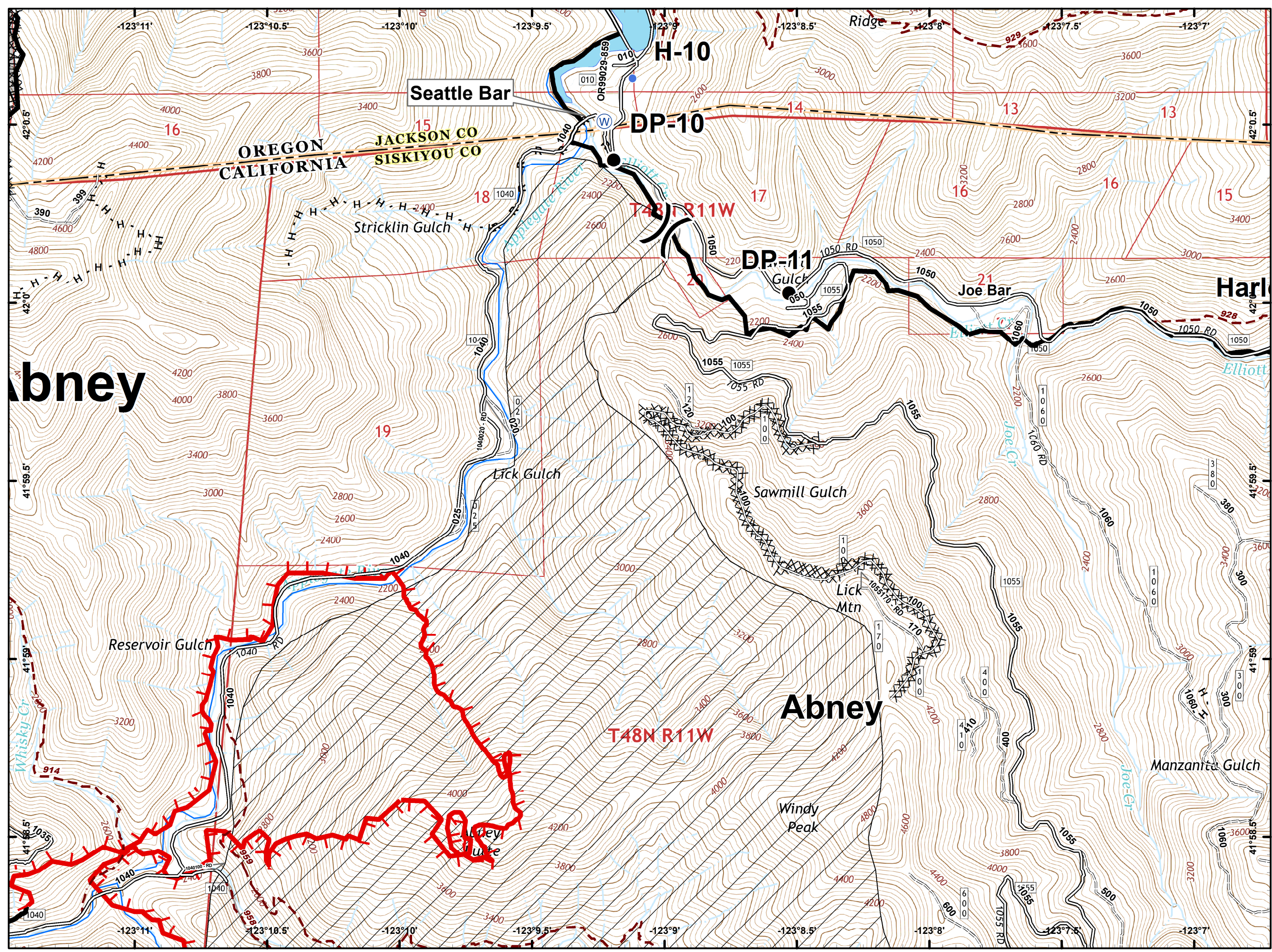
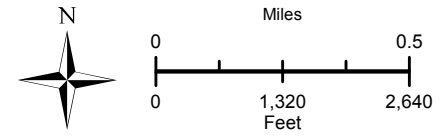
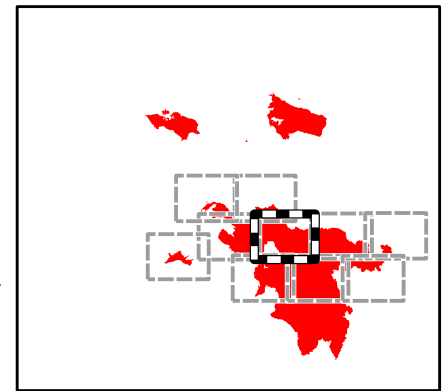
-  Camp
-  Drop Point
-  Helispot
-  Lookout
-  Water Source
-  Value at Risk
-  Uncontrolled Fire Edge
-  Completed Line
-  Completed Dozer Line
-  Completed Hand Line
-  Road as Completed Line
-  RIVERS
-  Private and State
-  IRA



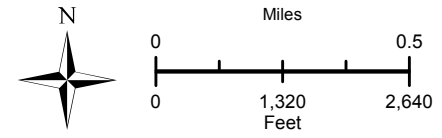
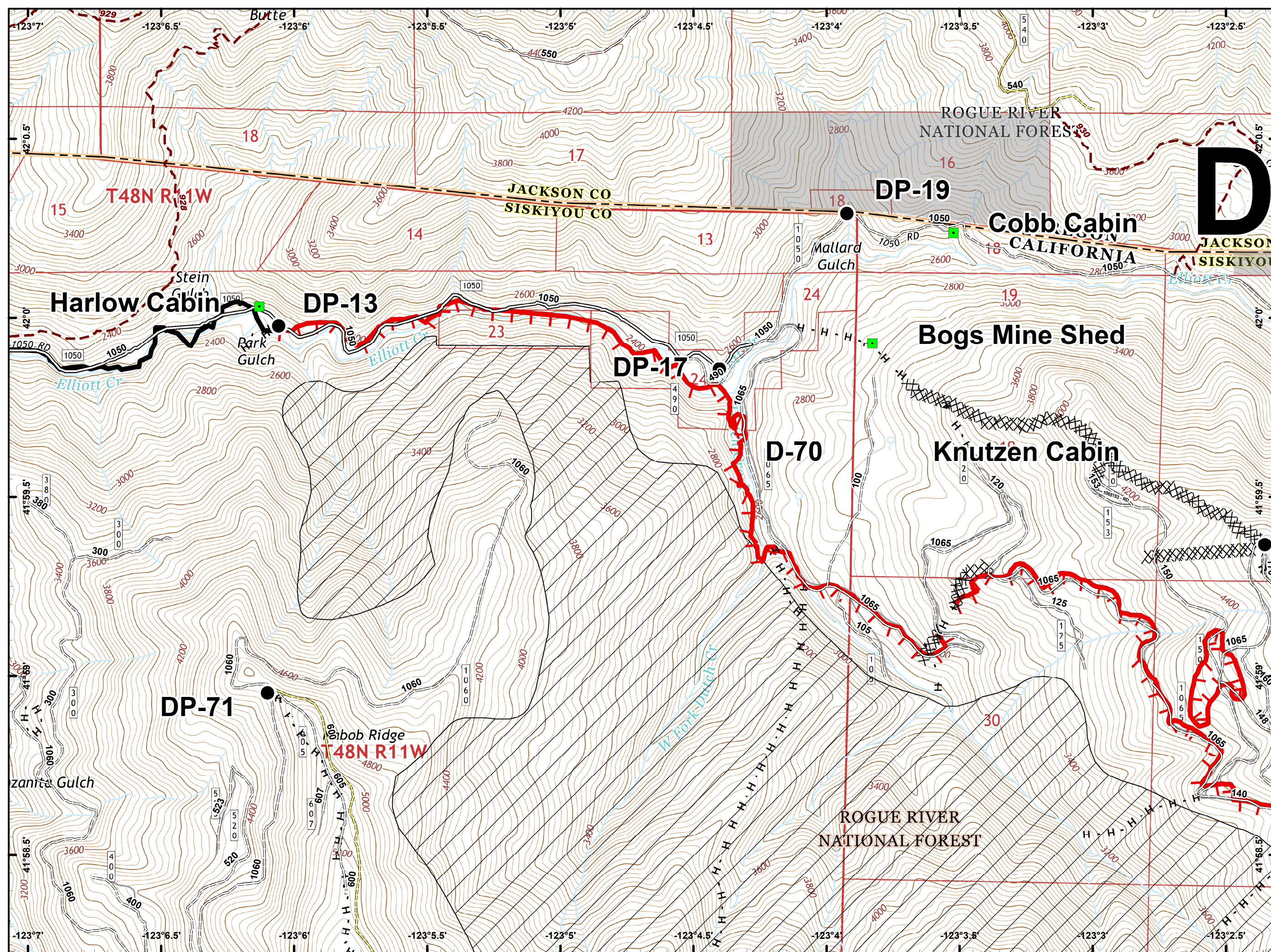
- Drop Point
- Ⓢ Staging Area
- Ⓜ Water Source
- 🔴 Uncontrolled Fire Edge
- ⚫ Completed Line
- ⚫ Completed Dozer Line
- ⚫ Completed Hand Line
- ⚫ Road as Completed Line
- 🌊 RIVERS
- 🌿 Wilderness
- ⚫ Private and State



- Drop Point
- Helispot
- Ⓜ Water Source
- ⚠ Value at Risk
-) Division Break
- 🔴 Uncontrolled Fire Edge
- ⚫ Completed Line
- ⚡ Completed Dozer Line
- ⋯ Completed Hand Line
- ⋯ Road as Completed Line
- 🌊 RIVERS
- ⬛ Private and State
- ⚡ IRA

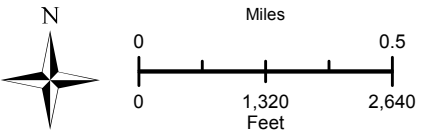
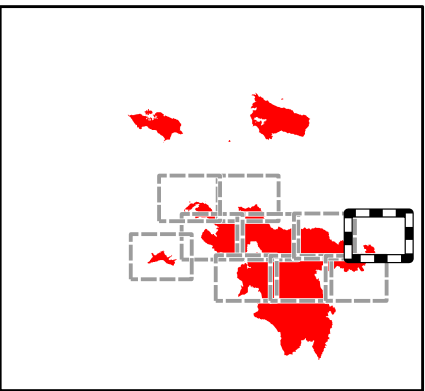
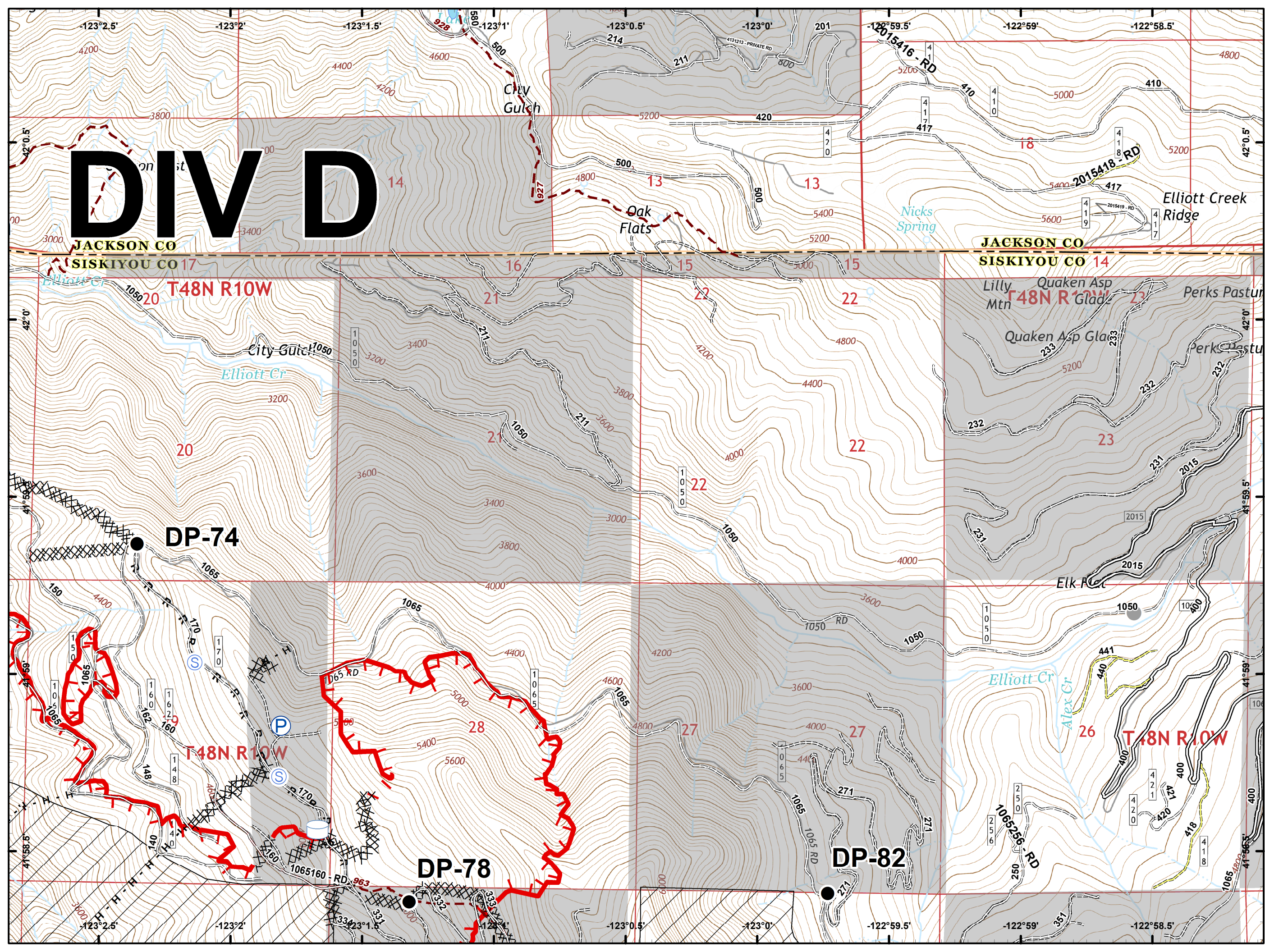









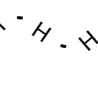




- Drop Point
- Landmark
- 🔴 Uncontrolled Fire Edge
- ⚫ Completed Line
- ⊗ Completed Dozer Line
- ⋈ Completed Hand Line
- ⋈ Completed Road as Completed Line
- Private and State
- ⊕ IRA

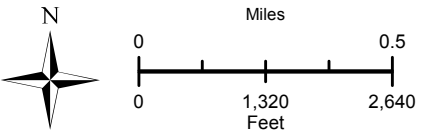
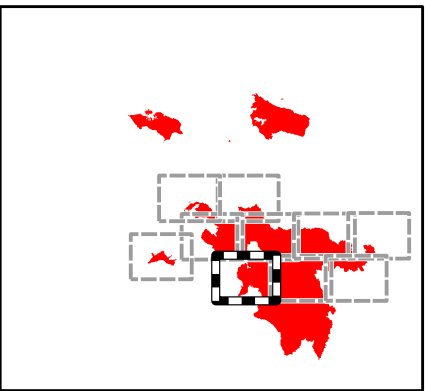
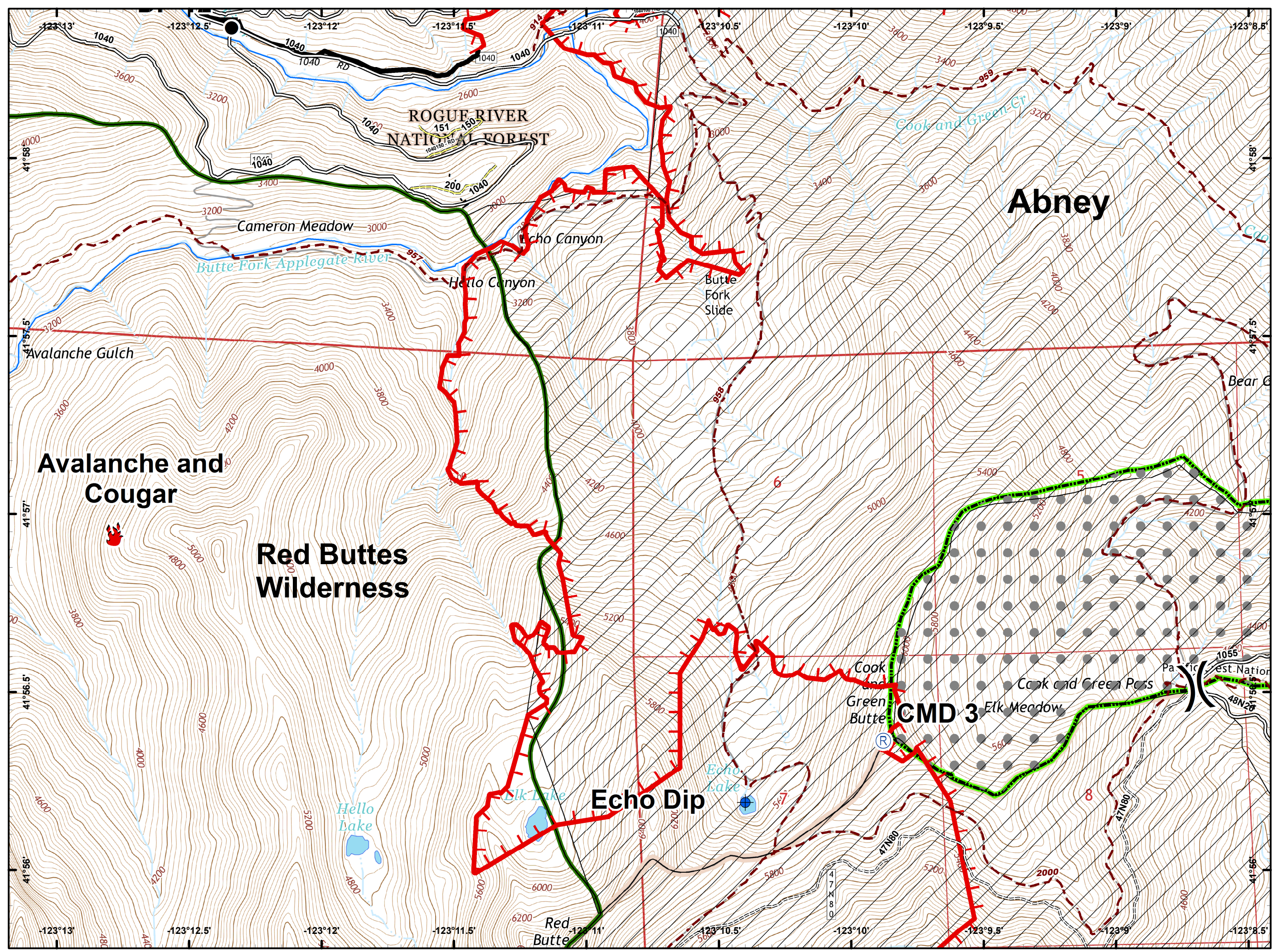


DIVID

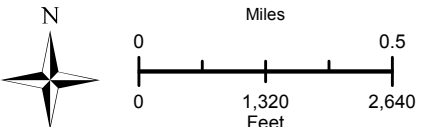
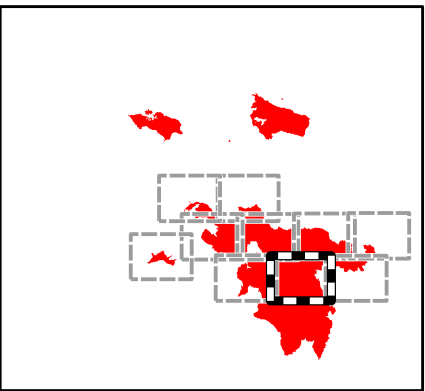
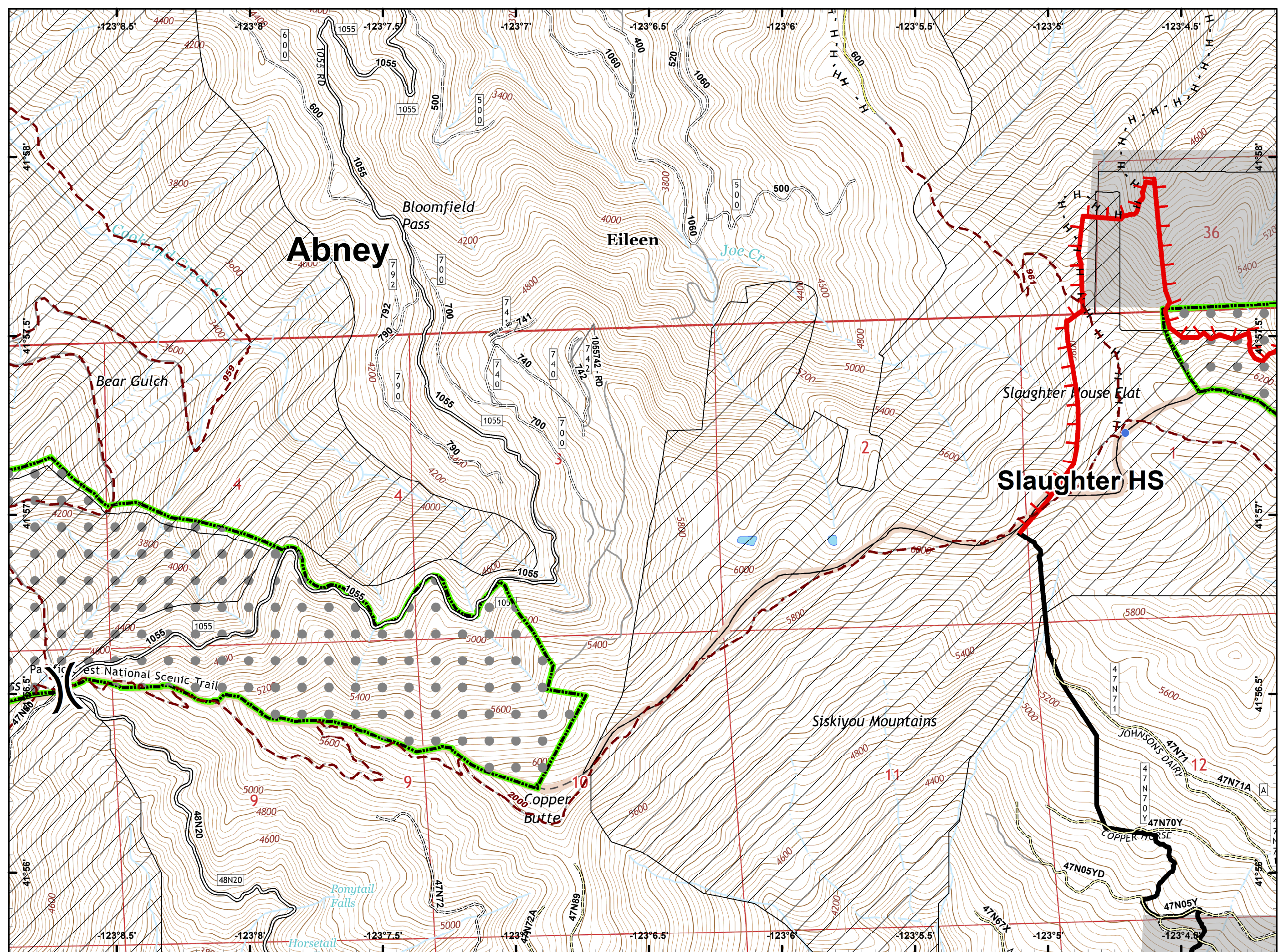
- Drop Point
- Ⓟ Pump
- Ⓢ Staging Area
- Ⓜ Water Tank
- Other
- 🔴 Uncontrolled Fire Edge
- ⓧ Completed Dozer Line
- ⋈ Completed Hand Line
- Ⓜ Road as Completed Line
- Ⓜ Private and State
- Ⓜ IRA



-  Dip Site
-  Drop Point
-  Fire Location
-  Repeater
-  Division Break
-  Uncontrolled Fire Edge
-  Completed Line
-  Completed Hand Line
-  RIVERS
-  Wilderness
-  Botanical Areas
-  IRA

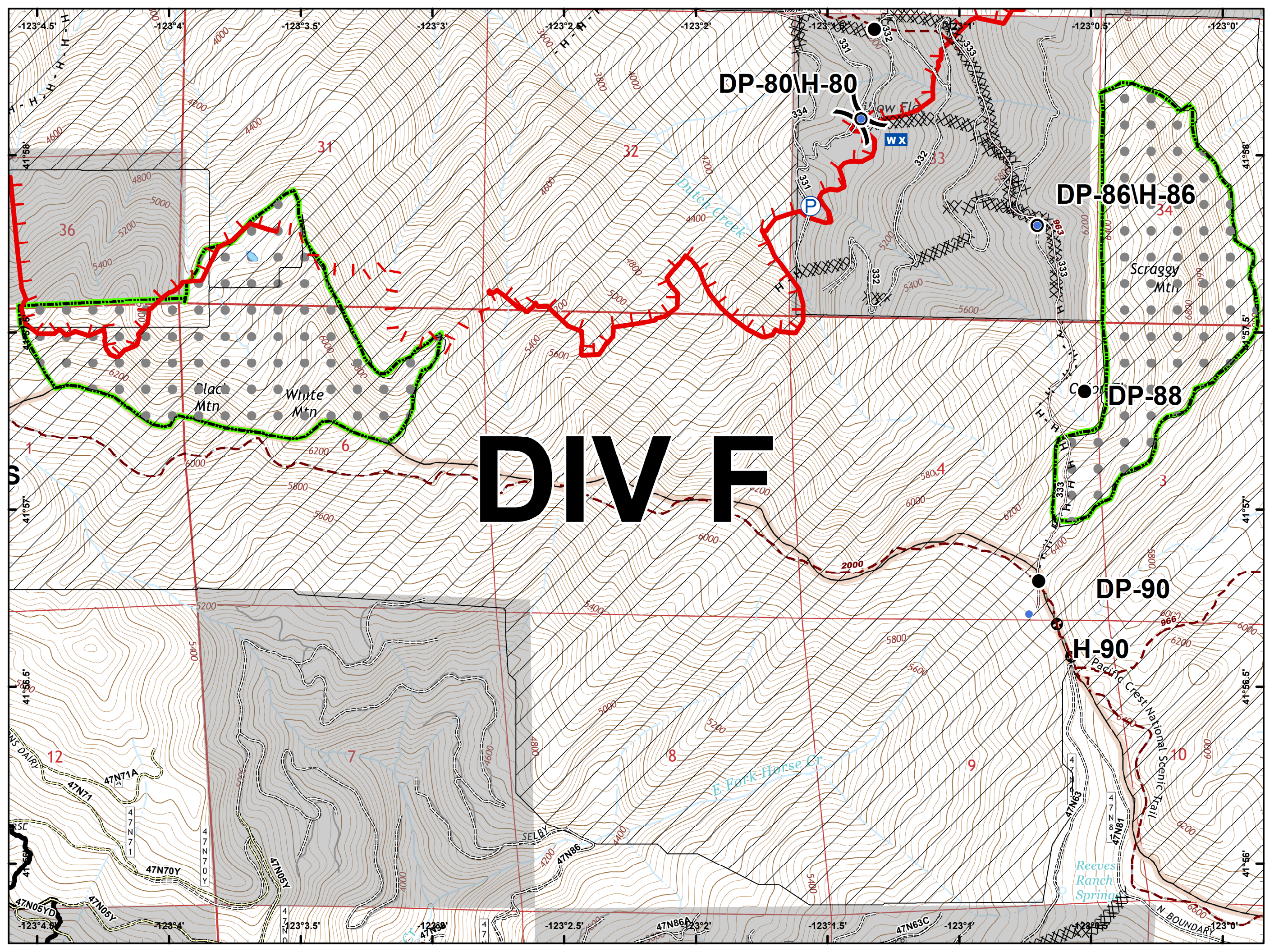
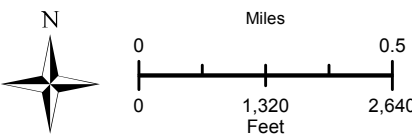
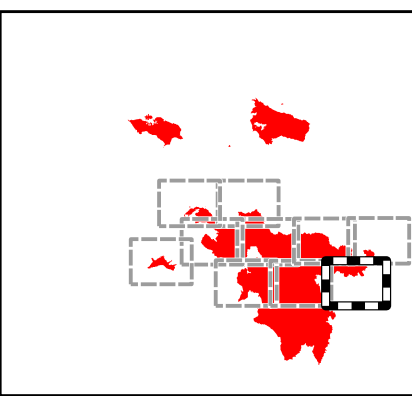







- Helispot
- ⎵ Division Break
- 🔴 Uncontrolled Fire Edge
- ⚫ Completed Line
- ⋯ Completed Hand Line
- 🟢 Botanical Areas
- ⊕ IRA

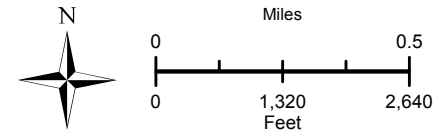
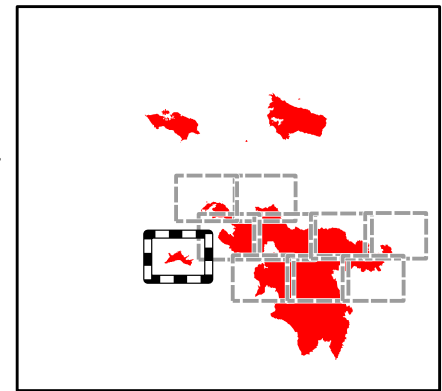
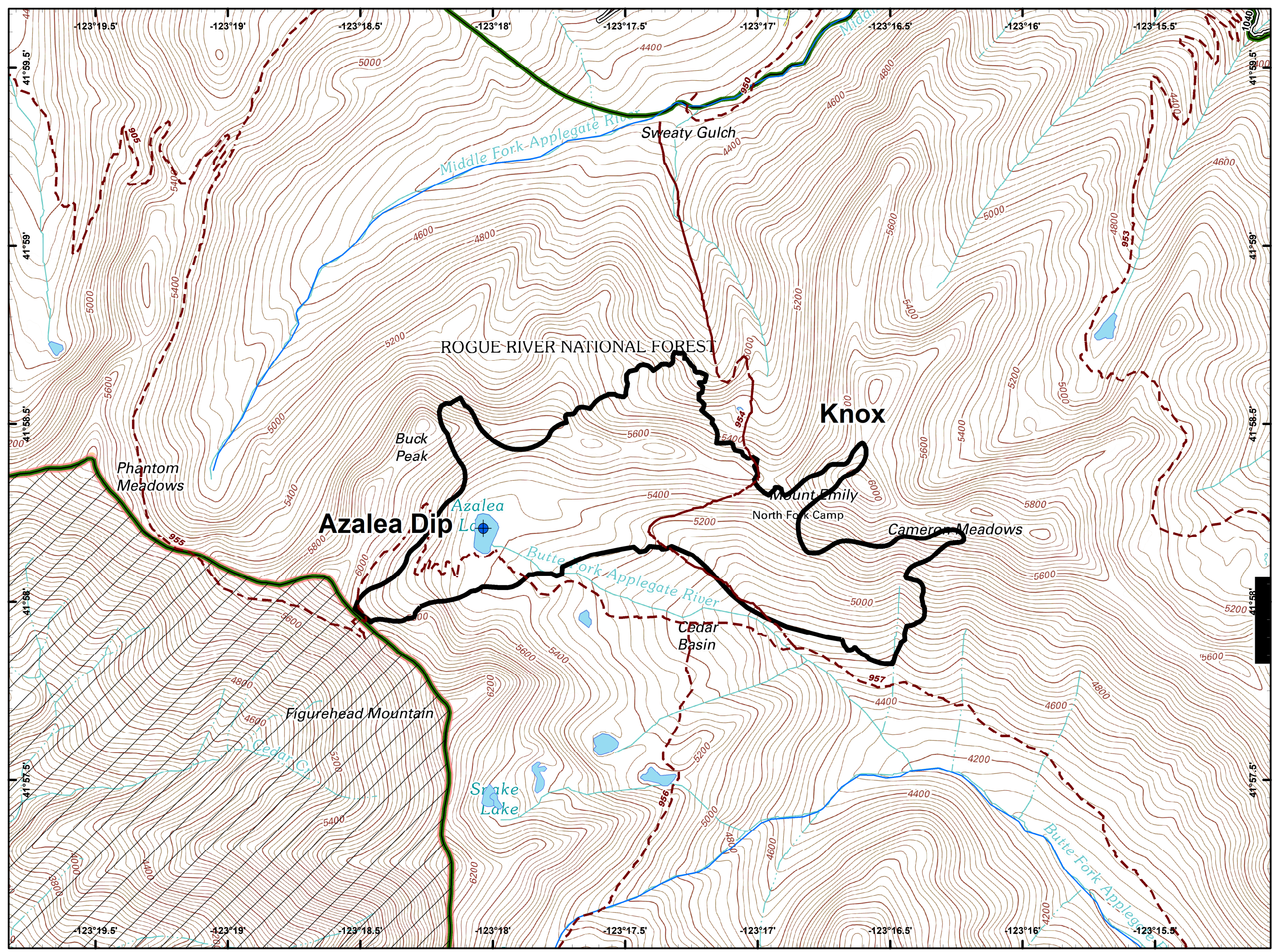


- Drop Point
- Helispot
- WX Mobile Weather Unit
- P Pump
-) Division Break
- Uncontrolled Fire Edge
- Completed Line
- Completed Dozer Line
- Completed Hand Line
- R-R-R Road as Completed Line
- Other
- Botanical Areas
- IRA

DIV F

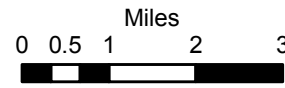


-  Dip Site
-  Completed Line
-  RIVERS
-  Wilderness
-  IRA



MILLER COMPLEX OR-RSF-00647

TRANSPORTATION MAP



UTM Zone 10 NAD83



- Siskiyou Mountains Ranger District
- Fire Areas
- Administrative Forest Boundary



McKee Bridge

Medford

Grants Pass

Creedence

Burnt Peak

Steamboat

Applegate Lake

Squaw Lakes

Road 170 deadends at DP-86

Abney

Grants Pass/
Oregon and
California
Coast



Satellite

