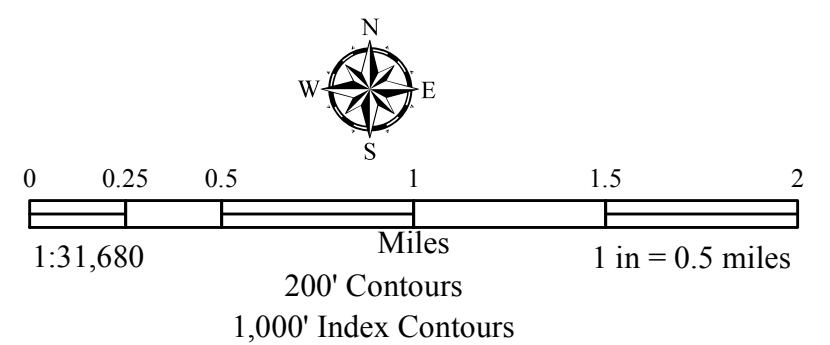
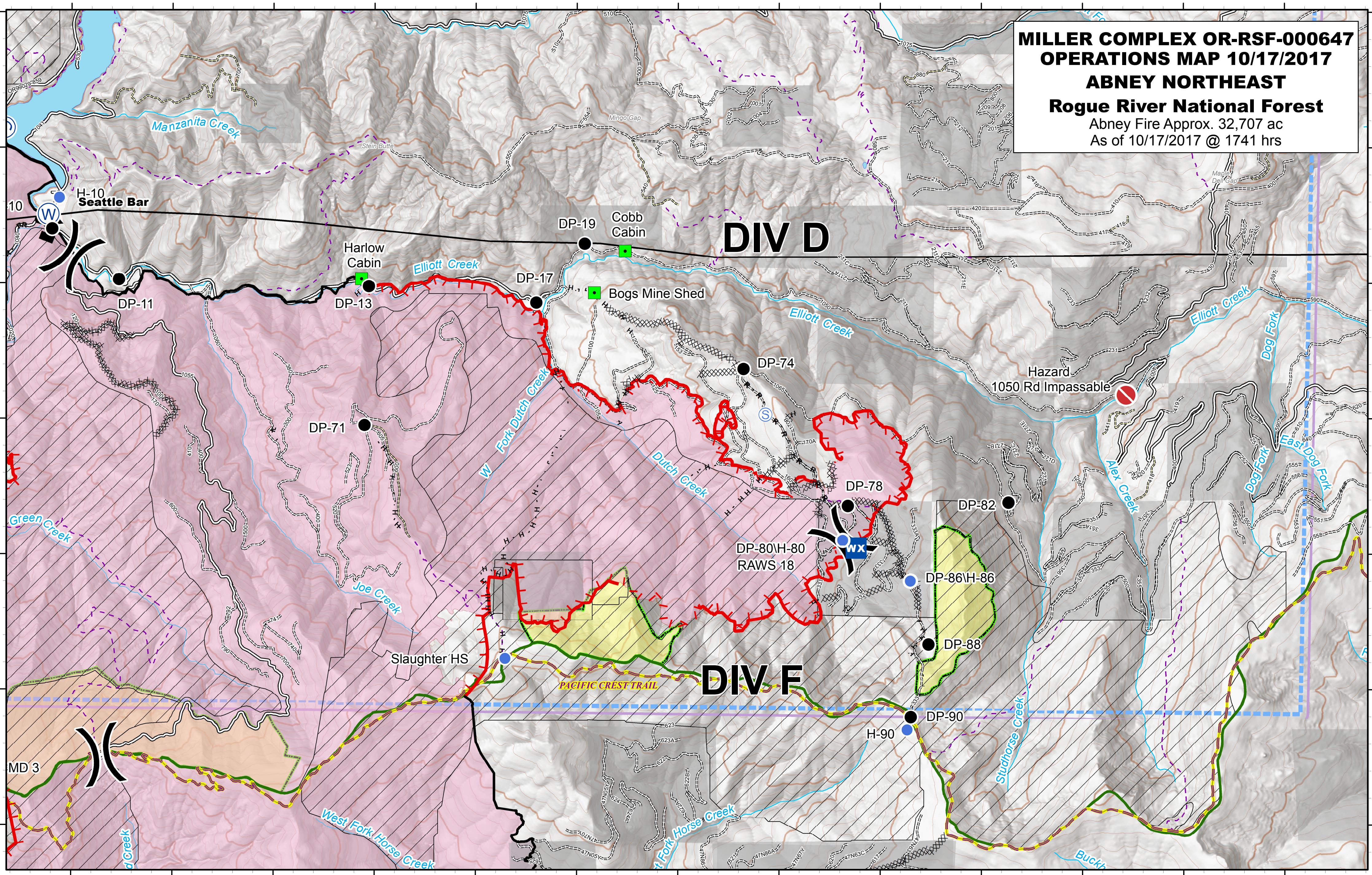


**MILLER COMPLEX OR-RSF-000647
OPERATIONS MAP 10/17/2017
ABNEY NORTHEAST
Rogue River National Forest
Abney Fire Approx. 32,707 ac
As of 10/17/2017 @ 1741 hrs**



FeatureCategory	Label	Lat	Long	FeatureCategory	Label	Lat	Long	FeatureCategory	Label	Lat	Long
Miller Dip	DP-18	42° 3.867' N	123° 18.195' W	Drop Point	DP-18	42° 4.111' N	123° 10.117' W	Helispot	H-15	42° 1.349' N	123° 13.786' W
Echo Dip	DP-14	41° 56.190' N	123° 10.400' W	Drop Point	DP-14	42° 0.668' N	123° 13.210' W	Helispot	H-50	42° 6.043' N	123° 19.252' W
Lily Dip	DP-11	41° 55.280' N	123° 11.150' W	Drop Point	DP-11	42° 0.027' N	123° 18.530' W	Helispot	H-80	41° 58.204' N	123° 1.322' W
Azalea Dip	DP-13	41° 58.207' N	123° 18.030' W	Drop Point	DP-13	41° 59.978' N	123° 0.058' W	Helispot	H-86	41° 57.803' N	123° 0.704' W
Lonesome Dip	DP-17	41° 56.976' N	123° 17.839' W	Drop Point	DP-17	41° 59.857' N	123° 4.402' W	Helispot	H-90	41° 56.705' N	123° 0.735' W
Bolan Dip	DP-19	42° 1.310' N	123° 27.570' W	Drop Point	DP-19	42° 0.292' N	123° 1.923' W	Helispot	H-10	42° 0.630' N	123° 9.120' W
DP-10	DP-10	42° 0.400' N	123° 9.191' W	Drop Point	DP-10	42° 0.830' N	123° 16.638' W	Helispot	H-60	42° 0.993' N	123° 16.812' W
DP-28	DP-28	42° 5.145' N	123° 9.245' W	Drop Point	DP-50	42° 2.953' N	123° 16.355' W	Incident Command Post	ICP	42° 14.058' N	123° 3.943' W
DP-25	DP-25	42° 7.031' N	123° 9.822' W	Drop Point	DP-90	41° 56.798' N	123° 0.698' W	Landmark	Bogs Mine Shed	41° 59.929' N	123° 3.828' W
DP-33	DP-33	42° 7.973' N	123° 10.072' W	Drop Point	DP-82	41° 58.281' N	123° 10.733' W	Landmark	Harlow Cabin	42° 0.032' N	123° 6.333' W
DP-21	DP-21	42° 6.982' N	123° 7.703' W	Drop Point	DP-74	41° 59.368' N	123° 2.354' W	Landmark	Cobb Cabin	42° 0.237' N	123° 3.523' W
DP-38	DP-38	42° 6.649' N	123° 18.181' W	Drop Point	DP-78	41° 58.357' N	123° 1.322' W	Lookout	Applegate	42° 2.357' N	123° 8.547' W
DP-32	DP-32	42° 6.212' N	123° 14.133' W	Drop Point	DP-80	41° 58.104' N	123° 1.372' W	Repeater	CMO 1	42° 11.785' N	123° 9.089' W
DP-30	DP-30	42° 5.568' N	123° 11.698' W	Drop Point	DP-86	41° 57.803' N	123° 0.704' W	Repeater	CMO 2	42° 1.200' N	123° 15.681' W
DP-35	DP-35	42° 4.944' N	123° 17.252' W	Drop Point	DP-88	41° 57.334' N	123° 0.524' W	Repeater	CMO 3	41° 56.363' N	123° 9.880' W
DP-33	DP-33	42° 6.398' N	123° 16.300' W	Drop Point	DP-71	41° 58.953' N	123° 6.100' W	Repeater	CMO 4	42° 2.636' N	123° 53.449' W
DP-14	DP-14	42° 0.349' N	123° 11.095' W	Drop Point	DP-16	42° 0.140' N	123° 11.567' W	Repeater	CMO 5	42° 6.590' N	123° 18.755' W
DP-16	DP-16	42° 1.539' N	123° 9.923' W	Fire Location	Applegate Cougar	41° 56.945' N	123° 12.779' W	Sling Site	Sling 1	42° 7.210' N	123° 19.587' W
DP-41	DP-41	42° 7.498' N	123° 20.572' W	Fire Location	Redwood	42° 1.222' N	123° 26.913' W	Sling Site	Sling 2	42° 6.955' N	123° 19.127' W
DP-20	DP-20	42° 6.240' N	123° 5.522' W	Helibase	Cave Junction	40° 6.000' N	123° 41.000' W	Mobile Weather Unit	RAWS 18	41° 58.10664' N	123° 1.37502' W
DP-12	DP-12	41° 58.865' N	123° 11.339' W	Helispot	Applegate	42° 1.304' N	123° 7.003' W	Other	Hazard Road Impassable	41° 59.1751' N	122° 58.5676' W
DP-29	DP-29	42° 5.618' N	123° 7.924' W	Helispot	Hamilton	42° 14.054' N	123° 3.704' W				
DP-37	DP-37	42° 5.069' N	123° 18.660' W	Helispot	H-41	42° 7.460' N	123° 20.566' W				
DP-15/H-15	DP-15/H-15	42° 1.349' N	123° 13.786' W	Helispot	Slaughter HS	41° 57.230' N	123° 4.710' W				

- Uncontrolled Fire Edge
- Completed Line
- Completed Dozer Line
- Completed Hand Line
- Road as Completed Line
- TFR Boundary
- Helispot
- Drop Point
- Water Source
- Hazard Road Impassable
- Private and State
- Botanical Areas
- Wilderness
- Timber Sale
- Forest Boundary
- Inventory Roadless Area
- Mobile Weather Unit
- Value at Risk
- Lookout
- Landmark