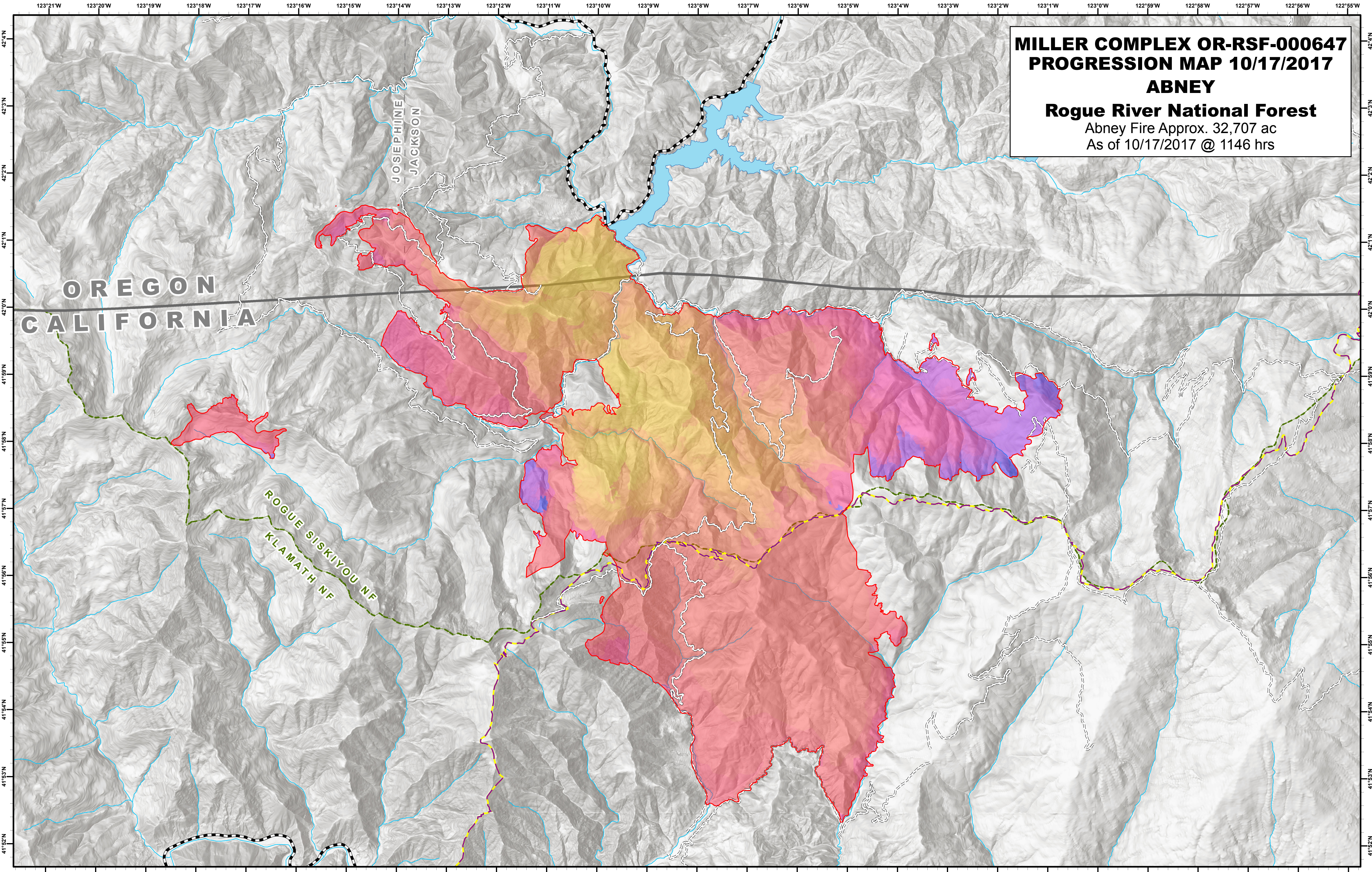
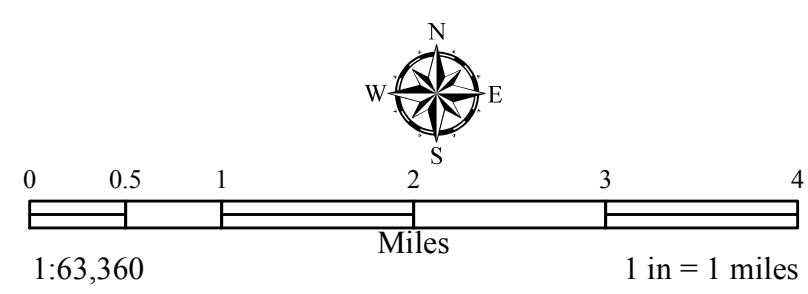


**MILLER COMPLEX OR-RSF-000647
PROGRESSION MAP 10/17/2017
ABNEY**
Rogue River National Forest
Abney Fire Approx. 32,707 ac
As of 10/17/2017 @ 1146 hrs



Northwest IMT 6 GIS Unit
October 17, 2017, 1146 hrs



**Abney Fire Progression
Date, Acres of Growth**

2017-08-17, 291
2017-08-19, 1037
2017-08-21, 1077

2017-08-22, 476	2017-08-27, 1246	2017-09-02, 1589	2017-09-09, 211	2017-09-16, 346	2017-09-29, 391	2017-10-06, 115	2017-10-11, 1
2017-08-23, 921	2017-08-28, 1562	2017-09-03, 5	2017-09-10, 79	2017-09-18, 456	2017-10-01, 248	2017-10-07, 208	2017-10-12, 10
2017-08-24, 373	2017-08-29, 1666	2017-09-04, 8968	2017-09-13, 685	2017-09-20, 173	2017-10-03, 127	2017-10-08, 14	2017-10-14, 4
2017-08-25, 243	2017-08-30, 553	2017-09-06, 4573	2017-09-14, 274	2017-09-25, 101	2017-10-04, 122	2017-10-09, 446	2017-10-15, 60
2017-08-26, 624	2017-08-31, 463	2017-09-07, 1648	2017-09-15, 582	2017-09-27, 234	2017-10-05, 45	2017-10-10, 136	2017-10-16, 85

- Highway
- Other Mainline Road
- Pacific Crest Trail
- State Boundary
- County Boundary
- Forest Administrative Boundary

Progression_Abney_2017_MillerComplex_ORRSF000647_ArchC_port.mxd
NAD 1983 UTM Zone 10N