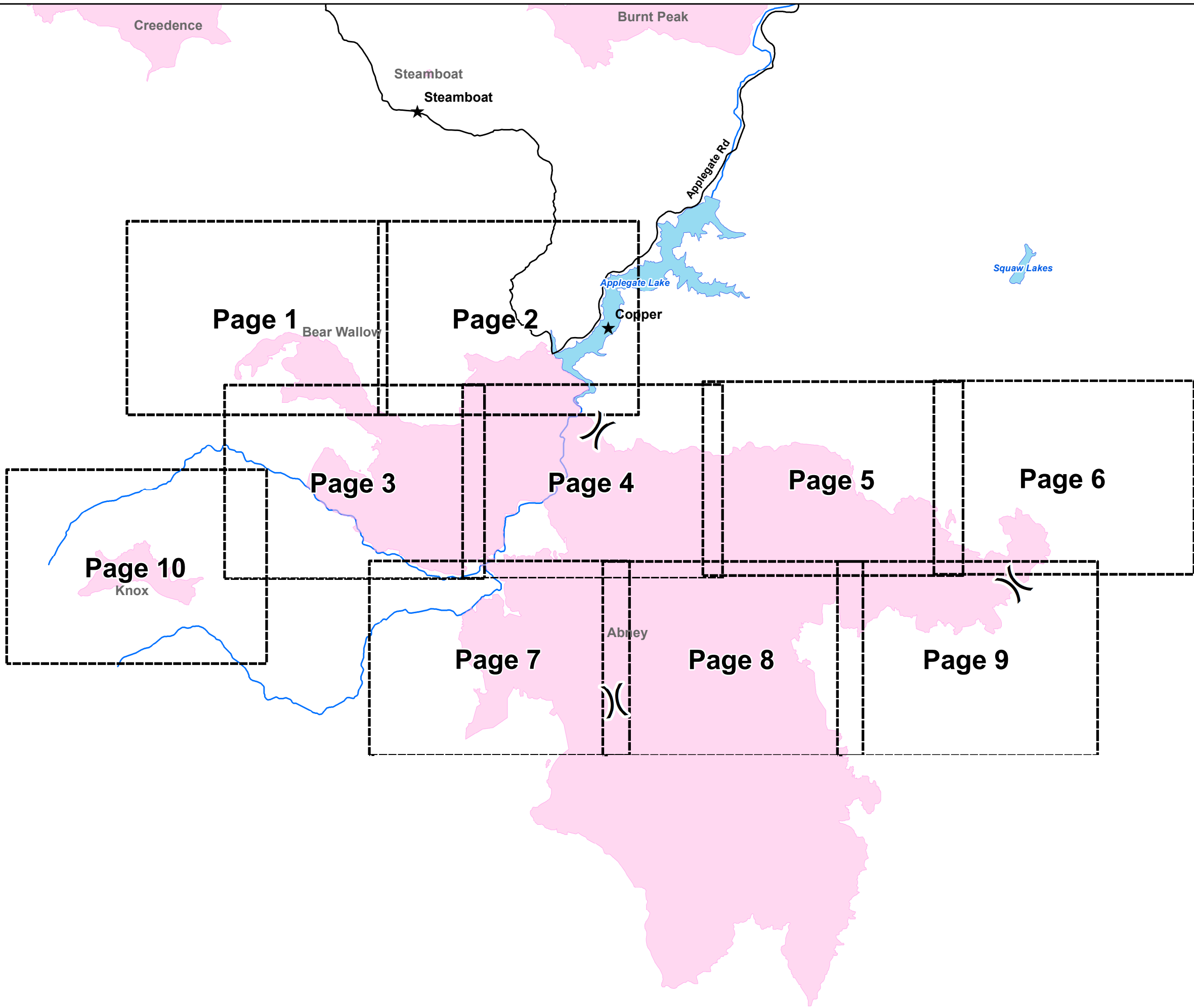


**Miller Complex  
OR-RSF-000647  
Rogue River Siskiyou  
National Forest  
October 19, 2017**

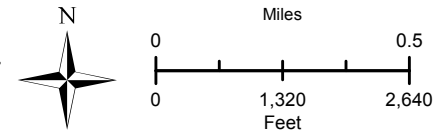
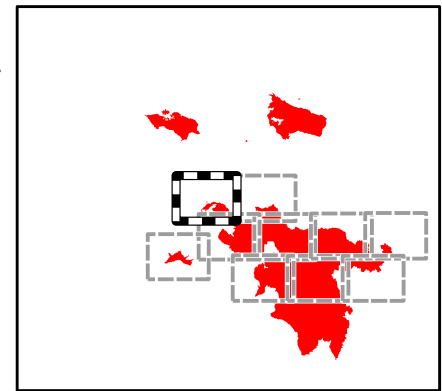
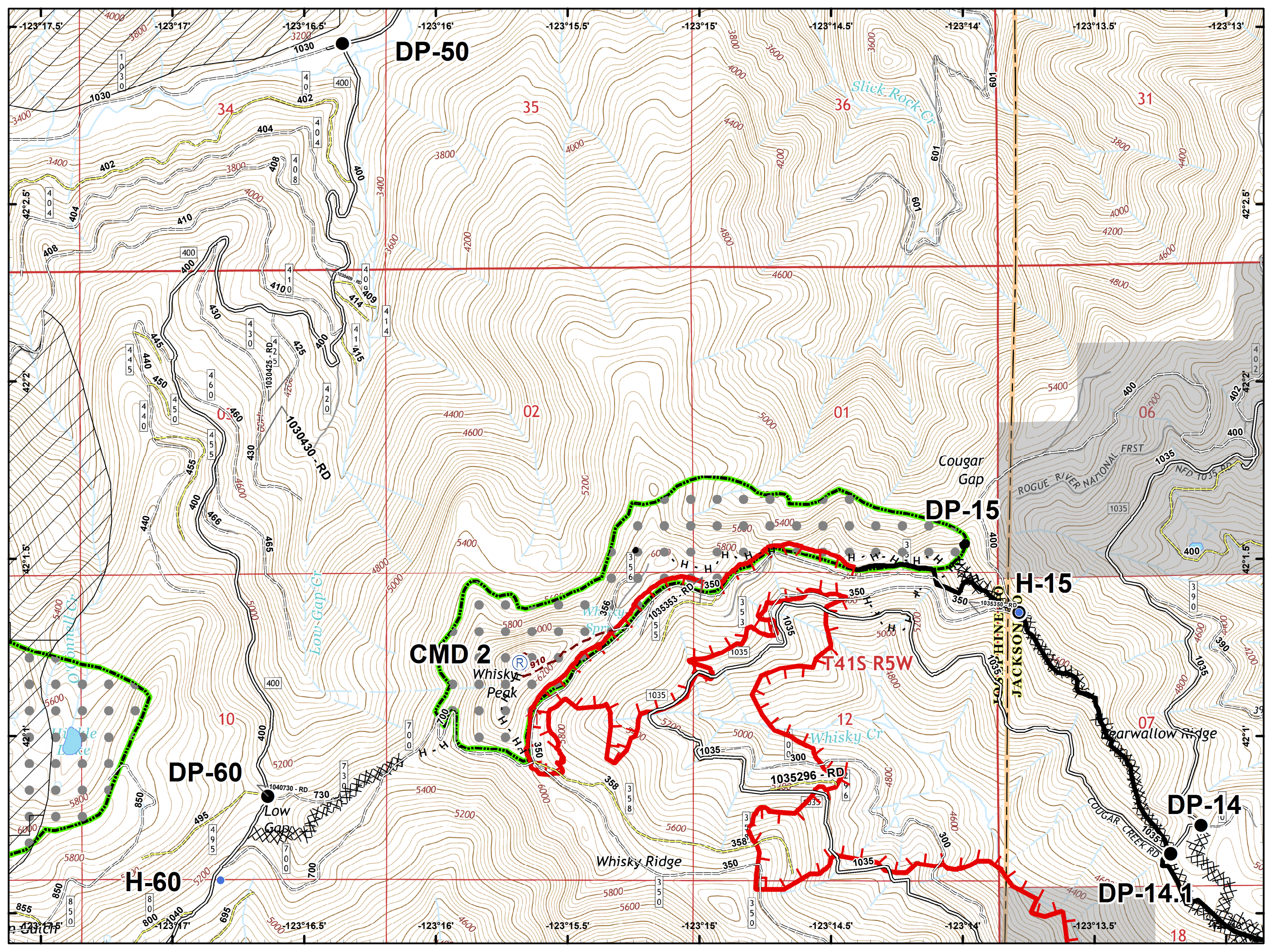


- ★ Towns
- ☐ Map Index Pages
- Fire Area



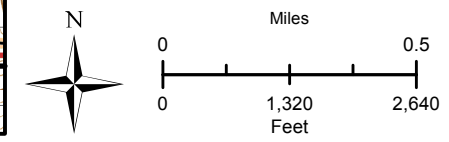
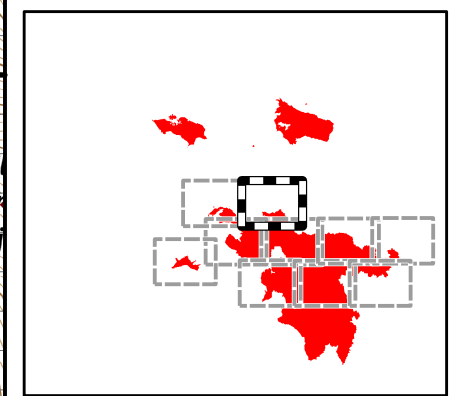
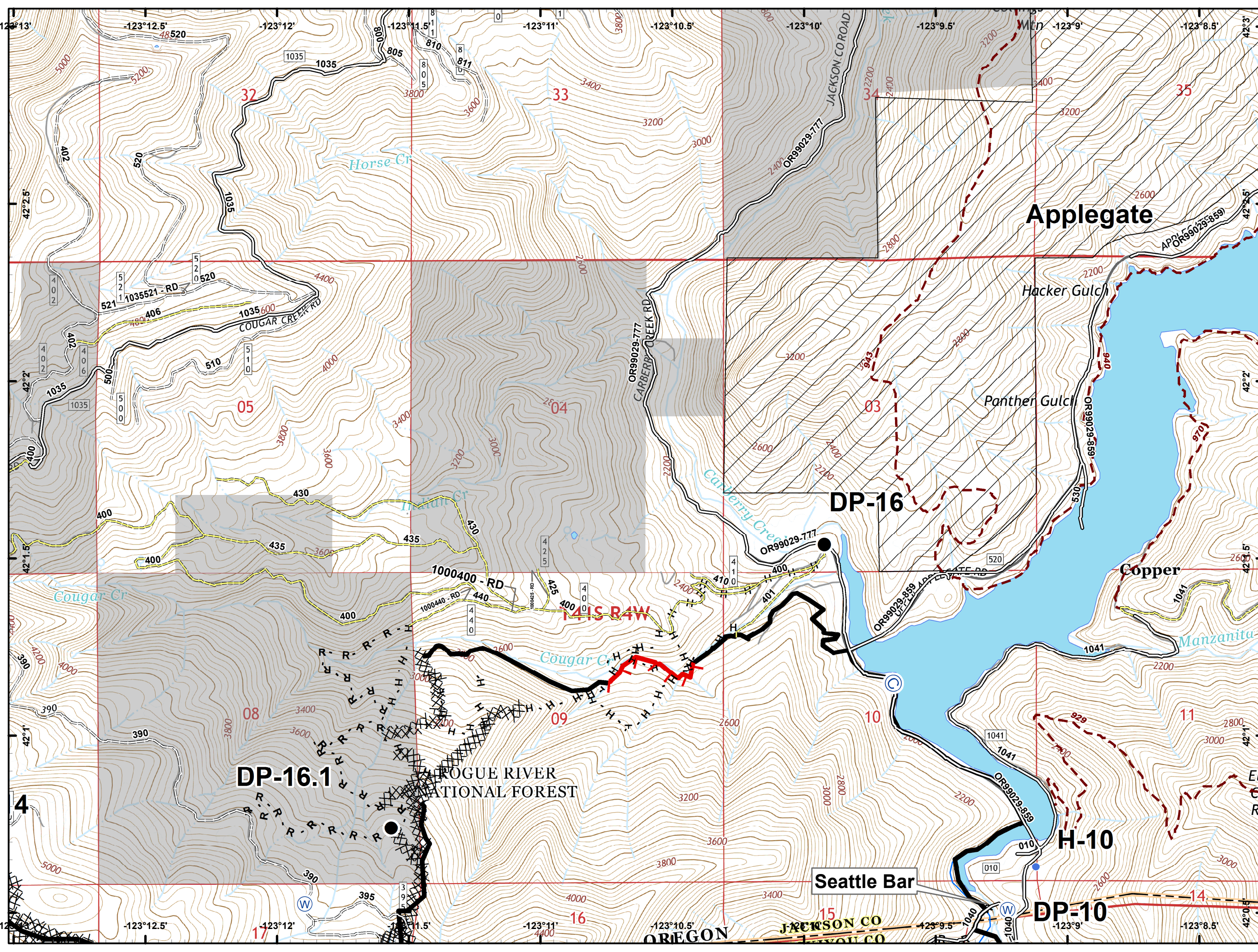


- Drop Point
- Helispot
- Ⓡ Repeater
- 🔴 Uncontrolled Fire Edge
- ⚫ Completed Line
- ⚫ Completed Dozer Line
- H-H-H Completed Hand Line
- 🌿 Botanical Areas
- Private and State
- IRA



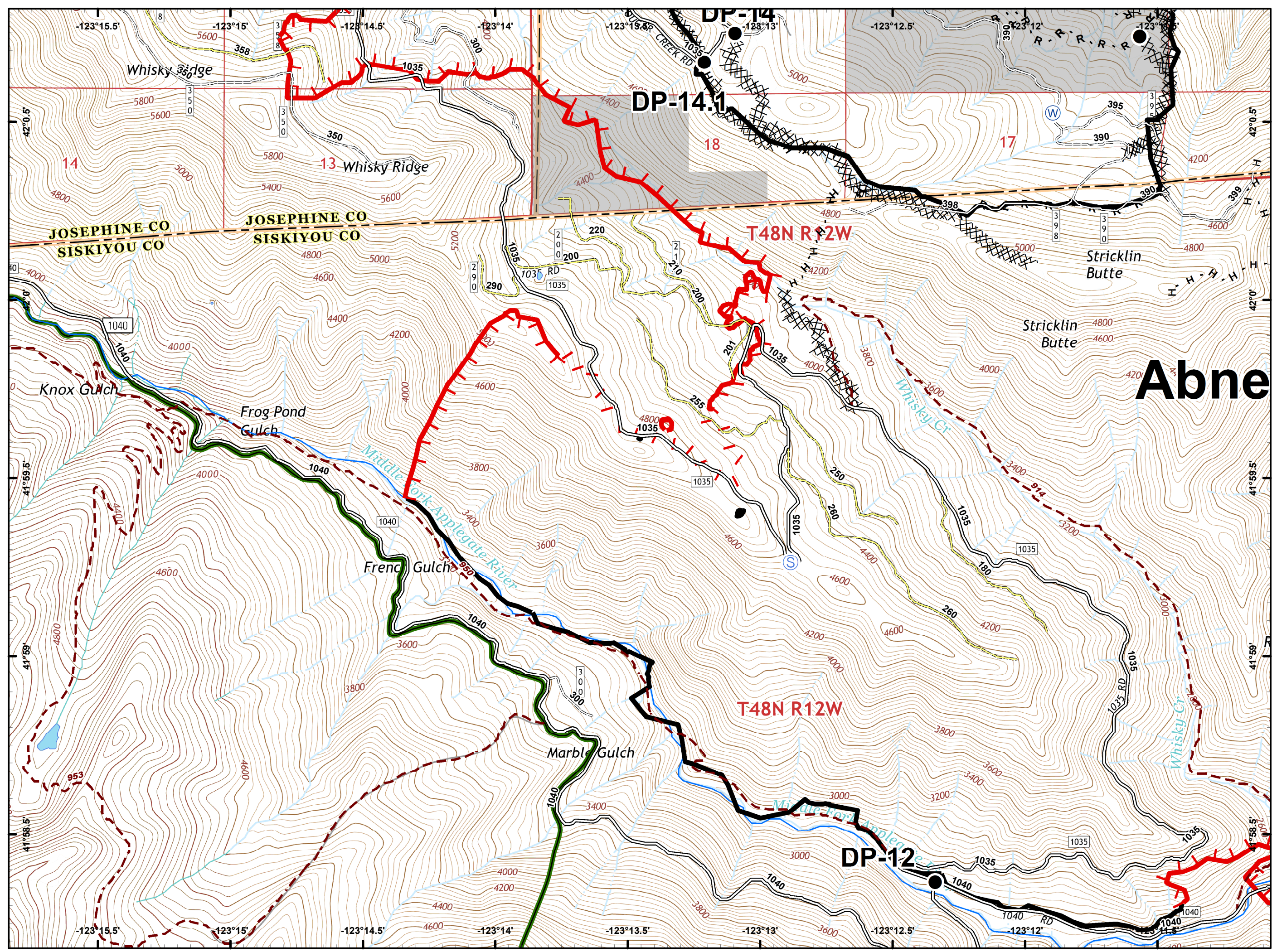


- Ⓒ Camp
- Drop Point
- Helispot
- ⒱ Water Source
- ⚠ Value at Risk
- 🔴 Uncontrolled Fire Edge
- ⚫ Completed Line
- ⚡ Completed Dozer Line
- H · H · H Completed Hand Line
- R · R · R Road as Completed Line
- 🌊 RIVERS
- ⬜ Private and State
- ⊕ IRA

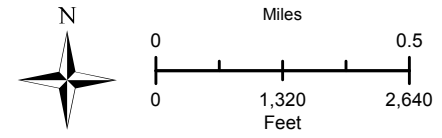




- Drop Point
- Ⓢ Staging Area
- Ⓜ Water Source
- 🔴 Uncontrolled Fire Edge
- ⚫ Completed Line
- ⚫ Completed Dozer Line
- ⚫ Completed Hand Line
- ⚫ Road as Completed Line
- 🌊 RIVERS
- 🌿 Wilderness
- ⚫ Private and State

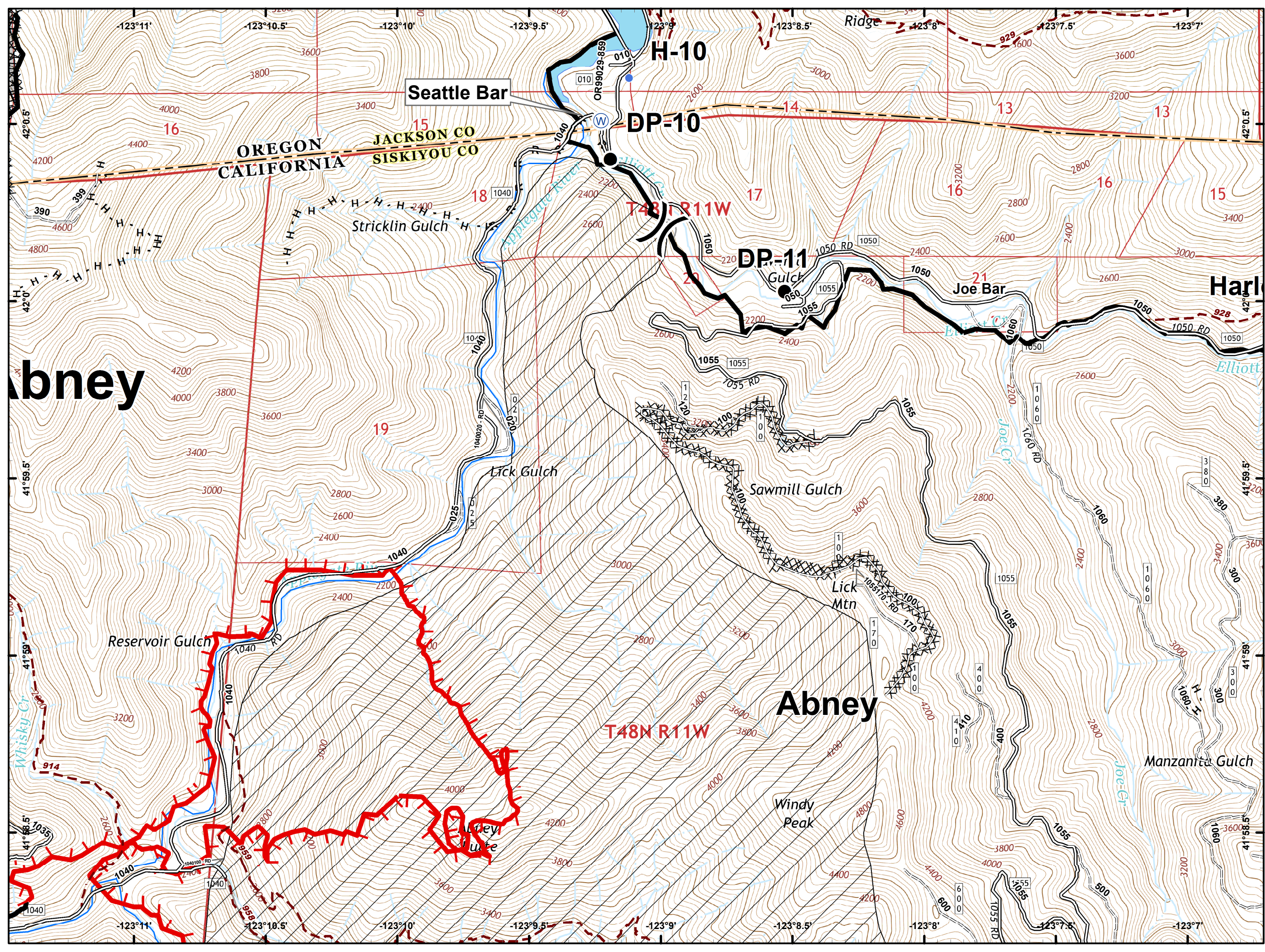
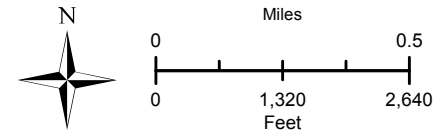
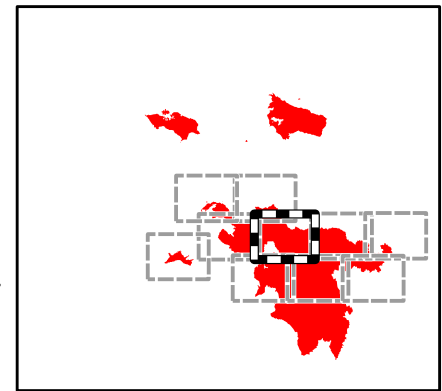


Abne



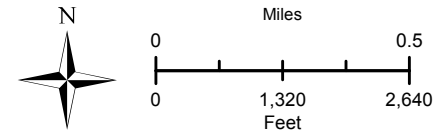
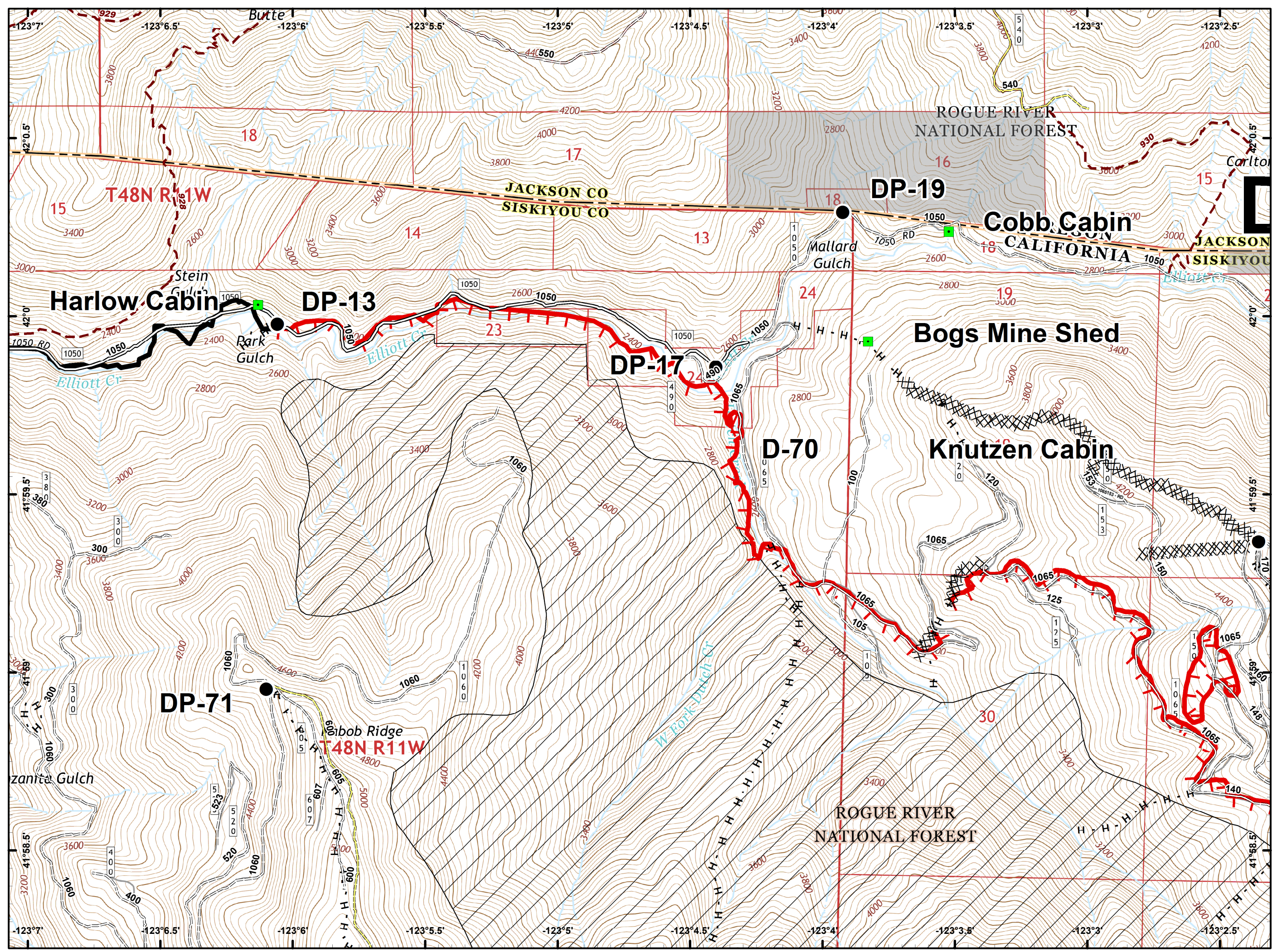


- Drop Point
- Helispot
- Ⓜ Water Source
- ⚠ Value at Risk
- ) Division Break
- 🔴 Uncontrolled Fire Edge
- ⚫ Completed Line
- ⚫ Completed Dozer Line
- ⚫ Completed Hand Line
- ⚫ Road as Completed Line
- 🌊 RIVERS
- ⚫ Private and State
- ⚫ IRA



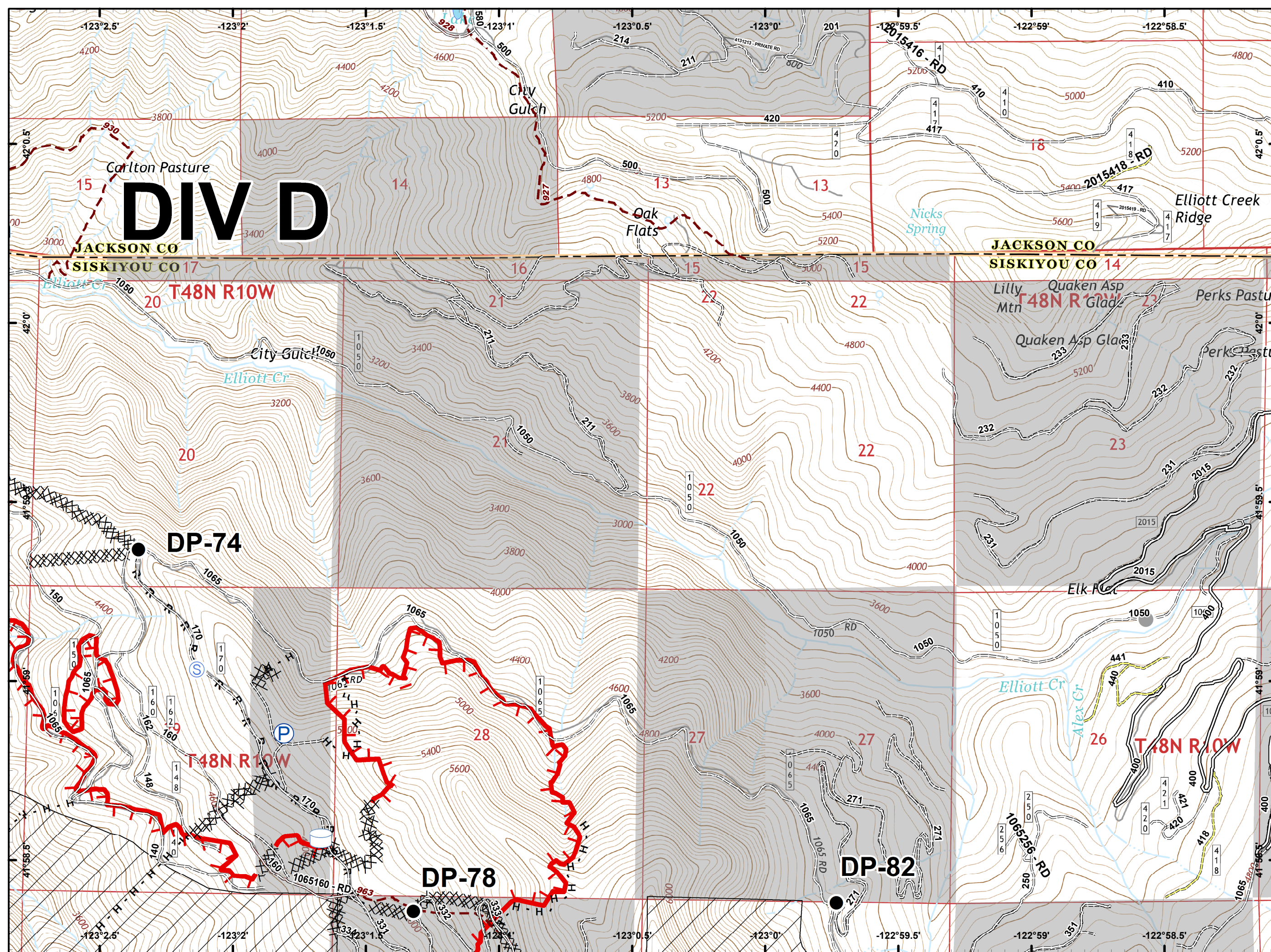


- Drop Point
- Landmark
- 🔴 Uncontrolled Fire Edge
- ⚫ Completed Line
- ⊗ Completed Dozer Line
- H · H · H Completed Hand Line
- R · R · R Road as Completed Line
- Private and State
- ⊕ IRA








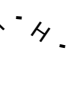






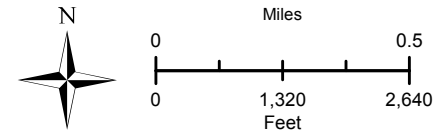
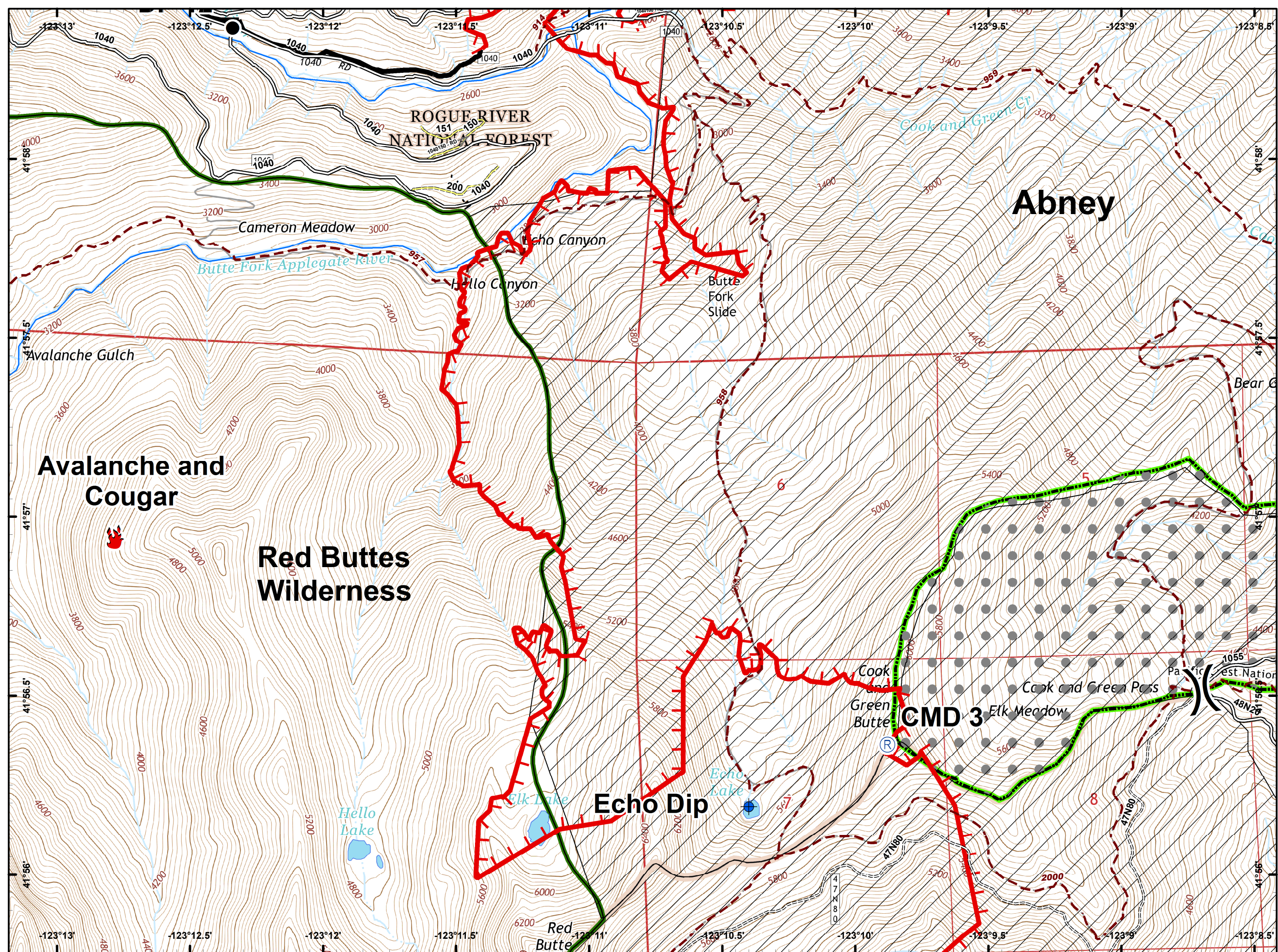


- Drop Point
- Ⓟ Pump
- Ⓢ Staging Area
- Ⓜ Water Tank
- Other
- 🔴 Uncontrolled Fire Edge
- XXXXX Completed Dozer Line
- H-H-H Completed Hand Line
- R-R-R Road as Completed Line
- Private and State
- IRA



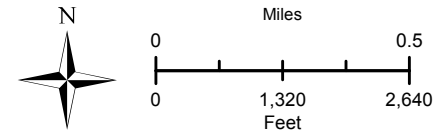
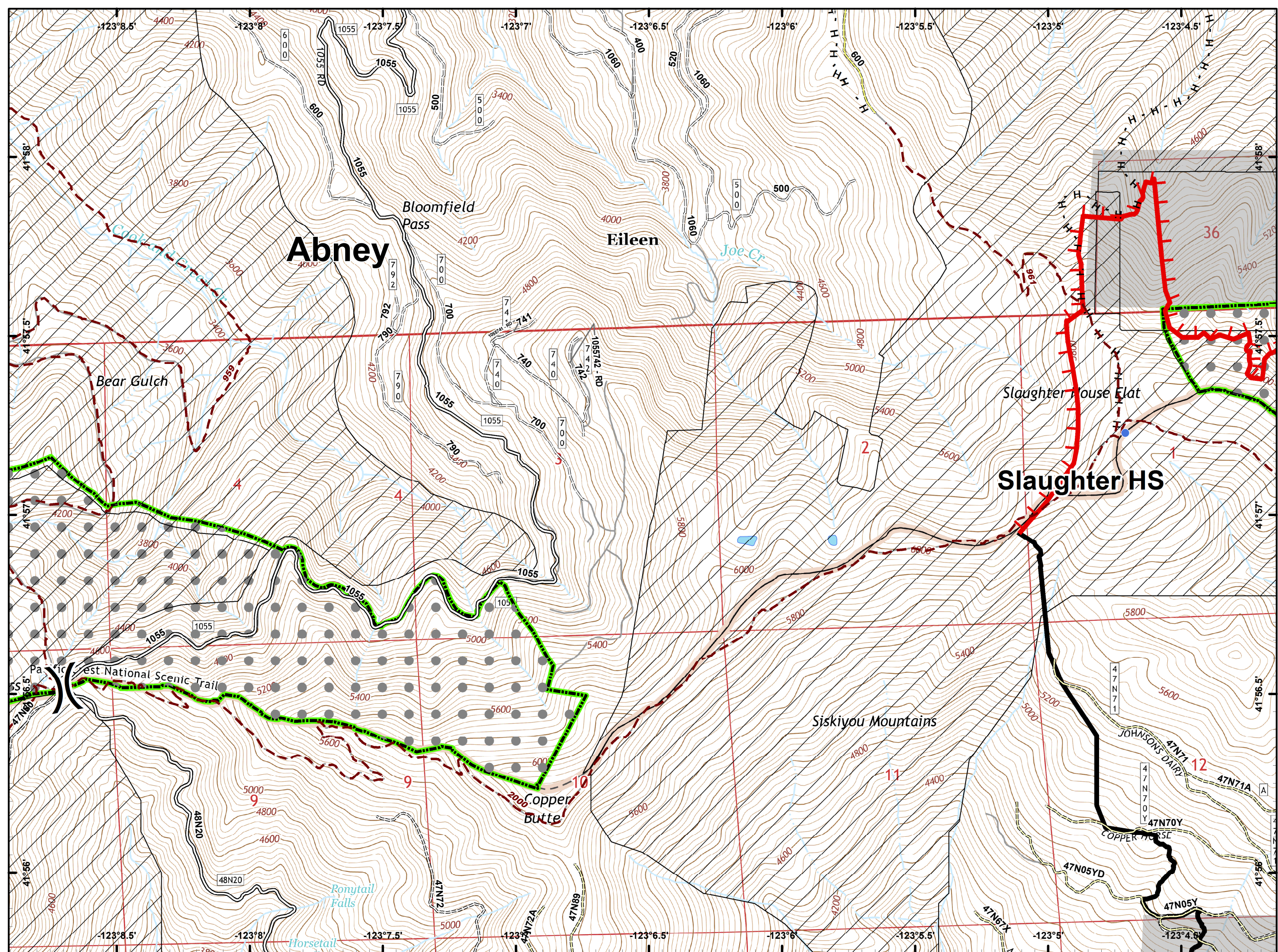


-  Dip Site
-  Drop Point
-  Fire Location
-  Repeater
-  Division Break
-  Uncontrolled Fire Edge
-  Completed Line
-  Completed Hand Line
-  RIVERS
-  Wilderness
-  Botanical Areas
-  IRA



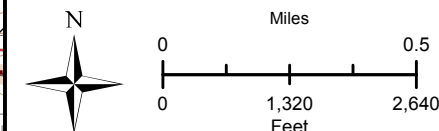
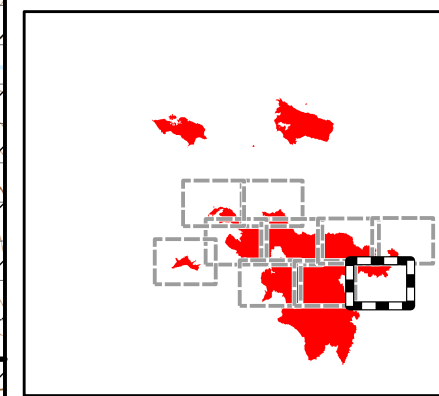
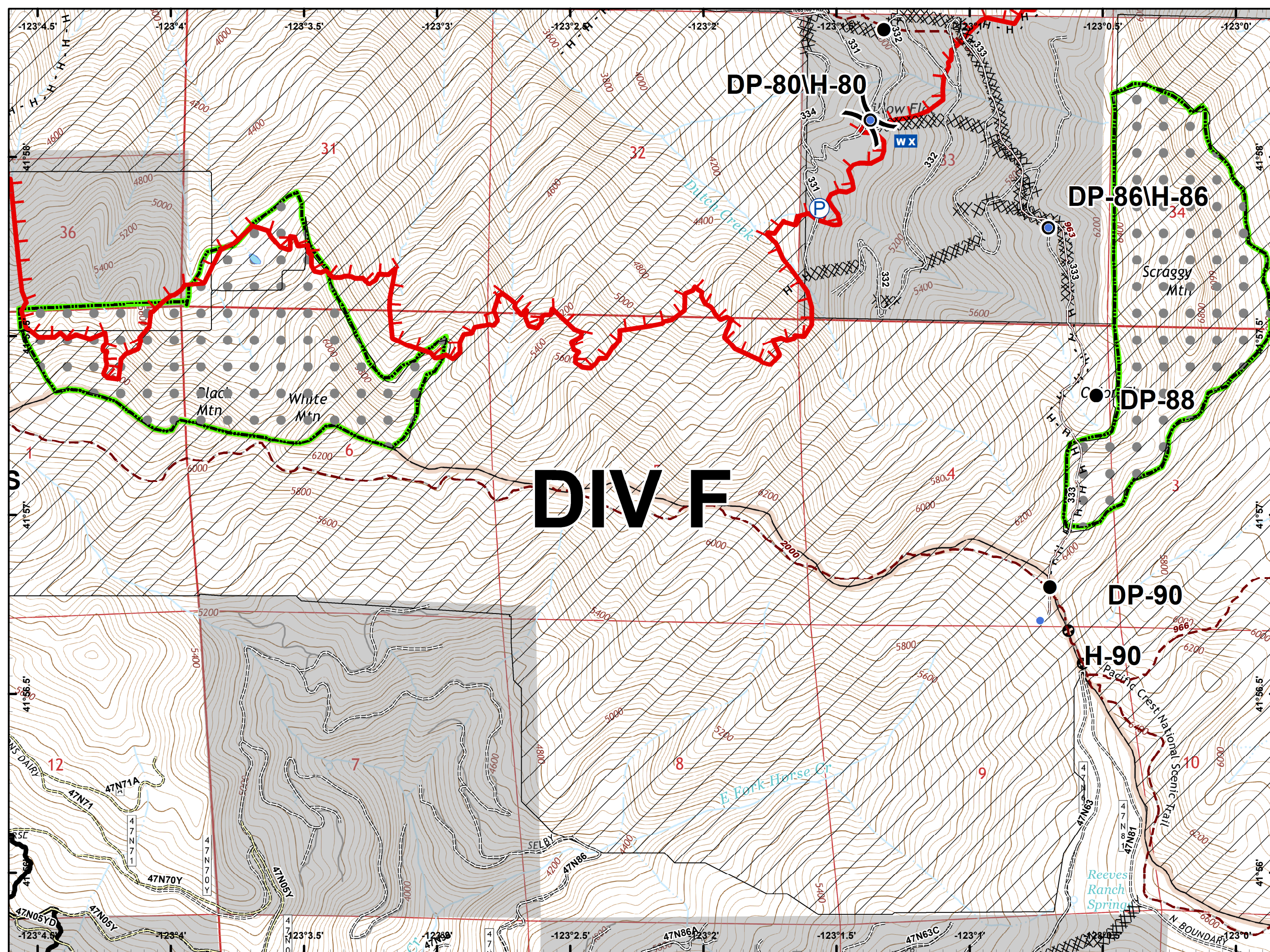


- Helispot
- ⎵ Division Break
- 🔴 Uncontrolled Fire Edge
- ⚫ Completed Line
- ⋯ Completed Hand Line
- 🟢 Botanical Areas
- ⊕ IRA








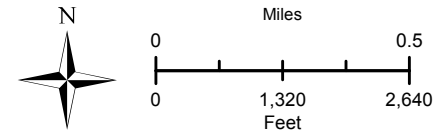
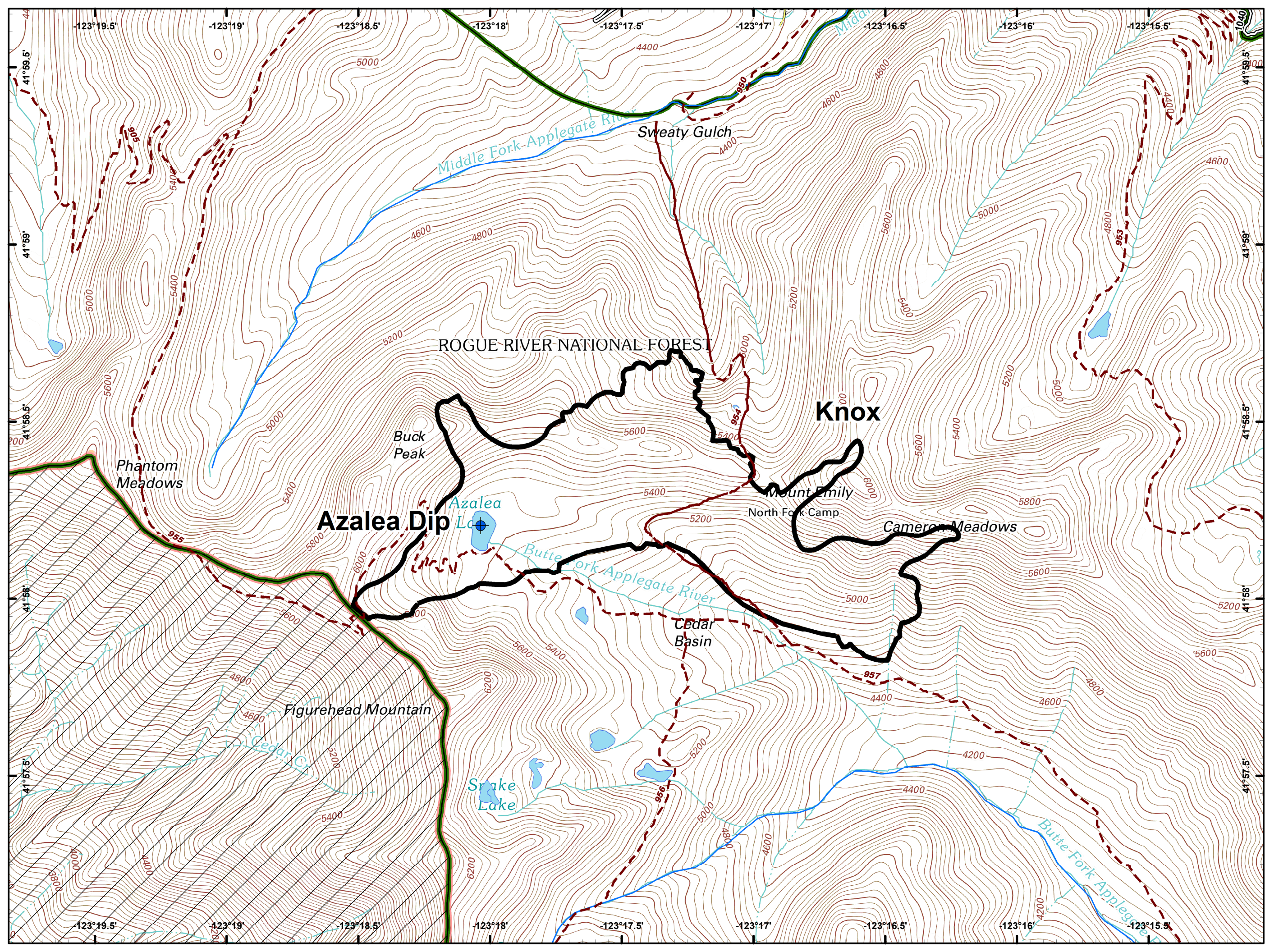


- Drop Point
- Helispot
- WX Mobile Weather Unit
- P Pump
- ) Division Break
- Uncontrolled Fire Edge
- Completed Line
- Completed Dozer Line
- Completed Hand Line
- R-R-R Road as Completed Line
- Other
- Botanical Areas
- IRA





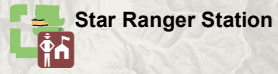
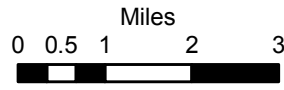
-  Dip Site
-  Completed Line
-  RIVERS
-  Wilderness
-  IRA





# MILLER COMPLEX OR-RSF-000647 TRANSPORTATION MAP

UTM Zone 10 NAD83



Star Ranger Station

Siskiyou Mountains  
Ranger District

- Fire Areas

**S\_USA.Road\_MVUM**

OPERATIONA

- Mainline
- Maintained Spur Road
- Red Buttes Wilderness Area

Grants  
Pass

Medford

Creedence

Burnt Peak

Steamboat

Abney

Grants  
Pass/  
Oregon and  
California  
Coast

Road 170  
deadends  
at DP-86

