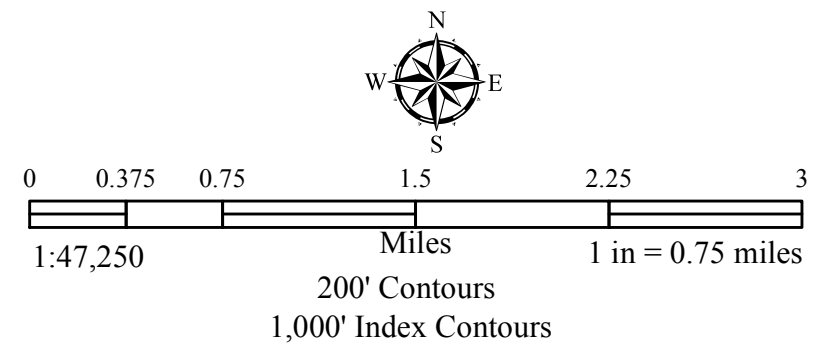
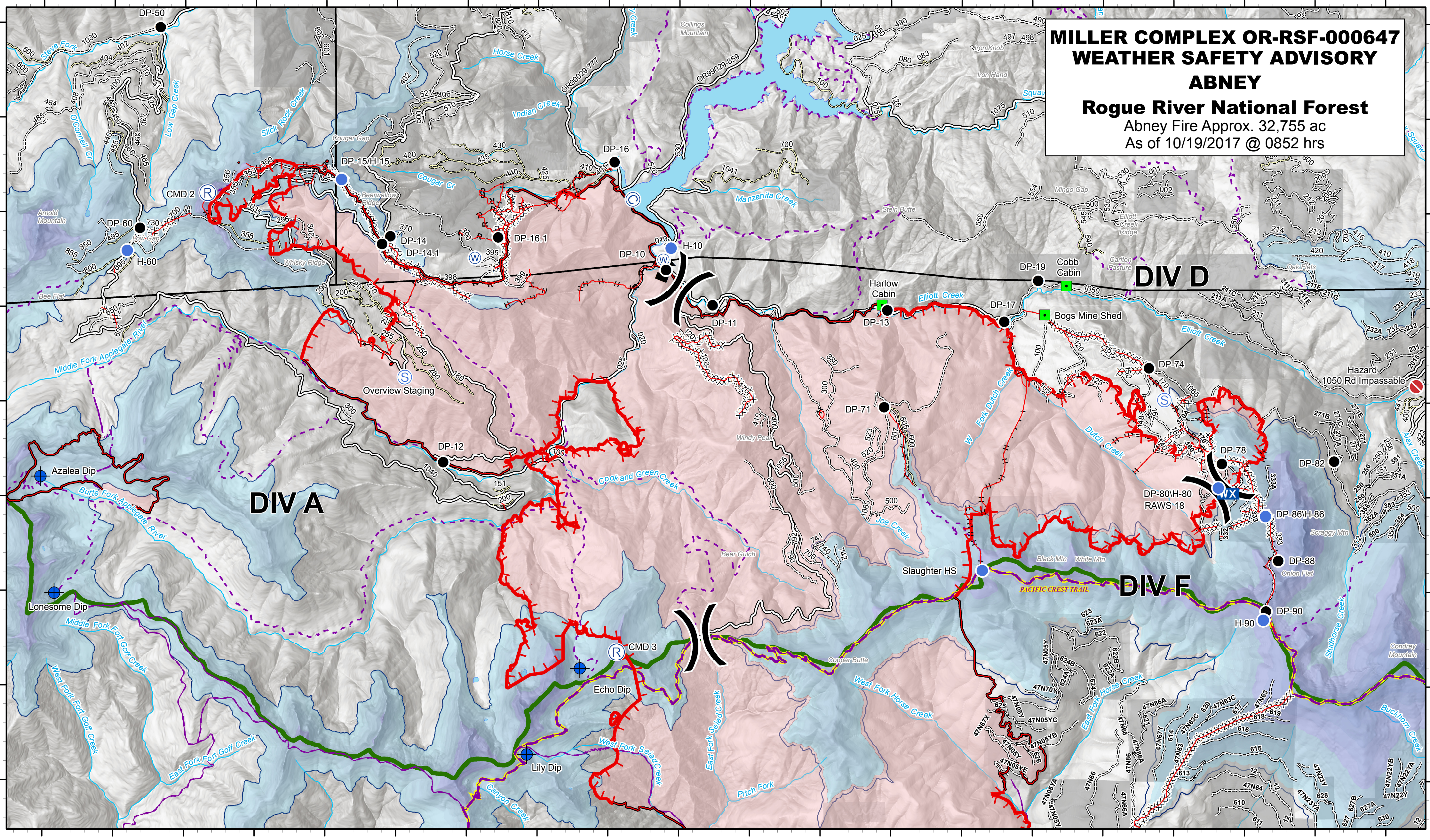


BE ADVISED: EXPECT INCLEMENT WINTER WEATHER ON RIDGE TOPS, INCLUDING SURFACE WINDS @ 35 MPH (GUSTS 55 MPH), AND PERSISTANT SNOW ACCUMULATION ABOVE 5000' ELEV. STARTING FRI 10/20 @ 00:00 HRS

**MILLER COMPLEX OR-RSF-000647
WEATHER SAFETY ADVISORY
ABNEY
Rogue River National Forest
Abney Fire Approx. 32,755 ac
As of 10/19/2017 @ 0852 hrs**



Persistent Snow Elevations

5000 ft	5200 ft	5400 ft	5600 ft	5800 ft	6000 ft	6200 ft	6400 ft	6600 ft	6800 ft	7000 ft	7200 ft	7400 ft
---------	---------	---------	---------	---------	---------	---------	---------	---------	---------	---------	---------	---------

- Uncontrolled Fire Edge
- Completed Line
- Completed Dozer Line
- Completed Hand Line
- Road as Completed Line
- TFR Boundary
- Division Break
- Helispot
- Drop Point
- Water Source
- Hazard Road Impassable
- Private and State
- Botanical Areas
- Wilderness
- Timber Sale
- Forest Boundary
- Inventory Roadless Area
- Mobile Weather Unit
- Value at Risk
- Lookout
- Landmark