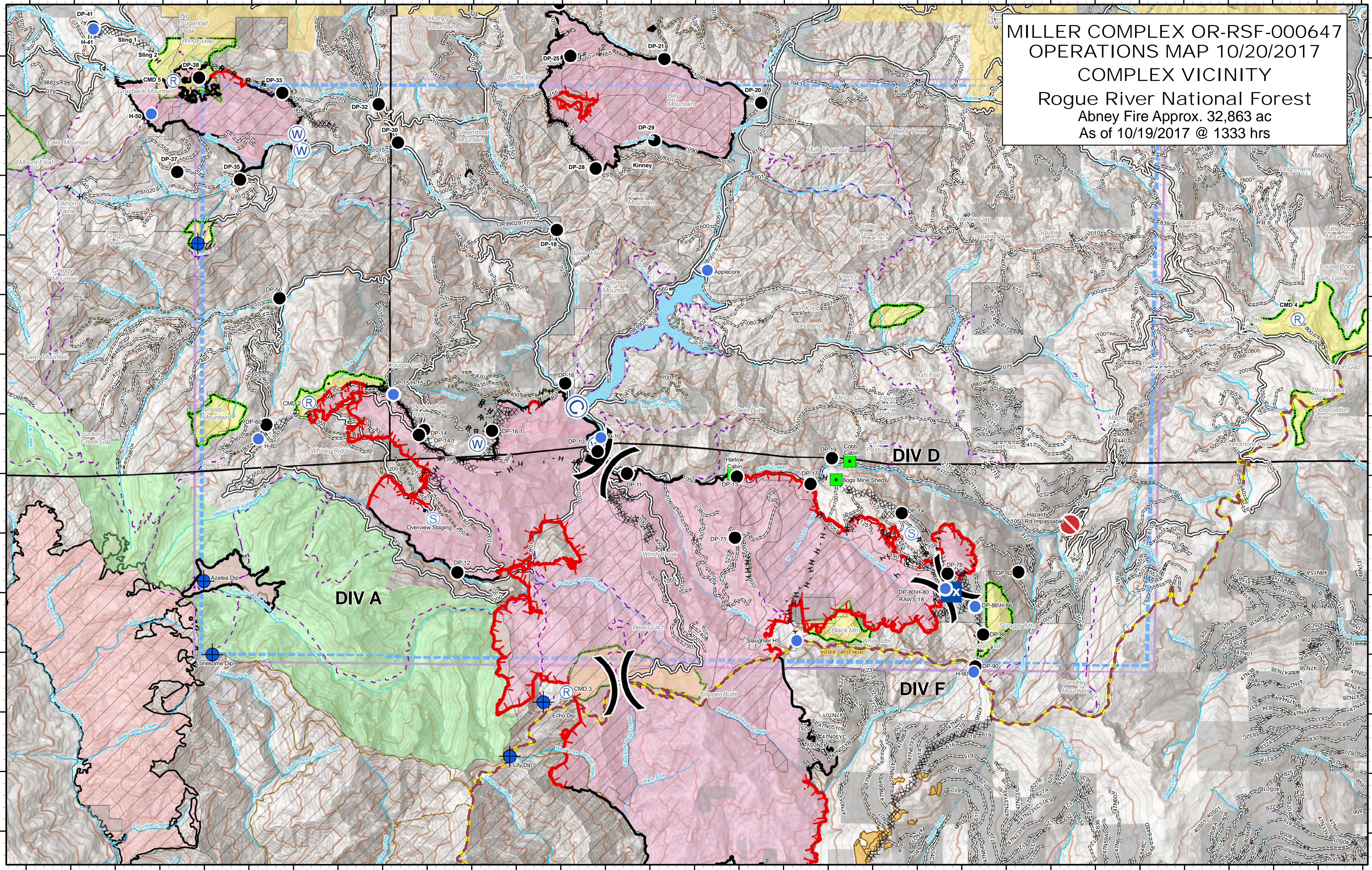




MILLER COMPLEX OR-RSF-000647
 OPERATIONS MAP 10/20/2017
 COMPLEX VICINITY
 Rogue River National Forest
 Abney Fire Approx. 32,863 ac
 As of 10/19/2017 @ 1333 hrs

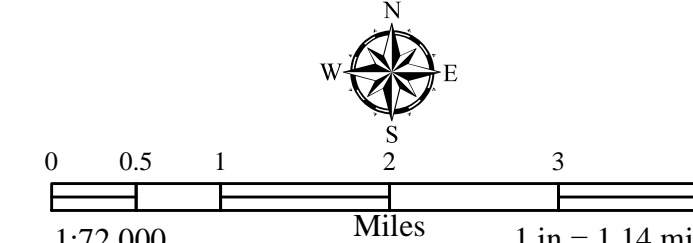


Northwest IMT 6 GIS Unit
 October 19, 2017, 1333 hrs

OPS_Complex_2017_MillerComplex_ORRSF000647_Arch_Cand_land.mxd
 NAD 1983 UTM Zone 10N

Feature/Category	Label	Lat	Long	Feature/Category	Label	Lat	Long	Feature/Category	Label	Lat	Long
Drop Site	Miller Dip	42° 3.867' N	123° 18.195' W	Drop Point	DP-18	42° 4.111' N	123° 10.117' W	Helispot	H-15	42° 1.349' N	123° 13.786' W
Drop Site	Echo Dip	41° 56.190' N	123° 10.400' W	Drop Point	DP-14	42° 0.668' N	123° 13.210' W	Helispot	H-50	42° 6.043' N	123° 19.252' W
Drop Site	Lily Dip	41° 55.280' N	123° 11.150' W	Drop Point	DP-11	42° 0.027' N	123° 15.500' W	Helispot	H-80	41° 58.200' N	123° 1.372' W
Drop Site	Azalea Dip	41° 58.207' N	123° 18.030' W	Drop Point	DP-13	41° 59.978' N	123° 16.058' W	Helispot	H-86	41° 57.803' N	123° 0.704' W
Drop Site	Lonesome Dip	41° 56.976' N	123° 17.839' W	Drop Point	DP-17	41° 59.857' N	123° 4.402' W	Helispot	H-90	41° 56.705' N	123° 0.735' W
Drop Point	Bolan Dip	42° 1.310' N	123° 27.570' W	Drop Point	DP-19	42° 0.292' N	123° 3.923' W	Helispot	H-10	42° 0.630' N	123° 9.120' W
Drop Point	DP-10	42° 0.400' N	123° 9.191' W	Drop Point	DP-60	42° 0.830' N	123° 16.638' W	Helispot	H-60	42° 0.590' N	123° 16.817' W
Drop Point	DP-28	42° 5.145' N	123° 9.245' W	Drop Point	DP-50	42° 2.953' N	123° 16.355' W	Incident Command Post		42° 14.058' N	123° 3.843' W
Drop Point	DP-25	42° 7.031' N	123° 9.822' W	Drop Point	DP-90	41° 56.798' N	123° 0.698' W	Landmark	Bogs Mine Shed	42° 15.929' N	123° 3.828' W
Drop Point	DP-33	42° 7.970' N	123° 10.072' W	Drop Point	DP-82	41° 58.381' N	123° 59.730' W	Landmark	Harlow Cabin	42° 6.331' N	123° 1.372' W
Drop Point	DP-21	42° 6.982' N	123° 7.703' W	Drop Point	DP-74	41° 59.388' N	123° 2.354' W	Landmark	Cobb Cabin	42° 0.237' N	123° 3.523' W
Drop Point	DP-38	42° 6.649' N	123° 18.181' W	Drop Point	DP-78	41° 58.357' N	123° 3.322' W	Lookout	Applegate	42° 2.357' N	123° 8.547' W
Drop Point	DP-32	42° 6.212' N	123° 14.133' W	Drop Point	DP-80	41° 58.104' N	123° 1.372' W	Repeater	CMD 1	42° 11.785' N	123° 9.089' W
Drop Point	DP-30	42° 5.568' N	123° 13.698' W	Drop Point	DP-86	41° 57.893' N	123° 0.704' W	Repeater	CMD 2	42° 1.206' N	123° 15.681' W
Drop Point	DP-35	42° 4.944' N	123° 17.252' W	Drop Point	DP-88	41° 57.334' N	123° 0.524' W	Repeater	CMD 3	41° 56.363' N	123° 9.880' W
Drop Point	DP-33	42° 6.398' N	123° 16.306' W	Drop Point	DP-71	41° 58.953' N	123° 6.100' W	Repeater	CMD 4	42° 2.636' N	123° 53.449' W
Drop Point	DP-14	42° 0.390' N	123° 13.995' W	Drop Point	DP-16.1	42° 0.340' N	123° 11.560' W	Repeater	DP-16.1	42° 5.990' N	123° 8.755' W
Drop Point	DP-16	42° 1.539' N	123° 9.923' W	Fire Location	Avalanche Cougar	41° 56.945' N	123° 12.779' W	Sling Site	Slings 1	42° 2.210' N	123° 19.587' W
Drop Point	DP-41	42° 7.498' N	123° 20.572' W	Fire Location	Redwood	42° 1.222' N	123° 26.913' W	Sling Site	Slings 2	42° 6.955' N	123° 19.127' W
Drop Point	DP-20	42° 6.240' N	123° 5.522' W	Helibase	Cave Junction	40° 6.000' N	123° 41.000' W	Mobile Weather Unit	RAWS 18	41° 58.10644' N	123° 1.37502' W
Drop Point	DP-12	41° 58.865' N	123° 12.339' W	Helispot	Applegate	42° 3.044' N	123° 1.000' W	Other	Hazard Road Impassable	41° 59.1751' N	122° 58.5676' W
Drop Point	DP-29	42° 5.618' N	123° 7.924' W	Helispot	Hamilton	42° 14.054' N	123° 3.704' W				
Drop Point	DP-37	42° 5.069' N	123° 18.666' W	Helispot	H-41	42° 7.460' N	123° 20.566' W				
Drop Point	DP-15/H-15	42° 1.349' N	123° 13.786' W	Helispot	Slaughter HS	41° 57.230' N	123° 4.710' W				



1:72,000
 200' Contours
 1,000' Index Contours

	Uncontrolled Fire Edge		Division Break		Private and State		Mobile Weather Unit
	Completed Line		Botanical Areas		Wilderness		Value at Risk
	Completed Dozer Line		Timber Sale		Forest Boundary		Lookout
	Completed Hand Line		Inventory Roadless Area		Pacific Crest Trail		
	Road as Completed Line						
	TFR Boundary						