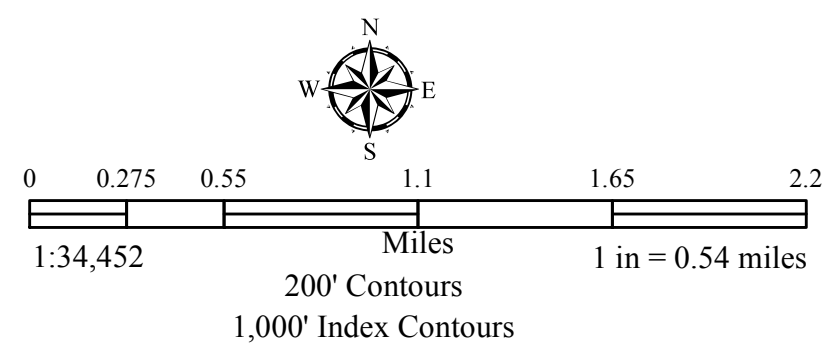
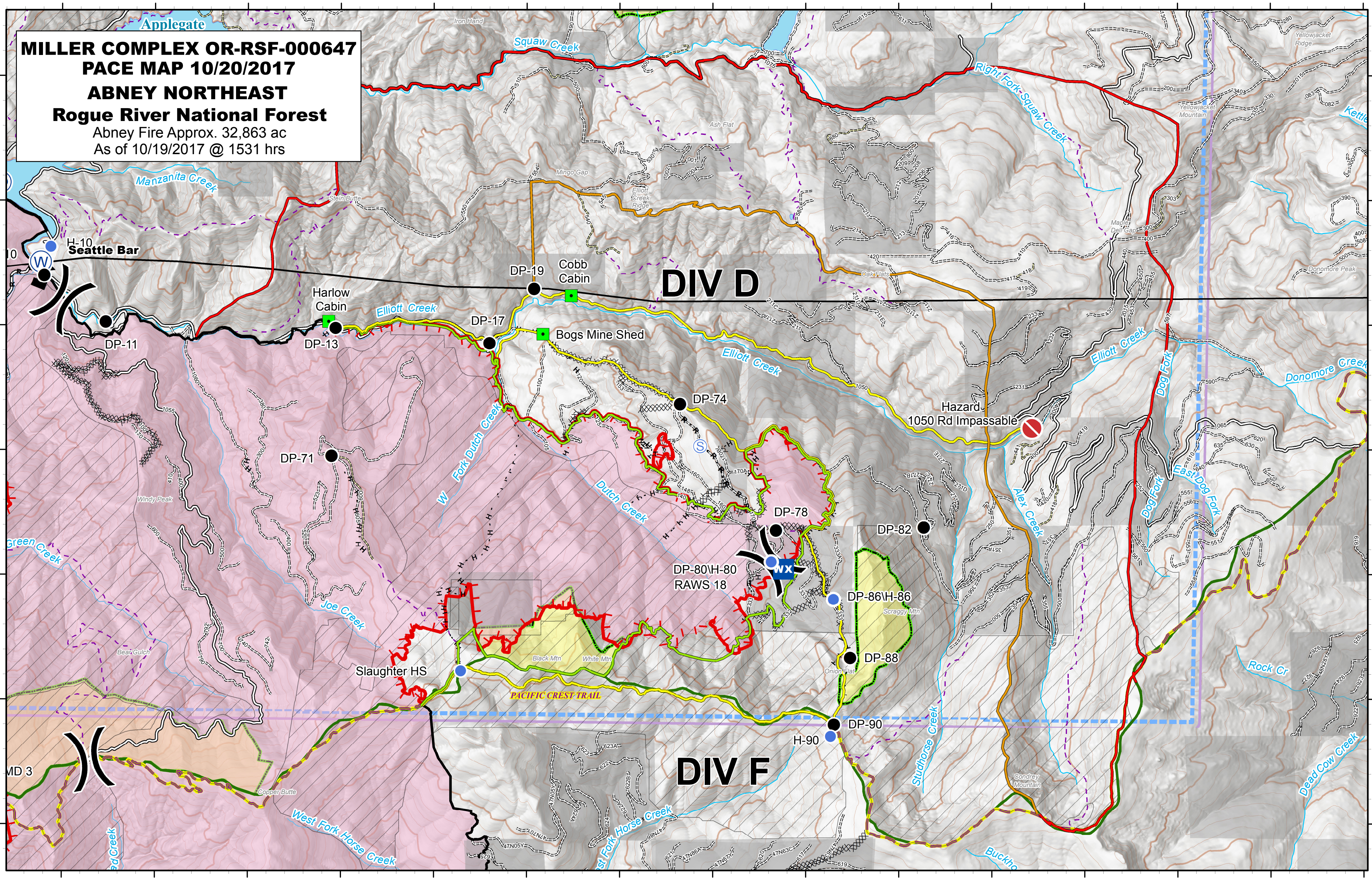


**MILLER COMPLEX OR-RSF-000647**  
**PACE MAP 10/20/2017**  
**ABNEY NORTHEAST**  
**Rogue River National Forest**  
 Abney Fire Approx. 32,863 ac  
 As of 10/19/2017 @ 1531 hrs



FeatureCategory	Label	Lat	Long	FeatureCategory	Label	Lat	Long	FeatureCategory	Label	Lat	Long
Dip Site	Miller Dip	42° 3.867' N	123° 18.195' W	Drop Point	DP-18	42° 4.111' N	123° 10.117' W	Helispot	H-15	42° 1.349' N	123° 13.796' W
Dip Site	Echo Dip	41° 56.190' N	123° 10.400' W	Drop Point	DP-14-13	42° 0.668' N	123° 13.210' W	Helispot	H-50	42° 6.943' N	123° 13.252' W
Dip Site	Lily Dip	41° 55.280' N	123° 11.150' W	Drop Point	DP-11	42° 0.027' N	123° 8.530' W	Helispot	H-80	41° 58.104' N	123° 1.372' W
Dip Site	Azalea Dip	41° 58.207' N	123° 18.036' W	Drop Point	DP-13	41° 59.978' N	123° 6.058' W	Helispot	H-86	41° 57.803' N	123° 0.704' W
Dip Site	Lonesome Dip	41° 56.976' N	123° 17.839' W	Drop Point	DP-17	41° 59.857' N	123° 4.402' W	Helispot	H-90	41° 56.705' N	123° 0.735' W
Dip Site	Bowler Dip	42° 1.219' N	123° 22.570' W	Drop Point	DP-19	42° 0.292' N	123° 3.923' W	Helispot	H-10	42° 0.630' N	123° 0.120' W
Drop Point	DP-10	42° 0.400' N	123° 9.191' W	Drop Point	DP-60	42° 0.830' N	123° 16.638' W	Helispot	H-60	42° 0.593' N	123° 16.817' W
Drop Point	DP-28	42° 5.145' N	123° 9.245' W	Drop Point	DP-50	42° 2.953' N	123° 16.355' W	Incident Command Post	Incident Command Post	42° 14.058' N	123° 3.943' W
Drop Point	DP-25	42° 7.031' N	123° 9.822' W	Drop Point	DP-90	41° 56.798' N	123° 0.698' W	Landmark	Bogs Mine Shed	41° 59.929' N	123° 3.828' W
Drop Point	DP-23	42° 7.917' N	123° 10.072' W	Drop Point	DP-82	41° 58.381' N	123° 59.733' W	Landmark	Harlow Cabin	42° 0.032' N	123° 6.133' W
Drop Point	DP-21	42° 6.982' N	123° 7.703' W	Drop Point	DP-74	41° 59.368' N	123° 2.354' W	Landmark	Cobb Cabin	42° 0.237' N	123° 3.523' W
Drop Point	DP-38	42° 6.649' N	123° 18.181' W	Drop Point	DP-78	41° 58.357' N	123° 1.322' W	Lookout	Onion Flat	42° 2.357' N	123° 5.547' W
Drop Point	DP-32	42° 6.212' N	123° 15.521' W	Drop Point	DP-80	41° 58.100' N	123° 1.322' W	Repeater	CM2 1	42° 11.785' N	123° 0.080' W
Drop Point	DP-30	42° 5.568' N	123° 13.688' W	Drop Point	DP-86	41° 57.803' N	123° 0.704' W	Repeater	CM2 2	42° 1.206' N	123° 15.681' W
Drop Point	DP-35	42° 4.944' N	123° 12.252' W	Drop Point	DP-88	41° 57.334' N	123° 0.524' W	Repeater	CM2 3	41° 56.363' N	123° 9.880' W
Drop Point	DP-33	42° 6.398' N	123° 16.396' W	Drop Point	DP-71	41° 56.925' N	123° 6.100' W	Repeater	CM2 4	42° 2.616' N	123° 11.440' W
Drop Point	DP-16	42° 0.749' N	123° 13.095' W	Drop Point	DP-16-13	42° 0.740' N	123° 11.567' W	Repeater	CM2 5	42° 6.992' N	123° 18.759' W
Drop Point	DP-14	42° 1.539' N	123° 9.923' W	Fire Location	Avalanche Couser	41° 56.945' N	123° 12.779' W	Sling Site	Sling 1	42° 7.210' N	123° 10.587' W
Drop Point	DP-41	42° 7.498' N	123° 20.572' W	Fire Location	Redwood	42° 1.222' N	123° 26.913' W	Sling Site	Sling 2	42° 6.955' N	123° 19.127' W
Drop Point	DP-20	42° 6.492' N	123° 15.521' W	Helispot	Helispot	40° 6.000' N	123° 41.002' W	Mobile Weather Unit	RAWS 18	41° 58.1064' N	123° 1.3702' W
Drop Point	DP-12	41° 58.365' N	123° 12.339' W	Helispot	Applegate	42° 3.394' N	123° 7.007' W	Other	Hazard: Road Impassable	41° 59.1751' N	122° 58.5678' W
Drop Point	DP-29	42° 5.618' N	123° 7.924' W	Helispot	Hamilton	42° 14.054' N	123° 3.704' W				
Drop Point	DP-37	42° 5.349' N	123° 18.646' W	Helispot	H-41	42° 7.440' N	123° 20.466' W				
Drop Point	DP-15H-15	42° 1.349' N	123° 13.796' W	Helispot	Slaughter HS	41° 57.230' N	123° 4.710' W				

**Uncontrolled Fire Edge** (Red dashed line)  
**Completed Line** (Black solid line)  
**Completed Dozer Line** (Black dashed line with X's)  
**Completed Hand Line** (H - H)  
**Road as Completed Line** (R - R)  
**TFR Boundary** (Blue dashed line)

**Division Break** (Black line with a break symbol)  
**Helispot** (Blue circle)  
**Drop Point** (Black circle)  
**Water Source** (Blue circle with W)  
**Mobile Weather Unit** (Blue circle with WX)  
**Value at Risk** (Black triangle with exclamation mark)  
**Lookout** (Blue circle with S)  
**Landmark** (Green square)

**Private and State** (Grey hatched area)  
**Botanical Areas** (Green hatched area)  
**Wilderness** (Light green hatched area)  
**Timber Sale** (Orange hatched area)  
**Forest Boundary** (Green dashed line)  
**Inventory Roadless Area** (White hatched area)

**PACE Lines**  
**Primary** (Green line)  
**Alternate** (Blue line)  
**Contingency** (Red line)

**Legend**  
**Uncontrolled Fire Edge**  
**Completed Line**  
**Completed Dozer Line**  
**H - H Completed Hand Line**  
**R - R Road as Completed Line**  
**TFR Boundary**  
**Division Break**  
**Helispot**  
**Drop Point**  
**Water Source**  
**Mobile Weather Unit**  
**Value at Risk**  
**Lookout**  
**Landmark**  
**Private and State**  
**Botanical Areas**  
**Wilderness**  
**Timber Sale**  
**Forest Boundary**  
**Inventory Roadless Area**  
**PACE Lines**  
**Primary**  
**Alternate**  
**Contingency**