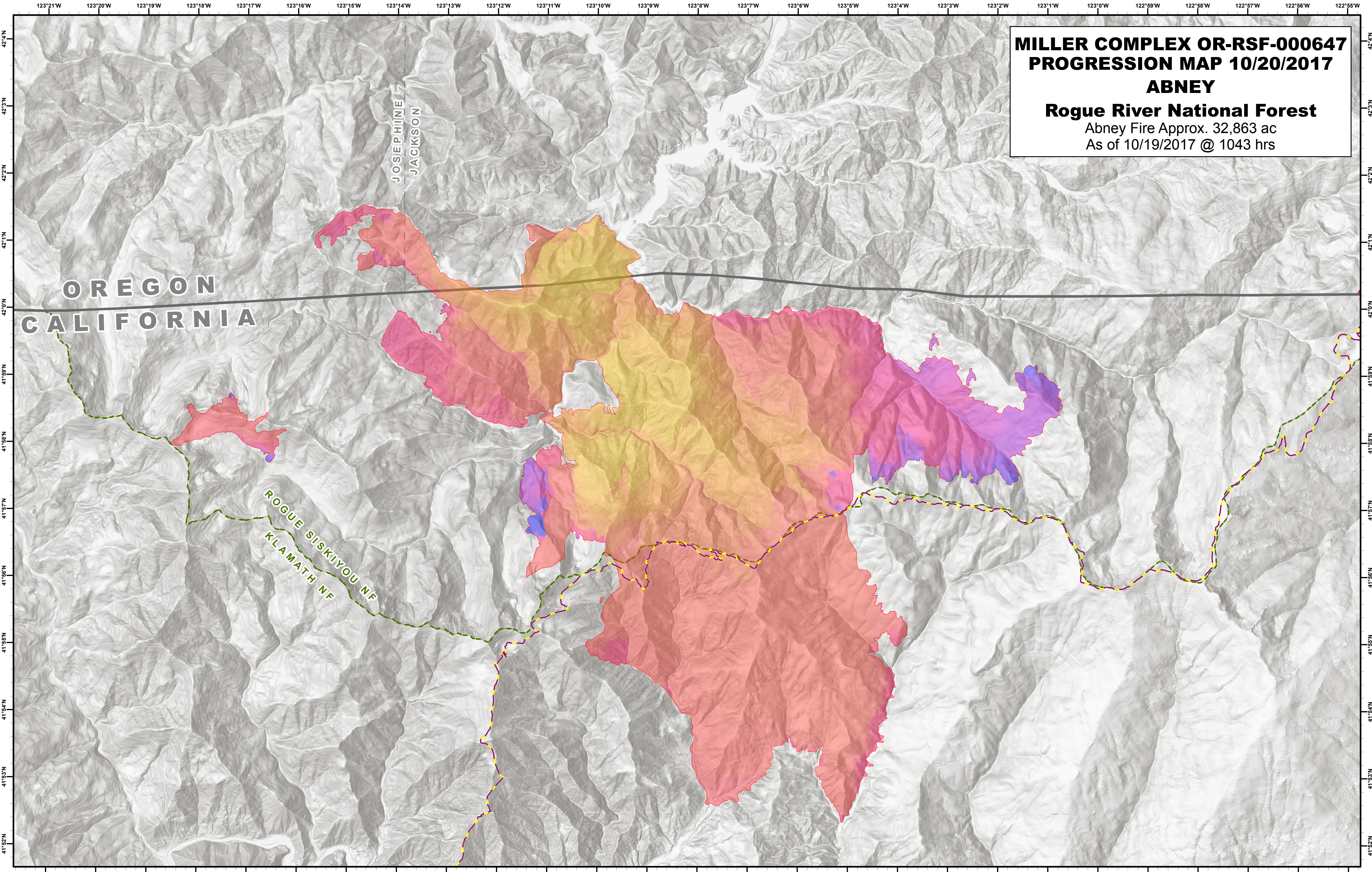
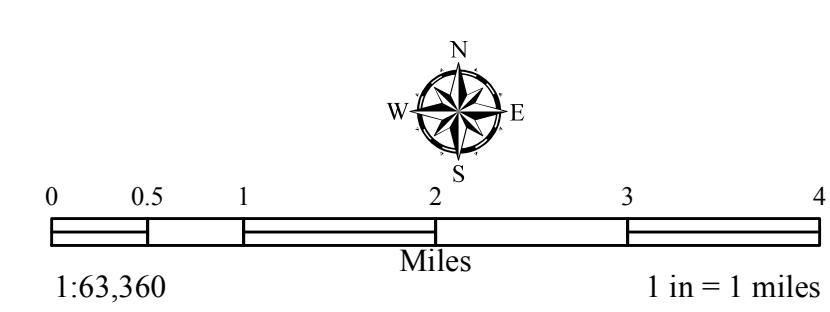


**MILLER COMPLEX OR-RSF-000647
PROGRESSION MAP 10/20/2017
ABNEY**
Rogue River National Forest
Abney Fire Approx. 32,863 ac
As of 10/19/2017 @ 1043 hrs



Northwest IMT 6 GIS Unit
October 19, 2017, 1043 hrs



Abney Knox Progression		prog_date, Acres_Round	
	2017-08-17, 291		2017-08-21, 1077
	2017-08-19, 1037		2017-08-26, 624
	2017-08-24, 373		2017-08-31, 463
	2017-08-25, 243		2017-09-07, 1648
	2017-08-29, 1666		2017-09-15, 582
	2017-08-30, 553		2017-09-27, 234
	2017-09-02, 1589		2017-10-03, 127
	2017-09-03, 5		2017-10-04, 122
	2017-09-04, 8968		2017-10-05, 45
	2017-09-06, 4573		2017-10-06, 115
	2017-09-09, 211		2017-10-07, 208
	2017-09-10, 79		2017-10-08, 14
	2017-09-16, 346		2017-10-09, 446
	2017-09-18, 456		2017-10-10, 136
	2017-09-20, 173		2017-10-11, 705
	2017-09-29, 391		2017-10-12, 10
	2017-10-01, 248		2017-10-14, 183
	2017-10-03, 127		2017-10-15, 60
	2017-10-07, 208		2017-10-16, 85
	2017-10-08, 14		2017-10-17, 55
	2017-10-11, 705		2017-10-18, 111

- Highway
- Other Mainline Road
- Pacific Crest Trail
- State Boundary
- County Boundary
- Forest Administrative Boundary