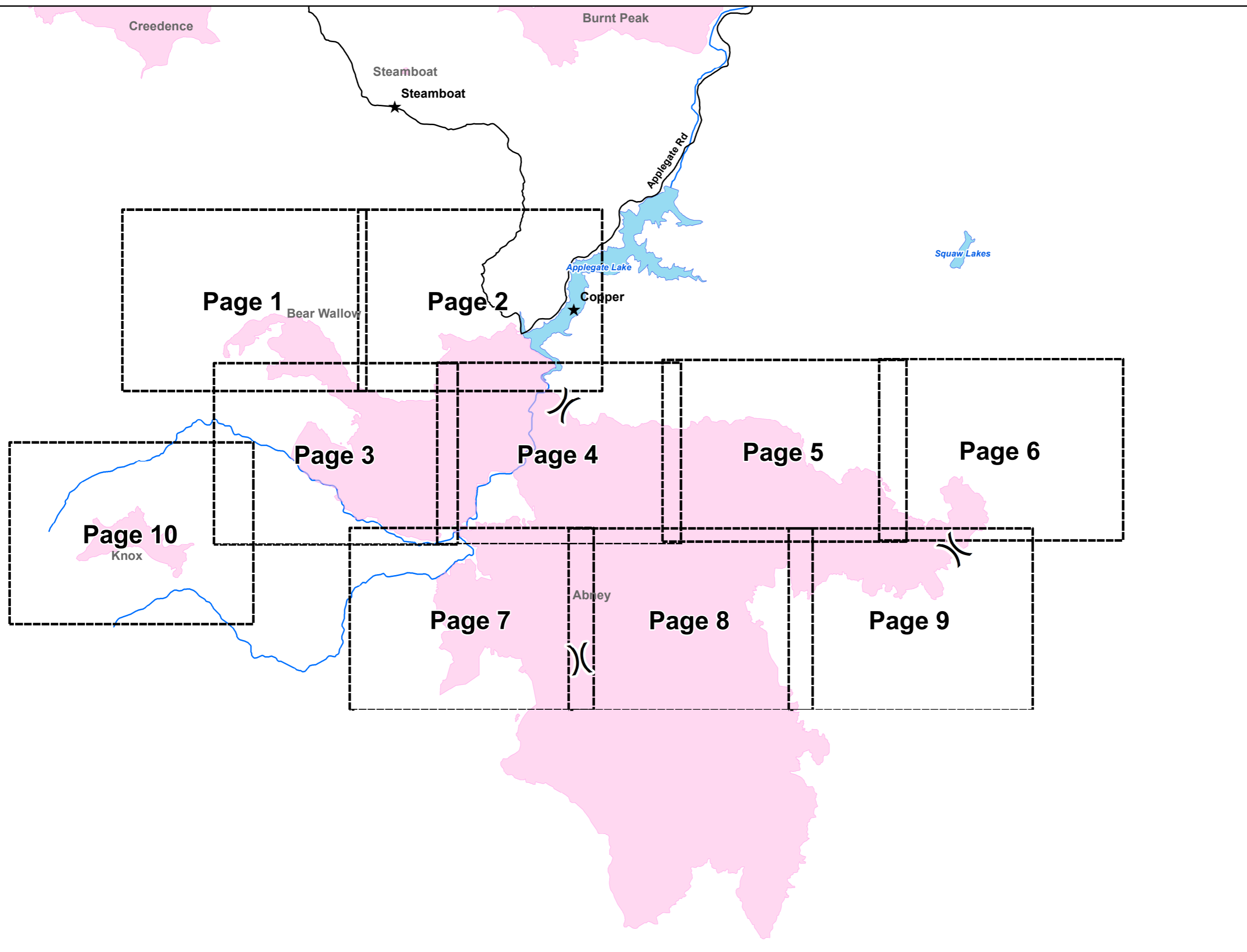
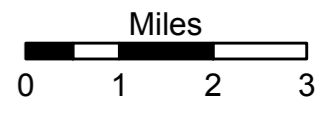


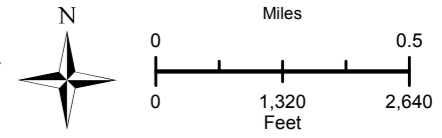
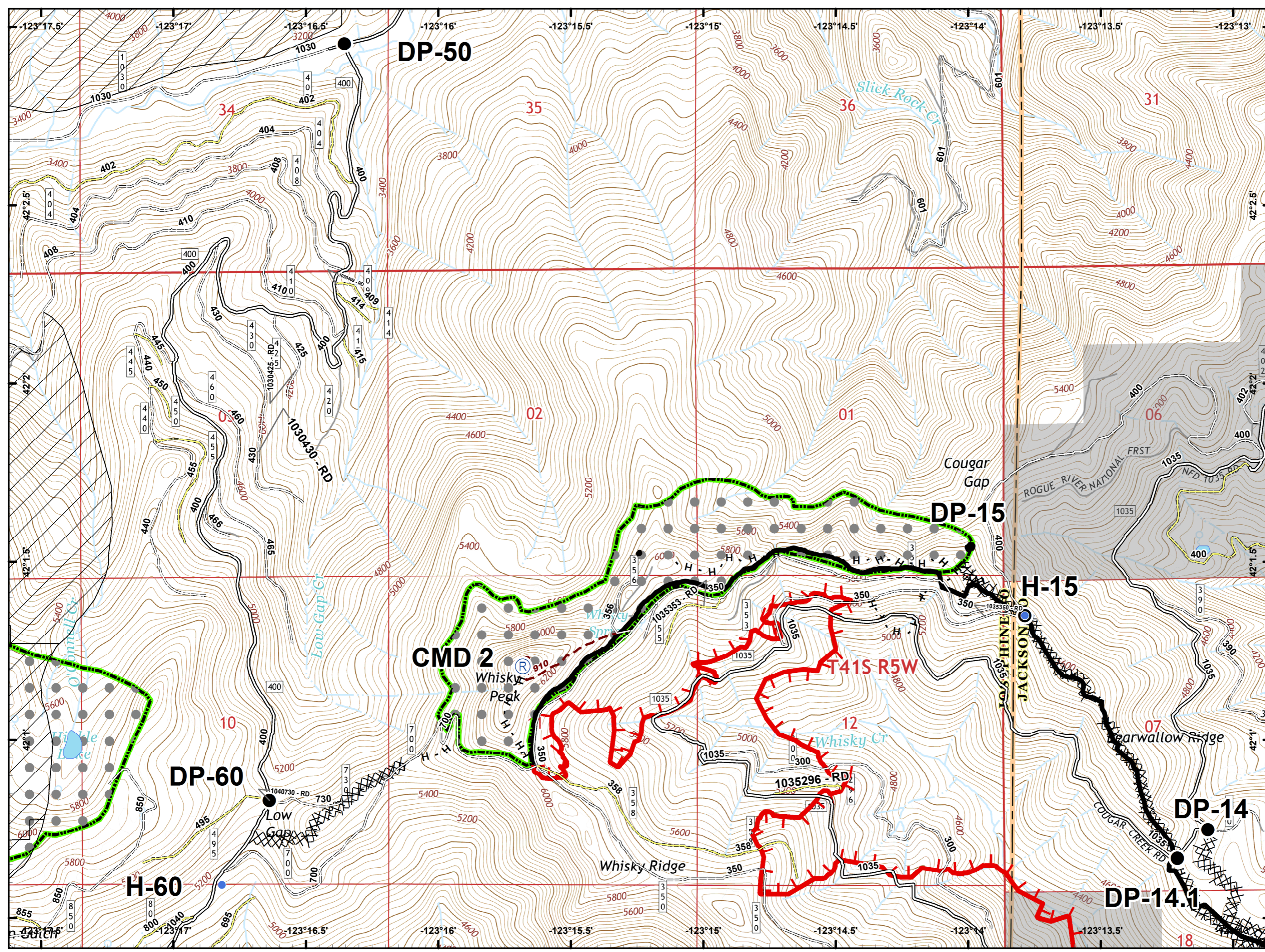
**Miller Complex
OR-RSF-000647
Rogue River Siskiyou
National Forest
October 22, 2017**









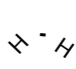
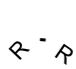





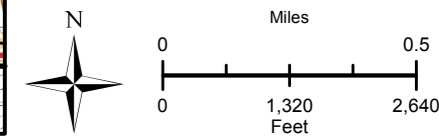
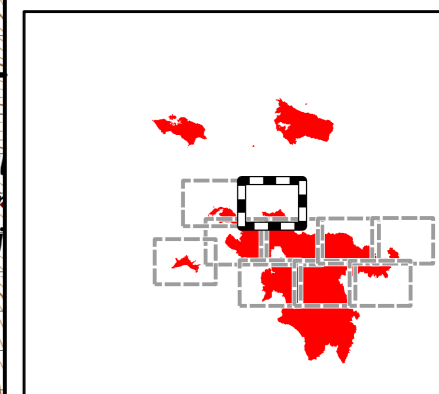
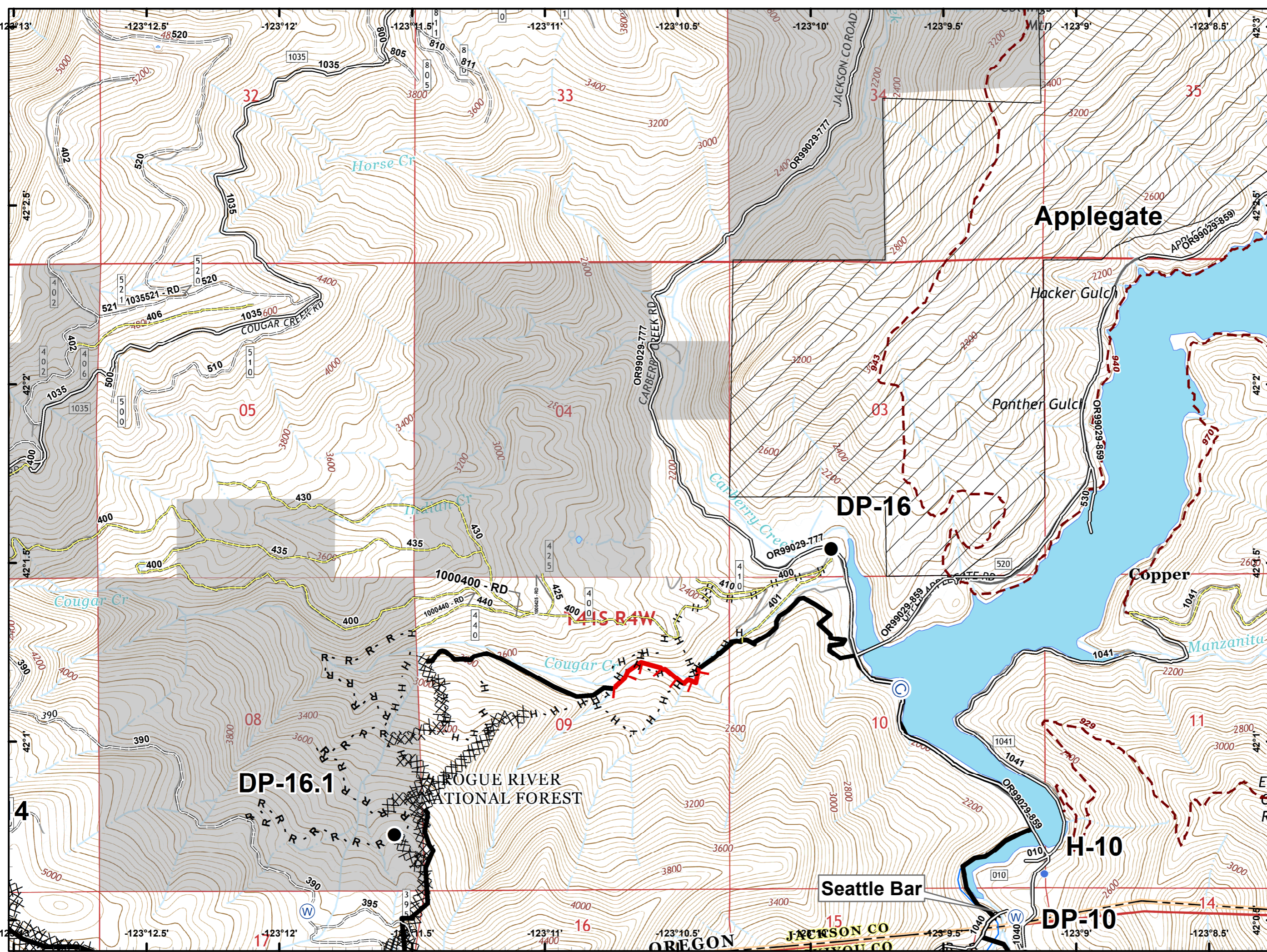
- ★ Towns
- ☐ Map Index Pages
- Fire Area



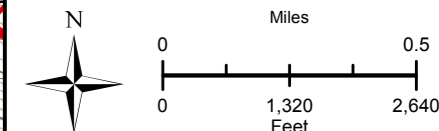
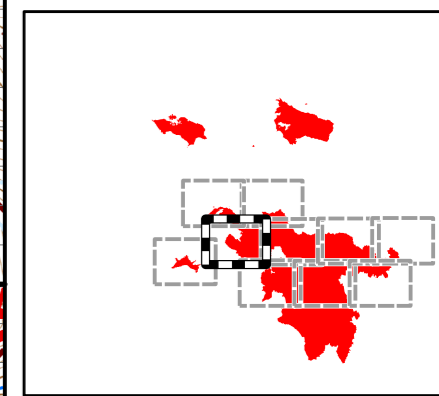
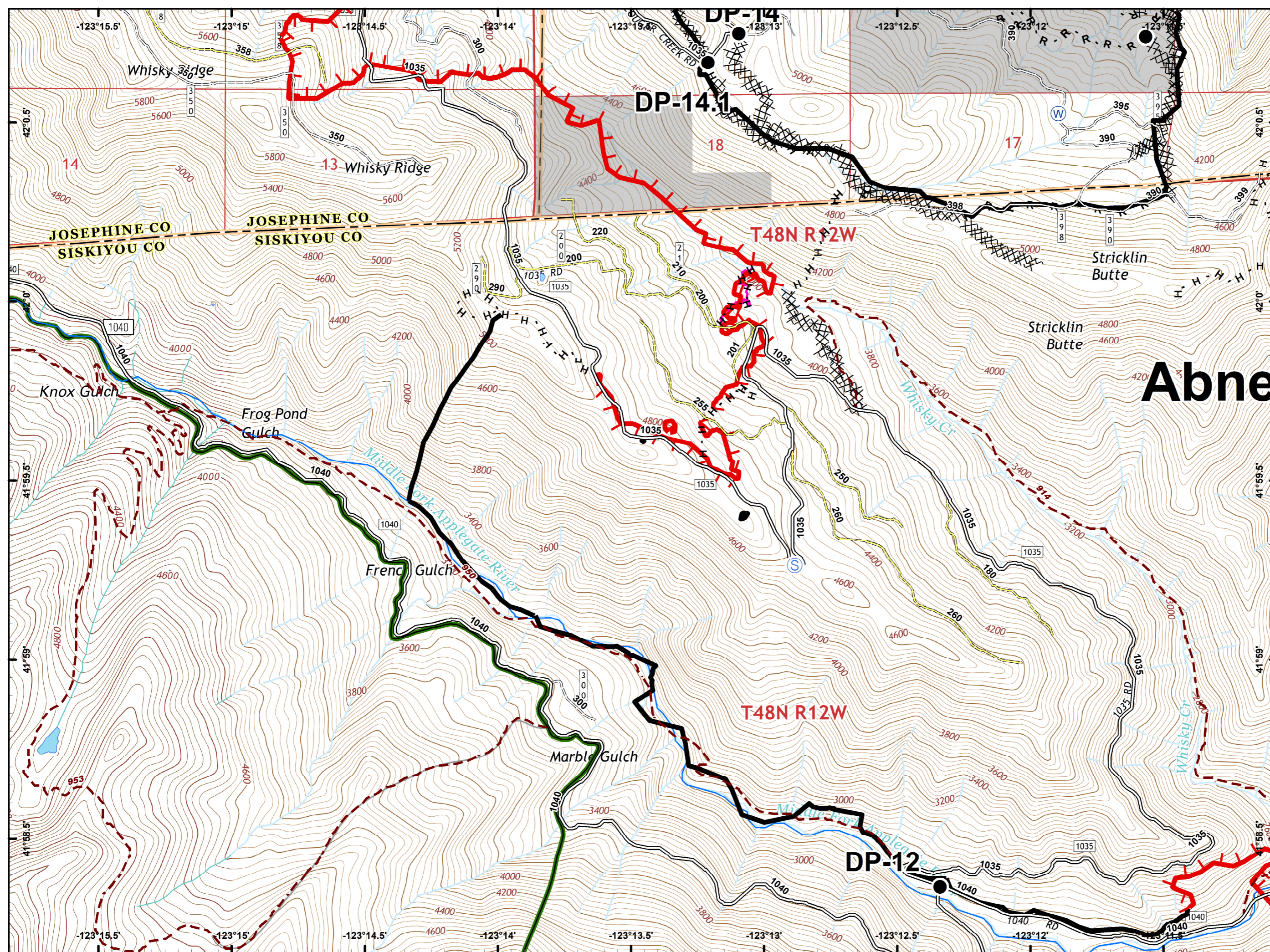
- Drop Point
- Helispot
- Ⓡ Repeater
- 🔴 Uncontrolled Fire Edge
- ⚫ Completed Line
- ⚫ Completed Dozer Line
- H-H-H Completed Hand Line
- 🌿 Botanical Areas
- Private and State
- IRA



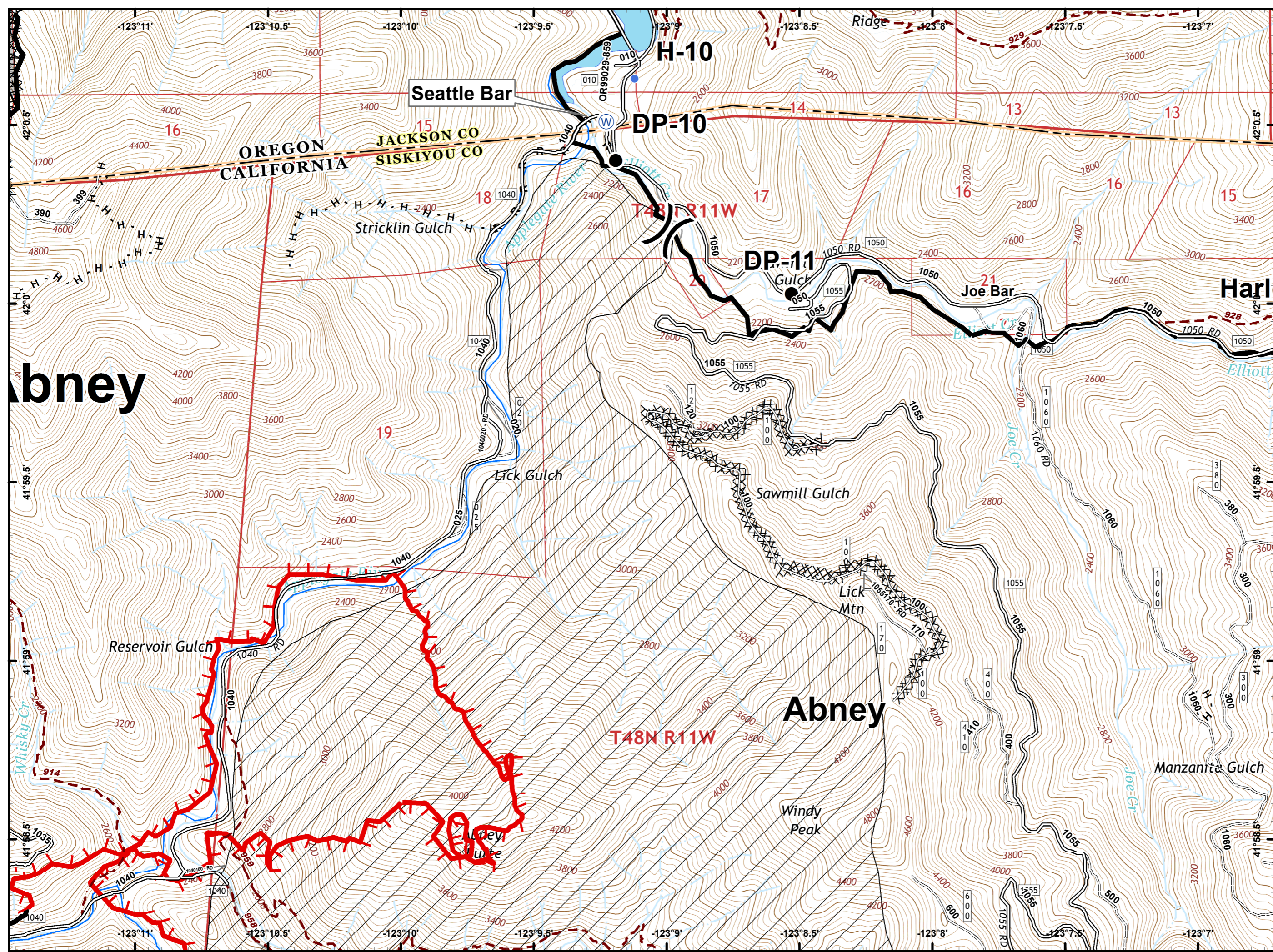
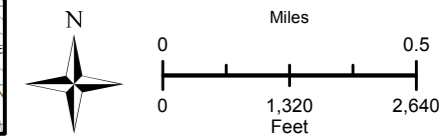
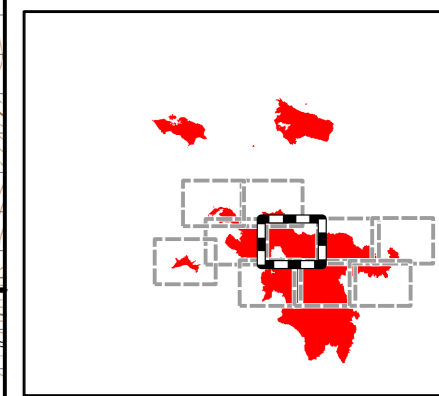
-  Camp
-  Drop Point
-  Helispot
-  Water Source
-  Value at Risk
-  Uncontrolled Fire Edge
-  Completed Line
-  Completed Dozer Line
-  Completed Hand Line
-  Road as Completed Line
-  RIVERS
-  Private and State
-  IRA



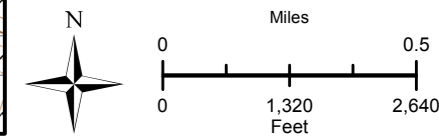
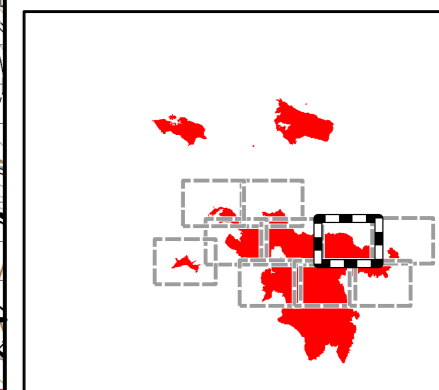
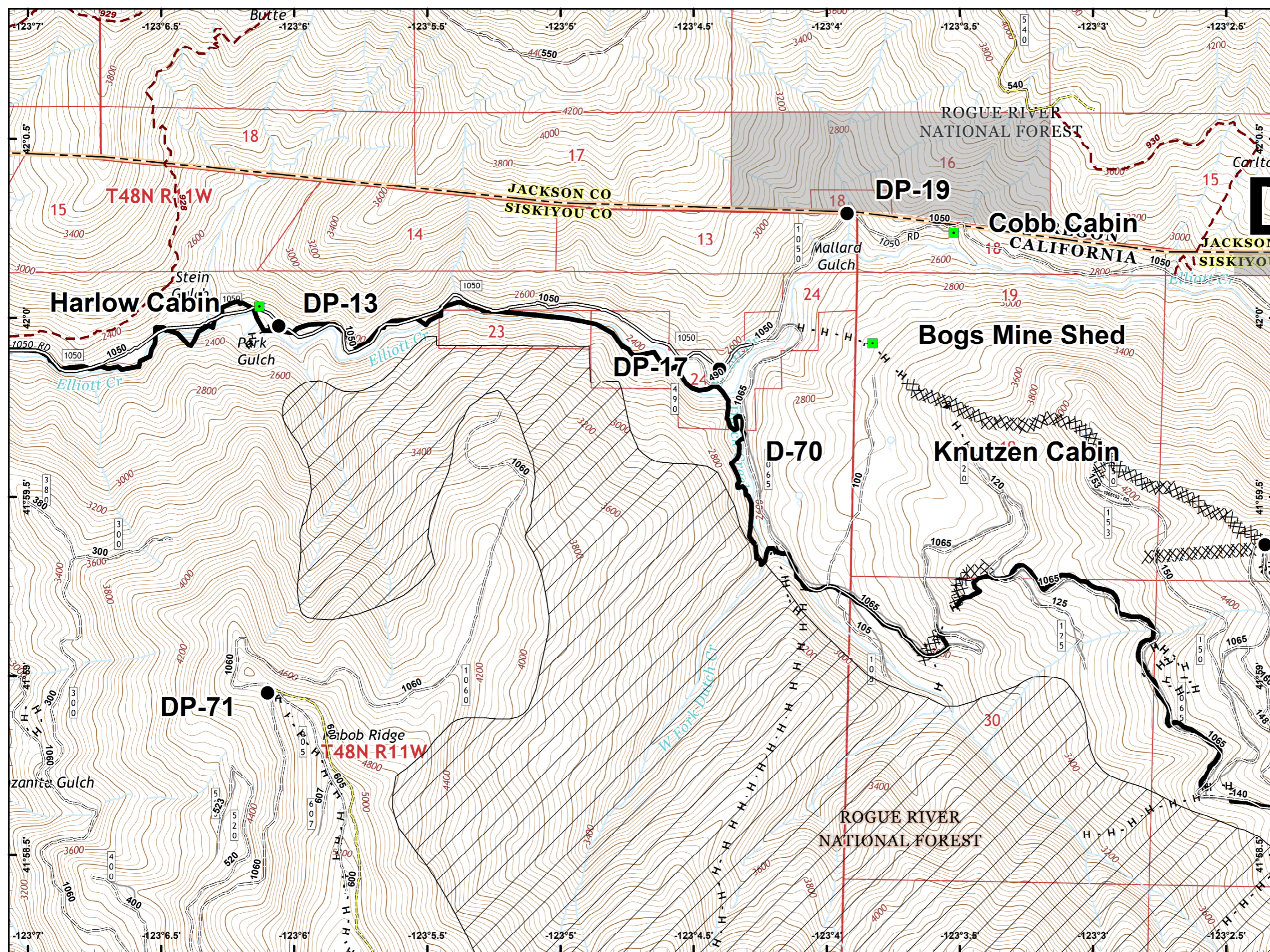
- Drop Point
- Ⓢ Staging Area
- Ⓜ Water Source
- 🔴 Uncontrolled Fire Edge
- ⚫ Completed Line
- ⚫ Completed Dozer Line
- ⚫ Completed Hand Line
- ⚫ Road as Completed Line
- 🟡 Unknown
- 🌊 RIVERS
- 🌿 Wilderness
- ⚫ Private and State











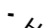



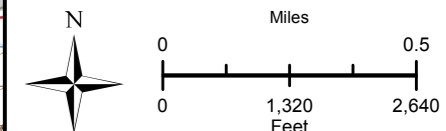
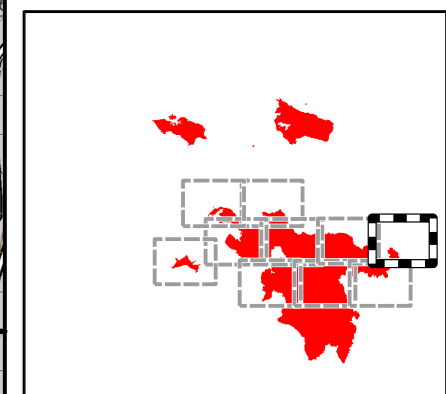
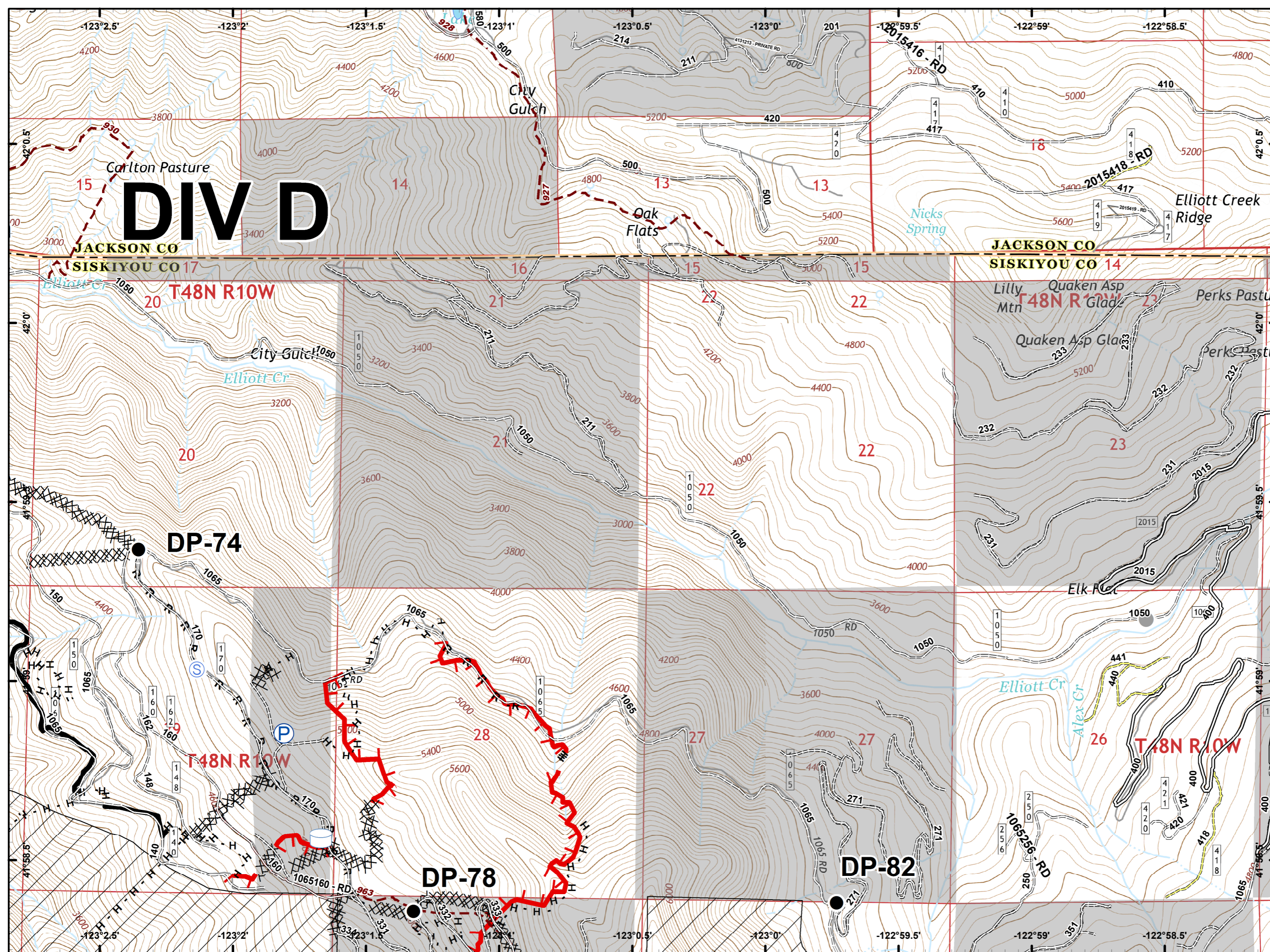
- Drop Point
- Helispot
- Ⓜ Water Source
- ⚠ Value at Risk
-) Division Break
- 🔴 Uncontrolled Fire Edge
- ⚫ Completed Line
- ⚡ Completed Dozer Line
- ⋯ Completed Hand Line
- ⋯ Road as Completed Line
- 🌊 RIVERS
- ▣ Private and State
- ⊕ IRA








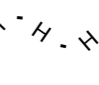






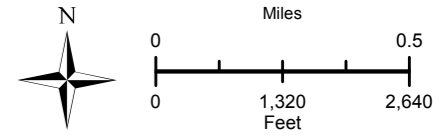
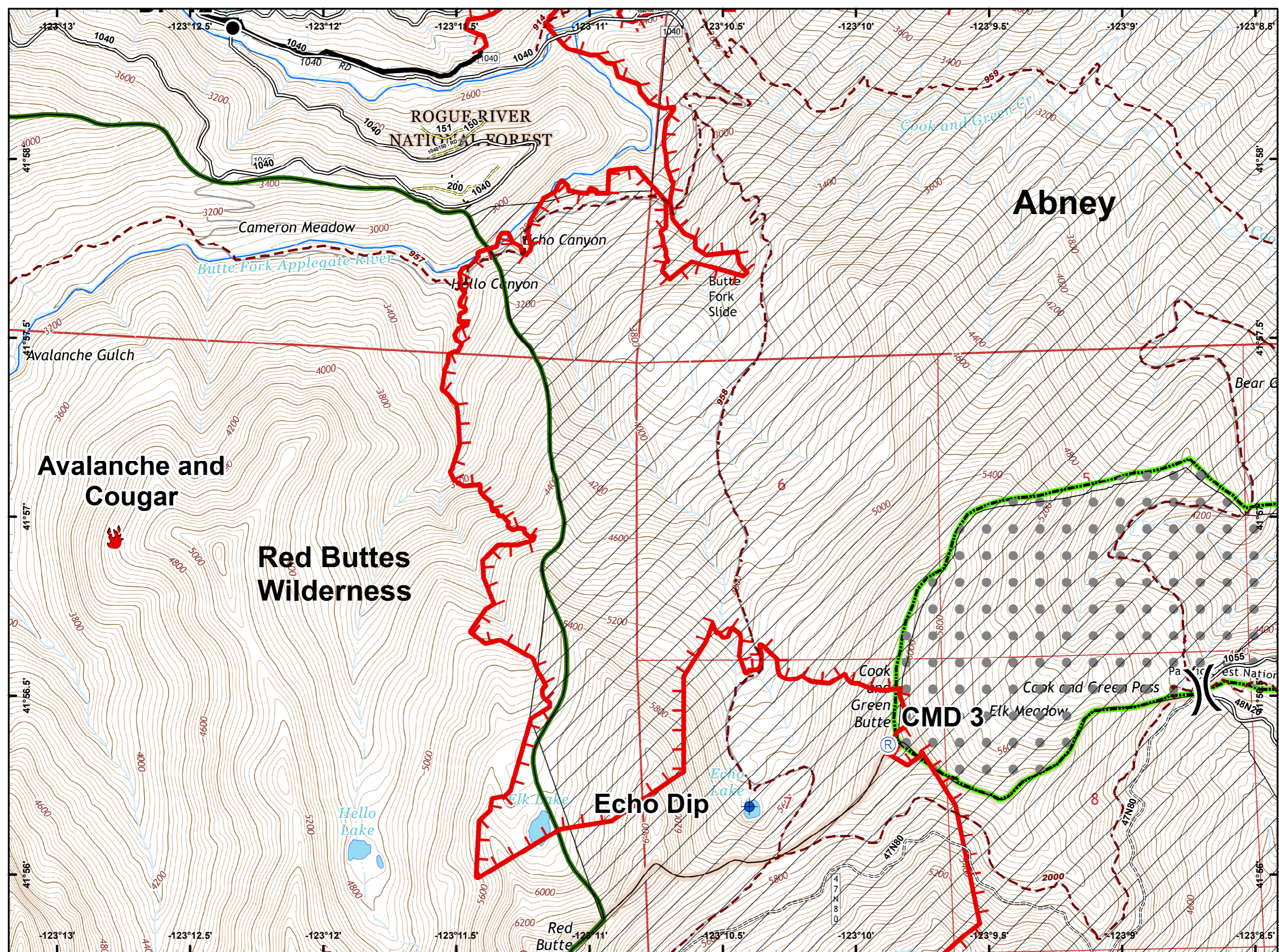
- Drop Point
- Landmark
- ~ Completed Line
- ⊗ Completed Dozer Line
- · - · - Hand Line
- R · R · R Road as Completed Line
- Private and State
- IRA



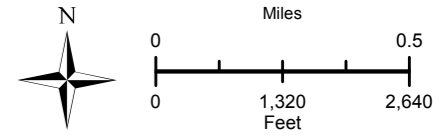
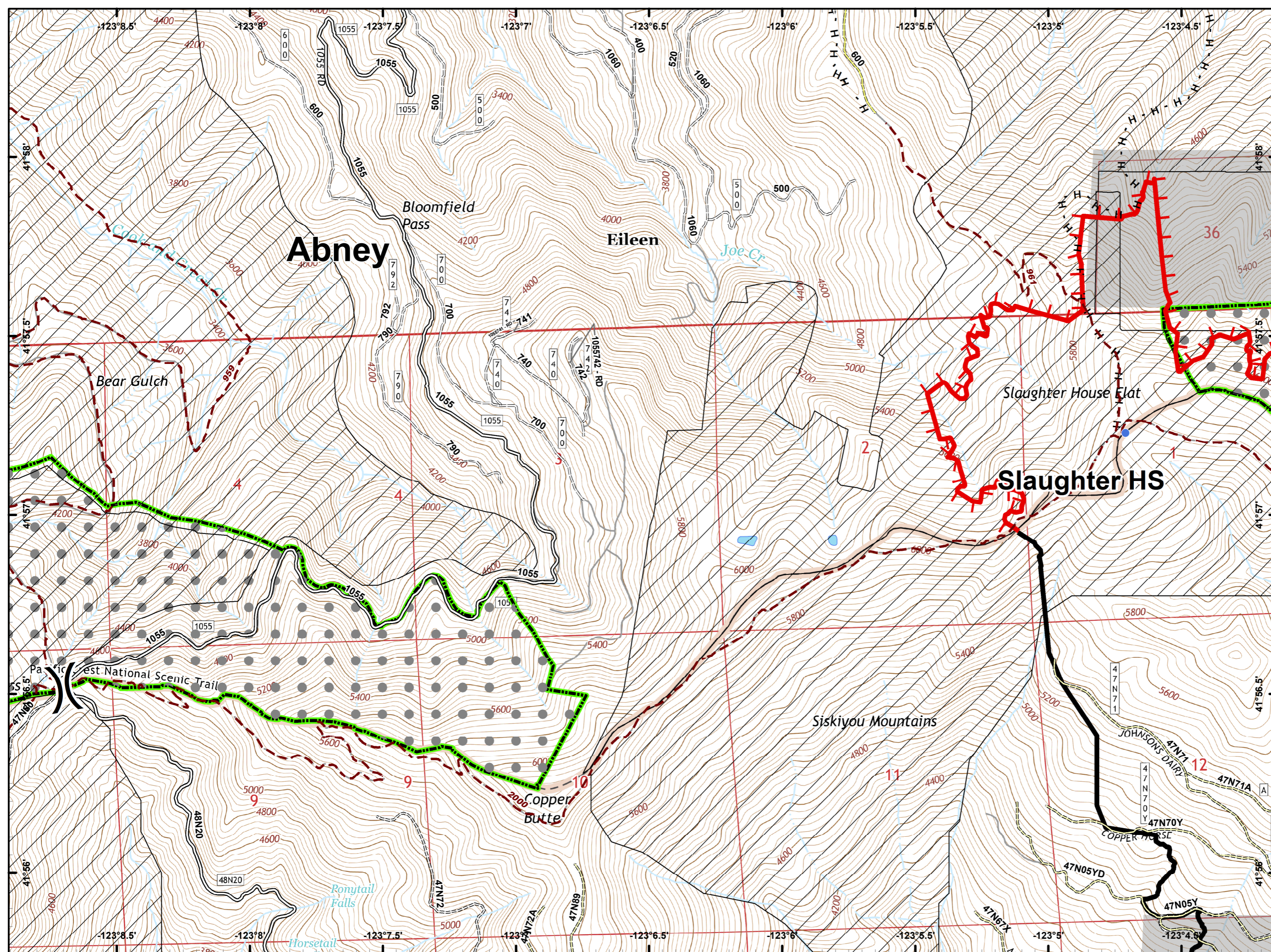
-  Drop Point
-  Pump
-  Staging Area
-  Water Tank
-  Other
-  Uncontrolled Fire Edge
-  Completed Line
-  Completed Dozer Line
-  Completed Hand Line
-  Road as Completed Line
-  Private and State
-  IRA



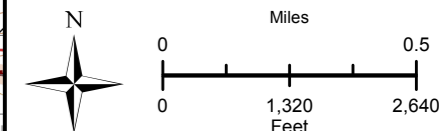
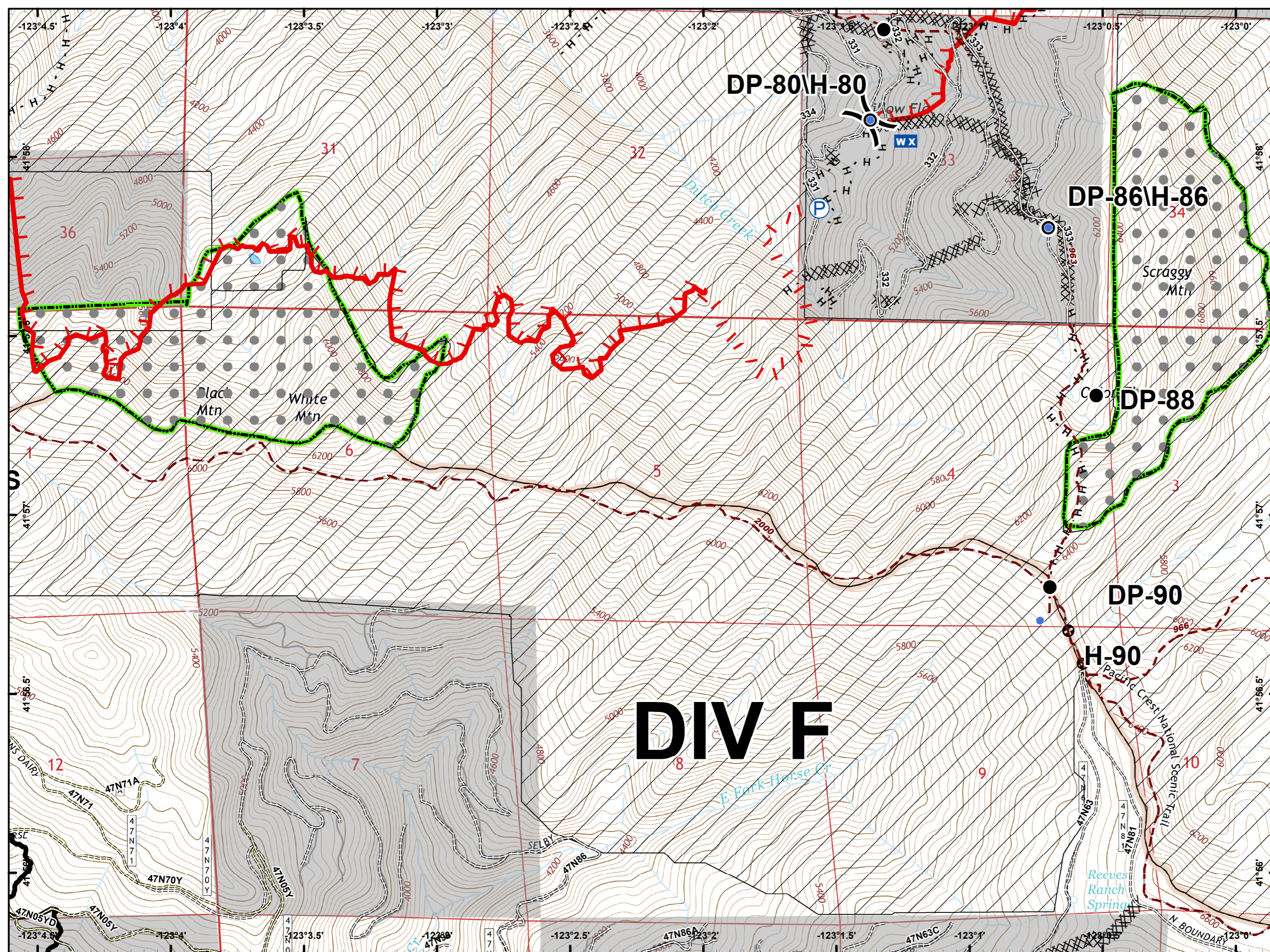
-  Dip Site
-  Drop Point
-  Fire Location
-  Repeater
-  Division Break
-  Uncontrolled Fire Edge
-  Completed Line
-  Completed Hand Line
-  RIVERS
-  Wilderness
-  Botanical Areas
-  IRA







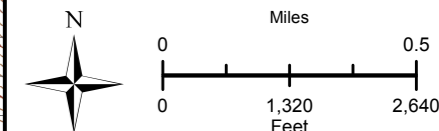
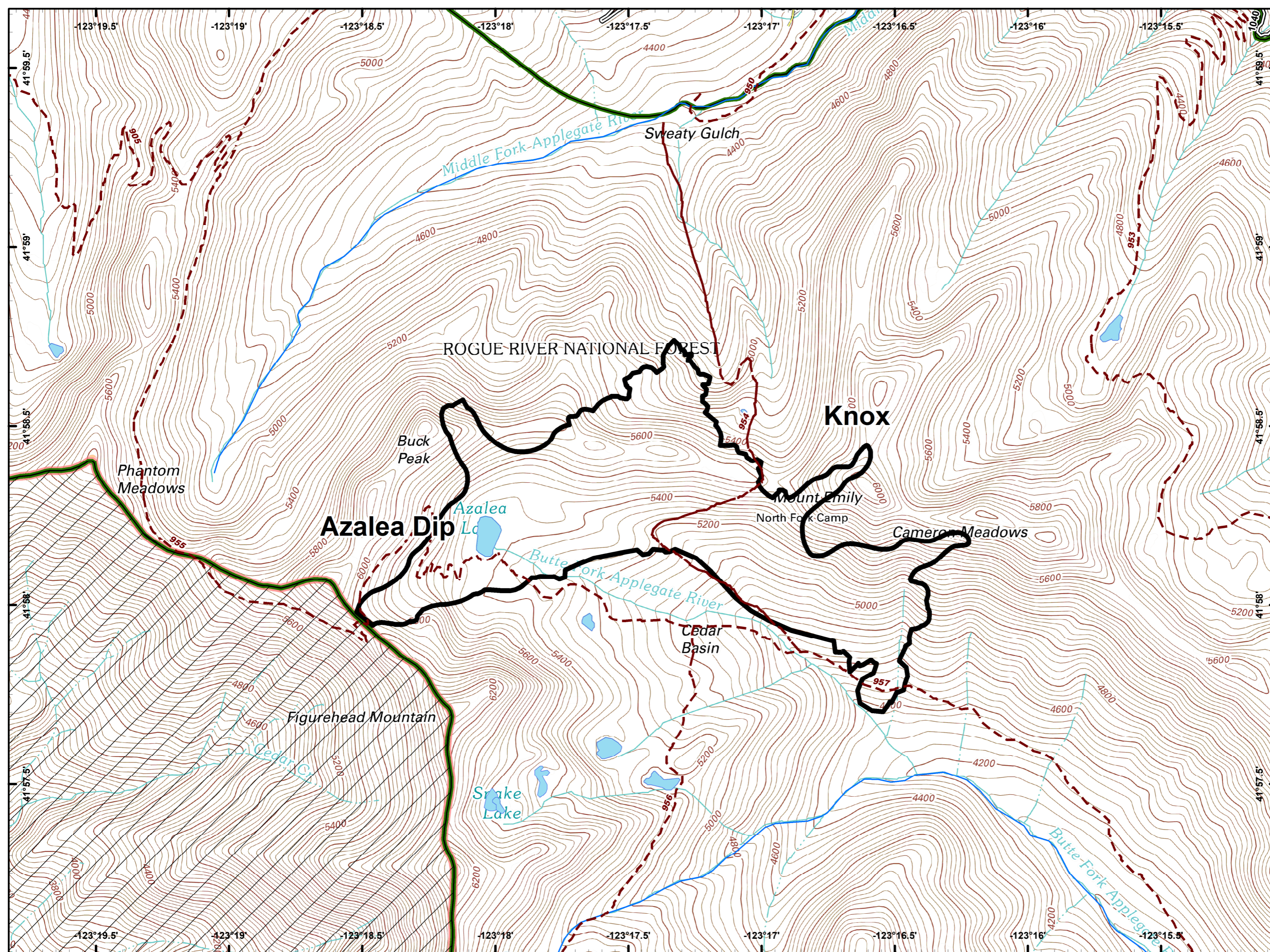
- Helispot
- ⎸ Division Break
- 🔴 Uncontrolled Fire Edge
- ⚫ Completed Line
- ⋯ Completed Hand Line
- 🟢 Botanical Areas
- ⊕ IRA



- Drop Point
- Helispot
- WX Mobile Weather Unit
- P Pump
-) Division Break
- Uncontrolled Fire Edge
- Completed Line
- Completed Dozer Line
- H · H · H Completed Hand Line
- R · R · R Road as Completed Line
- Other
- Botanical Areas
- IRA

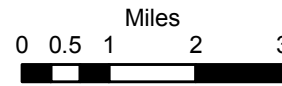


-  Completed Line
-  RIVERS
-  Wilderness
-  IRA

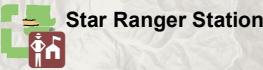


MILLER COMPLEX OR-RSF-000647

TRANSPORTATION MAP



UTM Zone 10 NAD83



Star Ranger Station

- Siskiyou Mountains Ranger District
- Fire Areas
- Administrative Forest Boundary

Grants Pass

Medford

Creedence

Burnt Peak

Steamboat

Applegate Lake

Squaw Lakes

Road 170 deadends at DP-86

Abney

Grants Pass/
Oregon and
California
Coast

