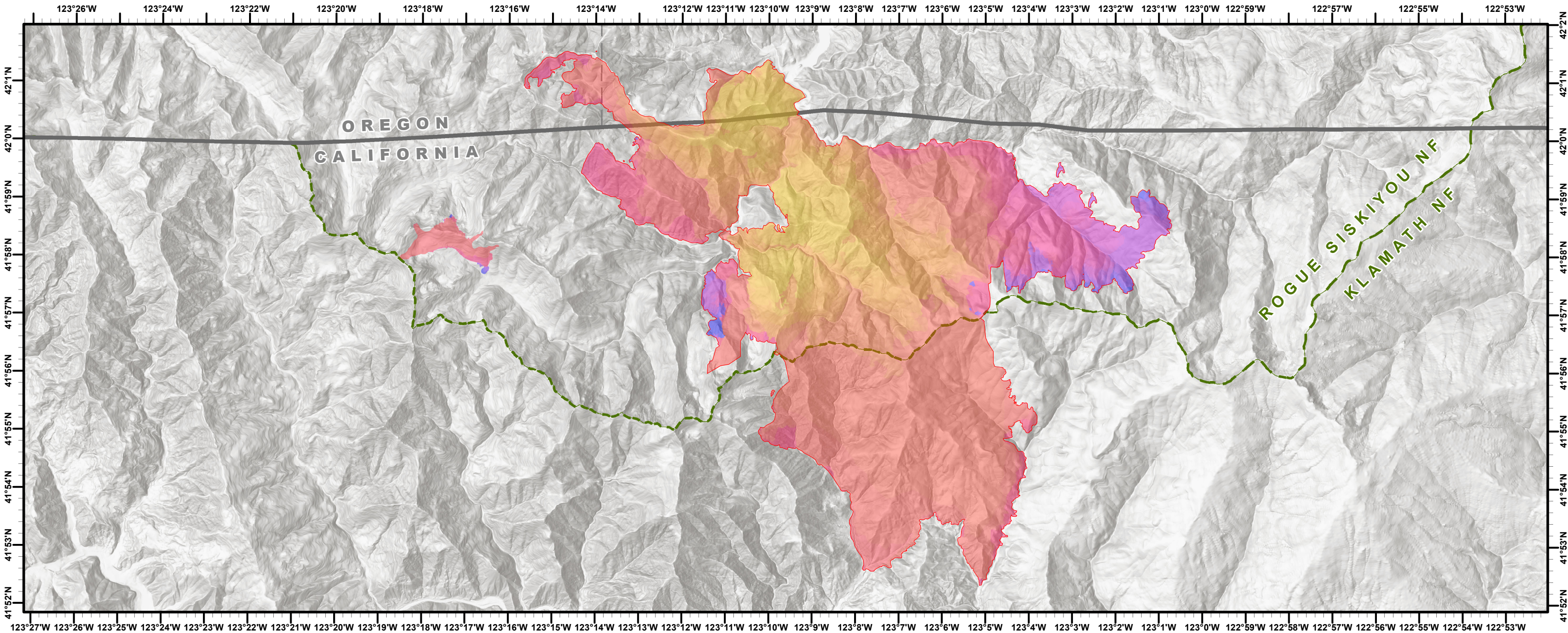


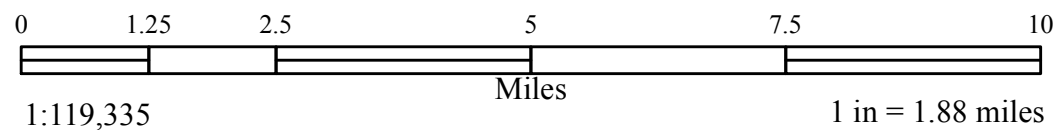
Abney Knox Progression

prog_date, Acres_Round

2017-08-22, 476	2017-08-27, 1246	2017-09-02, 1589	2017-09-09, 211	2017-09-16, 346	2017-09-29, 391	2017-10-06, 115	2017-10-10, 91	2017-10-16, 85
2017-08-23, 921	2017-08-28, 1562	2017-09-03, 5	2017-09-10, 79	2017-09-18, 456	2017-10-01, 248	2017-10-07, 208	2017-10-11, 705	2017-10-17, 55
2017-08-17, 291	2017-08-24, 373	2017-08-29, 1666	2017-09-04, 8968	2017-09-13, 685	2017-09-20, 173	2017-10-03, 127	2017-10-08, 14	2017-10-12, 10
2017-08-19, 1037	2017-08-25, 243	2017-08-30, 553	2017-09-06, 4573	2017-09-14, 274	2017-09-25, 101	2017-10-04, 122	2017-10-09, 446	2017-10-14, 183
2017-08-21, 1077	2017-08-26, 624	2017-08-31, 463	2017-09-07, 1648	2017-09-15, 582	2017-09-27, 234	2017-10-05, 45	2017-10-10, 136	2017-10-15, 60



MILLER COMPLEX OR-RSF-000647
ABNEY PROGRESSION MAP 10/23/2017
Rogue-Siskiyou and Klamath National Forests
 Abney Fire Approx. 32,873 acres; Knox Fire Approx. 509 acres



Northwest IMT 6 GIS Unit
 October 22, 2017, 1342 hrs

For a digital copy of this map go to:
http://ftp.nifc.gov/incident_specific_data/pacific_nw/2017_Incidents_Oregon/2017_Miller_Complex_OR_RSF_00647/GIS/Products/20171022/