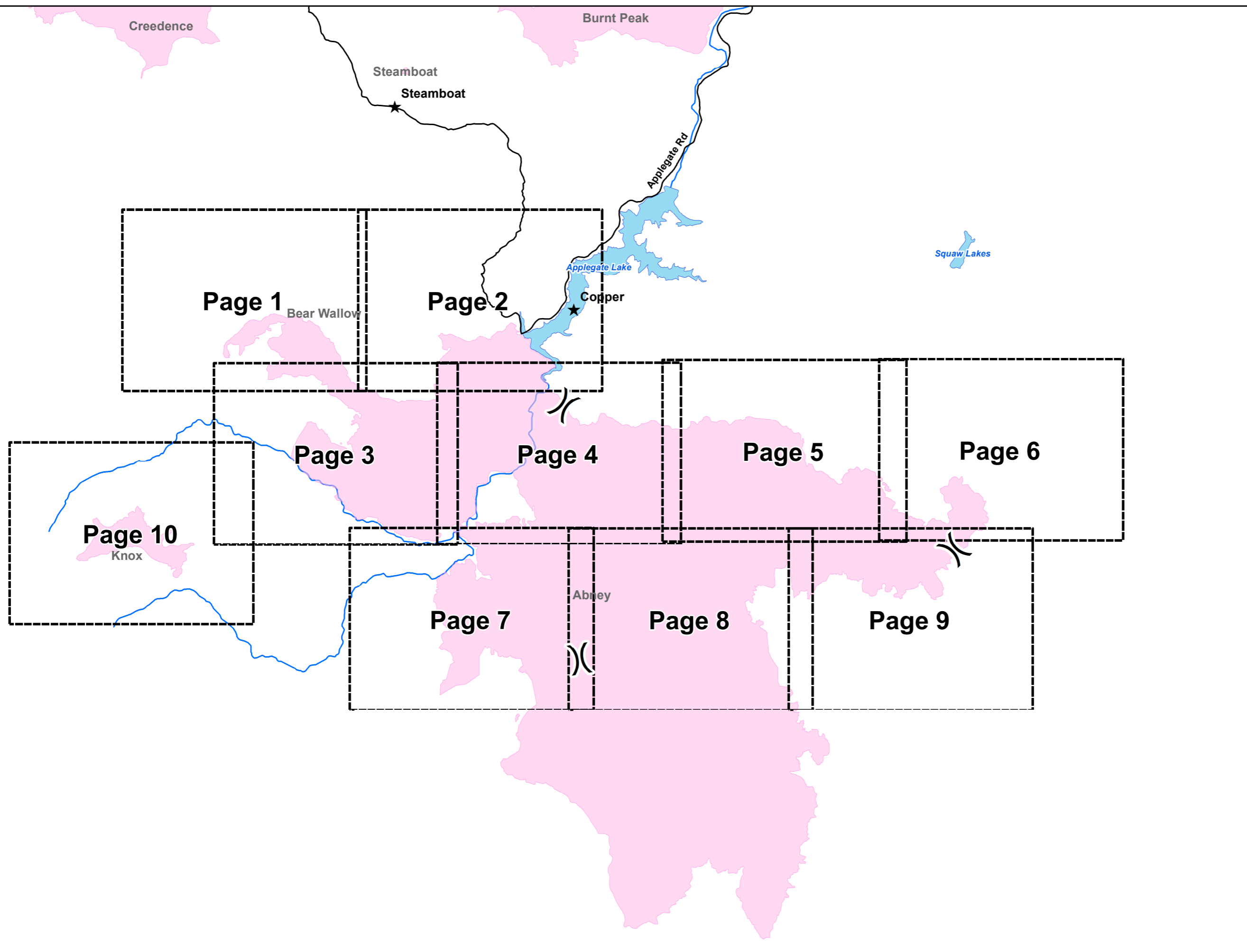
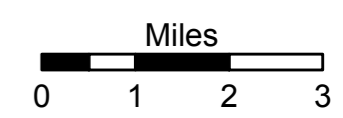


**Miller Complex  
OR-RSF-000647  
Rogue River Siskiyou  
National Forest  
October 26, 2017**

- ★ Towns
- ☐ Map Index Pages
- Fire Area



Creedence

Burnt Peak

Steamboat  
★  
Steamboat

Applegate Rd

Squaw Lakes

Applegate Lake

★  
Copper

**Page 1**

Bear Wallow

**Page 2**

**Page 3**

**Page 4**

**Page 5**

**Page 6**

**Page 10**  
Knox

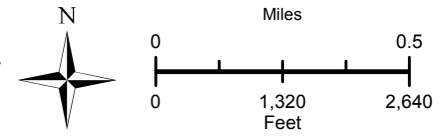
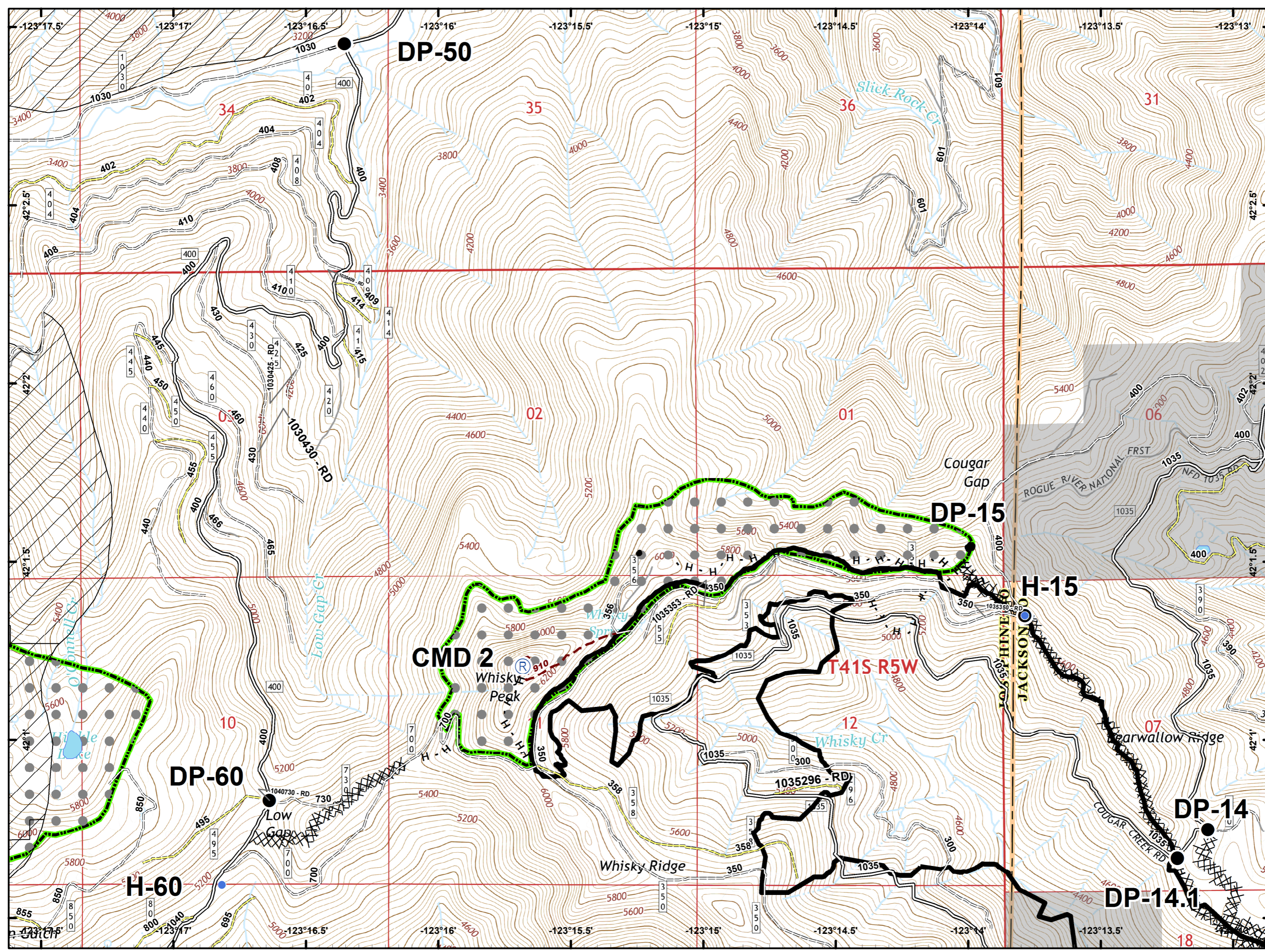
Abney







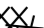

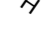



**Page 7**

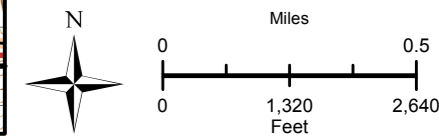
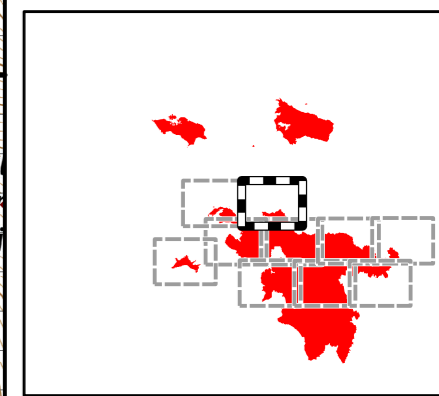
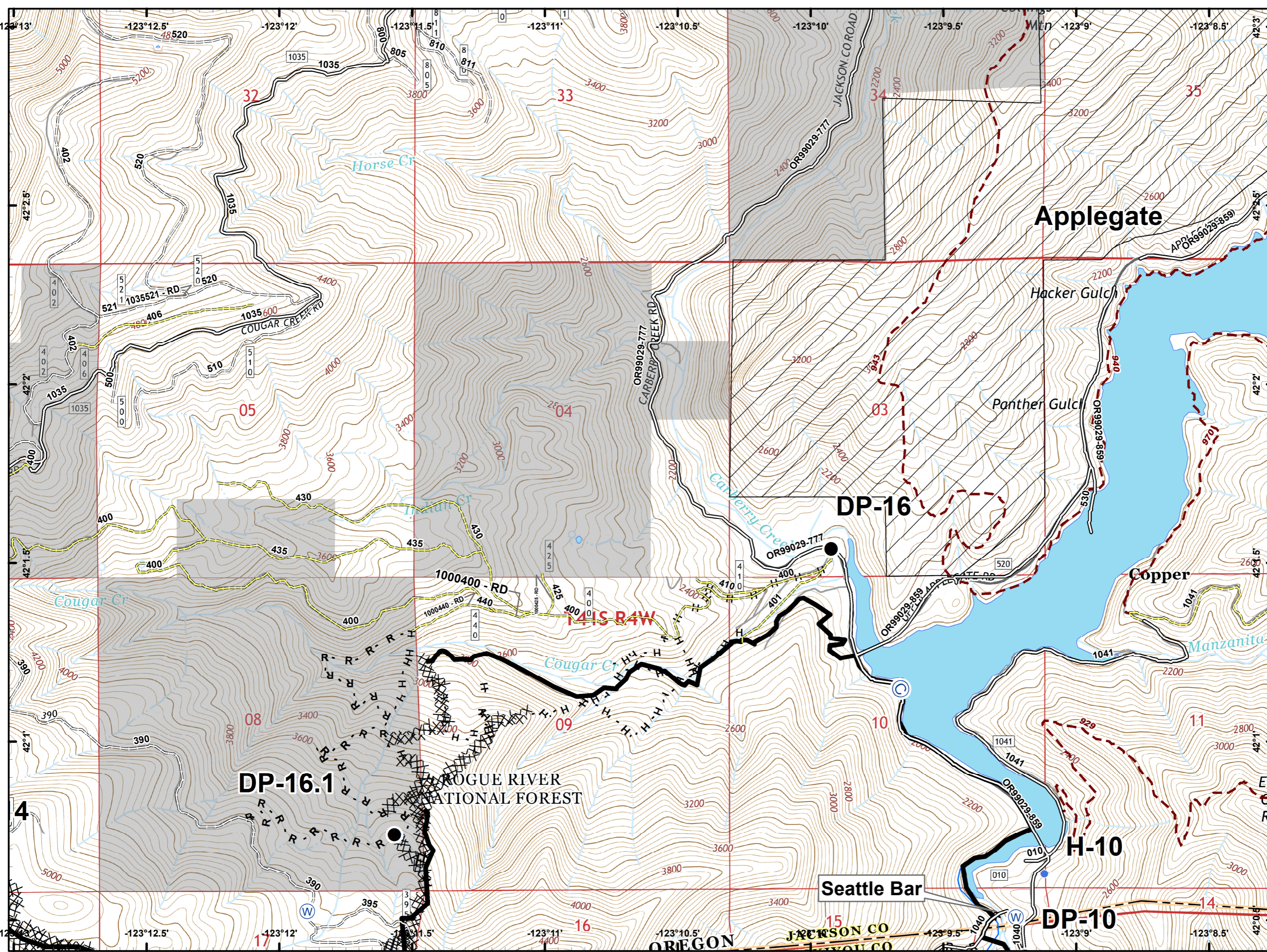
**Page 8**

**Page 9**

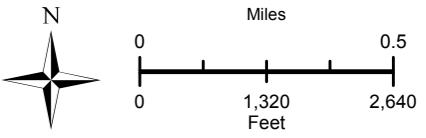
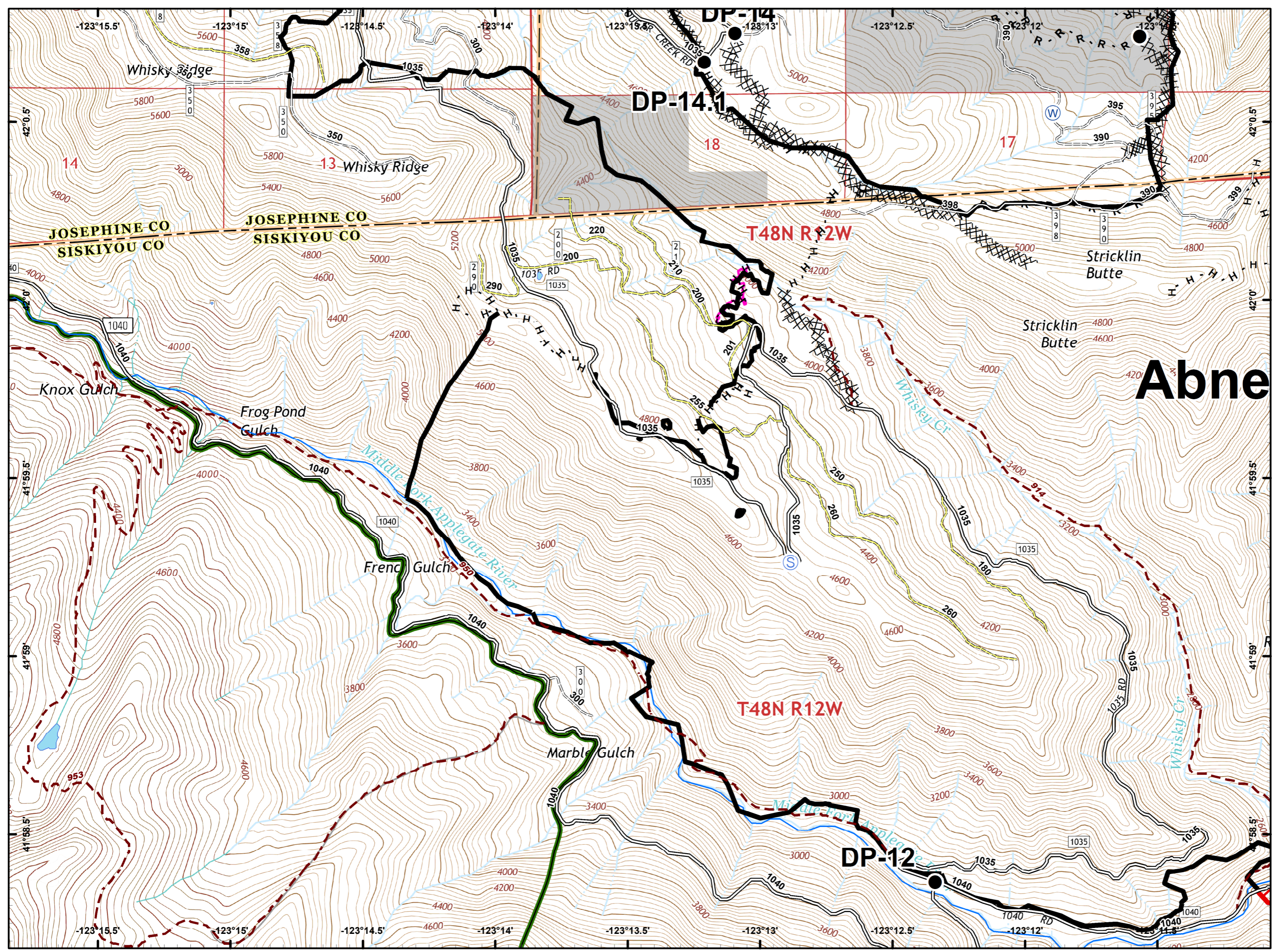
- Drop Point
- Helispot
- Ⓡ Repeater
- ~ Completed Line
- ⊗ Completed Dozer Line
- H-H-H Completed Hand Line
- 🌿 Botanical Areas
- Private and State
- IRA



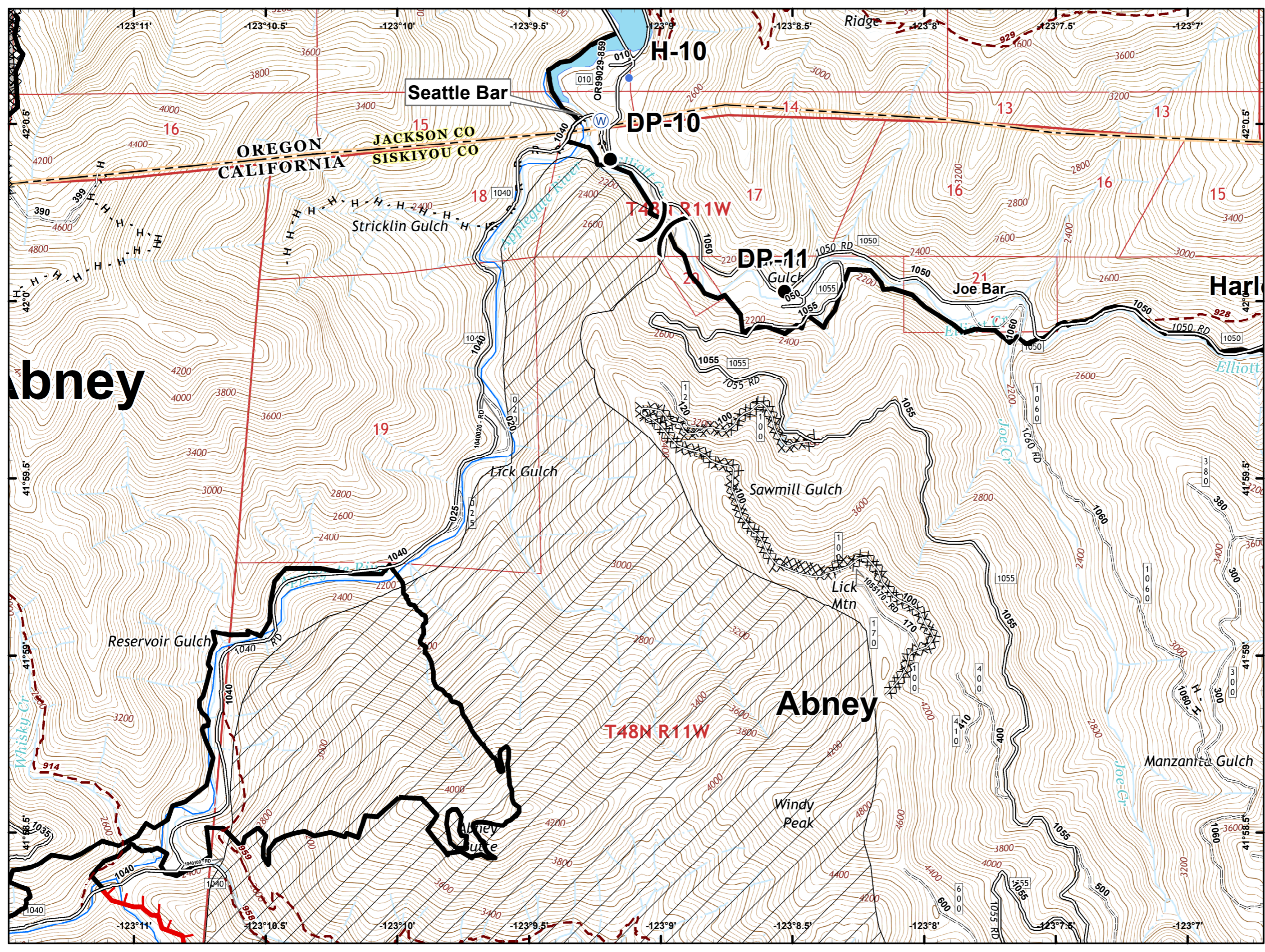
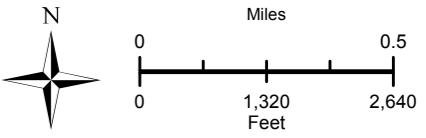
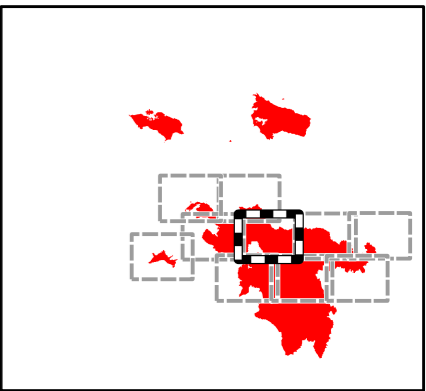
-  Camp
-  Drop Point
-  Helispot
-  Water Source
-  Value at Risk
-  Completed Line
-  Completed Dozer Line
-  Completed Hand Line
-  Road as Completed Line
-  RIVERS
-  Private and State
-  IRA



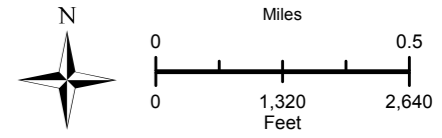
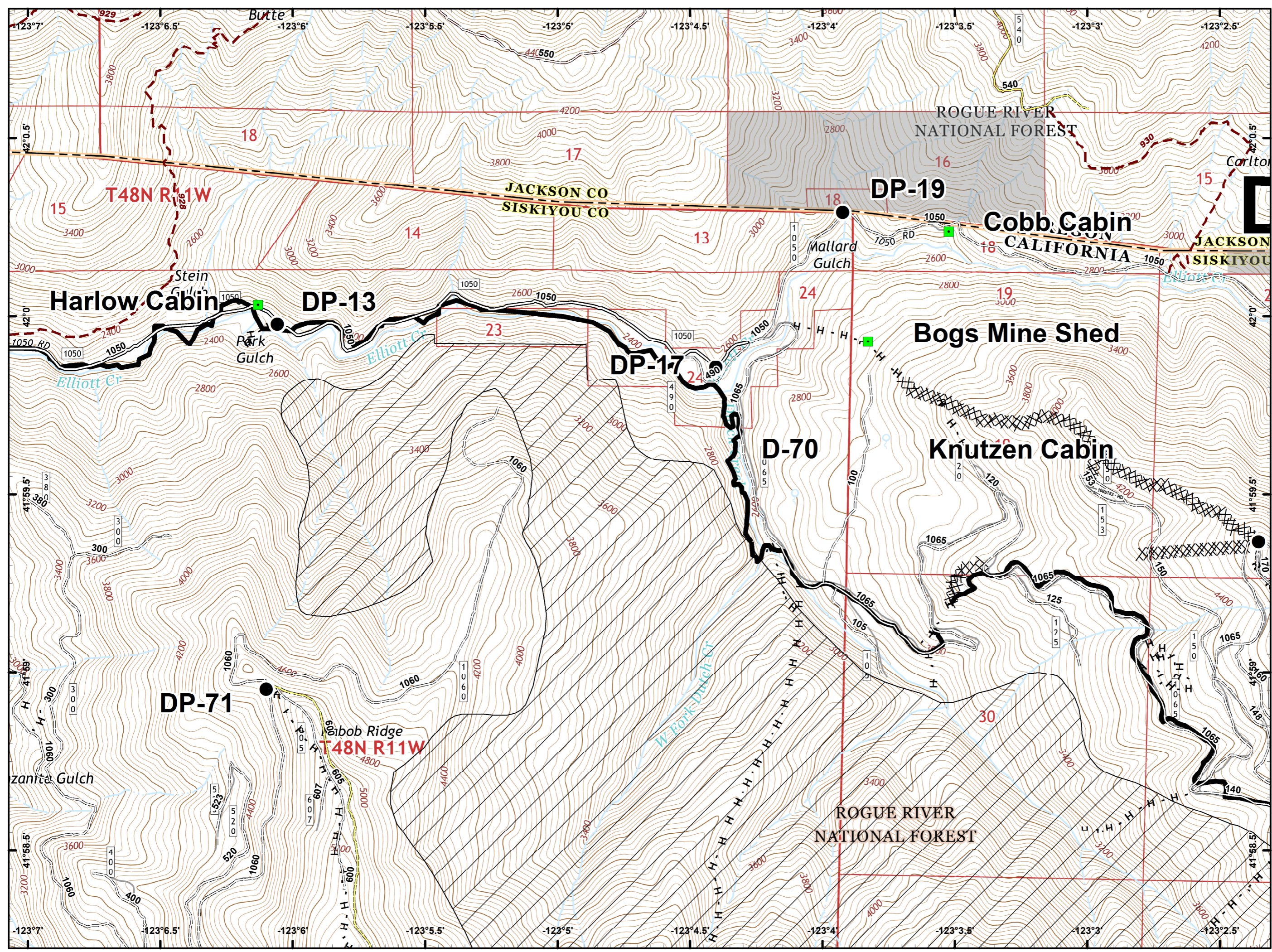
- Drop Point
- Ⓢ Staging Area
- Ⓜ Water Source
- 🔴 Uncontrolled Fire Edge
- ⚫ Completed Line
- ⚫ Completed Dozer Line
- ⚫ Completed Hand Line
- ⚫ Road as Completed Line
- 🟡 Unknown
- 🟦 RIVERS
- 🟩 Wilderness
- ⚫ Private and State



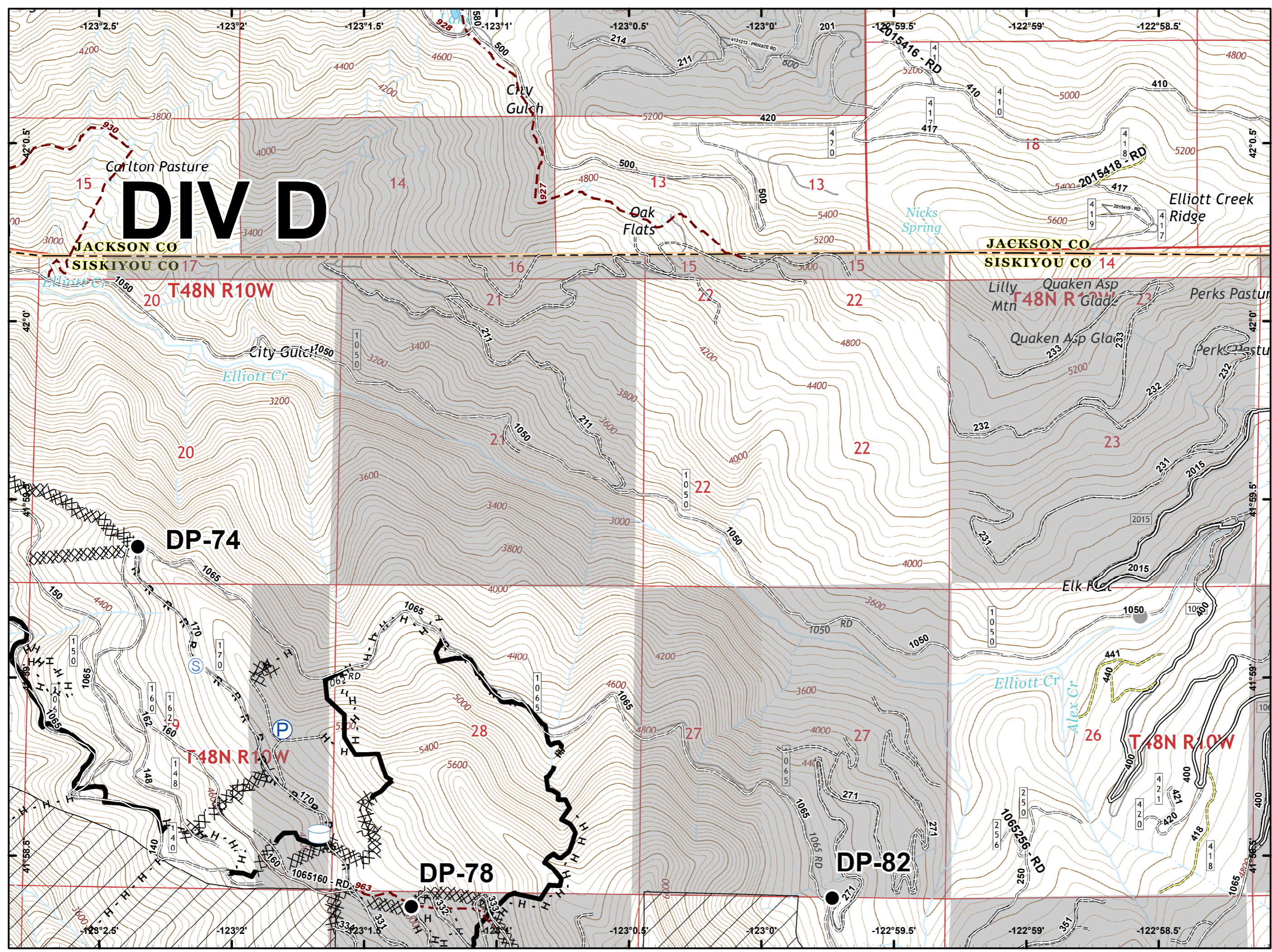
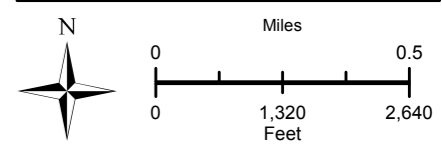
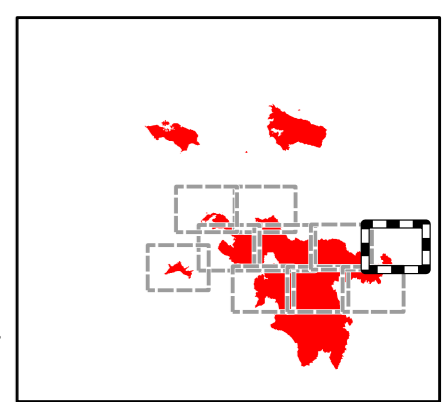
- Drop Point
- Helispot
- Ⓜ Water Source
- ⚠ Value at Risk
- ⎓ Division Break
- 🔴 Uncontrolled Fire Edge
- ⚫ Completed Line
- ⚡ Completed Dozer Line
- ⋯ Completed Hand Line
- ⋯ Road as Completed Line
- 🌊 RIVERS
- ⬜ Private and State
- ⚡ IRA








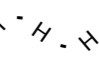






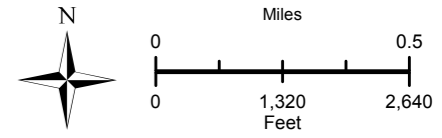
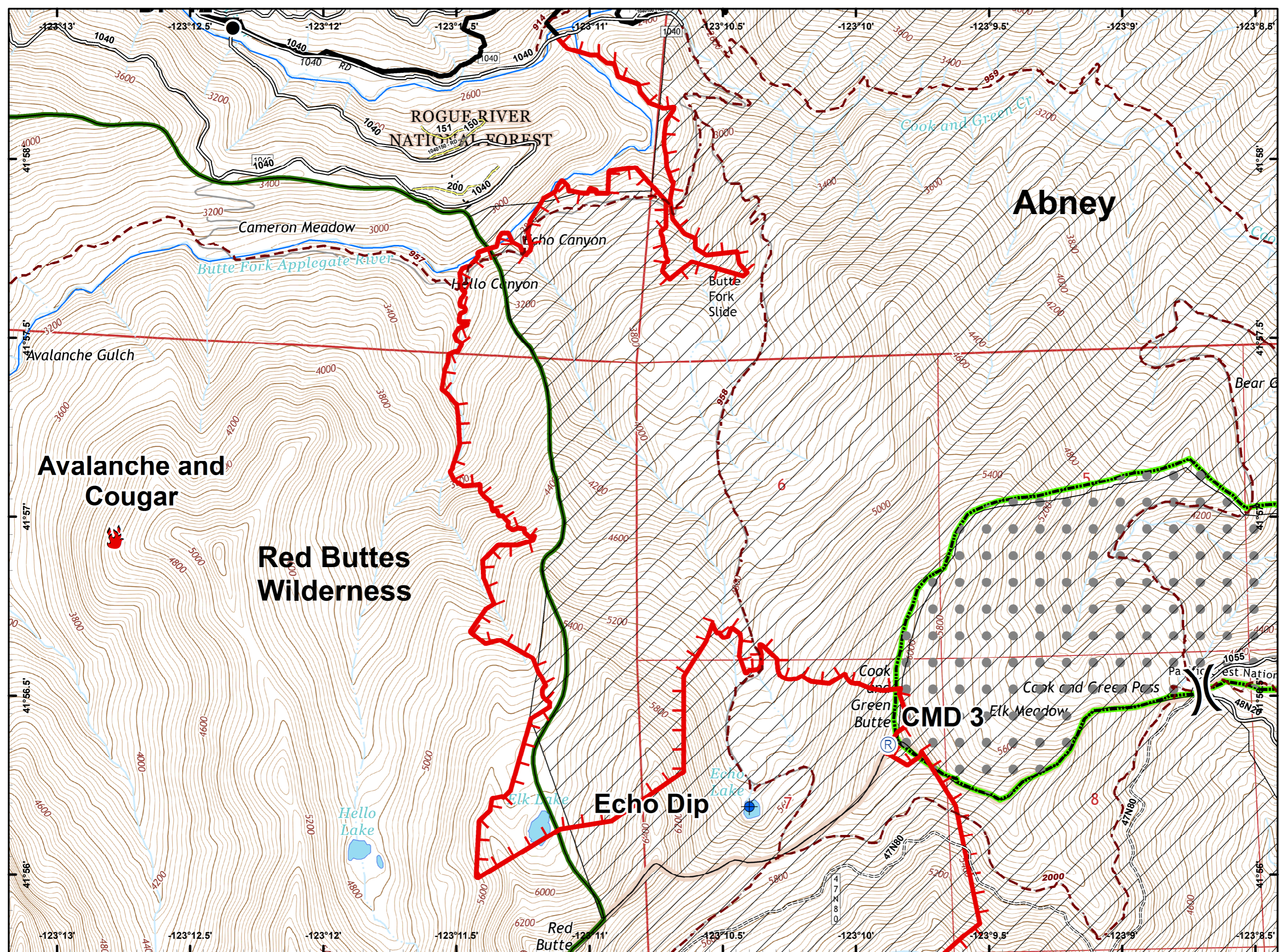
- Drop Point
- Landmark
- ~ Completed Line
- ⊗ Completed Dozer Line
- · - · - Hand Line
- R · R · R Road as Completed Line
- Private and State
- ⊕ IRA



- Drop Point
- P Pump
- S Staging Area
- Water Tank
- Other
- Uncontrolled Fire Edge
- Completed Line
- Completed Dozer Line
- Completed Hand Line
- R-R-R Road as Completed Line
- Private and State
- IRA

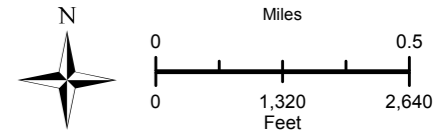
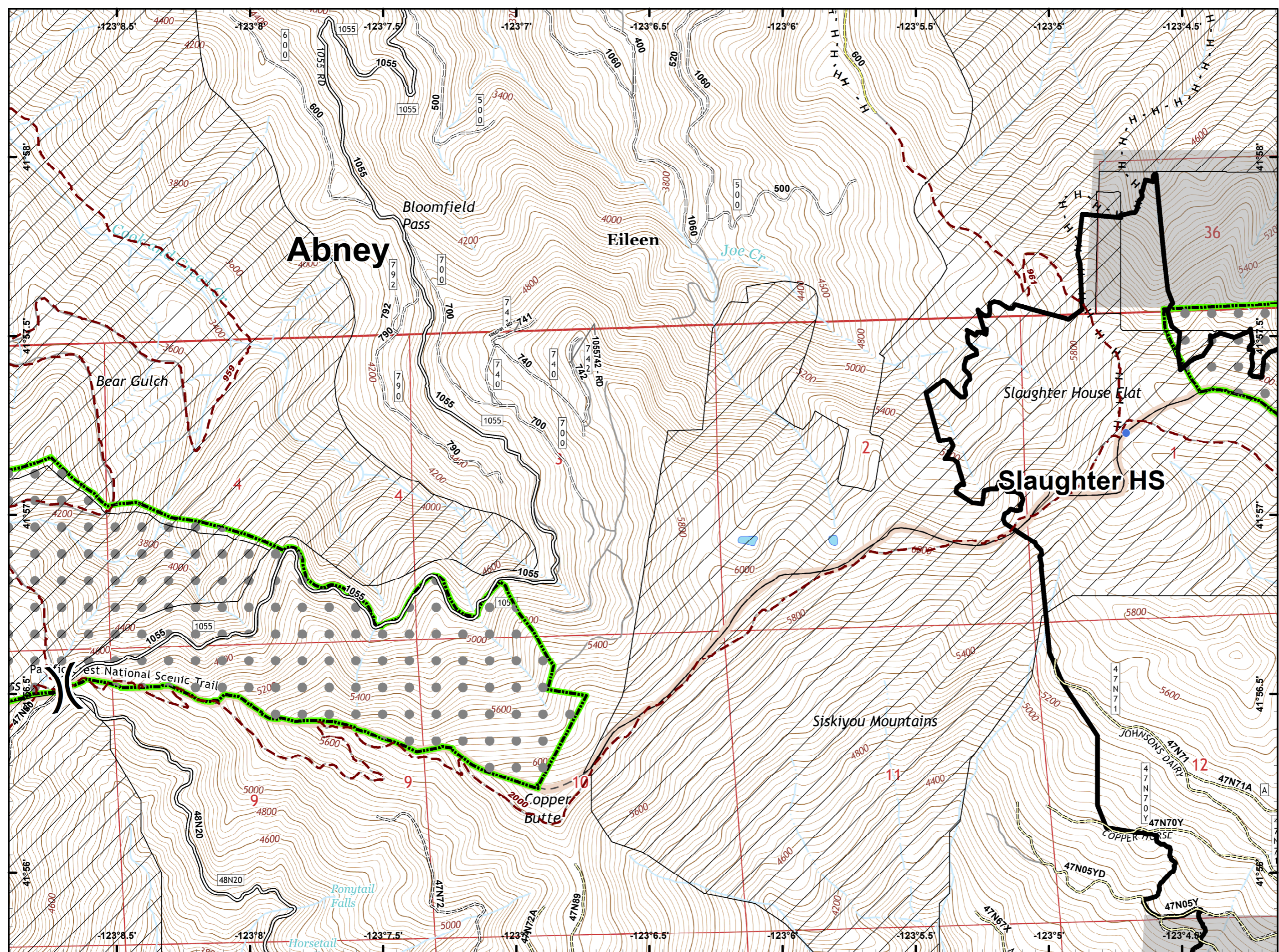


-  Dip Site
-  Drop Point
-  Fire Location
-  Repeater
-  Division Break
-  Uncontrolled Fire Edge
-  Completed Line
-  Completed Hand Line
-  RIVERS
-  Wilderness
-  Botanical Areas
-  IRA

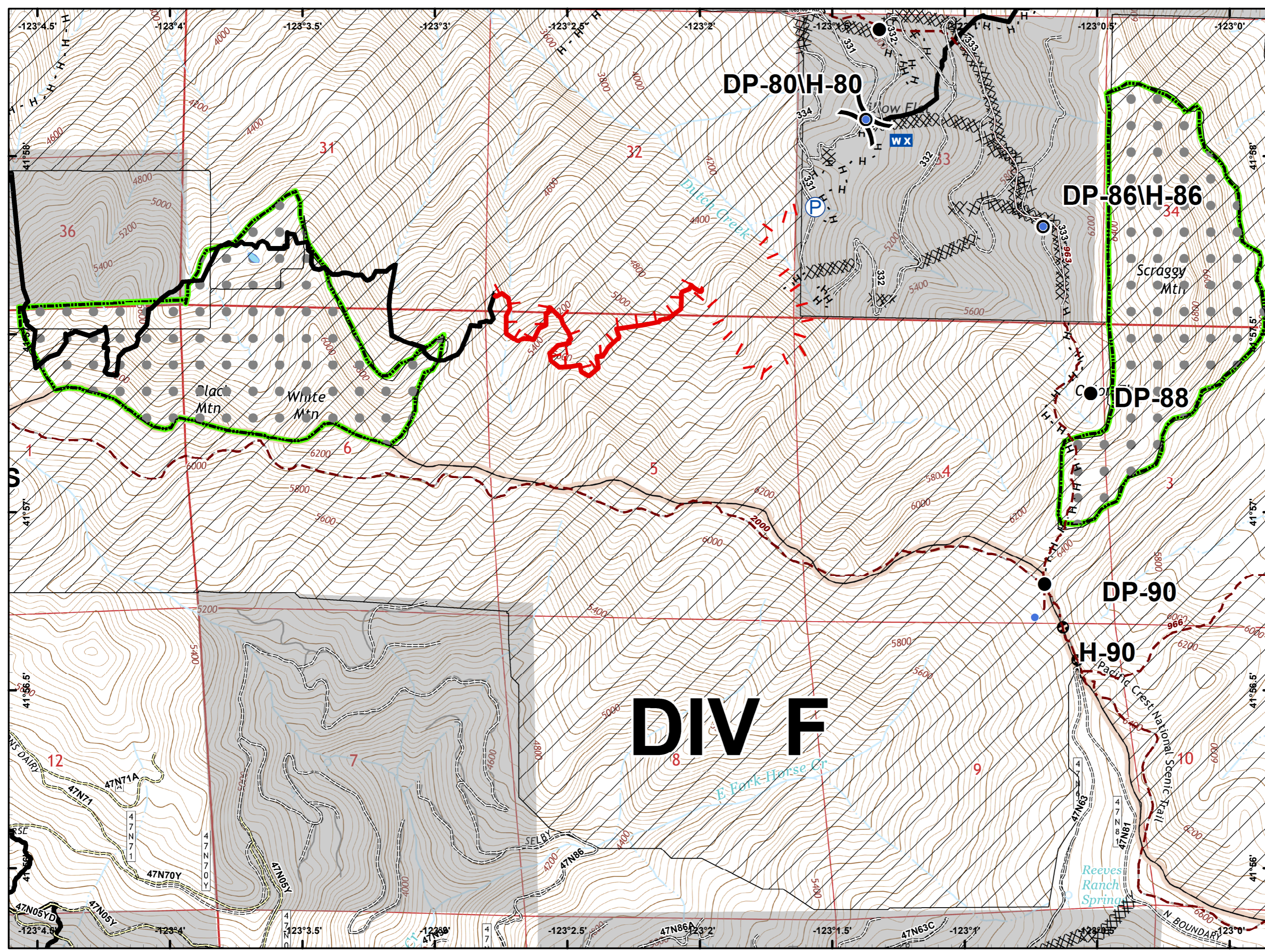




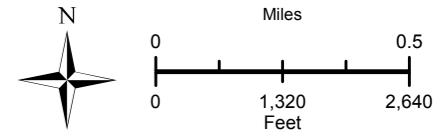
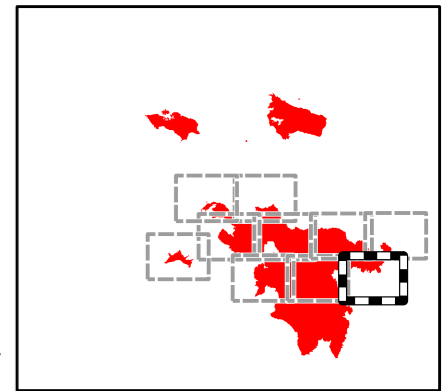
- Helispot
- ⎵ Division Break
- ~ Completed Line
- H-H-H Completed Hand Line
- 🌿 Botanical Areas
- ⊕ IRA







- Drop Point
- Helispot
- WX Mobile Weather Unit
- P Pump
- ) Division Break
- Uncontrolled Fire Edge
- Completed Line
- Completed Dozer Line
- H · H · H Completed Hand Line
- R · R · R Road as Completed Line
- Other
- Botanical Areas
- IRA



**DIV F**



-  Completed Line
-  RIVERS
-  Wilderness
-  IRA

