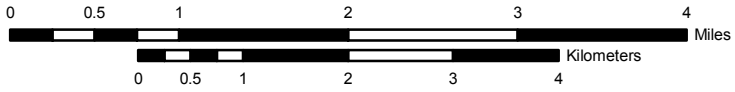
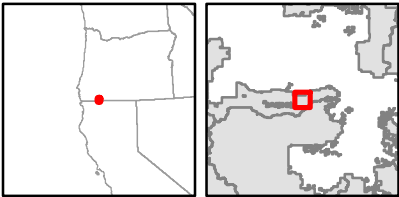
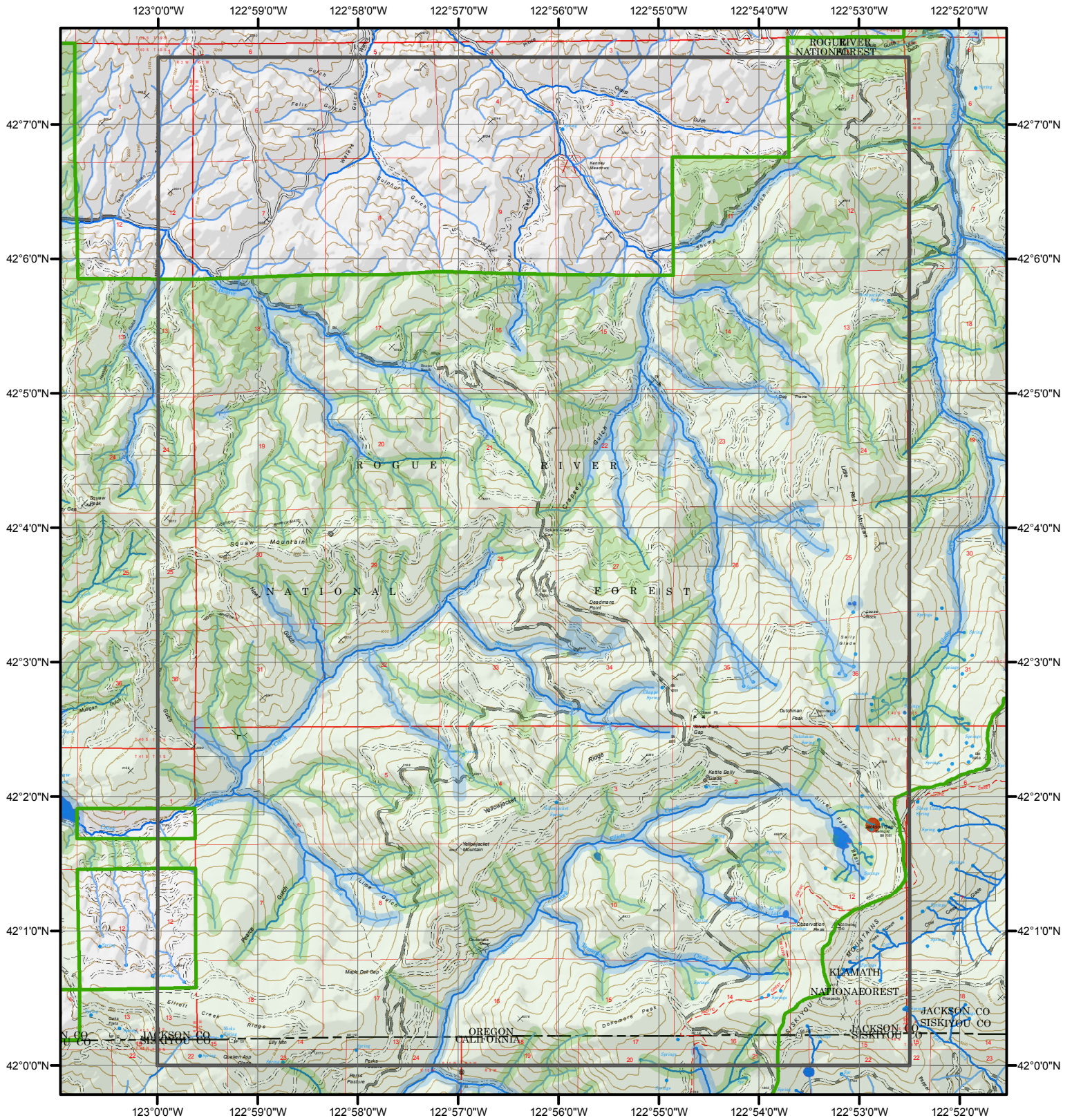


# Decision Support for Aerial Fire Retardant Avoidance

## Rogue River National Forest: Dutchman Peak Quad

### Rogue River-Siskiyou National Forest



Note: This map is solely intended to depict Threatened, Endangered, and certain Sensitive Species, along with streams and water bodies as a planning tool for decisions with regard to aerial fire retardant avoidance.

November 10, 2011