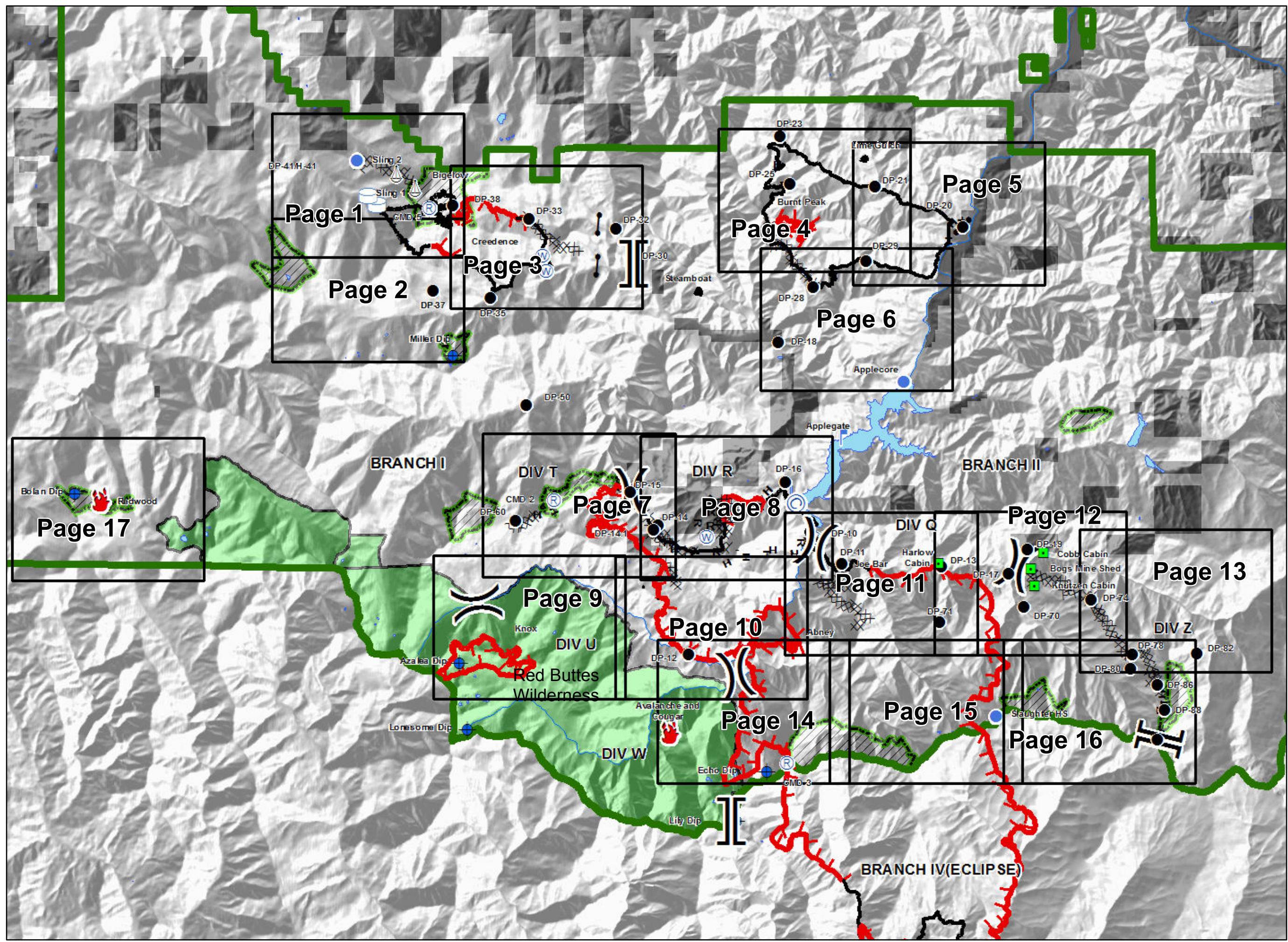
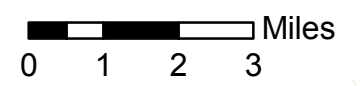


**Miller Complex
OR-RSF-000647
9/11/2017**

- Camp
- Dip Site
- Drop Point
- Fire
- Gate
- Helispot
- Landmark
- Lookout
- Repeater
- Sling Site
- Water
- Water
- Value at
- Division
- Branch
- Uncontrolled Fire Edge
- Completed
- Completed Dozer
- Completed Hand
- Road as Completed Line
- Administrative Forest Boundary
- NHD Water Boundaries
- Rivers
- Wilderness
- Private



Page 1 DP-41H-41 Sling 2 Sling 1 CMD-5 Bigelow Creedence DP-38 DP-33 DP-32 DP-30 DP-37 DP-35 Miller Dip

Page 2

Page 3

Page 4 DP-23 Lime Gulch DP-25 DP-21 DP-20 DP-29 DP-28 DP-18 Applegate Applecore

Page 5

Page 6

Page 7 Bolan Dip Redwood DP-15 DP-14 DP-14.1 CMD 2 DIV T

Page 8 DIV R DP-16

Page 9 BRANCH I DIV U Knox Red Buttes Wilderness Azalea Dip Lonesome Dip DIV W

Page 10 DIV Q Harlow Cabin Joe Bar DP-10 DP-11 DP-13 DP-17 DP-71 Abney

Page 11

Page 12 Cobb Cabin Bogs Mine Shed Knutzen Cabin DP-19 DP-70 DP-74

Page 13 DIV Z DP-78 DP-82 DP-80 DP-86 DP-88

Page 14 Avalanche and Cougar Echo Dip CMD-3

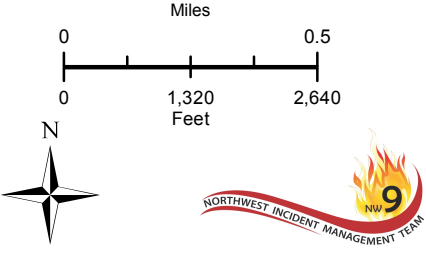
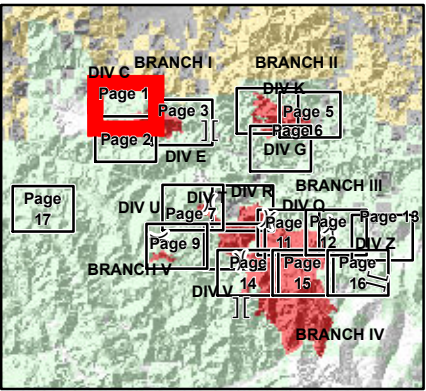
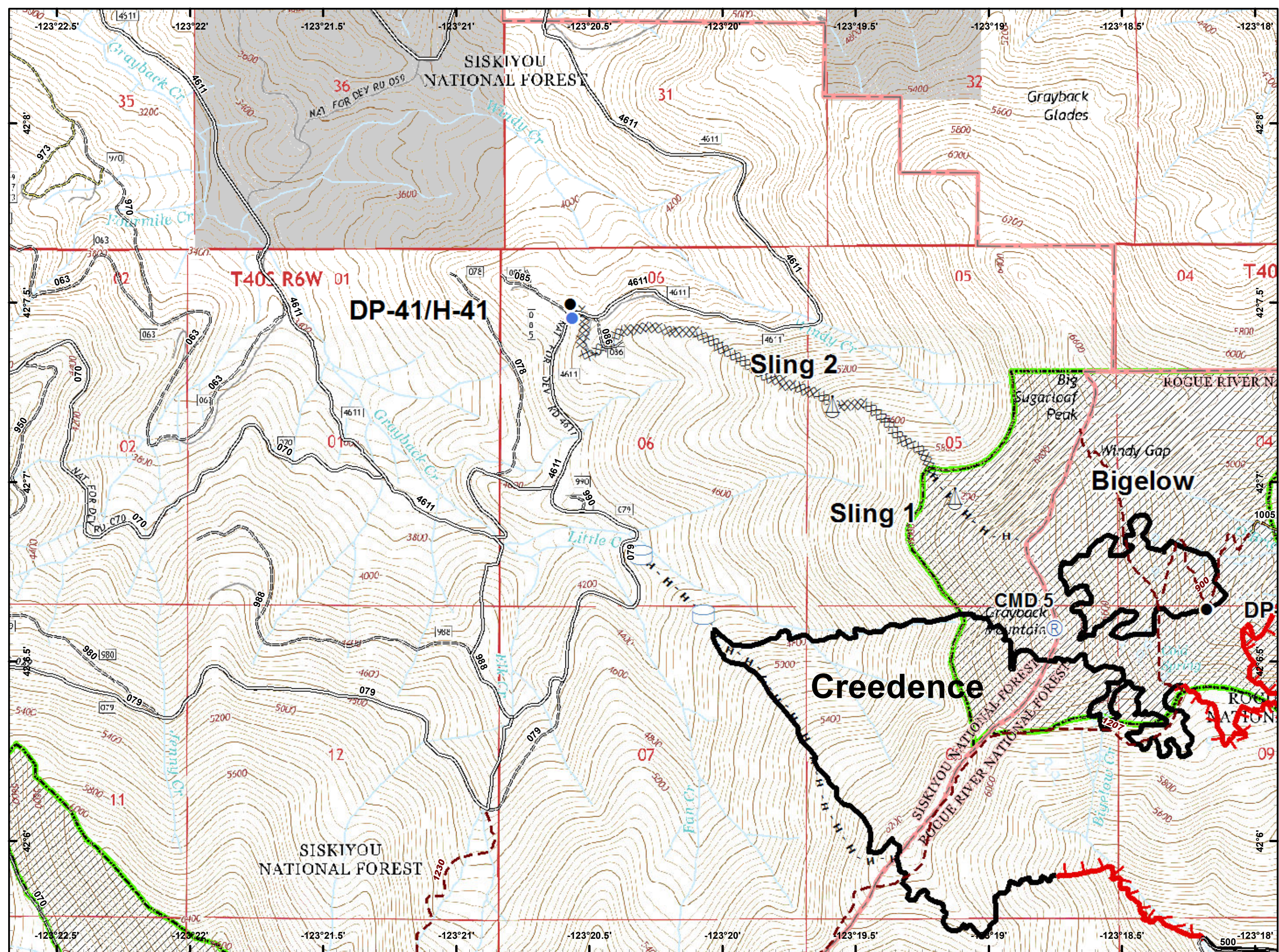
Page 15





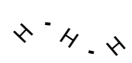
Page 16 Slaughter HS

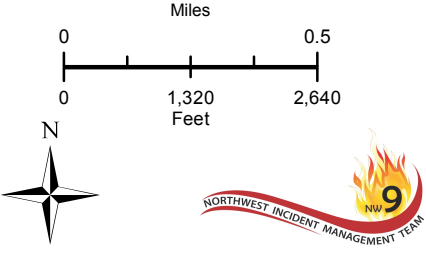
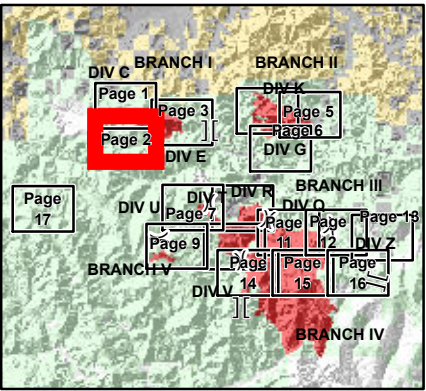
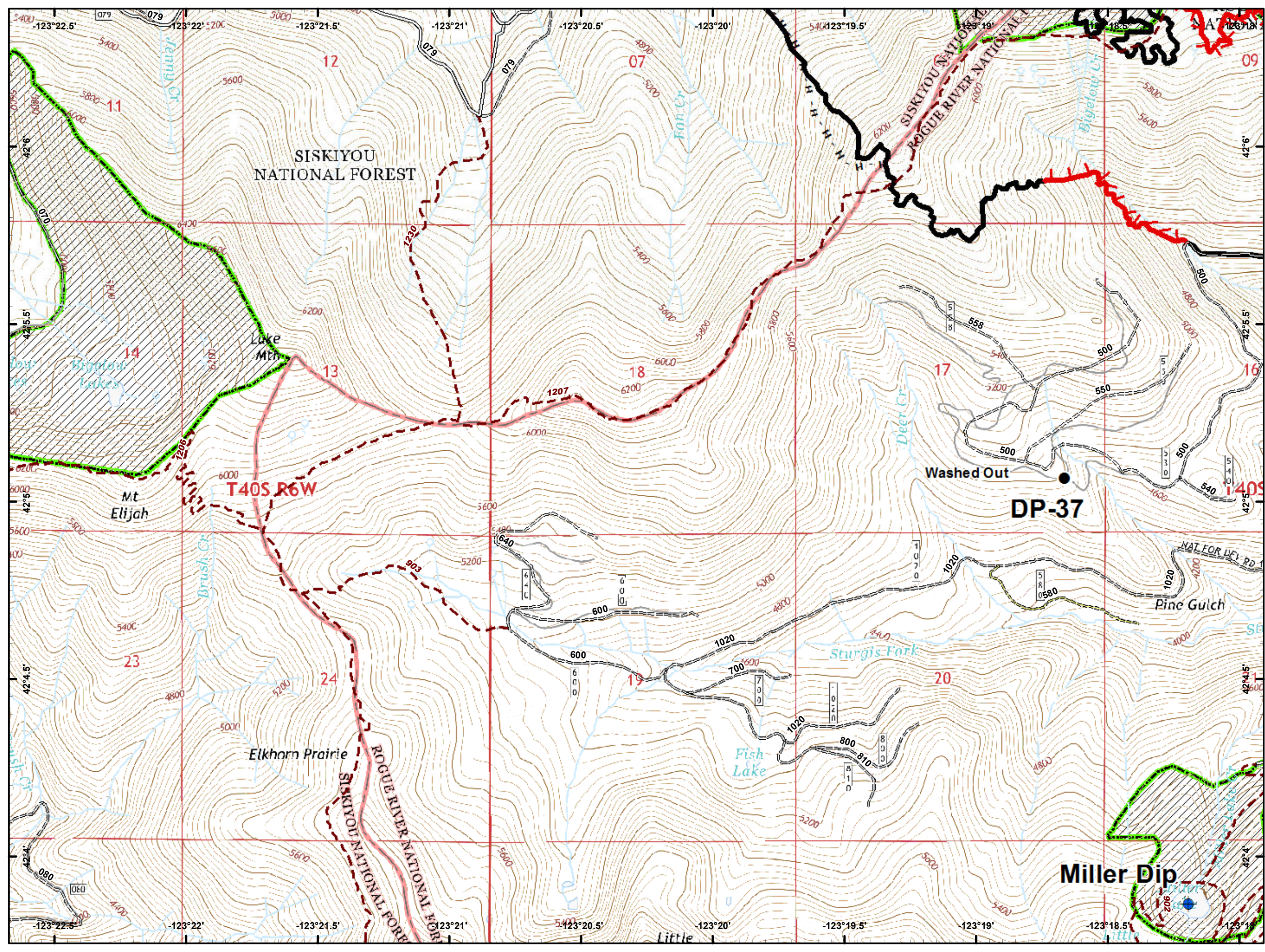
Page 17

BRANCH II BRANCH IV (ECLIPSE)

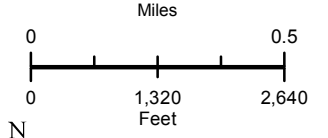
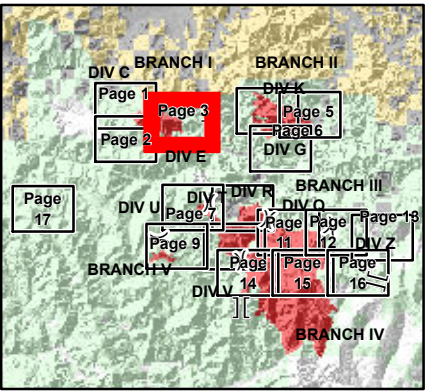
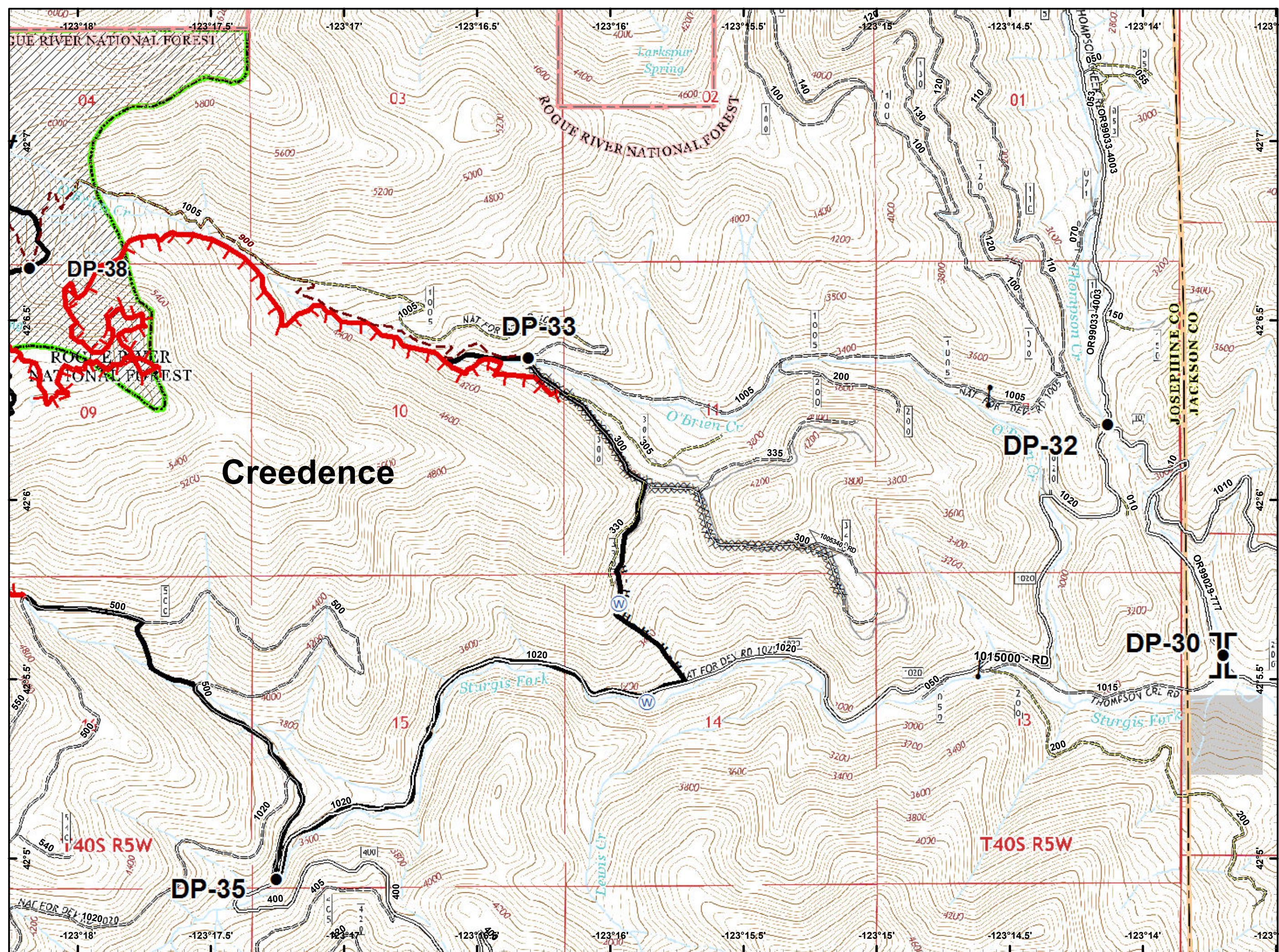
- Drop Point
- Helispot
- Ⓡ Repeater
- ⚓ Sling Site
- ⌚ Water Tank
- 🔴 Uncontrolled Fire Edge
- ⤴ Completed Line
- ⓧ Completed Dozer Line
- ⋯ Completed Hand Line
- Private and State



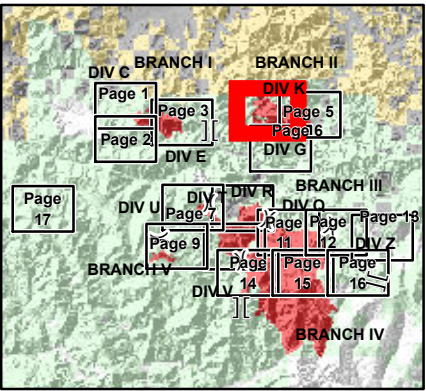
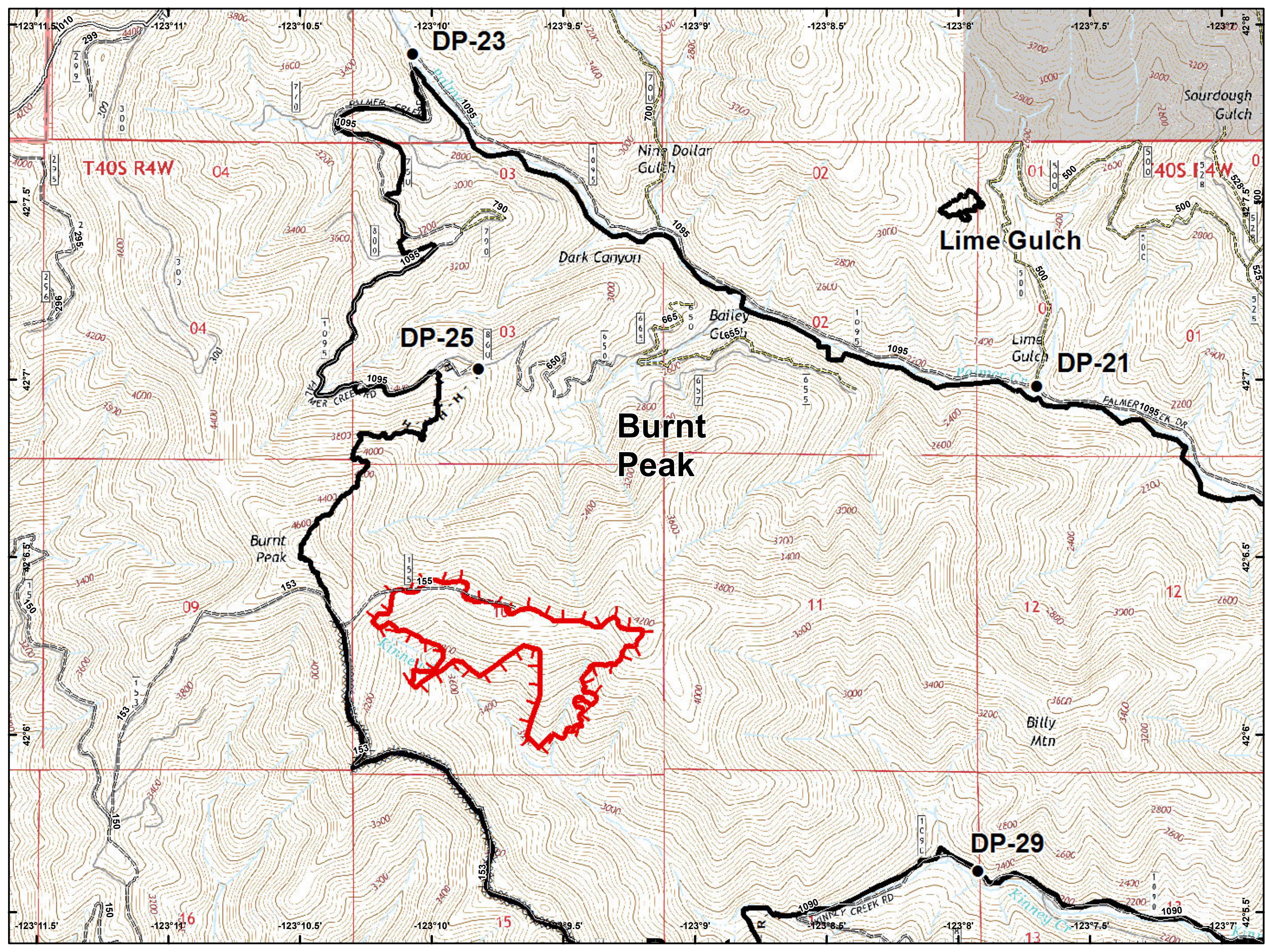
-  Dip Site
-  Drop Point
-  Uncontrolled Fire Edge
-  Completed Line
-  Completed Hand Line



- Drop Point
- Gate
- ⊕ Water Source
- || Branch Break
- 🔴 Uncontrolled Fire Edge
- ⤿ Completed Line
- ⊘ Completed Dozer Line
- Completed Hand Line
- Private and State

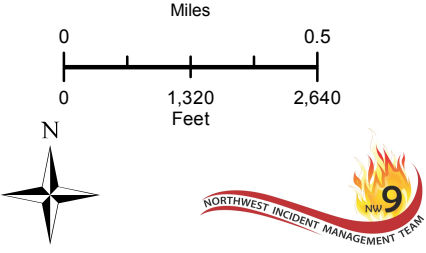
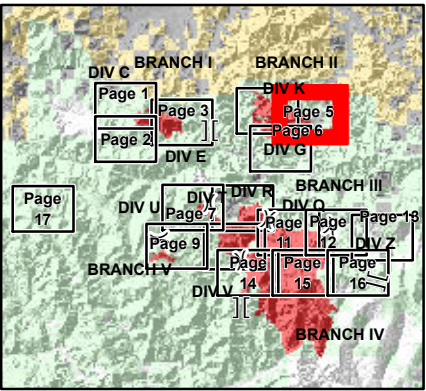
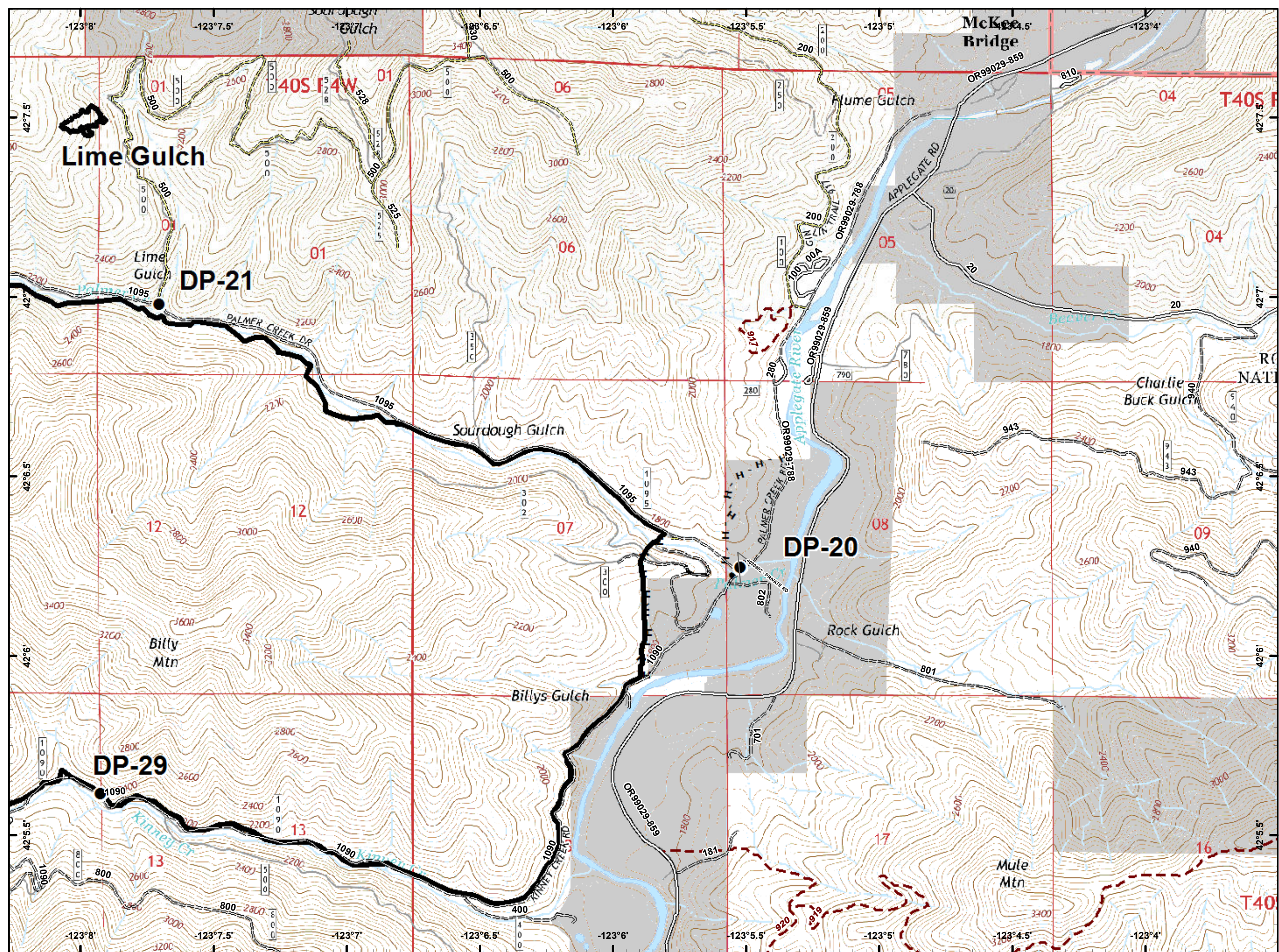


- Drop Point
- 🔴 Uncontrolled Fire Edge
- ⚫ Completed Line
- ⚫ Completed Dozer Line
- ⚫ Completed Hand Line
- ⚫ Road as Completed Line
- ⚫ Private and State

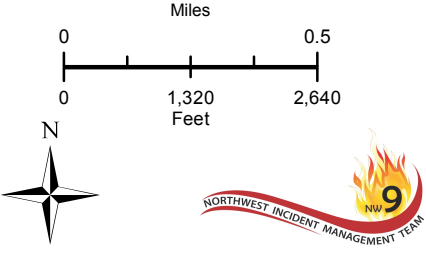
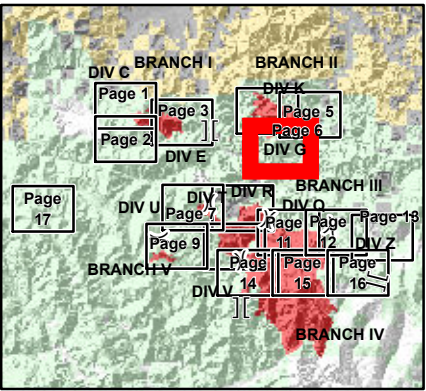
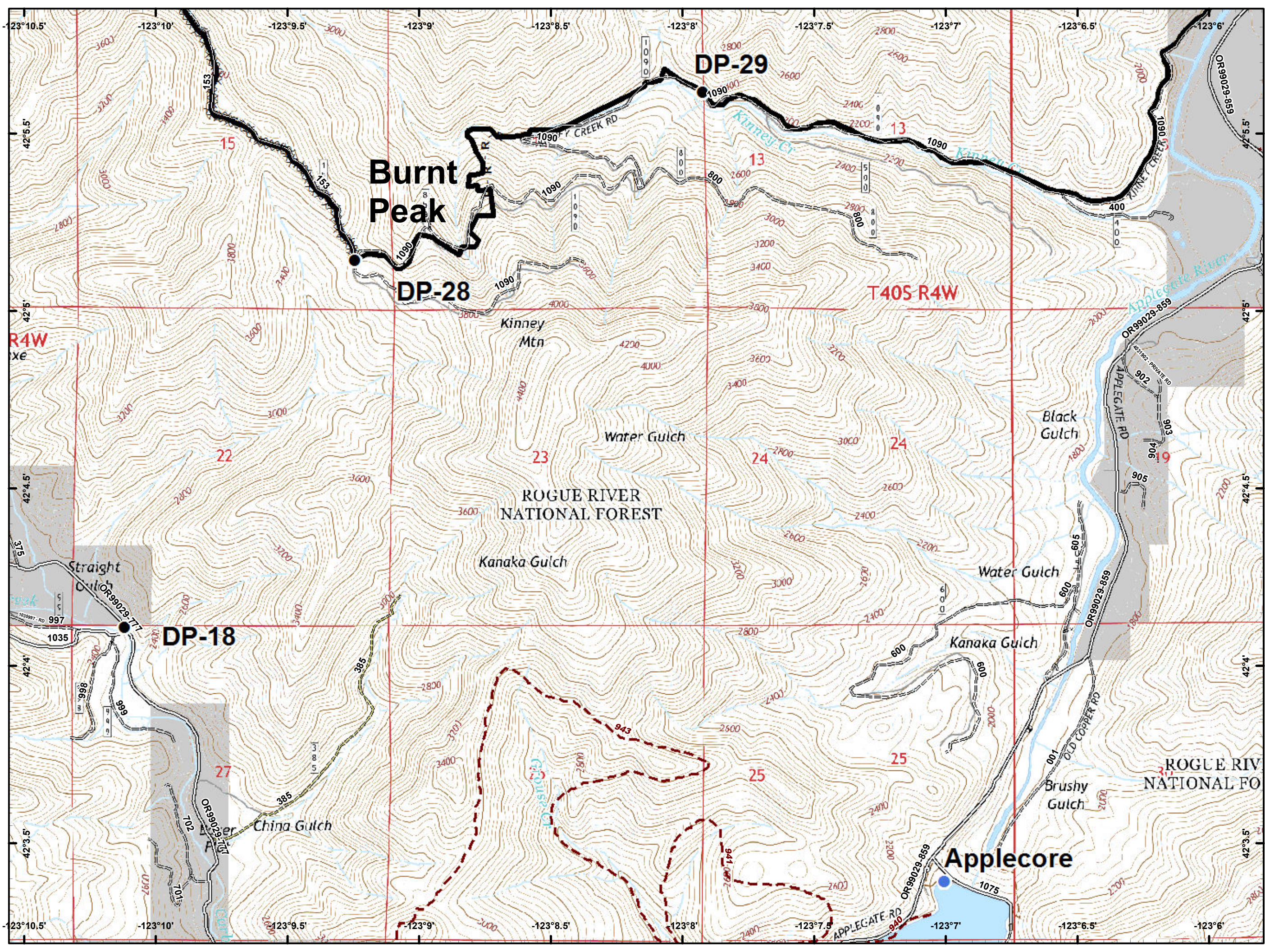


Miles 0 0.5
Feet 0 1,320 2,640

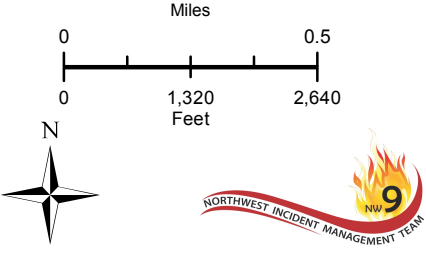
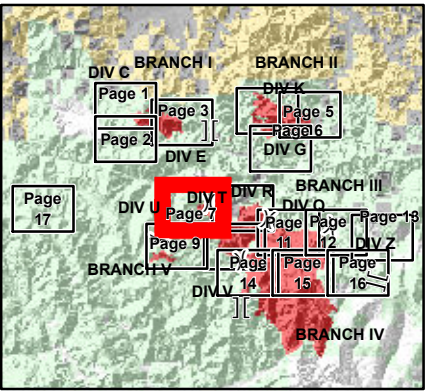
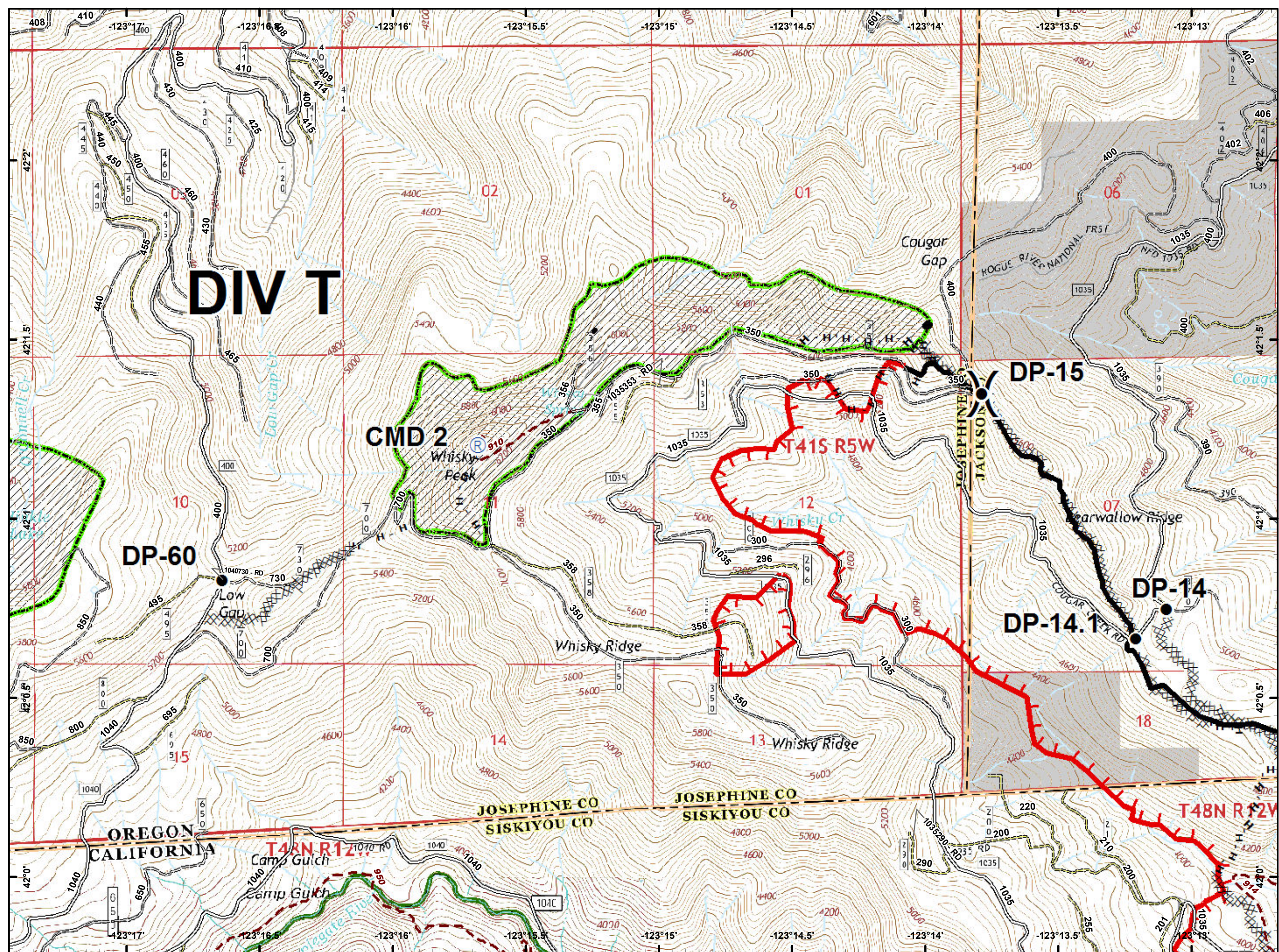
- Drop Point
- Gate
- ~ Completed Line
- Completed Hand Line
- ~ Miller_Compl...
- Private and State








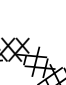
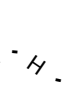
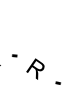



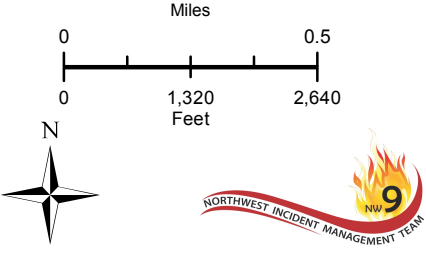
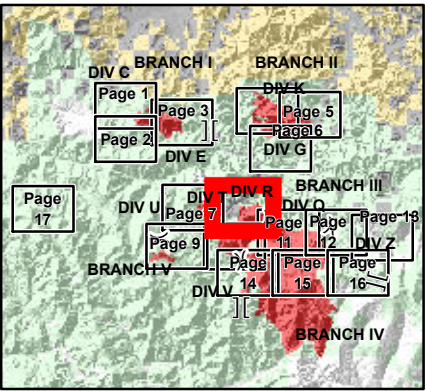
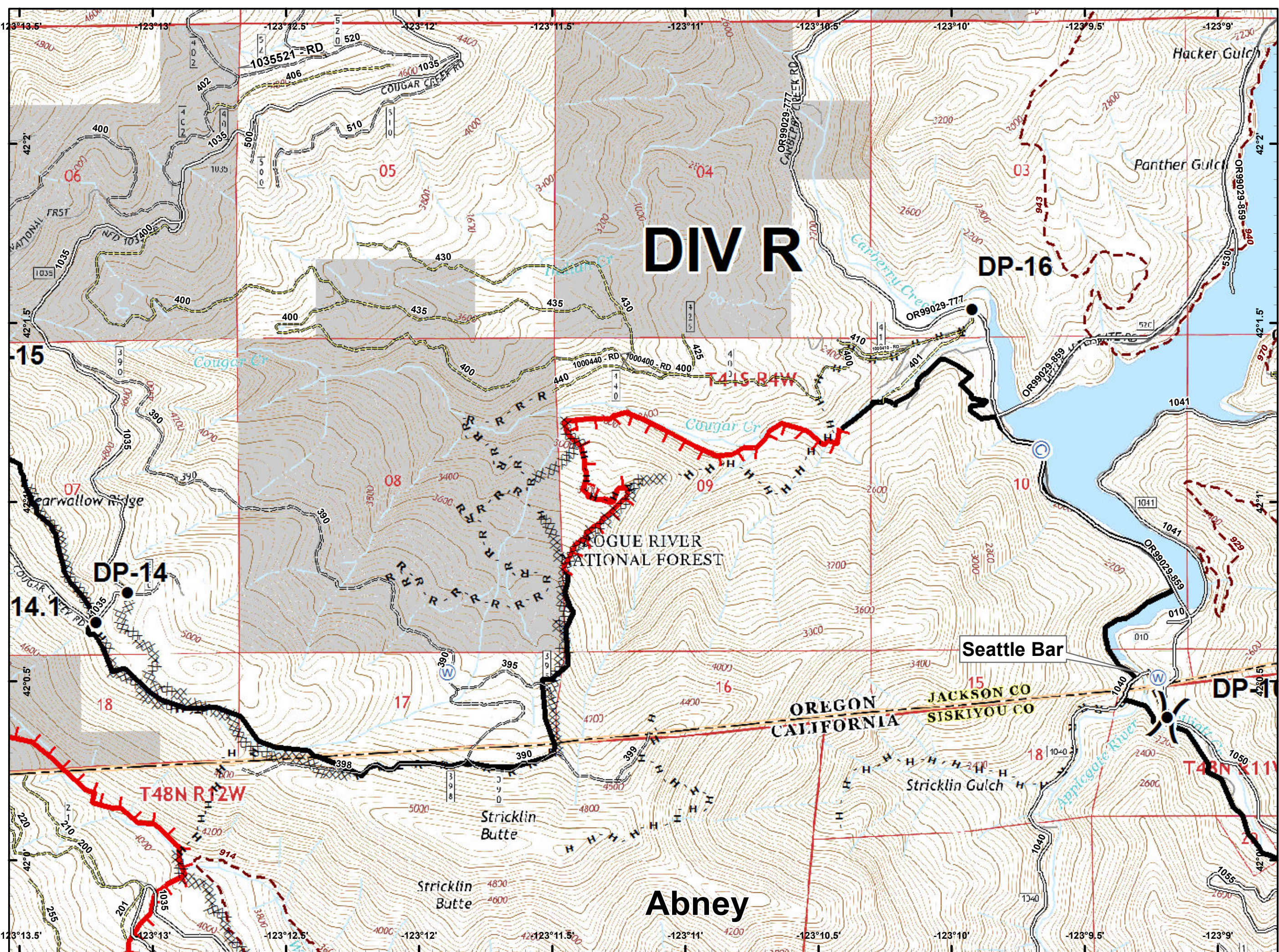
- Drop Point
- Helispot
- ~ Completed Line
- ⊞ Completed Dozer Line
- R - R - R Road as Completed Line
- Private and State



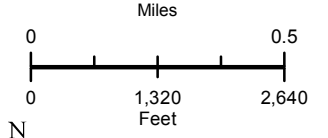
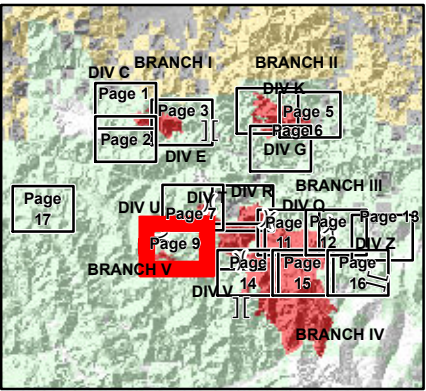
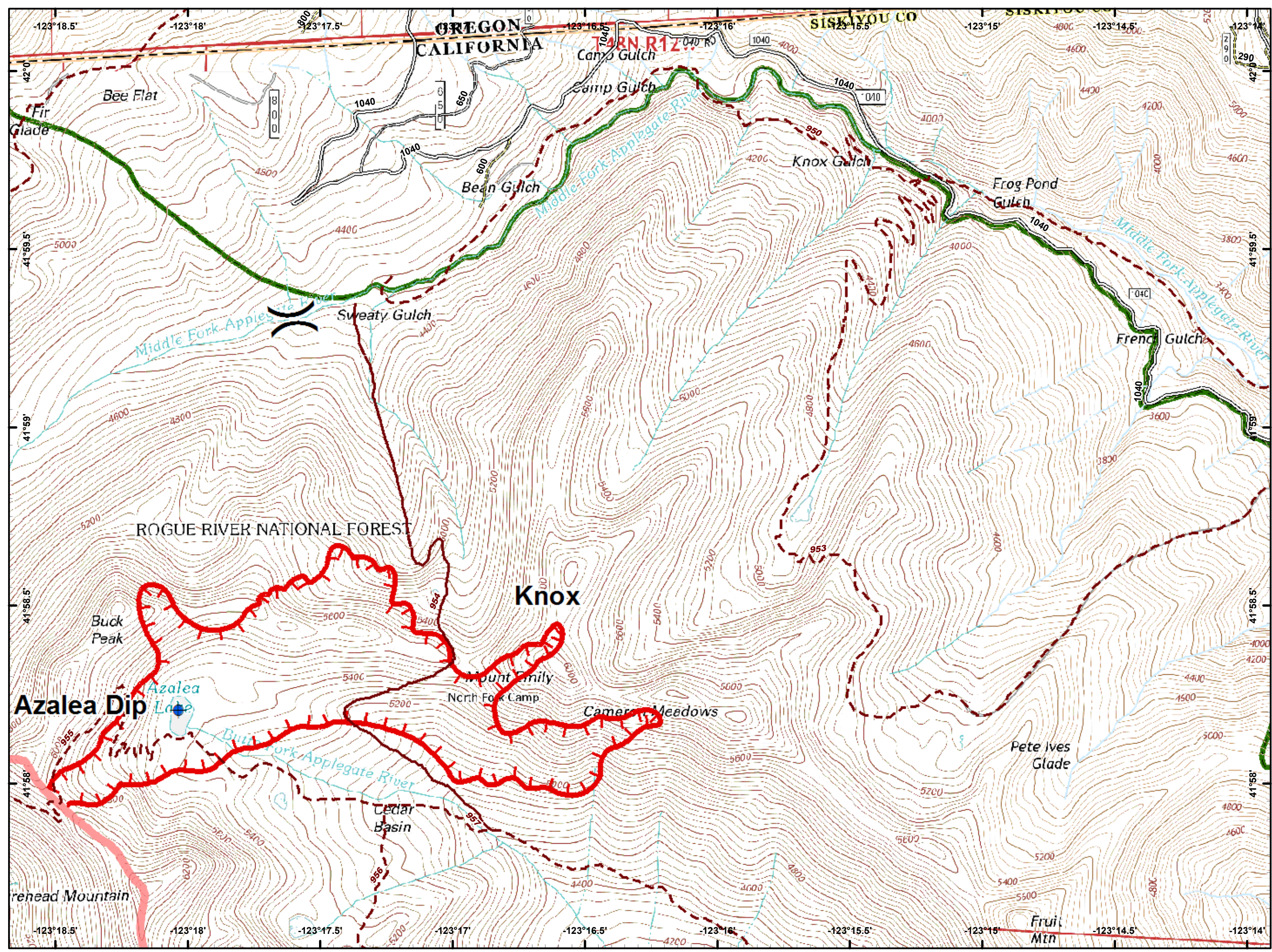
- Drop Point
- Ⓡ Repeater
- ⎓ Division Break
- 🔴 Uncontrolled Fire Edge
- ⤿ Completed Line
- ⊘ Completed Dozer Line
- ⋯ Completed Hand Line
- 🌿 Wilderness
- ⬛ Private and State



-  Camp
-  Drop Point
-  Water Source
-  Value at Risk
-  Division Break
-  Uncontrolled Fire Edge
-  Completed Line
-  Completed Dozer Line
-  Completed Hand Line
-  Road as Completed Line
-  Private and State



-  Dip Site
-  Division Break
-  Uncontrolled Fire Edge
-  Wilderness



- Drop Point
- () Division Break
- Red line with ticks Uncontrolled Fire Edge
- Black wavy line Completed Line
- Black dashed line with ticks Completed Dozer Line
- H-H-H Completed Hand Line
- Green outline Wilderness

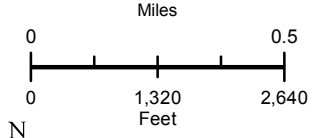
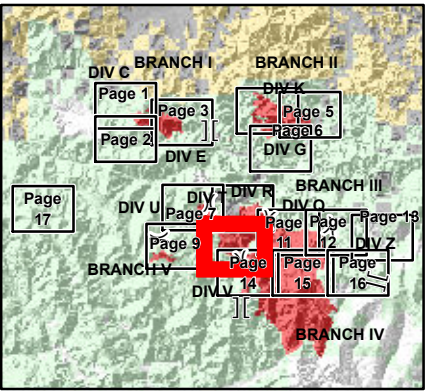
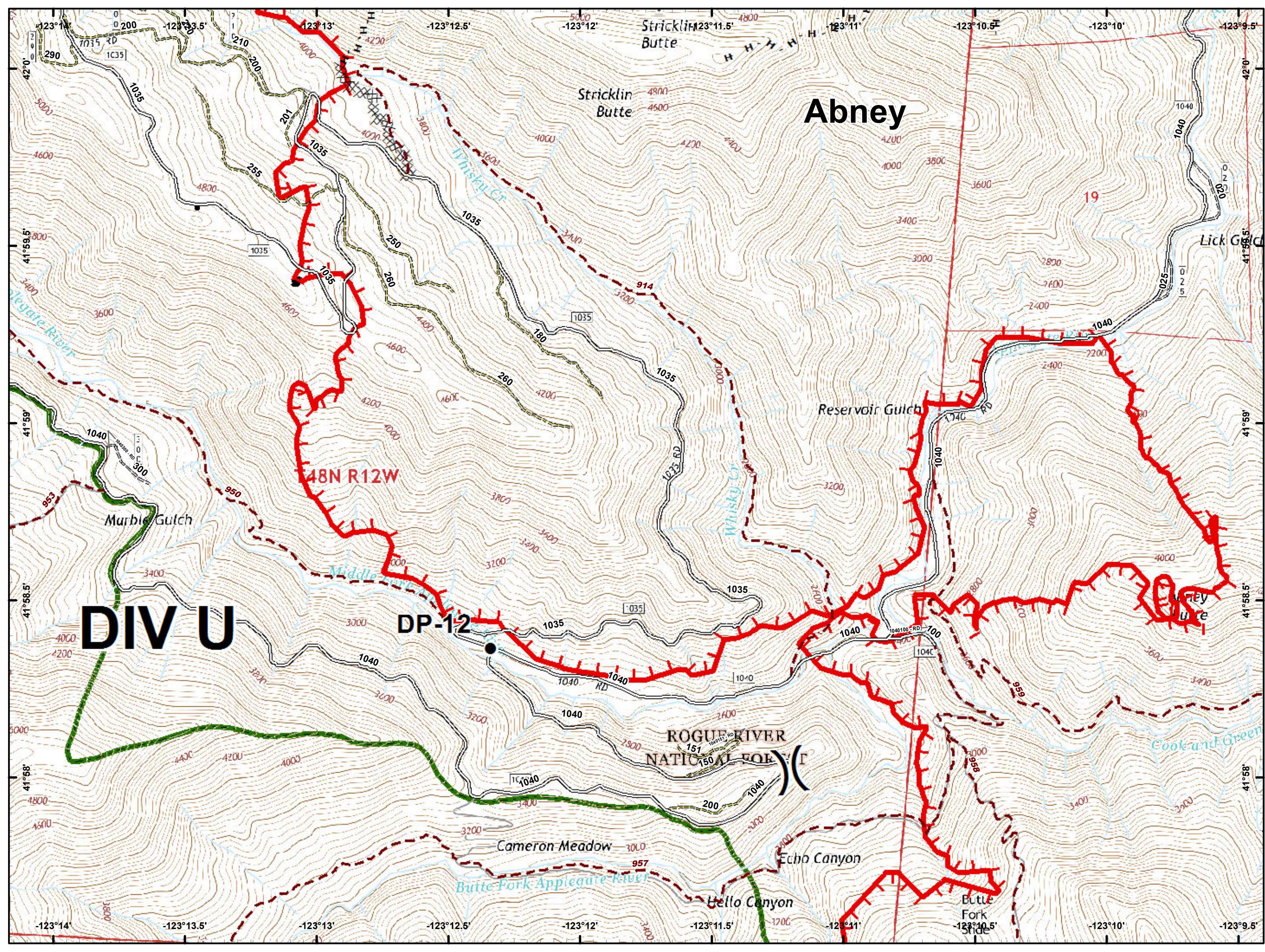
Abney

DIV U

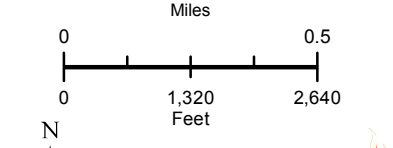
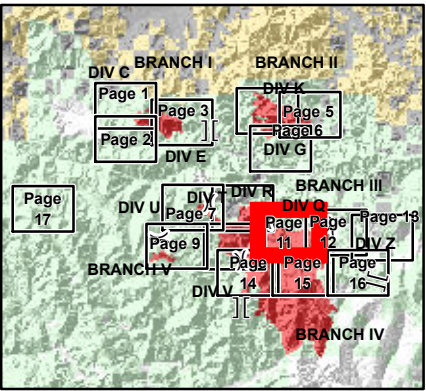
48N R12W

DP-12

ROGUE RIVER
NATIONAL FOREST

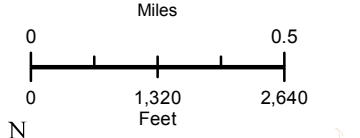
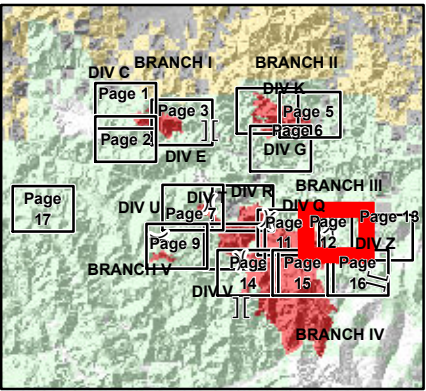
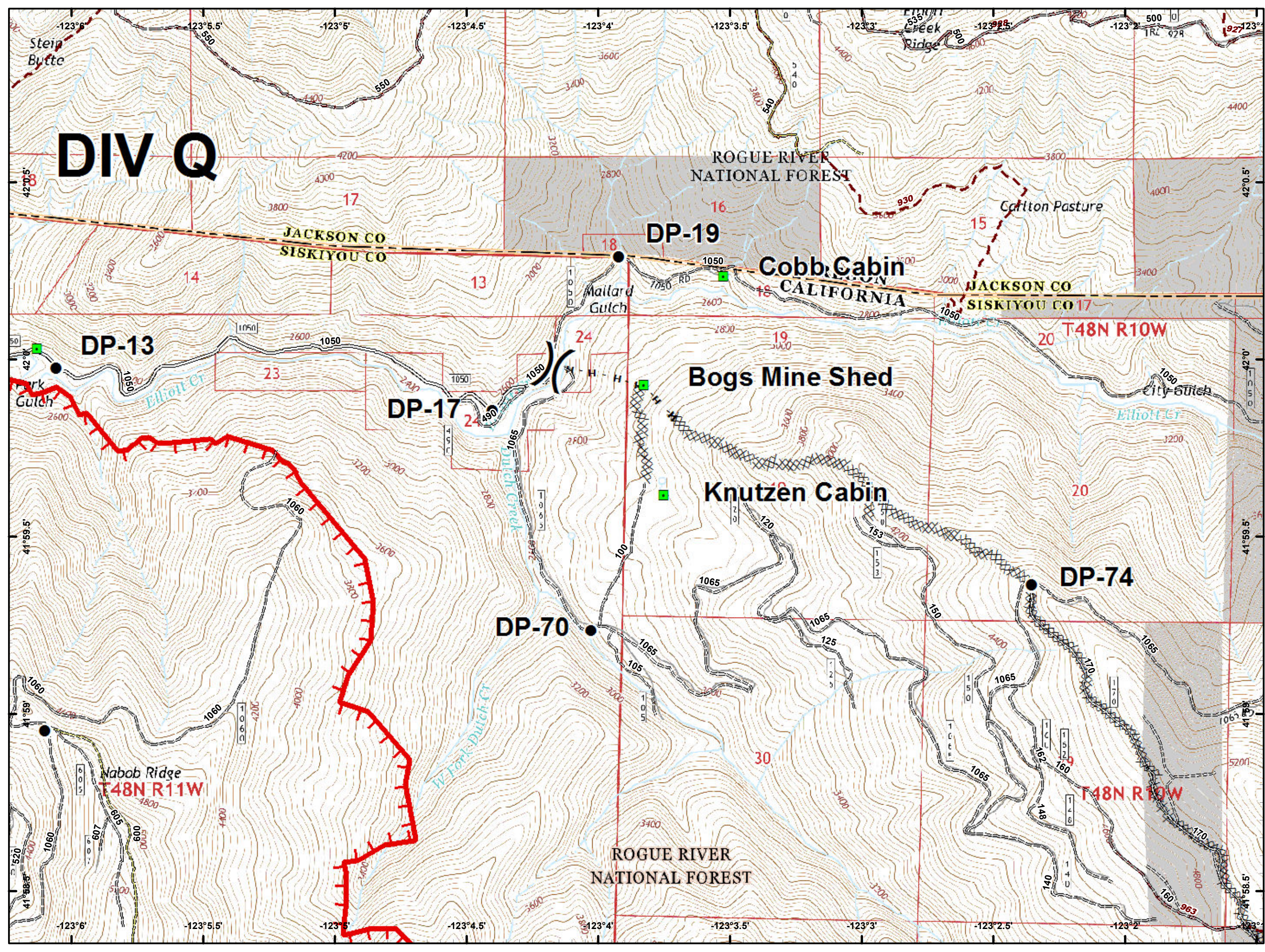


- Drop Point
- Landmark
- Ⓜ Water Source
- ⚠ Value at Risk
-) Division Break
- 🔴 Uncontrolled Fire Edge
- ⤵ Completed Line
- ⊠ Completed Dozer Line
- ⋯ Completed Hand Line
- ⋈ Road as Completed Line

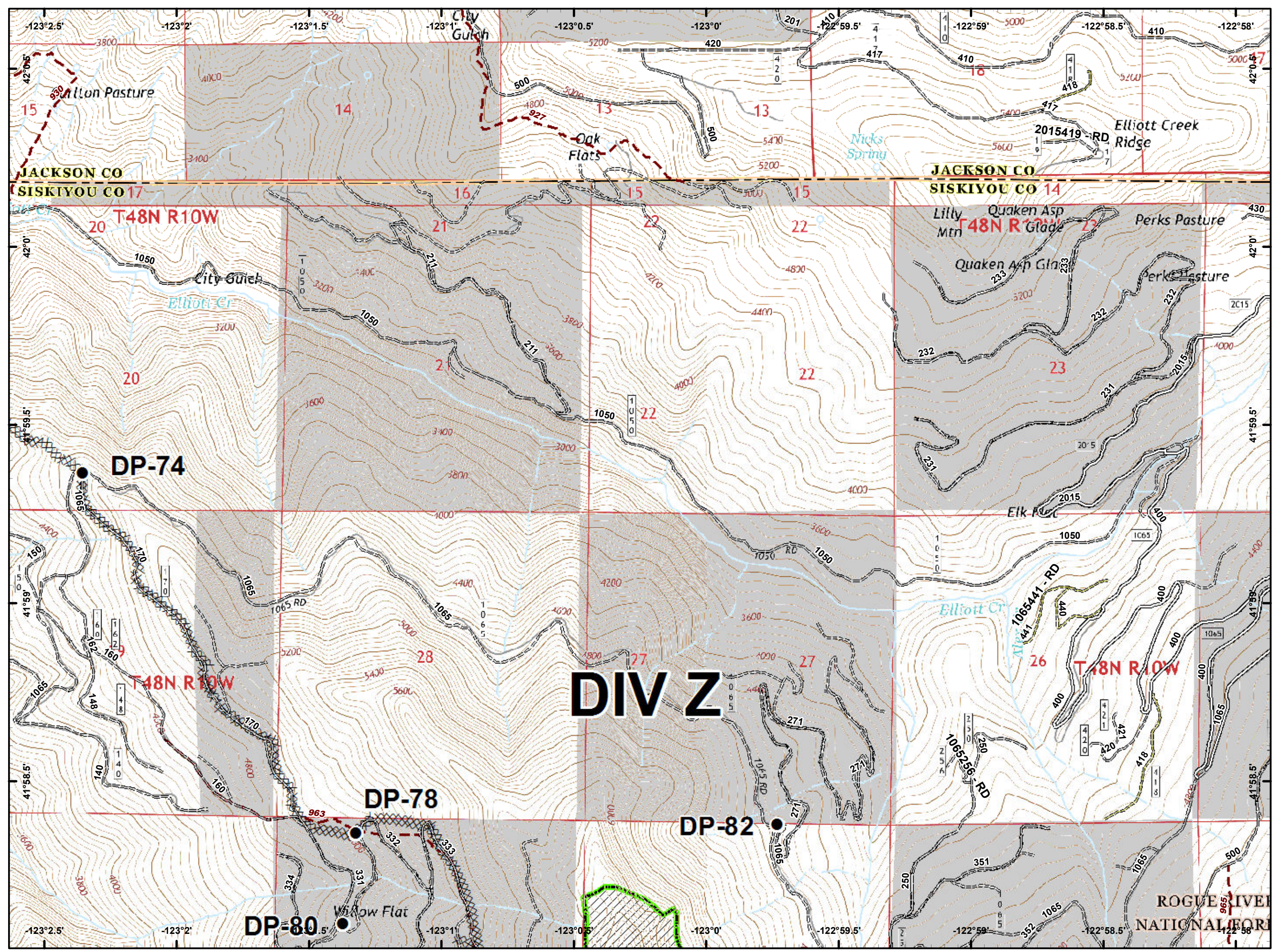


- Drop Point
- Landmark
-) Division Break
- 🔴 Uncontrolled Fire Edge
- ⊗ Completed Dozer Line
- - - Completed Hand Line
- Private and State

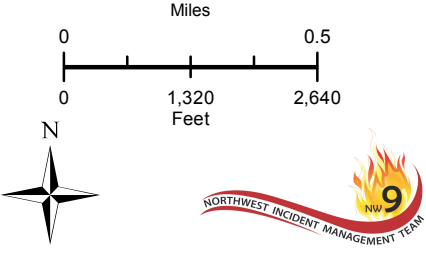
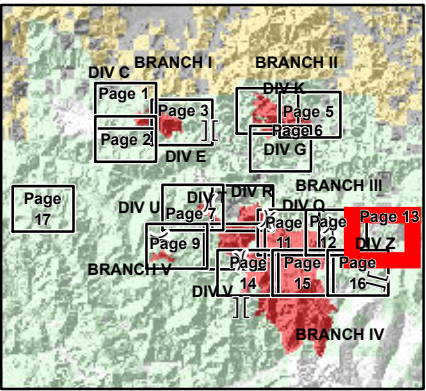
DIV Q










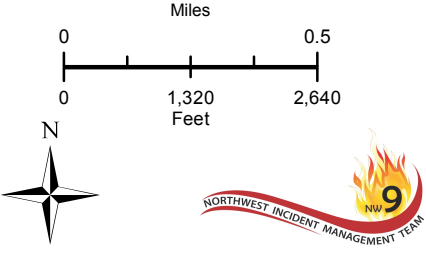
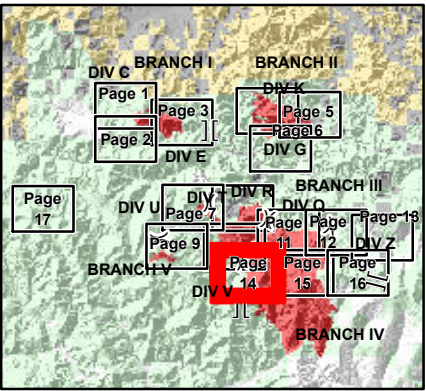
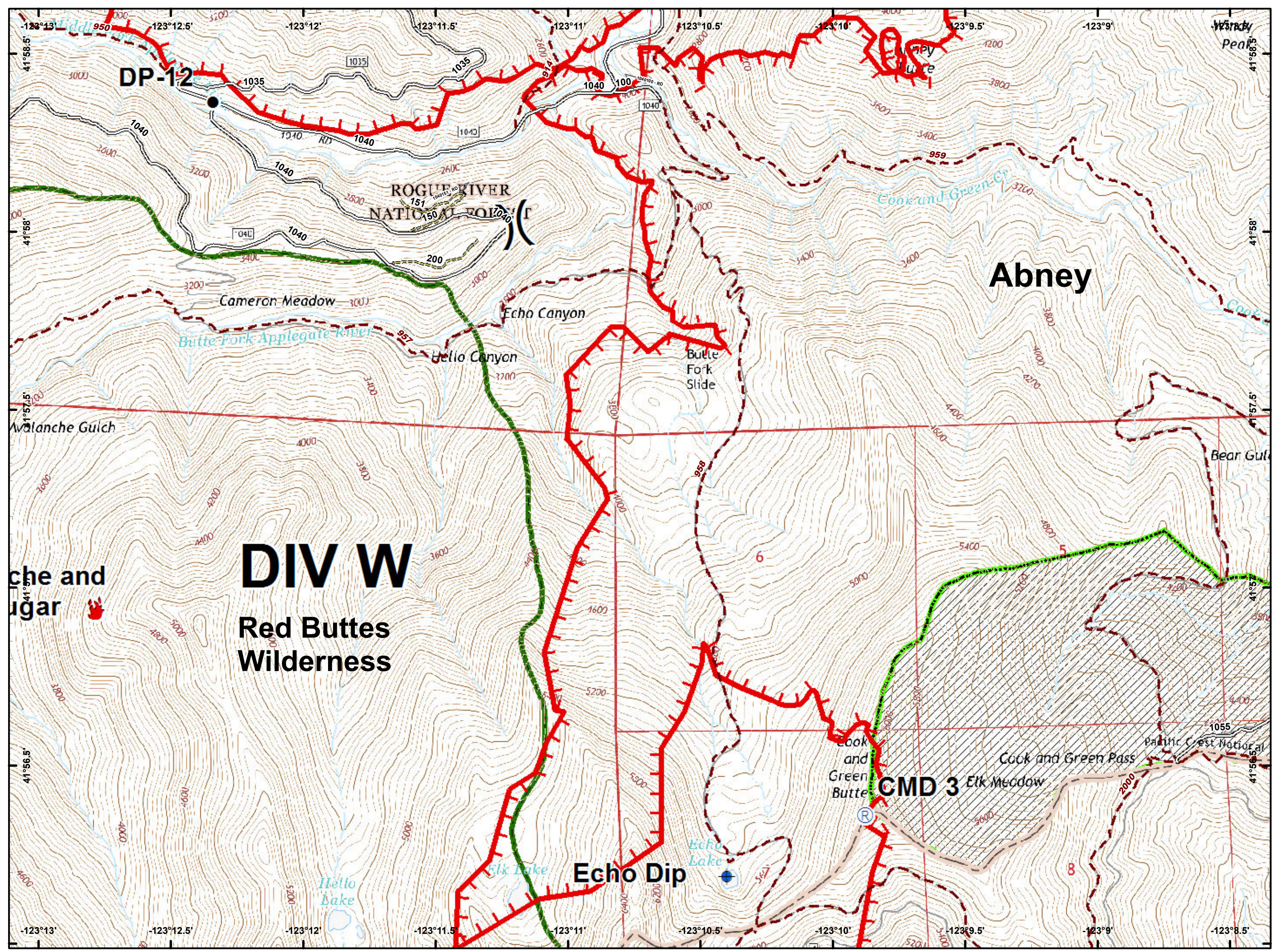
- Drop Point
- ▤ Completed Dozer Line
- Private and State



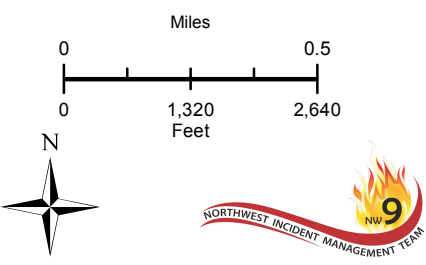
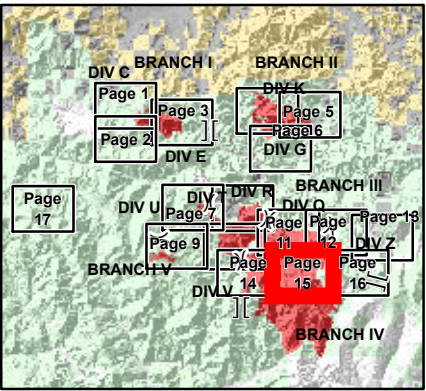
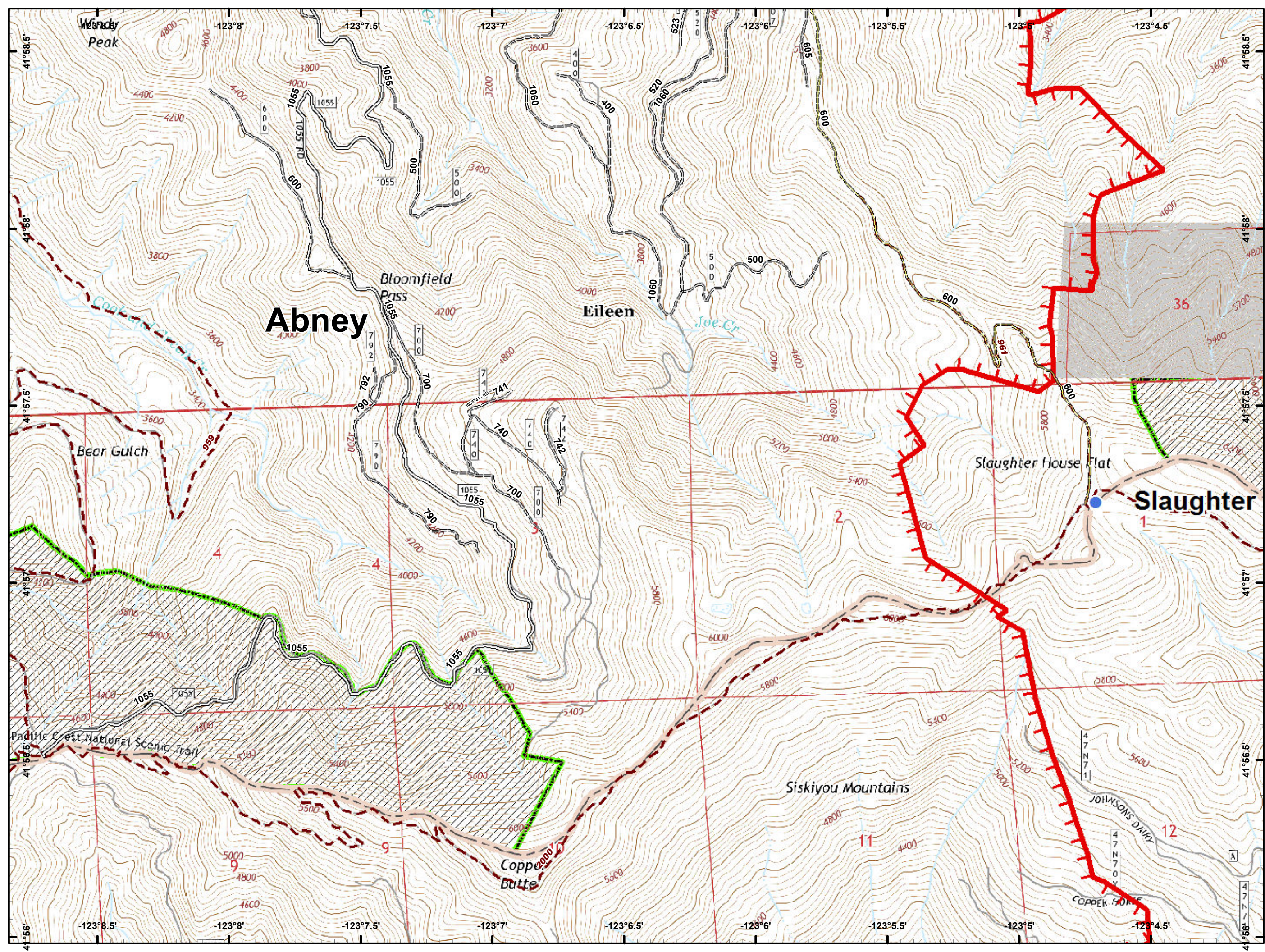
DIV Z



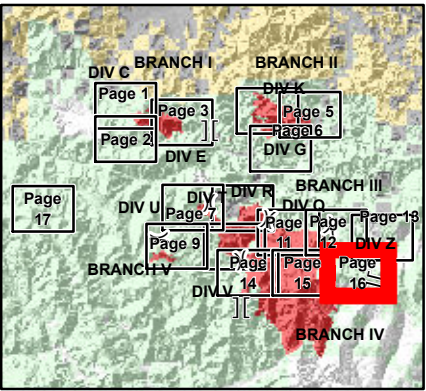
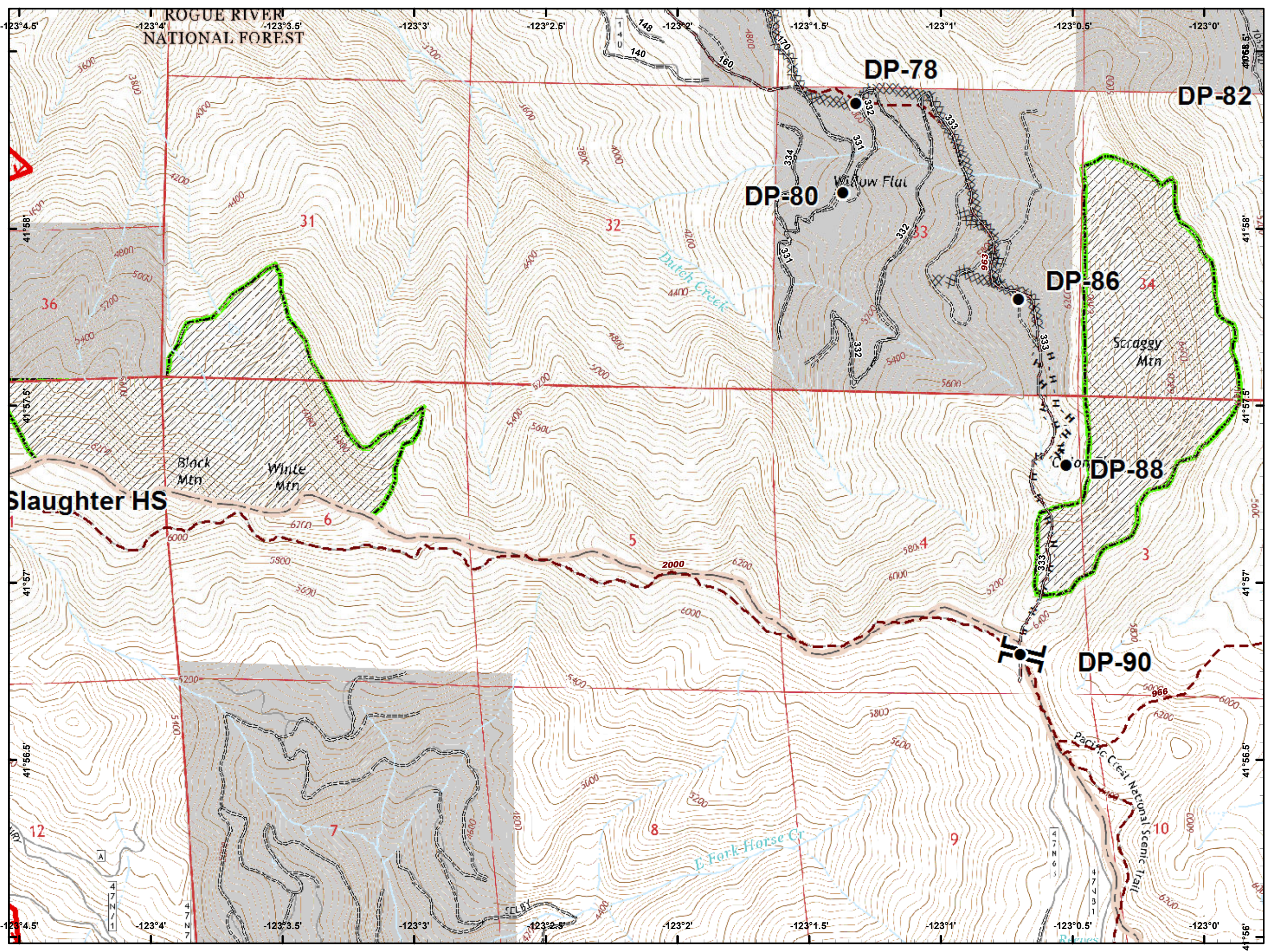
-  Dip Site
-  Drop Point
-  Fire Location
-  Repeater
-  Division Break
-  Uncontrolled Fire Edge
-  Wilderness






- Helispot
- 🔴 Uncontrolled Fire Edge



- Drop Point
- || Branch Break
- Uncontrolled Fire Edge
- Completed Dozer Line
- Completed Hand Line



Miles 0 0.5
Feet 0 1,320 2,640

-  Dip Site
-  Fire Location
-  Wilderness

