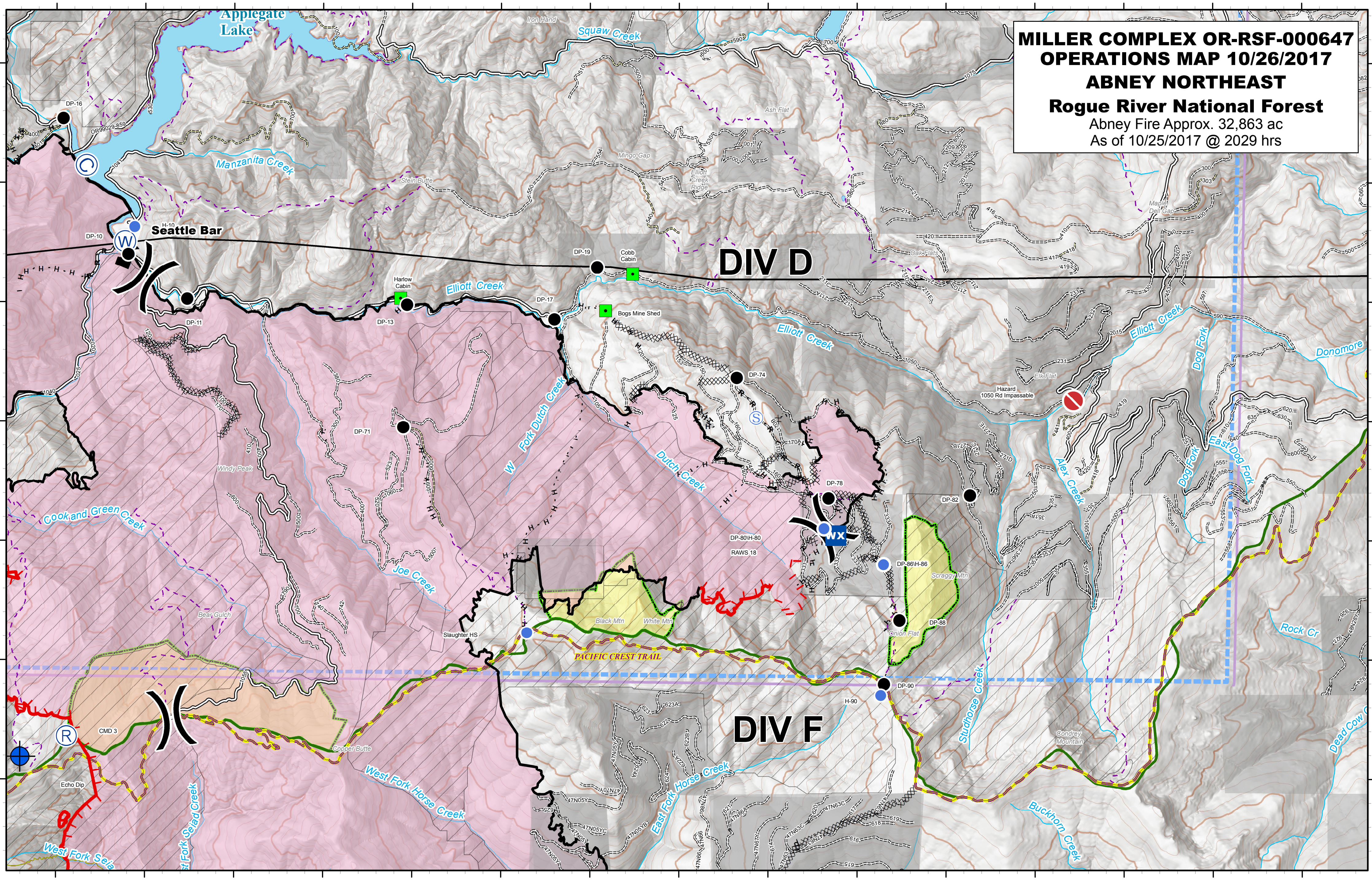



**MILLER COMPLEX OR-RSF-000647
OPERATIONS MAP 10/26/2017
ABNEY NORTHEAST
Rogue River National Forest
Abney Fire Approx. 32,863 ac
As of 10/25/2017 @ 2029 hrs**





OR Dept of Forestry GIS OPS_Abney_NE_2017_MillerComplex_ORRSF000647_ArchC_land.mxd
October 25, 2017, 2029 hrs NAD 1983 UTM Zone 10N

Feature/Category	Label	Lat	Long	Feature/Category	Label	Lat	Long	Feature/Category	Label	Lat	Long
Drop Site	Miller Dip	42° 3.867' N	123° 18.195' W	Drop Point	DP-18	42° 4.111' N	123° 10.117' W	Helispot	H-35	42° 1.349' N	123° 13.786' W
Drop Site	Echo Dip	41° 56.590' N	123° 10.400' W	Drop Point	DP-14.1	42° 0.668' N	123° 13.210' W	Helispot	H-50	42° 6.043' N	123° 19.252' W
Drop Site	Lily Dip	41° 55.280' N	123° 11.150' W	Drop Point	DP-11	42° 0.027' N	123° 15.500' W	Helispot	H-80	41° 58.500' N	123° 1.372' W
Drop Site	Azalea Dip	41° 58.207' N	123° 18.030' W	Drop Point	DP-13	41° 59.978' N	123° 6.058' W	Helispot	H-86	41° 57.803' N	123° 0.704' W
Drop Site	Lonesome Dip	41° 56.976' N	123° 17.839' W	Drop Point	DP-17	41° 59.857' N	123° 4.402' W	Helispot	H-90	41° 56.705' N	123° 0.735' W
Drop Point	Bolan Dip	42° 1.310' N	123° 27.570' W	Drop Point	DP-19	42° 0.292' N	123° 3.923' W	Helispot	H-30	42° 0.630' N	123° 9.120' W
Drop Point	DP-10	42° 0.400' N	123° 8.191' W	Drop Point	DP-60	42° 0.830' N	123° 16.638' W	Helispot	H-60	42° 0.590' N	123° 16.812' W
Drop Point	DP-28	42° 5.145' N	123° 9.245' W	Drop Point	DP-50	42° 2.953' N	123° 16.355' W	Incident Command Post	ICMP	42° 14.058' N	123° 3.943' W
Drop Point	DP-25	42° 7.031' N	123° 9.822' W	Drop Point	DP-90	41° 56.798' N	123° 0.698' W	Landmark	Bogs Mine Shed	42° 59.829' N	123° 3.828' W
Drop Point	DP-33	42° 7.973' N	123° 10.072' W	Drop Point	DP-82	41° 58.381' N	123° 29.730' W	Landmark	Harlow Cabin	42° 0.029' N	123° 6.131' W
Drop Point	DP-21	42° 6.982' N	123° 7.703' W	Drop Point	DP-74	41° 59.388' N	123° 2.354' W	Landmark	Cobb Cabin	42° 0.237' N	123° 3.523' W
Drop Point	DP-38	42° 6.649' N	123° 18.181' W	Drop Point	DP-78	41° 58.357' N	123° 1.322' W	Lookout	Applegate	42° 2.357' N	123° 8.547' W
Drop Point	DP-32	42° 6.212' N	123° 14.133' W	Drop Point	DP-80	41° 58.104' N	123° 1.372' W	Repeater	CMD 3	42° 11.785' N	123° 9.089' W
Drop Point	DP-30	42° 5.568' N	123° 13.698' W	Drop Point	DP-86	41° 57.803' N	123° 0.704' W	Repeater	CMD 2	42° 1.290' N	123° 15.681' W
Drop Point	DP-35	42° 4.944' N	123° 17.252' W	Drop Point	DP-88	41° 57.334' N	123° 0.524' W	Repeater	CMD 3	41° 56.363' N	123° 9.880' W
Drop Point	DP-33	42° 6.398' N	123° 16.306' W	Drop Point	DP-71	41° 58.953' N	123° 6.100' W	Repeater	CMD 4	42° 2.636' N	123° 53.449' W
Drop Point	DP-14	42° 0.380' N	123° 13.090' W	Drop Point	DP-16.1	42° 0.140' N	123° 13.560' W	Repeater	CMD 5	42° 6.590' N	123° 18.755' W
Drop Point	DP-16	42° 1.539' N	123° 9.923' W	Fire Location	Avalanche Cougar	41° 56.945' N	123° 12.779' W	Sling Site	DP-12	42° 7.210' N	123° 19.587' W
Drop Point	DP-41	42° 7.498' N	123° 20.572' W	Fire Location	Redwood	42° 1.222' N	123° 26.913' W	Sling Site	DP-29	42° 6.955' N	123° 19.127' W
Drop Point	DP-20	42° 6.240' N	123° 5.522' W	Helibase	Cave Junction	40° 6.000' N	123° 41.000' W	Mobile Weather Unit	RAWS 18	41° 58.10644' N	123° 1.37502' W
Drop Point	DP-12	41° 58.865' N	123° 12.338' W	Helispot	Applegate	42° 1.304' N	123° 1.002' W	Other	Hazard Road Impassable	41° 58.17511' N	122° 58.5676' W
Drop Point	DP-29	42° 5.618' N	123° 7.924' W	Helispot	Hamilton	42° 14.054' N	123° 3.704' W				
Drop Point	DP-37	42° 5.069' N	123° 18.660' W	Helispot	H-41	42° 7.460' N	123° 20.566' W				
Drop Point	DP-15/H-15	42° 1.349' N	123° 13.786' W	Helispot	Slaughter HS	41° 57.230' N	123° 4.710' W				

- Uncontrolled Fire Edge
- Completed Line
- Completed Dozer Line
- Completed Hand Line
- Road as Completed Line
- TFR Boundary
- Division Break
- Helispot
- Drop Point
- Water Source
- Hazard Road Impassable
- Private and State
- Botanical Areas
- Wilderness
- Timber Sale
- Forest Boundary
- Inventory Roadless Area
- Mobile Weather Unit
- Value at Risk
- Lookout
- Landmark
- Pacific Crest Trail

0 0.275 0.55 1.1 1.65 2.2
Miles
1:36,000 200' Contours 1 in = 0.57 miles
1,000' Index Contours