

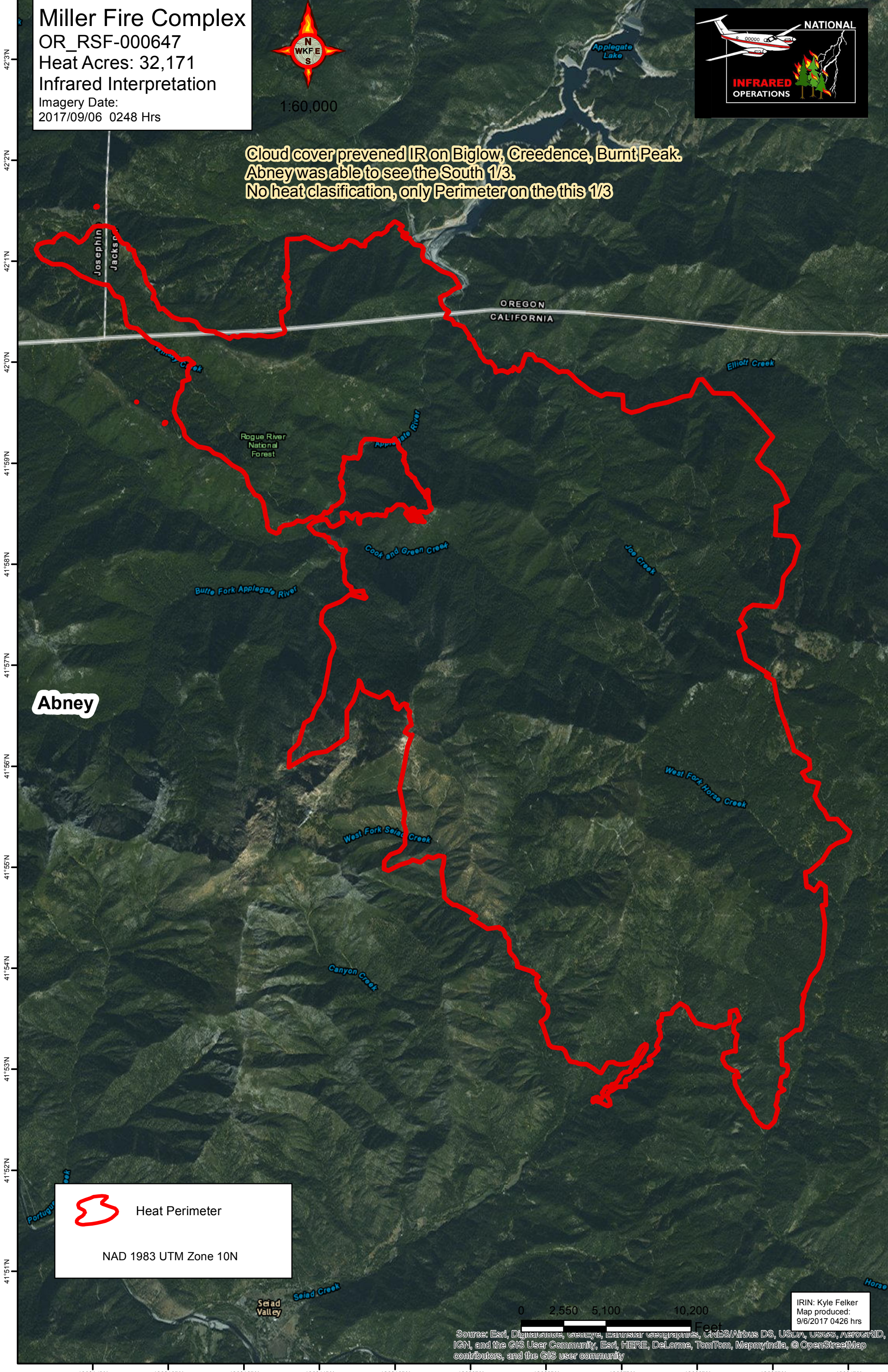
Miller Fire Complex
OR_RSF-000647
Heat Acres: 32,171
Infrared Interpretation
Imagery Date:
2017/09/06 0248 Hrs



1:60,000



Cloud cover prevented IR on Biglow, Creedence, Burnt Peak.
Abney was able to see the South 1/3.
No heat classification, only Perimeter on the this 1/3



Abney

 Heat Perimeter
NAD 1983 UTM Zone 10N

0 2,550 5,100 10,200
Feet

IRIN: Kyle Felker
Map produced:
9/6/2017 0426 hrs

Source: Esri, DigitalGlobe, GeoEye, Earthstar Geographics, CNES/Airbus DS, USDA, USGS, AeroGRID, IGN, and the GIS User Community, Esri, HERE, DeLorme, TomTom, MapmyIndia, © OpenStreetMap contributors, and the GIS user community